

BPM4186 ✓

11 08 26 -24 27

.921 226 BPM

LFT764 ✓

11 07.2 -27 19

12.3 m

-2309768

-862

.095 (17)

95 (17) > 6

854 ✓

∫_{0.0} -

855h19 ✓

✓ 151m - h16

931 +096 21m26

✓ $\boxed{11 \quad 06 \quad 00 \quad +1 \quad 44.8}$

W04/302
LPT 261

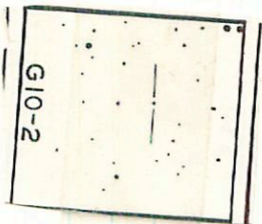
610-2

11 047 + 1 52.8 15.3 + 2

.77 145 &
.67 146 way

12.84 + 11.6 18 Apr 76
12.18 + 11.5 16 Apr 76
12.96 + 11.55

X



BPM87113 -

11 04 24 +10 23

95 138 G
940 140 Dmm

LF7759 ✓

11 03.1 +10 31

13m2 +2

L119700

G45-33 ✓

11.14 +1.06 18 April 76
11.14 +1.05 16 April 76
11.11 / 11.05

+



G45-33

OPM 7448/9/6

.747 168 BPM
.75 120 LP

LFTT9/50/91

11 12.9 -17 50

-1703336

.9.96 +1.31 +1.21 (2)

2618 F70

908 +0.58 (4)

LP792-9

V0837

+124 -733 CT

10.05 +1.32 +1.21 (2)

C 93' 300 +117

M

9.16 +0.60 (4)

57 (2) F/60

13.70 +1.55 +1.05 (2)

X
+140 -735

12.30 +1.14 (3)

Cin 18-1364

LFT774

-1403277

11 10 30 -14 5215

11 ~~08.4~~ -14 42

4210 - 580 Cin

4678-586 TL 9.03 +1.17 +108 ②

4712 - 570 V

4696 - 598 V 8.26 +0.545 ②

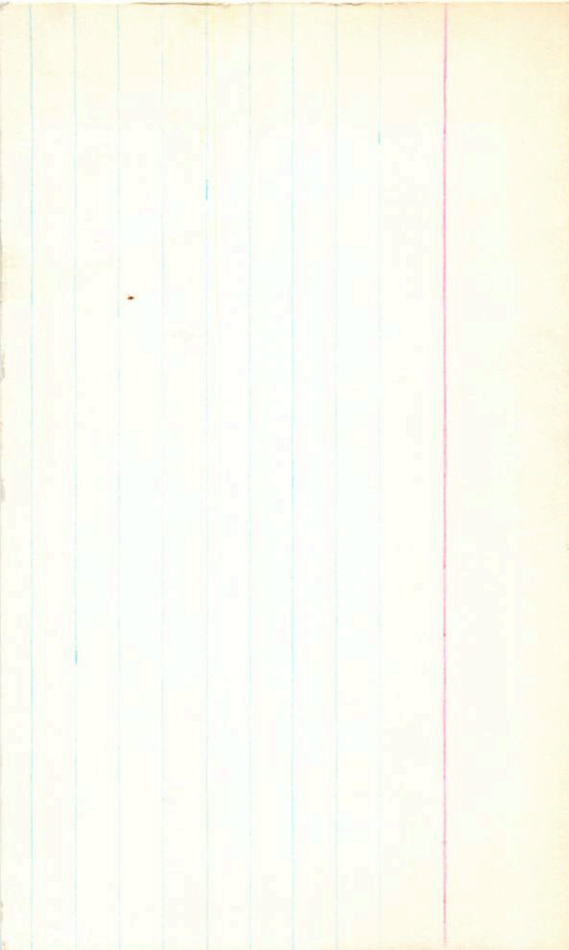
050 ②

✓

9.01 - 26 1335 - 602

front

697 573



Psychobolus 31

Gr
LFT 7/1/2

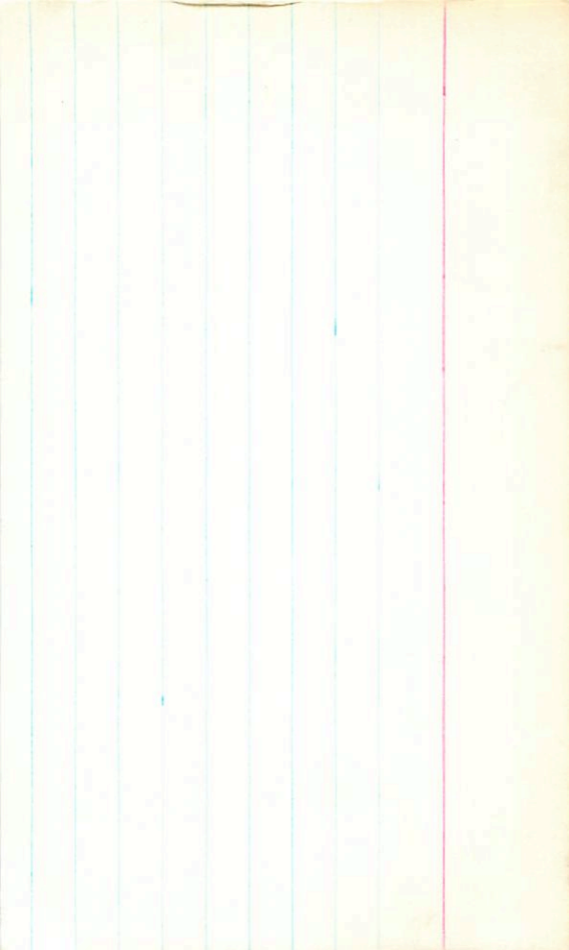
11 08.6 443 420

$\Delta m \approx 0$
4"

G122-2

175 234 P
178 237 G

12.4-12



BPM 87260

11 16 25 +17 24

.91 1.01 G

482 260 BPM (corrected by L.P.)

LFT 784 ✓

11 15.1 +17 32 14.7 m

L 1254-89

14.3 +2

G 56-29

12.4 14.3 m

12.28 +0.935 18 Apr 74





656-29

BPM 54817

LFT 785 ✓

L-611-67

L-9906-9

11 15 30 -27 48

11 14.3 -27 40

.944 211 BPM
.95 210 h.p

14.8 m

12.18 + 1.275 18 April 76

✓

Way 323

LF 492

11 14 48 +8 09

11 13.5 +8 17

14.0 +2

172 268 G-

178 264 BPM

G 10-9

BPM 97241

1167 +0.89 271476

1171 +0.92 184476

1169 +0.905 (2)



G10-9



1047258

140 16.2 am

11 21 53 +26 02

11 20 33 +26 10.4

LP374 -39

not 6

BPM 87276

LFT 794 ✓

L1403-36

G120-32

11	17 08	+27	13
----	-------	-----	----

11	15.9	+27	21.4
----	------	-----	------

.72	247	6
.720	246	0PM
	15.3	+3
		.737

12.49 +1.12-18 Apr 76

✓



G120-32

~~AGUSSO~~

3 Mm

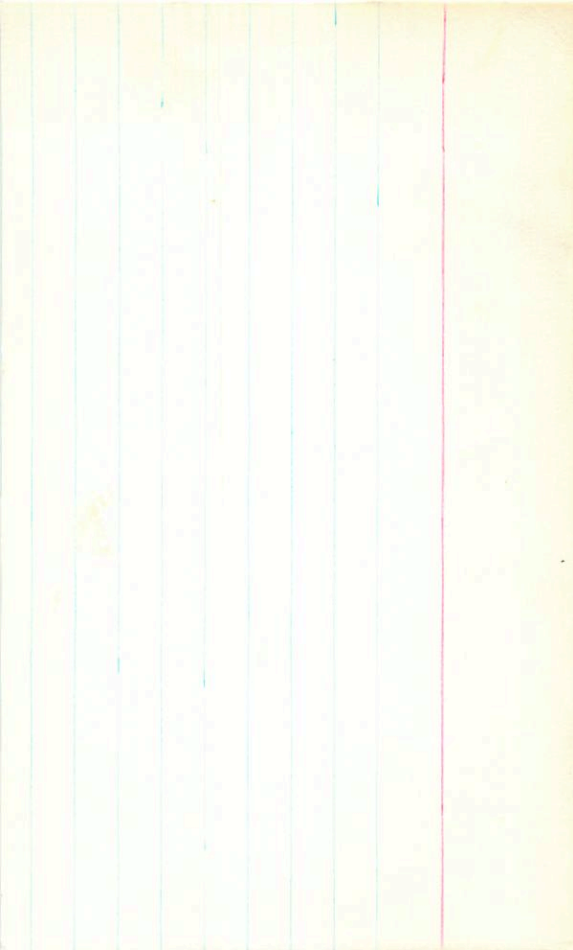
65789/90

11 15.5

+31 49

65787 AR

ADD



way/398

LF-T814

11 26.4 110 26

G56-44

-855 +495 way
-720 +605 G

12.56 +1.60 +1.14 ①

11.24 +1.20 ②

+

Pass 110

LFT 811/2

11 25.7 + 57 00

16.1 + 3

.73 133 G
.70 130 Road
.76 135 LP

16.3 + 3

G 197-15116

LP 93-714

14.5 m 321° 3.5"
15.3 m

BPM 74591

LF 810

L 600-43

LF 672-39

.044 (6)

1.01 1470 LP

25.5 -8 53

565

-860

2.3

0

+

+515 -820 BPM

+565 -960 TI

12.37 +1.44 +1.02 (1)

11.26 +0.86 (2)

G-122-34 11 32.9 + 39 12.5 15.1 + 3

1712526

BPM0605Y

LF1821

11 29.4 -40 47

L396-D GHB1

-918
+170
-0.15
-55

$m_2 = -190 \text{ gms}$

$0.102 \pm 0.010 \text{ gms}$

905
943
9.43

-620 X

0.96 Blue

11554 + 148 + 0.57 ①

10.21 + 1.16 ②

.707 2400 BPM

BPM87432

.75 228G

.763 228BPM

L1-T819

11 29.0 +2 31

L1044-35

-600

12.49 +1.44 +1.12 (1)

G10-24

-505

11.39 +0.47 (2)

2.1

+43

X

Radcliffe ✓

LFT 826 ✓

RT

11 34 50 + 28 58.5

11 33.5 + 29 07

.88 160 G

.88 161 Radcliffe

SA55-33

T D ~~0100~~

13.49 + 136 + 1.14 ①

G-120-61

+ 267-837 J

440

12.81

+ 0.57

18 Apr 76

0013 (17)

✓

G120-61