

BPM 5358

LF7638 ✓

L140-119

9 165 00 -61 59

9 15.4 -61 53 14.0 m

.912 3130

11.37 +1.14 16 Apr 20

X

1400.013140 53 61



N

R020436

LFT648

9 22.9 → 07

+650 ← 550 Row
+585 - 530 G
+645 - 520 BPM

G 161-25

BPM73373

+615

-550

3.15

4190

.015 (4)

12.66 + 1.205 + 1.07 (2)

12.01 + 0.515 (2)

270

✓

+608 - 551 ✓

BPM19558

.871 282 BPM

LF+643

9 20.7 -60 05

-59°23.51

9.51 +1.45 +1.16 (1)

8.42 +0.795 (2)

2238

✓

842 +171

Ross 439 (2)

172 190 G

-120 -640 Ross

LFT 651

9 26.4 → 08

G161-33/4

173 ⁷¹⁹

~~10.43~~

12.14 +1.54 +1.11 (2)

10.43 +0.445 (2)

.061 (14)

-175

-720

145

+51

15.02 +1.87 +1.25 (2)

13.52 +1.28 (2)

2254

X

AT

R436

G161-25

9 22.9 -7 07

176 + 2.079 (32)

LTT-3470

9 22.9 -7 07

138 145 0.85 130

12.63 +1.22 - 31 Jan 68

12.70 +1.19 +1.07 5 9 1 68

12.66 +1.205 +1.07

R44ent₃

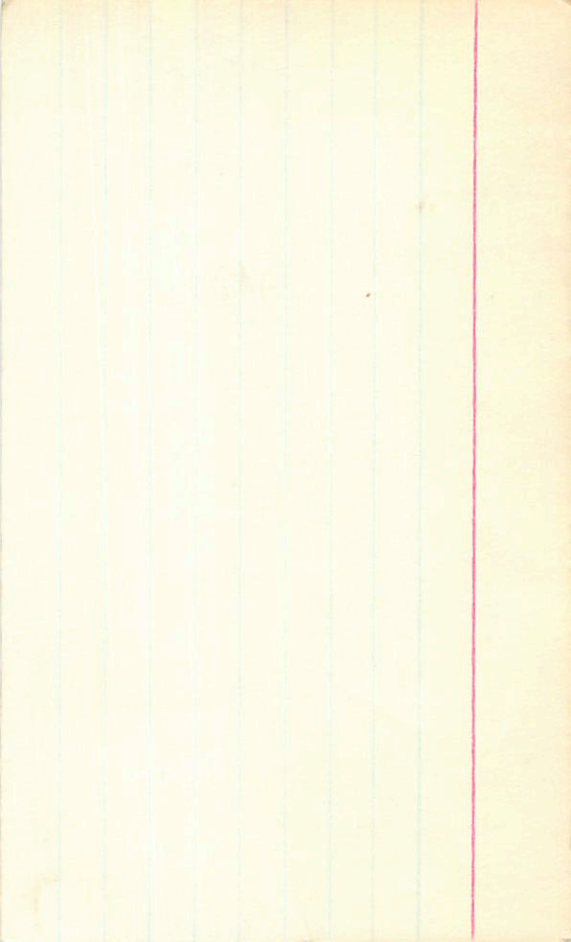
11.99 +0.55

52874 12.02 +0.485

122174 12.02 +0.51

12.01 +0.515

(3)



LFT 648

9 23 54 ->

12 12.66 + 120

0.85 1300

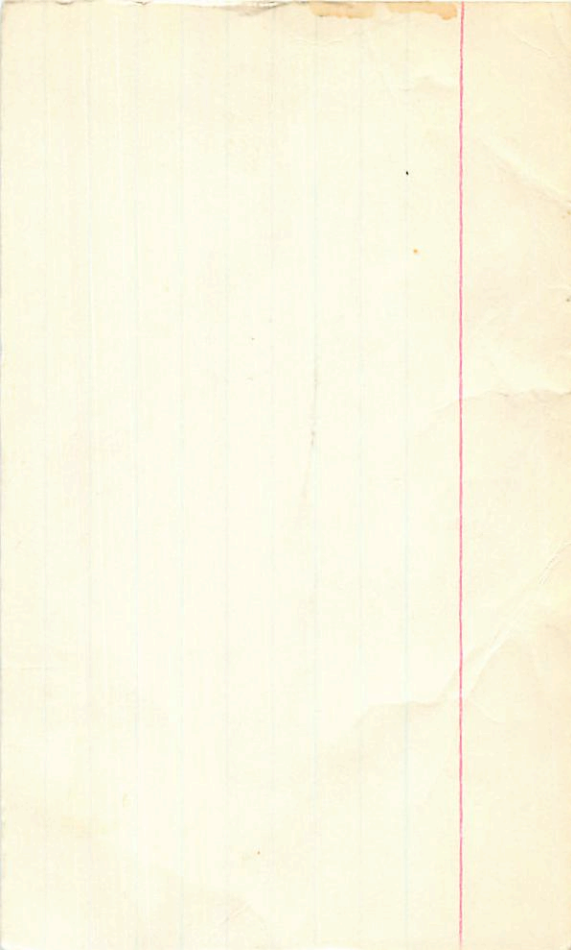
B161-25

605

12.04 + 0.505 3 Jan 71

11.57 + 0.55 26 Jan 71

12.00 + 0.53



B 00094

LF 654

G-41-43 ✓

PR

~~Chart~~

9 30.00 + 20.24

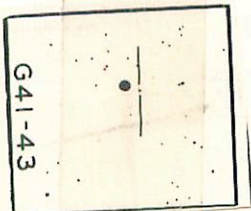
9 28.7 + 20 31 12.9 + 2

.81 141 B
.78 175 RMD

11.31 + 0.98 12m 77
11.02 + 0.92 42674
11.10 + 0.55

X

G41-43



LFT 651

9 27 24 -9

13 143 m 4 071

G161-33

-34

35" 16.4

22 Apr

515

~~1.6~~

12.12

+1.54

+1.115

1 Jan 71

10.84 + 0.99

3 Jan

12.15

+1.54

+1.105

2 Jan 71

11.01 + 1.02

12.14

+1.54

+1.11

11.00 + 1.01

10.93 + 0.95

245/6

22 Apr 71

13.51 + 1.24

13.62 + 1.42

15.02 + 1.865

+1.03

13.52 + 1.34

15.01 + 1.87

+1.48

13.52 + 1.25

+1.25

13.52 + 1.25

BPM 86523

LFT 653

L-1038-28

G-48-20

1770 229 BPM

[177 227 8-]
179 226 8-]

9 28.2 + 00 33

11.73 + 1.60 + 1.22 ③

10.40 + 1.125 ②

-590
-525
0.5
-40

+

22 245 6

9 34 52 - 6 00

9 33.6 - 5 53.5 15.9 + 3

6-161-57

R✓

$$\begin{array}{r}
 12.58 + 1.205 \text{ 22626} \\
 \underline{12.58} + 1.182 \text{ 4279} \\
 12.58 + 1.195 \text{ ②}
 \end{array}$$

X



G16

G161-51

66B242

-705 -250 Be

hFT659

9. 32.7 +36 02

5.40 +0.70 +0.93 (2)

AD57441

G9TV-IV

5.08 +0.255 (3)

5.5-14.52"

.107 (1.2)

AD57445

Posso 440

+760 +70 Posso

LF7656

9 289 -13 17

-1202918

$\delta m = 0$
6 yrs?

.106 (37)

πL
 $+0.53$
 $+773$
 $\sigma = 2.67$

$10.04 + 1.54 + 1.15$ (2)

8.87 $+1.045$ (slat)

nc dm 1

X

POWERS

.841

HPM664

9 35.8 +2 55

G48-25

-315
-270
7.95
+63

L1089-3

CEM76545

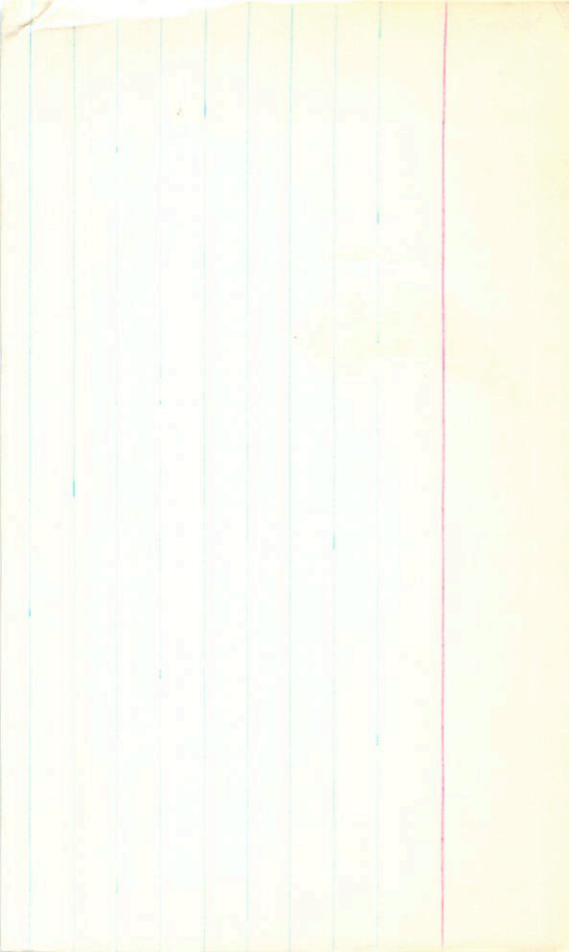
11.98 +1.40 +109 ②

11.06 +0.725 ②

10 3 4
+ 4 5
1 9

X

.86 203G
.800 189 BPM
POW



(Mount)

44-18

R 9

37

15

+22

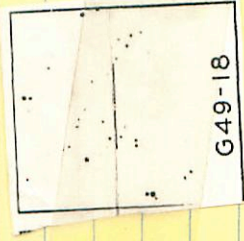
06

13414.9 m

20.7

09355+2214

2143



G49-18

1314 +0.834 20Apr74

BPm73499

LFT660

h966-17

-455

G 161-52-660

2.7

+39

9

33.6

-2 36

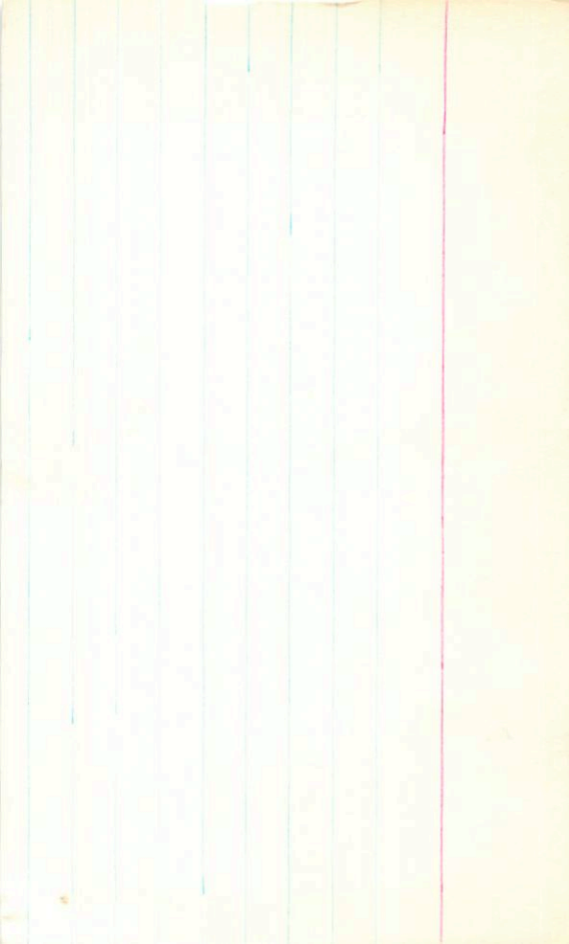
.804 2-12 BPM

.74 217 G

13.59 +1.50 +1.16 ①

12.46 +1.06 ②

X



Van Maanen

.92 238 V M
.92 236 C

~~KEFH~~

9 38.9 45-6 13 14.3 +3

LFTL72

G195-06

Mn +70° 4336

LF 9664/71

9 39.4 +70 16

11.6 M3

G-235-36/35

9 39.7 +70 17

12.3 M4

770 49'

136° 34'

New York Survey
1357 h.m.
1357 h.m.

73 257 G
72 244 LP

LFT664

R Bone 884

648.25

$11.08 + 0.74 = 11.82$
 ~~$11.11 + 0.845 = 11.955$~~
 $11.04 + 0.71 = 11.75$

 $11.06 + 0.725 = 11.785$

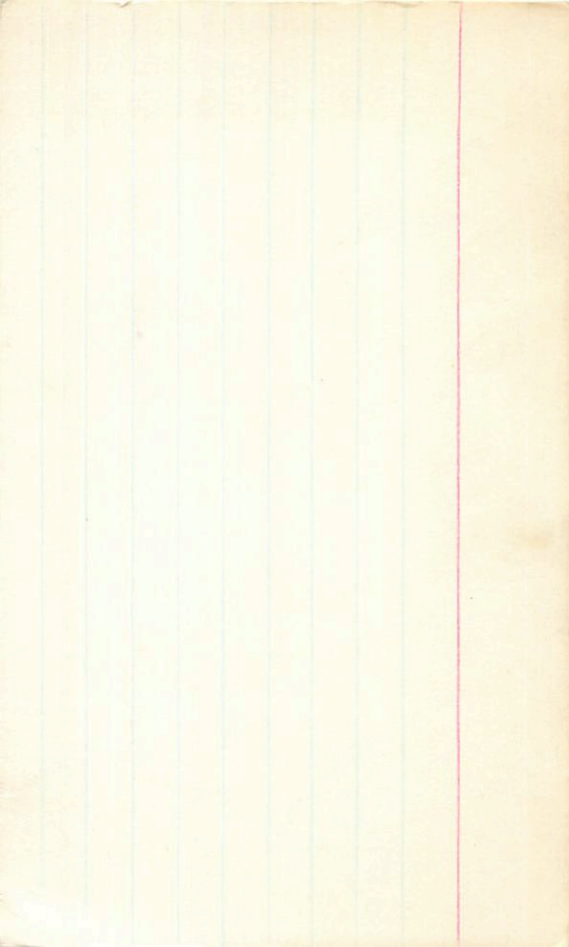
9 36 56 + 2 50 13.4m

~~11.28 + 1.44~~

$11.54 + 1.38 = 12.92$
 $11.88 + 1.44 = 13.32$

 $11.91 + 1.41 = 13.32$

0.80



G-618402

L-1674

+430198

G-116-42

HO 84035

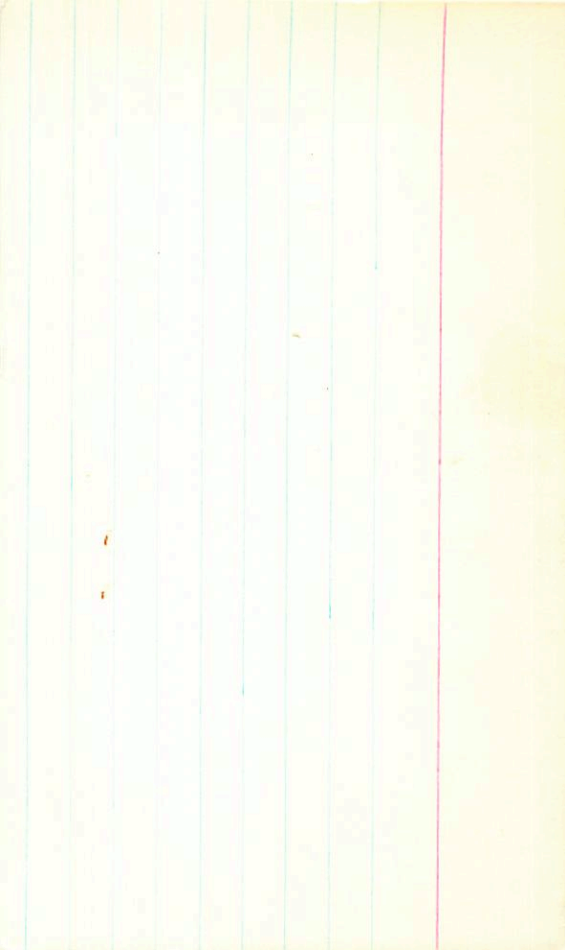
+045-83066

9 40.3 +42 56

8.14 +114 +112 ①

.068 (39)

7.46 +0.42 ②

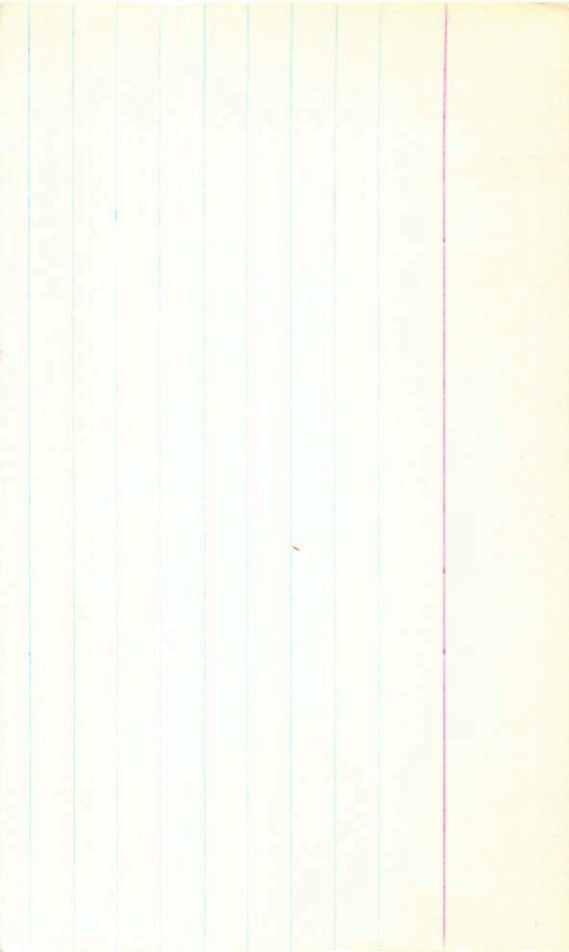


.96 257L
.99 256G

AFT693 9 114.5 +60 30 132+3

L1500-21

G235-40



✓

9 49 15 + 5 05

.712676

648-42

9 48.0 + 5 12 15.2 + 2

-745

-60


3.3

13.07 + 1.065 16 Apr 26

17.

2.9

X



G48-42

84537

9 43.5 414 5.24 9

$$\begin{array}{r} 8.19 \\ 8.18 \\ \hline 8.18 \\ 8.18 \\ \hline 8.18 \end{array}$$
$$\begin{array}{r} +0.16024 \text{ pu } 50 \\ +0.15725 \text{ pu } \\ \hline +0.159 \end{array}$$

9 5-2 49 +10 07.5

.82 1836

G42-25 ✓

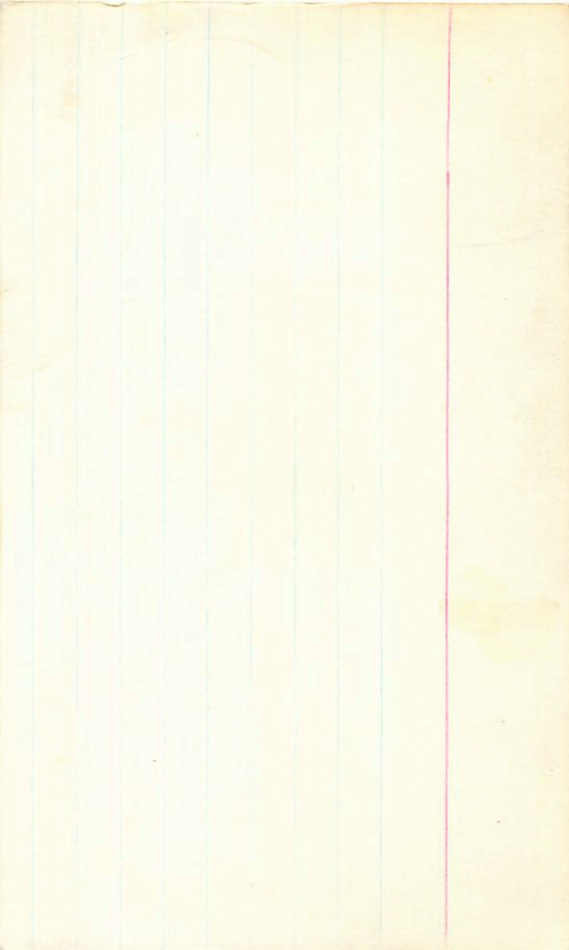
9 51.5 +10 14.5 15.1 +2



X

76
12.50 +1.09 27 Nov

11.8



Fines ✓

LFT682

-45-0³⁹~~39~~78 CRM

(BPM34413)

L 319-7, 745-2120

319-5, 1711 2160

X
73D

-465 -560 Cape

9 43 35 -45 38.5

9 42.6 -45 32

11.8 MZ

I

.728 214 CRM

100
18

happy
to work

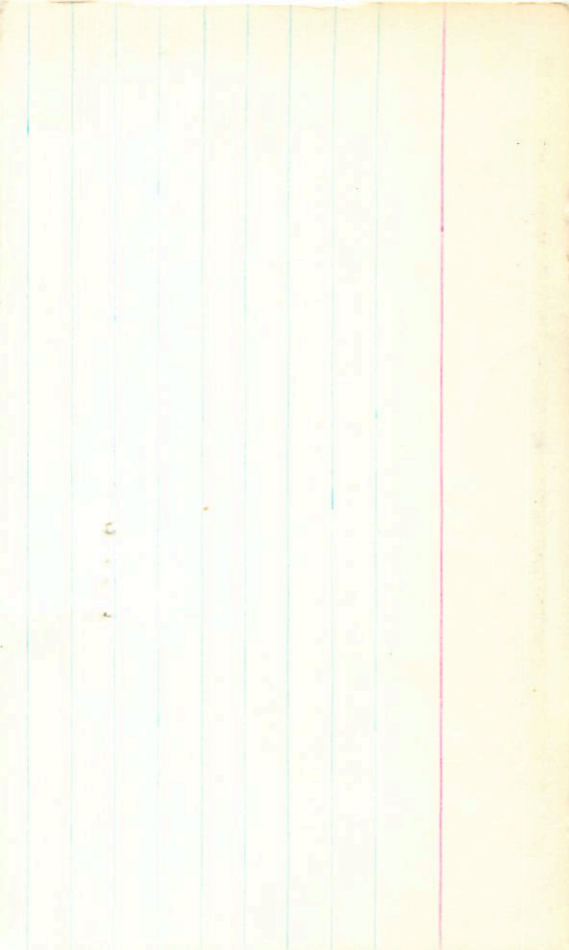
(A)

B next Margaret

9.01 +0.935 16Apr76

.....

-453 -415 C4T





34413

2000

1000

1000

1000

1000