

C-90-39

7

599

+25

44

~~116~~ +3

NO

BPM 50980

LFT 571

L-674-15

OK

~~RE~~

8 11 35 -21 27.5

9 10.5 -21 23 13.8 m

5

1701 175 BPM

1484

10.65 +1.275 2171676

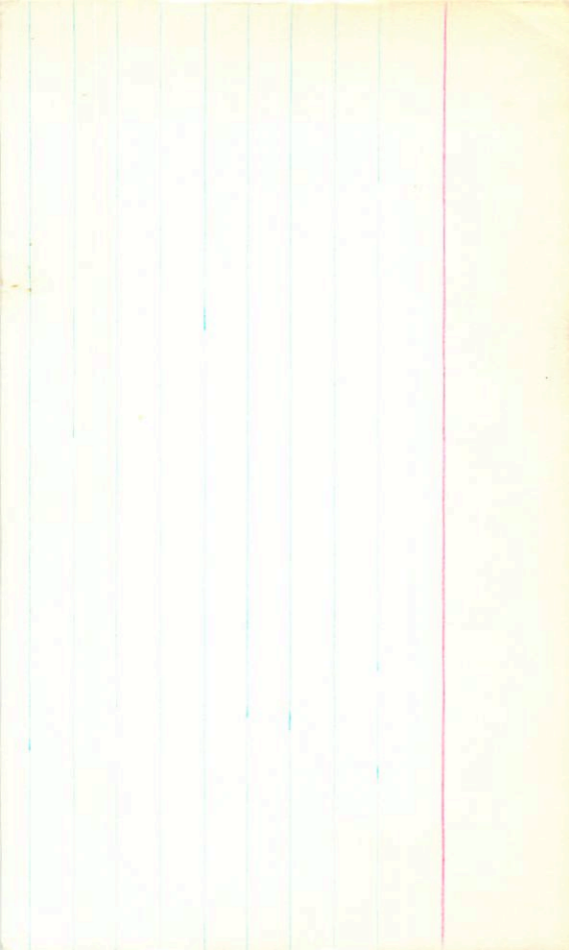
~~16.87~~ 5.901 +1.309 68275

~~10.86~~

~~14.277~~

+1.250

X



605

8 08.7 -52 50

LF7569

6242-66

-835

630

0.85

+84

48-48

11.73 + 1.505 + 1.08 (3)

10.44 + 1.045 (2)

X

GL11247

-240-825 GL

LFT576

8 15.1 +30 46

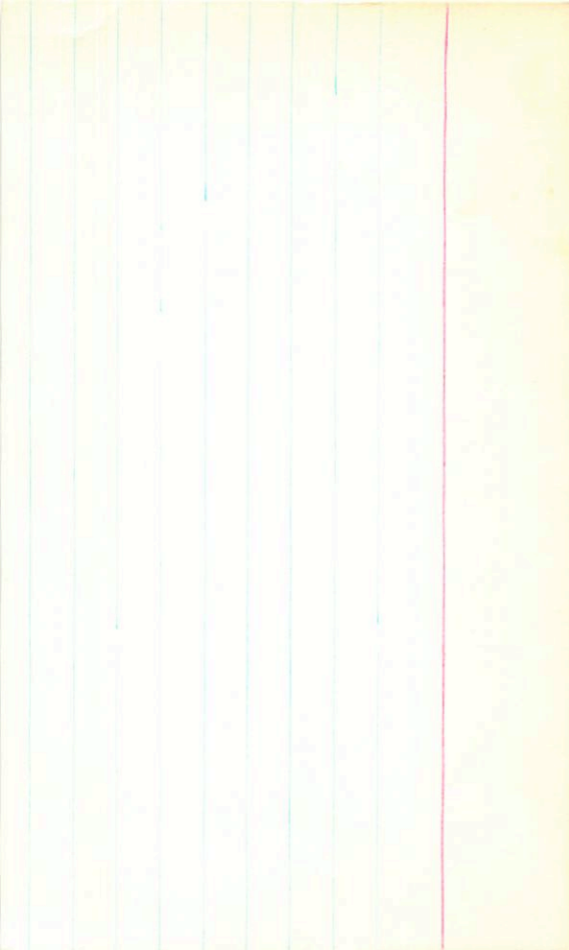
+3101791

.045 (56)

8.90 + 1.15 + 1.10 (1)

G51-6

8.33 + 0.42 (2)



-265 -1365 G

G-234-45

8

37.3

+59 41

16.4 +4

?

185 150 L
187 141 G

8 25.7 +61 54 11.5 +2

LFT596

L1815-2

Q234-35

BPM14032

8 24 30. -59 24

LFTJ89

4 26.0 -59 24

L186-160

16.0 m

Handwritten scribble or signature

.769 2

4032





8 40 44 -1 29

.71 288 B-

C-114-13

8 39.5 -1 27.5 15.2 +3

-714 +186 TT



.020 (12) nwd

+

12.51	+0.985	16 Apr 76
12.50	+0.932	8 Apr 75
12.50	+0.958	(2)



G114-13

BPM 51534

8 89 83 -23 24

.906 337

LFT 598

9 38.8 -23 19

132 m

L678-81 5

2037

4

SUN
TUE

OR

03
50

10.59 +1.18 18 Apr 76
10.61 +1.20 16 Apr 76
10.60 +1.19

6.0 MS + 0.14 to 1.0

My - had
-6.0 MS

X

$$\boxed{8 \ 35 \ 44 \quad +15 \ 13.5}$$

$$\begin{array}{r} .91 \ 189 \text{ B} \\ .88 \ 186 \text{ L P} \end{array}$$

G-9-11

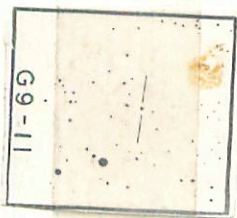
$$8 \ 34.3 \quad +15 \ 19$$

$$12.8 + 3$$

$$13.3 \text{ h}$$

$$10.59 \quad +1.035 \ 27 \text{ h} \ 76$$

X



G9-11

183 219

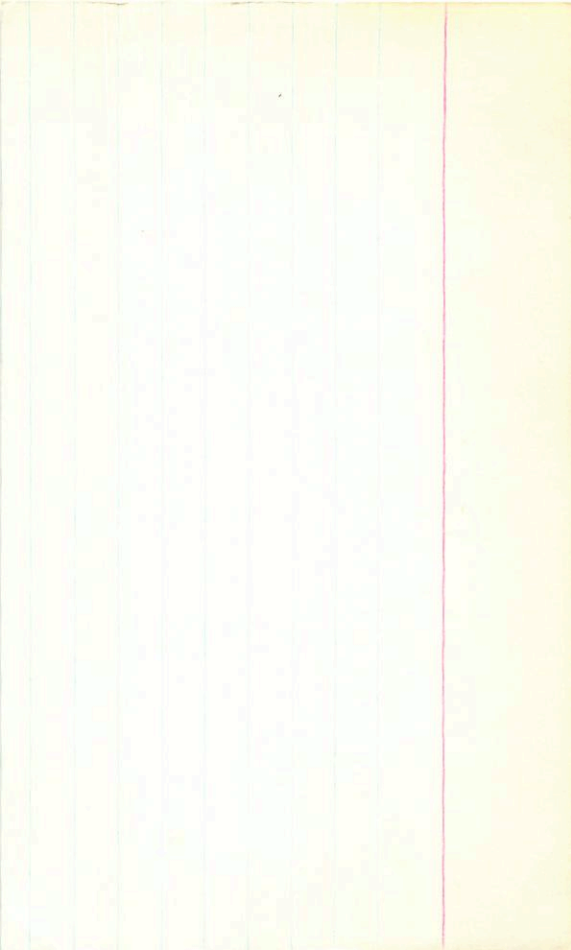
251 -27 8 47.6 + 34 50 16.3 +2

stand

14.71 + 170 1.42

-609 -685 stand

.033 ±004



R000622

8 50 21 +18 13

LFT608

8 48.9 +18 19

13.3 +2

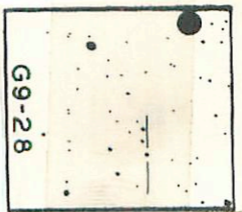
.88 268 Q
.89 263 R000

G9-28 ✓

(108) ✓

10.49 +0.875 22.3676
 10.47 - 10.4880 6.4275
 10.48
~~10.4880~~
 8.74

x



GC12024

LFT603

+4201922

G115-23

HD74377

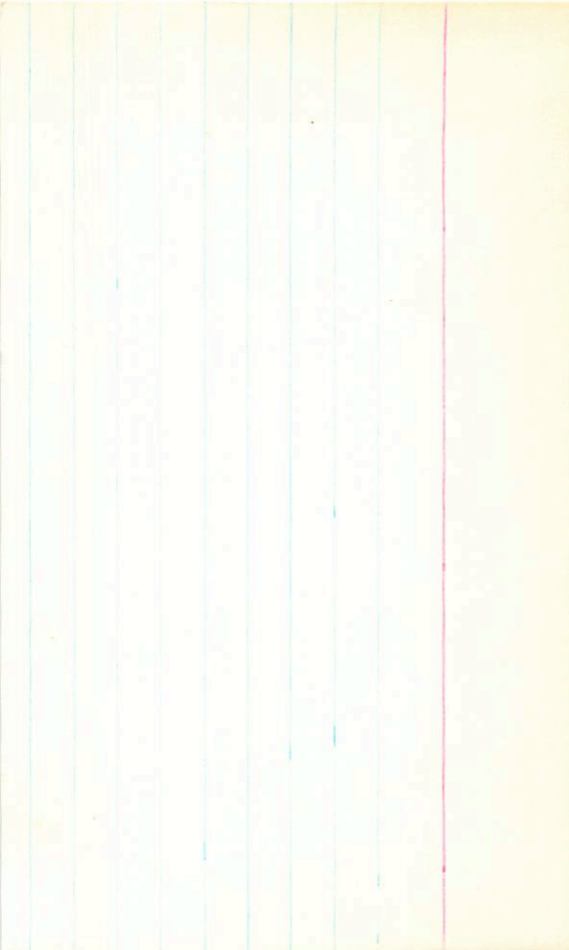
8 41.9 +41 52

.054 (40)

8.55 +10.95 +1072 (2)

.71 2050

-280-650 G-C



BPM33958

LFT629

8 57.9 -47 16

L316-62

12.33 + 1.46 + 1.34 ①

ISS ¹⁹⁴ ~~198~~

11.06 + 0.91 ②

-707

+660

2.0

+22

X

. 823 324 BPM

C 9-34

8 55.5 + 19 57.5

12.8 14.5 m
13.5 15.1 m) 33304"

LP426.40

935-25

818

Noting

11.51

+ 16.6 304777

11.66 + 1.70 122m77

11.58 + 1.68 3m77

11.58
+ 1.68 (3)

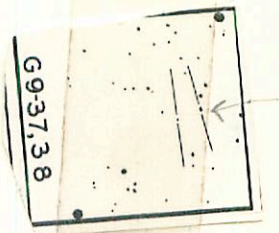
515 51 + 25 75

872428
82428

478.51

872428
82428

G9-37,38



18689 LP36-8

G-252-25 8 54.7 473 09 15.9+4

6280-21

9 86.6 + 84 23

13.1 + 3

LP 6-72

170 305 G

LFT630

9

02.9

463

53

13.342

L196720

G234-55

100 219 L

191 214 6



177 2136

C234-54 9 01.3 +67 46 159 +2

LP60-187

LFT626

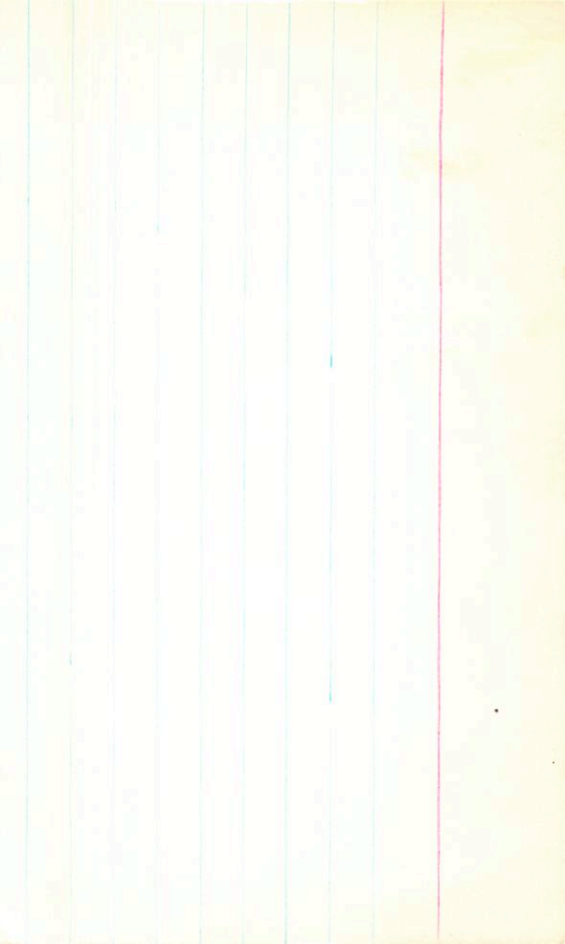
8 57.2 +46 47

9.20 am

L1694-8

G115-42

.72 223 G
.75 214 height





7032

