

+190 1185 6 00.2 +19 22 1950

8100-54

B R R-E 2d MP

2x 272

~~1474-614~~ 1474-614 AC103

11 9.35 +62-06 2 (-1920)

B 13.25 +123 +107  
1370 +126 +107

$\pi = 0.34 \text{ rad}$

LTT2452

6

03 28 -55

16

12.12 +148

+1.15

11.15

+0.94

14 nov 68

+695 +354

11.11

+0.92

18 Dec 68

11.14 +0.93

John 1416 256(5)

297(10)

34

234

90

8.929

7.

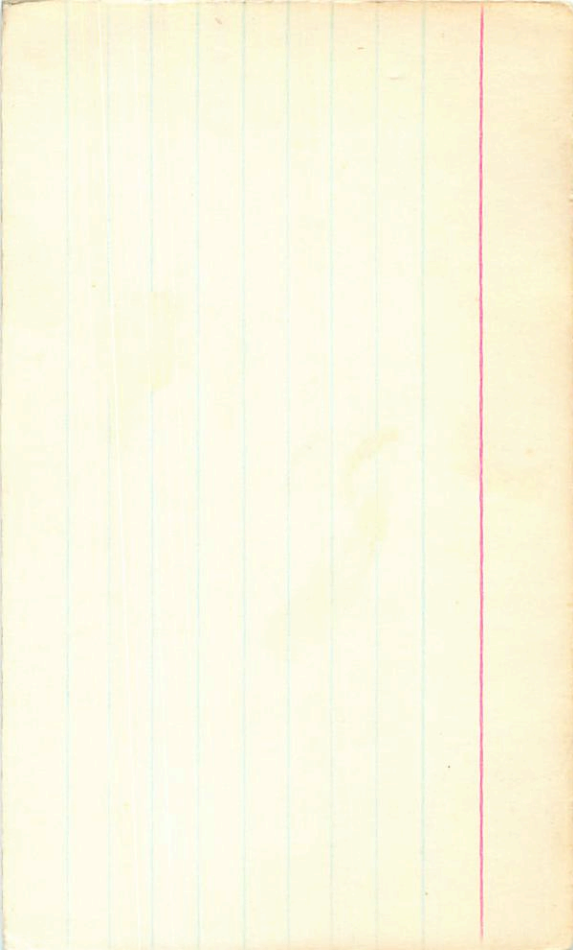
10.71

10.20

1.56

2.31

9.



dividend of NGC 2126

83 174 C

C192-15

5

58.6

+49

52

162.4

6-24-27/22

---

5554

16E 09

~~14-1568~~

51 188 G

41 143 BPM

5 56.7 +59 37 13.5m

LFT44B

L19B-21

G192-B



6 03.4 -55 18 1950

-55

6 02.5

18 1900

-55

18 12.7

LTT2452

12.7 R0.76

6 03.7 -55 18 1966

Chart

12.12 +1.48 +1.15 9 Oct 67 1155

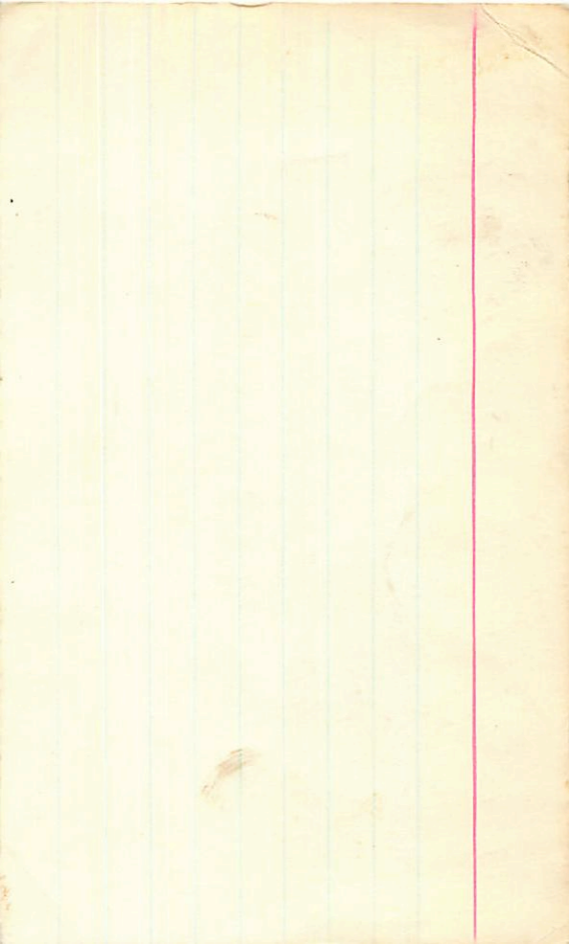
12.18 +1.43 +1.08 22 Apr 68 355

12.15 +1.55 +1.11 1.9

+6

74845





Russ 413

0.80 166 R

0.85 170 G

LFT452

6 03.9 +4 32

G106 -25/26

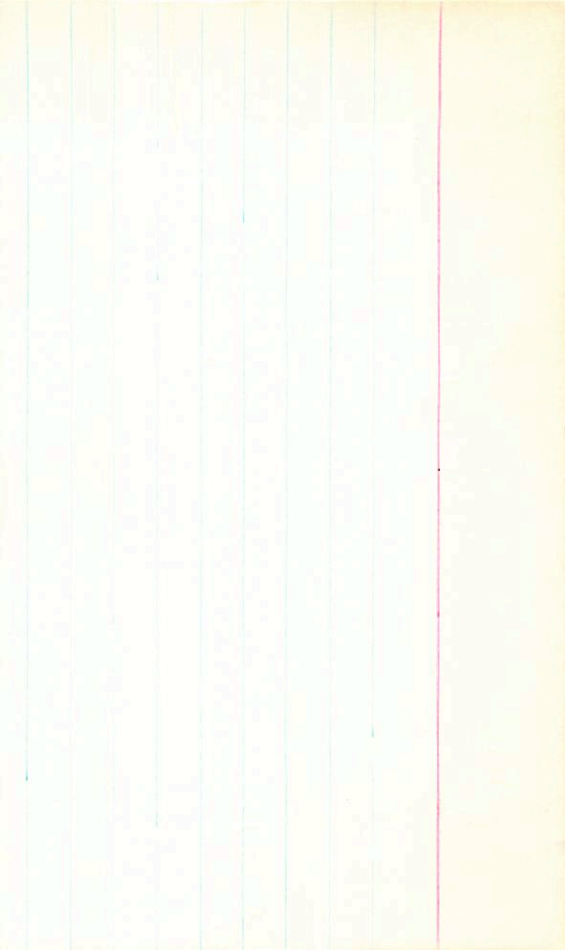
10.91 +1.00 +0.83 (2)

10.48 +0.43 (3)

16"

15.08 +1.34 +0.83

13.91 +1.07 (3)



+190 1185

6 00.2 +19 22 1950

way 267

G1-123 711

B-100-54

small hole

1.0 hole → A {

9.52	+0.58	+0.01	1 Jan 62
9.57	+0.48	0.00	2 Jan 62
9.32	+0.62	-0.06	2 Jan 62

small hole B {

13.17			
<del>13.17</del>	+0.26	+1.02	1 Jan 62
13.32	+1.18	+0.99	2 Jan 62

~~9.32 +0.62 -0.06 2 Jan 62~~

Lin 18-771

LFTY59

6 08.5 -21 50

-2101377

9.14 + 1.50 + 1.03 (3)

BPM44450 0.169 (31)

7.10 + 0.82 (2)

H842581

+5.5

1817 (circled) *unseen*

-125-722 ✓  
-150-700

-100-670 Lin .750 1860 BPM



BP M32466

LFT460

6 09.4 -43 25

L380-75

165

930

-0.4

+25

9.7

of

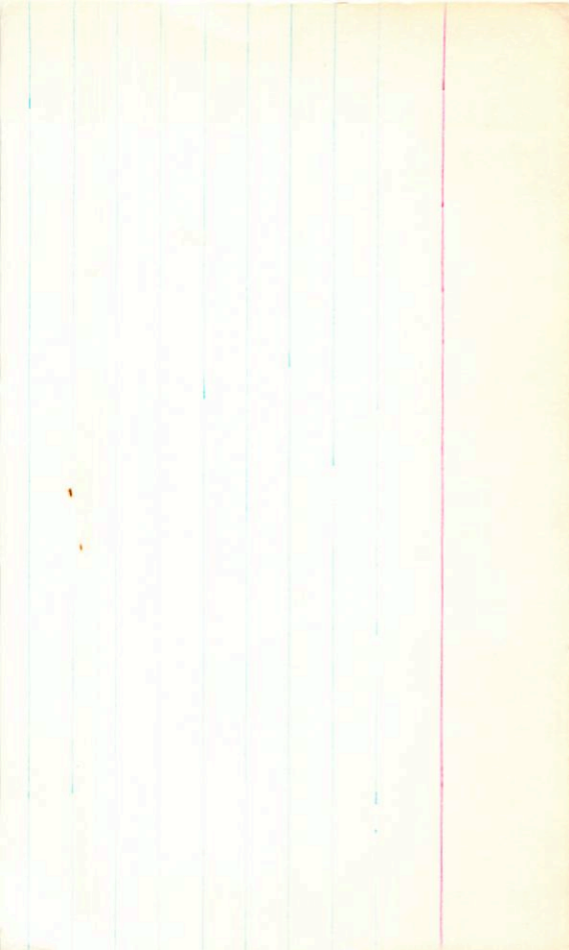
X

12.32 +1.59 +2.65 ②

10.97 +1.16 ②

.732 90 RPM

unchanged





R00079

LFT458

+1001032

G102-5J

11.7-137  
1"

+80-920 km .55 175 G  
R

6 09 35 +10 19.5  
6 08.2 +10 20 11.8 +2

+050-973 T

.10 / (21)

subson

DTG ± 200V VV

+70  
-965

0.0

+51

+

→ 6 10 45 -65 11 ← 6

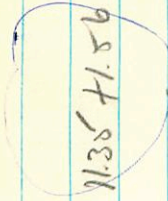
2486

10.7 -65 11

12.3 0.78

NO

2-56



4.00

11.35 + 1.56 + 1.00 69

✓ 1 ⊙

2.70

10.25 + 0.745 - 76

✓

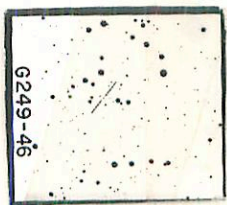
10.32 + 0.77

G-249-46

4 16.1

+66 00

+420 -1100 G



G249-46

BPMY140

LFY461

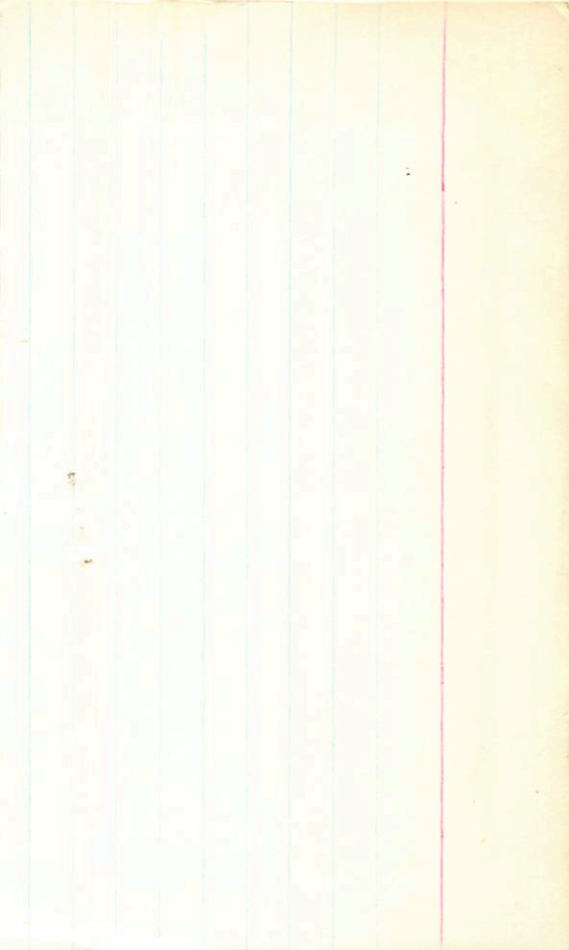
6 10.7 -65 11

h45-2

$11.36 + 1.36 + 1.25$  ①

T37-290       $10.32 + 0.77$  ②

Wendell





6 10.7 -05 11 12.2 k 0.78

LTT 2486

6

10.7

-65

11

12.2  $\frac{1}{2}$  R

0.75 1680

1520

~~1970~~

get change

?

V R-V 2-25

11.36 + 1.365 + 1.25

R R I

10.32 + 0.77

!

check

Play



Ross 614  
LFT473

6 26.8 -2

+755 -655 Ross  
+730 -745 G  
+715 -640 T  
416

G106-49

dmye +24.0

11.10 +1.72 +1.15 (2)

.250 (37)

+720

9.45 +1.40 (2)

-686

Asst. buoy

-1.42

200" tube

+24

X



Rossby

LFT467

G-104-37

DPMB6077

6 2308 +23 27


.74 132 C  
.770 133 RPM  
.77 133 RPM  
17.9 +2

6 21.6 +23 28

✓ (DPF)

11.61 +1265 27.6  
11.11  
+1222-11.58  
11.60  
+1277  
+130

+



G104-37

BPM72012

$[6 \ 21 \ 45 - 12 \ 52] \cdot 875 \ 140^{\circ}$

L FT 466

6 20.3 -12 50

L 812-11

RY1

(P)  
(X)

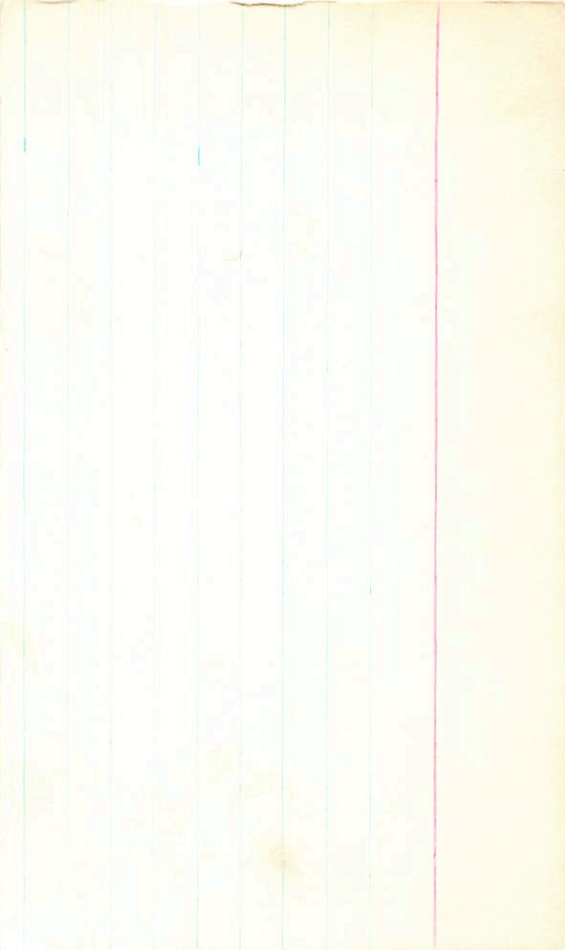
13.18 + 100 + 0.53 (3)

12.59 + 0.42 (4)

X

12.46 + 0.4028 Jan 81

Amesbury



6 35 46 +17 35

0.840 293 wdy  
0.92 294 G

6 34.3 +17 36

11.2 + 2

✓

+170B20

6104-49

M

-763  
-772

9.0

7.7

807 + 74

wdy

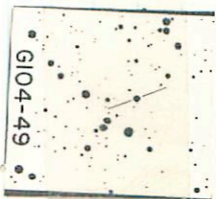
590

8.75 + 0.75 21 Mar 76

X

9.05

9.05



G104-49



531558

6 34 43 +11 39

G-105-46

6 33.3 +11 40 15.2+2

✓

12.72+1.30 07Nov76



G105-46

BOM19284

.872 832 8PM

LFT476

6 33.2 -58 30

L19244

-785

11.62 +1.495 +1.16①

755

10.37 +1.02②

095

.667

-16

X

Herzogstr 3

LF 487

L-1534-1

687-7

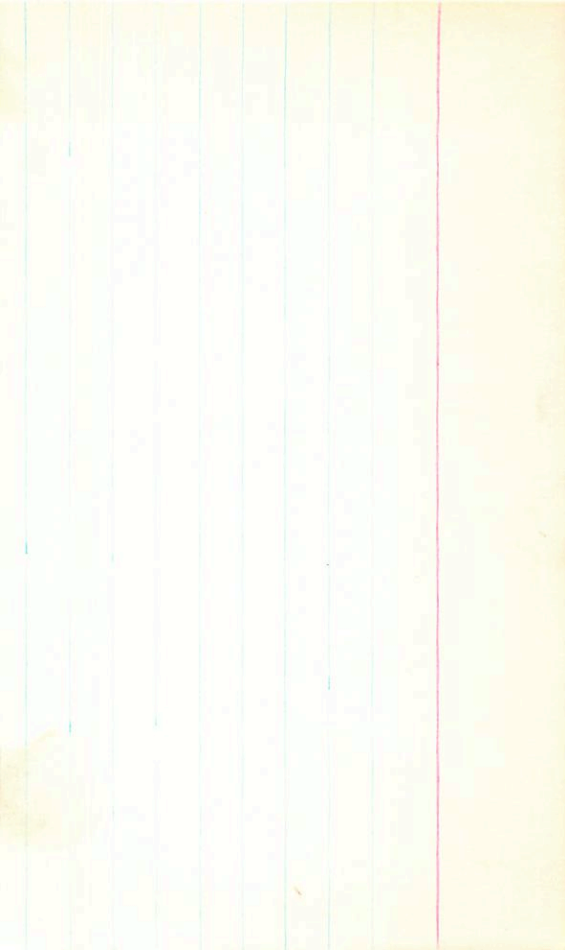
-180 -930 Hndg  
-240 -970 G  
-235 -930 IT  
6 44.3 +37 35

100 1940 G

12.10 -0.08 -0.92 (2)

DA

1060 75



170 2020 G  
.76 198 L

LFTYGO 6 47.8 +47 26

+4701355 9.00 +1.235 +1.165 ②

G107-27 8.20 +0.50 ①



LFT481

6

39.9

+51

11

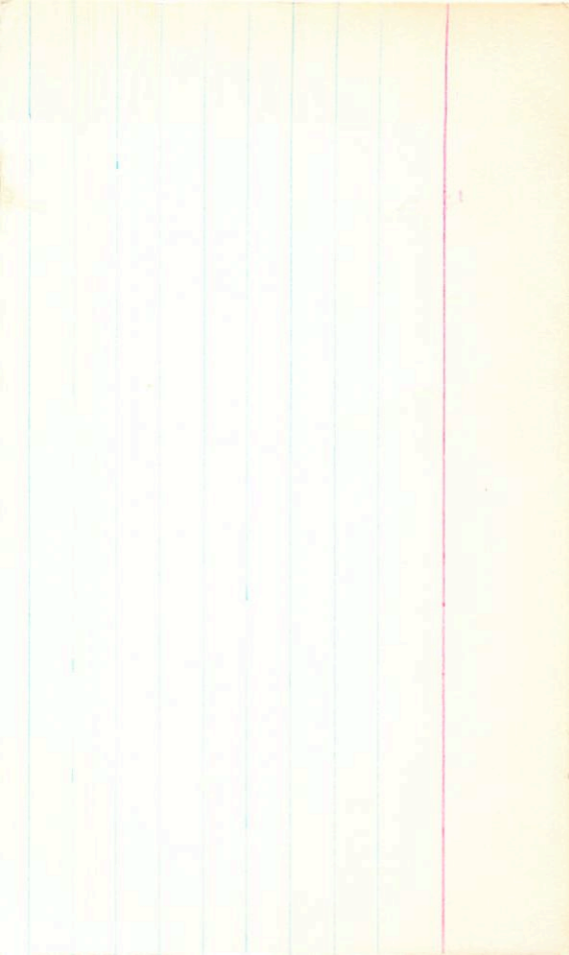
173 +3

G 192-39

11.8-14.3 2"

-80 172C





0192-84

6

52.3 + 55 03

14.1 + 3

071 197 6-2

use from

LF497

6 51.6 + 33 20

" 89 241 C  
" 85 240 way

G47-12

9.50 + 1.60 + 1.20 (2)

8.65 + 1.15 (R)



G-107-34

6

51.4

+43

35

163+3

175026



6108-73

6

56.1 -00

27.4

-0°1570

14051714

~~9.0510.59000~~

9.0510.59 0.00(2)

