

176 1436

3 45 57 + 8 37.5

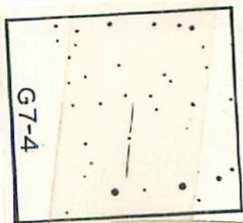
15.8 + 2

3 44.6 + 8 33

13.7 150

✓ 741

12.55 + 1.34 238.77
12.54 + 1.39 25.11
12.54 + 1.39 2



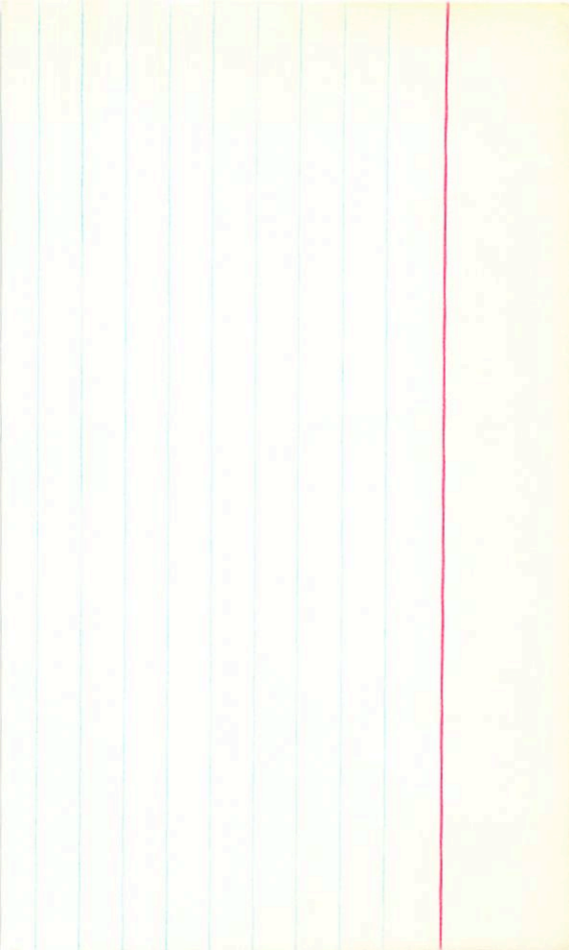
Reeds

LF1324

3 573 451 15

B17513

0.72 152 Rom
0.88 156 G

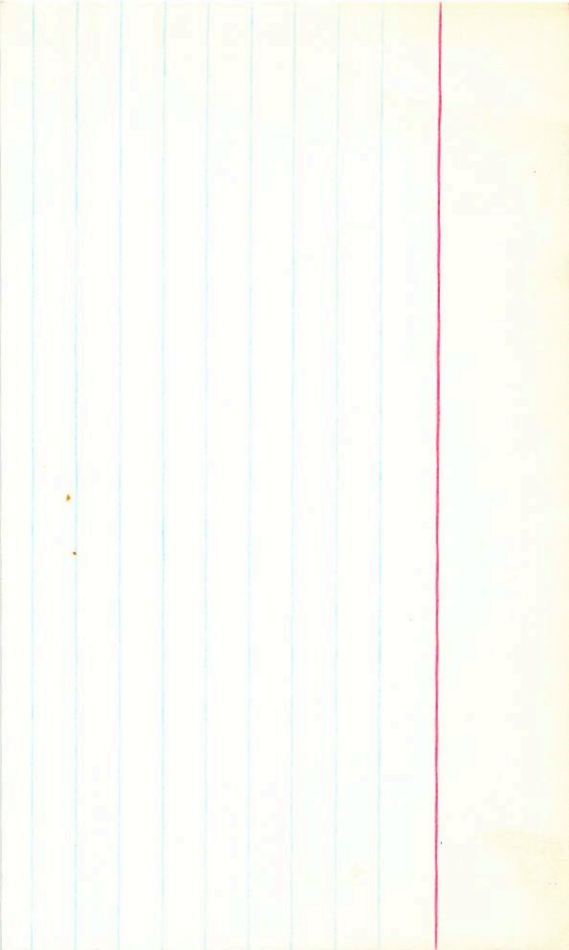


Prooof
BFT 335

4 09.2 +52 30

GNS-19

150 207 Nov
188 204 G



LP 32-16

4 02.0 + 74 15 15.1 + 3

G-221-25

.82 132 G-



Row 25

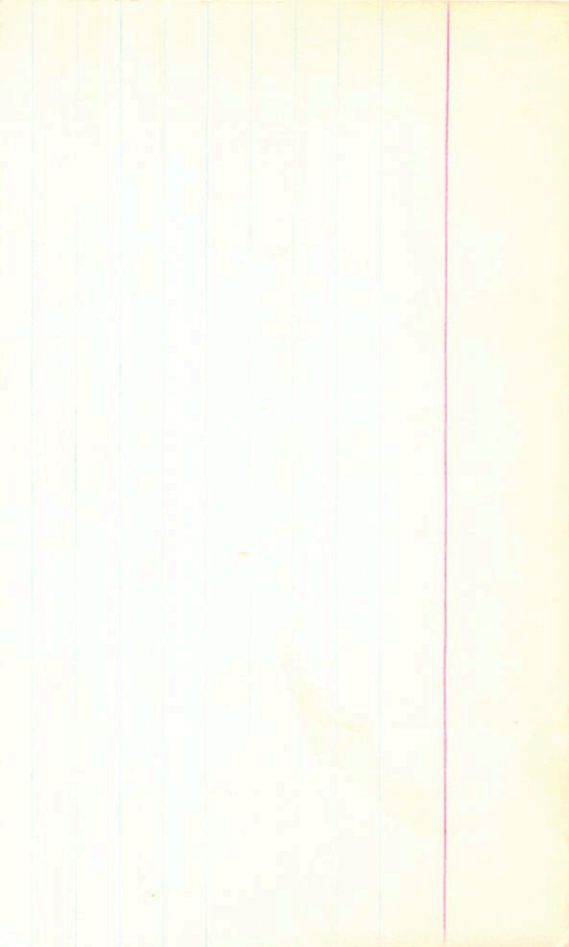
hpt 324

3 573 +51 15

15.4 +3

.88 156 R
.72 152 R

6175-13



Waf/207

LFT 317

$$\begin{array}{r} 3 \quad 51 \quad 13 \quad +16 \quad 57 \\ \hline 3 \quad 49.8 \quad +16 \quad 53 \end{array}$$

$$\begin{array}{r} .77 \quad 148 \quad 6 \\ .99 \quad 155 \quad 4 \\ \hline 15.3 \quad + \quad 3 \end{array}$$

✓

66-39

$$\begin{array}{r} 12.16 \quad +140 \quad 2312.77 \\ 12.14 \quad +148 \quad 25.4 \\ \hline 12.15 \quad \frac{1411}{7141} \quad (2) \end{array}$$

G6-39

Row 873
Waf 1322

LFT 325

G-6-42

LP 357-100

100

819

1255

225

+94

3 58 19 +26 01.5

3 52.8 +25 57

28 113 G
28 107 LP
40 100 waf
140 M5

11.31

11.34

11.32

+1.11 24.11.76
+1.16 Baker 78

F+142
+1135

x

G6-42



BPM 17648

LF-T336

L-230-205

500644

opv 4367
1510
2225

0550

0111 ✓

834

✓

4 12 00 -53 56

11 11.4 -54 00

1387 +1.56 +1.13 ①

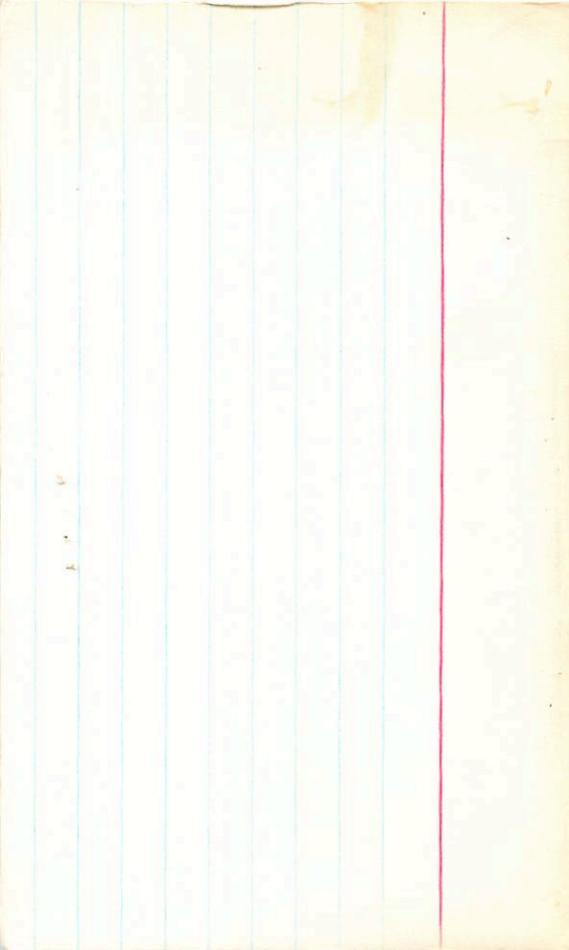
12.26 +1.17 ①

12.38 +1.23 051777

12.27 +1.20 ②

827 880

11.17
1.4





17046

131



PEEL



Radcliffe 3-168

act. 15

.76 133 G
.73 130 Ranch
~~.78 127 G~~

15.6
~~15.5~~

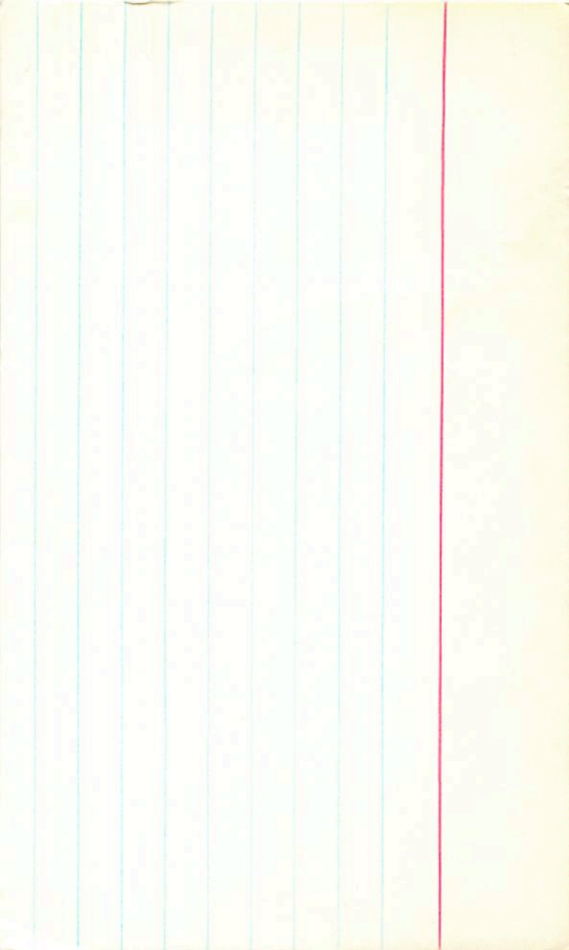
4
+75 02

LFT344

S 143-112

G 248-19

KA



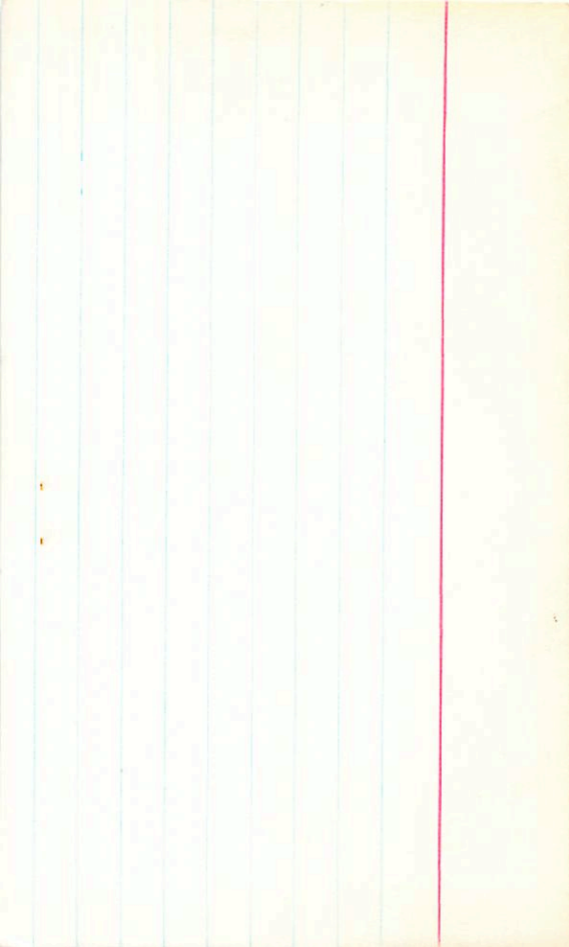
+343 -1047 H

G7-17 3 587 +18 86

~~15.50 +1.93 +1.14~~ ③

~~14.40 +0.725~~ ①

615 (m)



351/2

4 23.1 - 6 5.8

6.0
16.6 } m 3"

L8796

145 - 16.2 } 3"
140 - 15.6 }

4 24 21 - 6 5.5

+240 -970 BPM

BPM 48782

LFT 360

4 31.0 -39 52

h375-2

12.57 + 1.52 + 1.14 ②

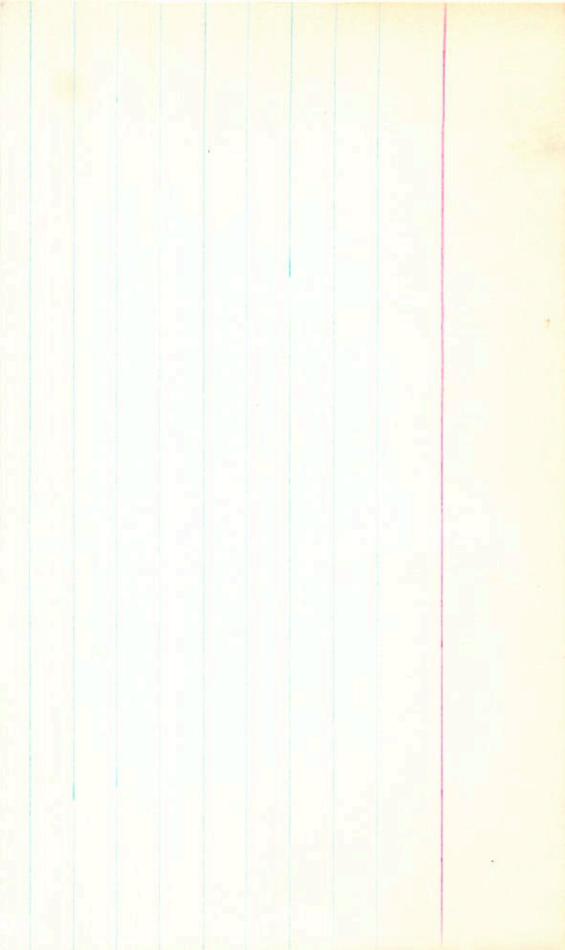
11.43 + 0.925 ③

-23: 3/3
-465

-23
2:15

X

hannicht



0.714 1080

4 39 30 -12 416.5

HP 715-43 4 38.20 -12 49.1 14.3 15.4 p

5 / ~~last~~ food

BPM 17730

.797 210

LFT 348

4 77.8 -57 2.3 13.7 m

W178-47

547

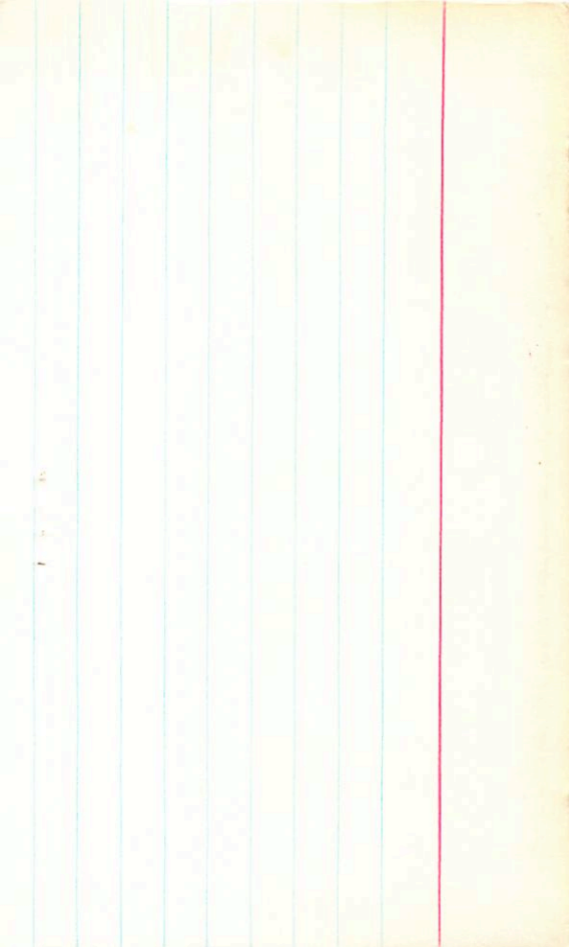
13.30 + 1.555 + 1.115 (2)

750

12.00 + 1.02 (2)

2.6

135





17230

1911

1911

1911

1911

1911

G-81-39

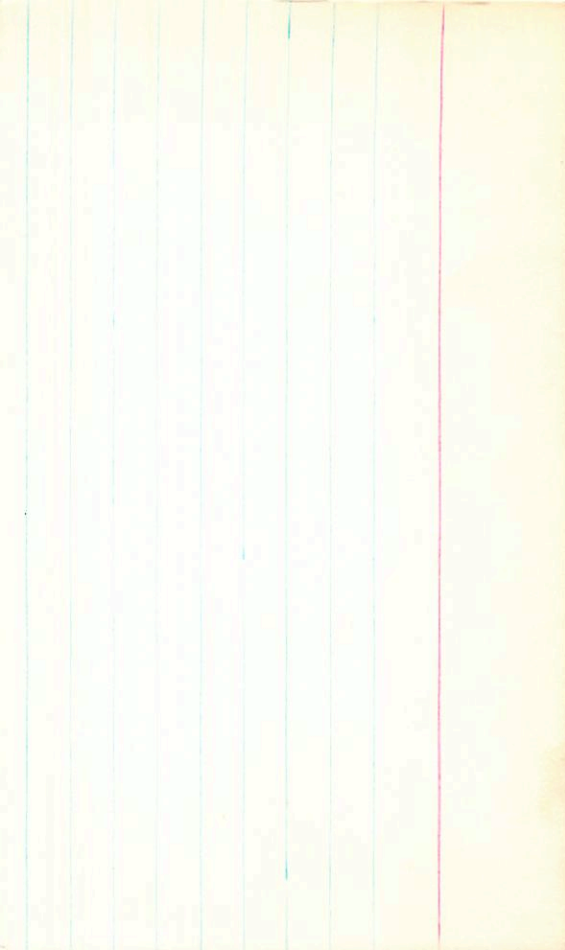
v 49.0 +40 39 14.9+2

+1175-10556

Magnus

+1175-10556

G-91-39 4 49.0 +40 35



4 50 05 -31 37

.894 420

HP 891-27 4 49.1 -31 39.4 13.2 14.4 m

5

1707

(1)

(OR)

711
4605

,

4665

1347 +1.00 2 20.76

2.55

BPM71555

LFT377 ✓

L736-30

406
-617
0.65
-15

4 52 35 -17 42.5

4 51.5 -17 50

12.5 m

.785 1450 RPM

9.75	+0.95	267.0075
9.66	+0.99	302.0075
<u>9.70</u>	<u>+0.97</u>	

