

1.123 2220

13 45 42 +5 51

LP558-40

13 814 27 +5 58.6

14.2 16.0 mm

next 6

0.704720

109 50 -6 06

LP647-18 1 08.6 -6 14 14.1 15.3 h_{max}

quite No. 4185

5901232

87109

10 00 15

85746

Not found by G

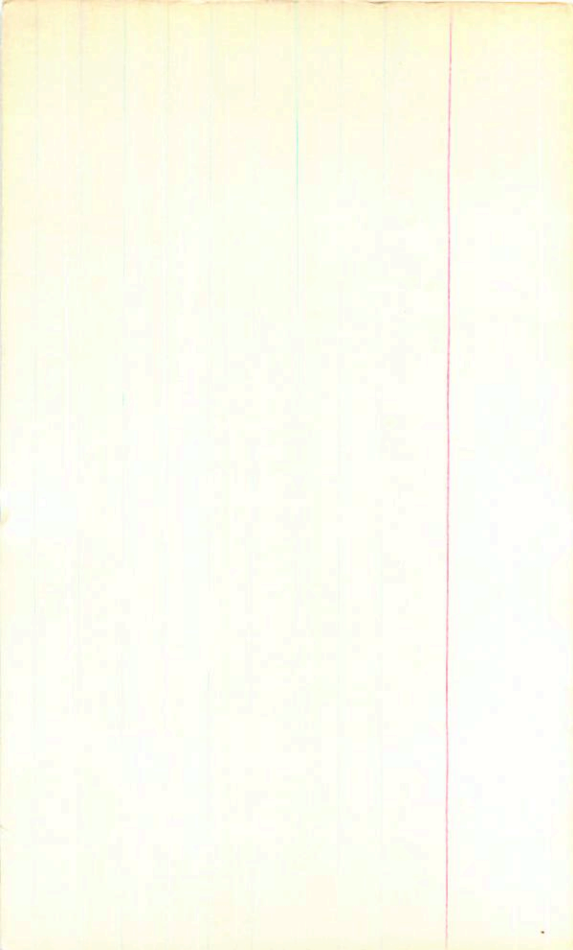
LP675-8

12

21.9 - 4 27

14.2 15.8 m

1.30 24⁰



23 11 58 -11 14

0.841040

L19762.4

23 10.7 -11 22.5 14.8 ~~14.3~~ ~~14.0~~

L1453911 →

23 10 40 -11 22 30) 14.7 15.2 h

done - 1/50 v

23 10 41.8 -11 22 39

14.9
14.3

2 34 17 -25 11

0.82888°

LP 930-16 2 33.2 -25 17.7 13.4 16.0 M

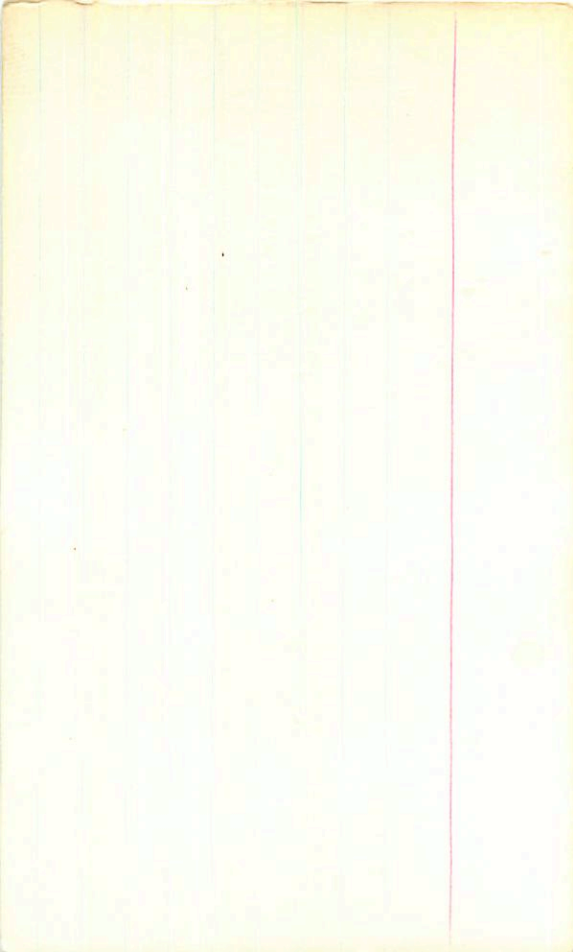
old data $\pi_{pt} + 0.00 \tau_n 130$

$m_I + 10.0$

1381	+122	29	16	76
1384	+126	28	17	77
1382	+124			2



x



LP 649-16

1 49.35 - 8 28

.78 43 8
-803 45 L P

G271-163

1 48.4 - 8 35.5 16.0 +3

14.2 15.8 m

799

$T_r = 125 \text{ h/m}$

π_{at} 020
 M_I +9.9

→ 15.3

1380	+1265	10/2/76
1384	+1285	23/1/77
<u>1383</u>	+1275	②

G271-163



$$\begin{array}{r} 00 \\ \hline 34 \quad 36 \\ +10 \quad 20.5 \end{array}$$

$$71115 - 4706$$

G32-35

$$00 \quad 33.8 + 10 \quad 12 \quad 16.4 + 3$$

✓

$$\begin{array}{r} 13.59 + 1.48 \quad 13.6076 \\ 13.61 + 1.49 \quad 23.2977 \\ \hline 13.60 + 1.47 \quad (2) \end{array}$$

G 32-35

[2 08 55 +10 13]

0.72 247⁰

LP469-67

1 59.6 +10 06 16.2 m

✓

14.8 16.3

→ 1363 +165 23 Aug 77

00 37 53 -4 52

177 943 6
1726 143 LP

022026 00 36.6 -5 00

16.1 43

LP645-94

147 15.9 42-m

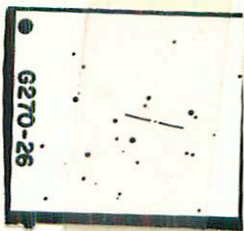
L175 1113 00

38 36
~~39~~

4 -4 589

1484 40.57 138476

7-51-1



G270-26

Letter 57211 5231

~~Handwritten scribble~~
✓

2141-42

51

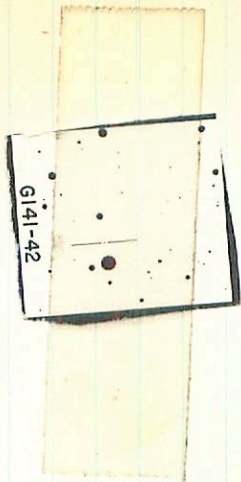
677

50 4+

2+ 591

→ 591 DC.

70 404 45 317 Δ1



276-154/5

1 06.9 -5 23.5

16.8 +4

16.8 +4

X

8"

1420 +1085 25 Mg77
 1421 55014 28 Mg77
 1421 +109 ②

(N)

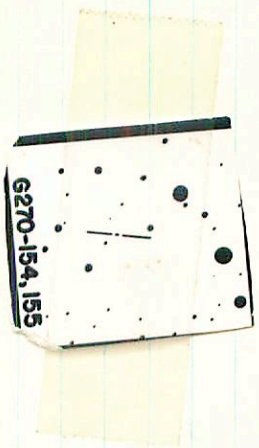
⑤ 1444 23 Mg77
 1424 55014 25 Mg77
 1424 +113 ②

178 26
 179 29

178 26
 179 29

1 08 10 -5 15.5

G270-154, 155



G-52-15

Chert

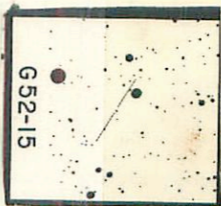
Asphy

8 28 46 +4 16.5

8 27.4 +4 21 15.7 +2

15.50
~~14.50~~ +6.565 12mm 27

A B



G52-15

BPM
15974

000 01 13 -63332

0.710 221° BPM

LFT 2

0 00.2 -63 40 14.3 m

L122-81 .696 2230

L164-124 .725 2190

X

13.20 + 1.445 14.645

10.15 + 1.155 11.305

13.25 + 1.61 14.86

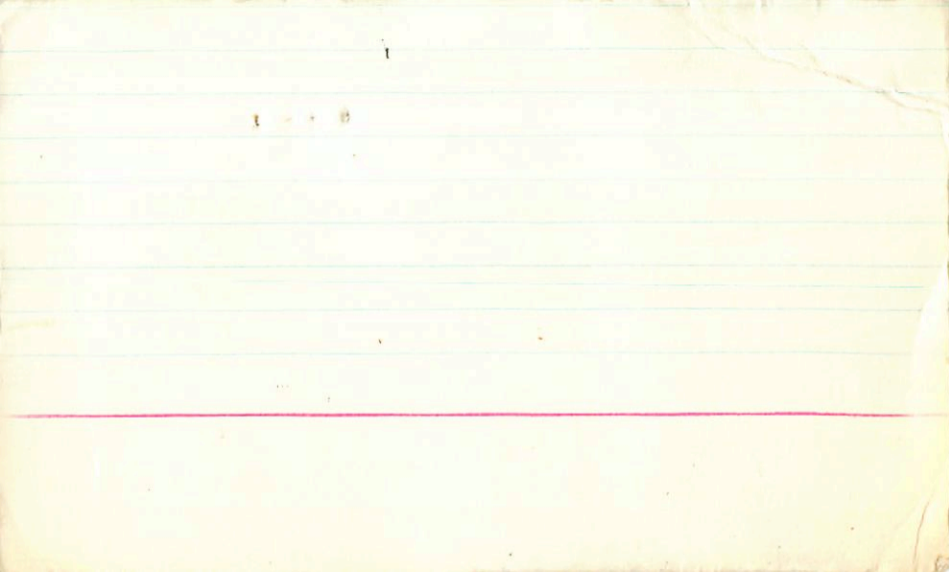
11.92 + 1.12 13.04

11.57 + 0.97 12.54

11.57 + 1.00 12.57

11.65 + 0.95 12.60

11.60 12.975





12, 14

BPM H0943
~~641~~

49230.64 440 LP

+680-105 BPM
+740-170 G-
710

641

LFT112

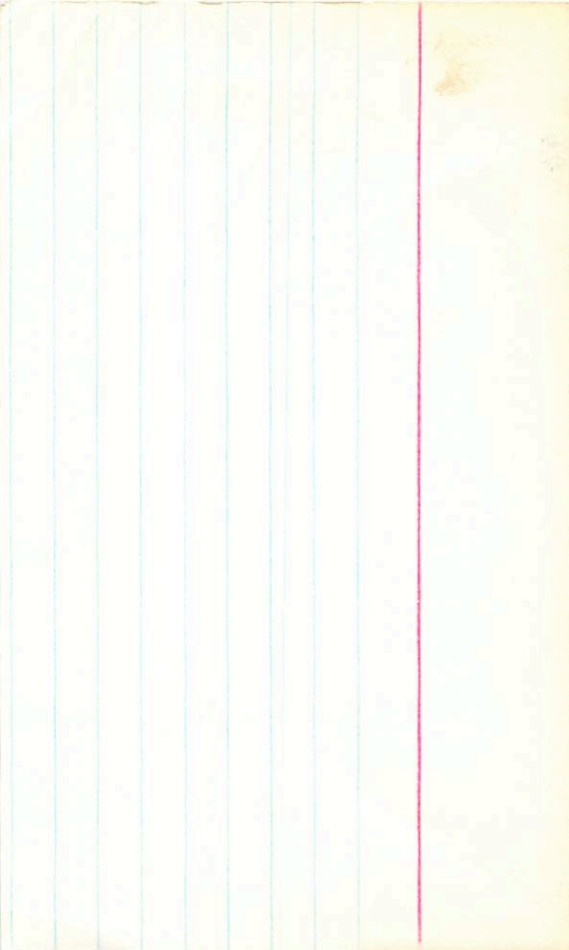
1 059 -24 04

L581-85

1345 +170 - ①
12.02 +129 ②

G264-106

X



GC44

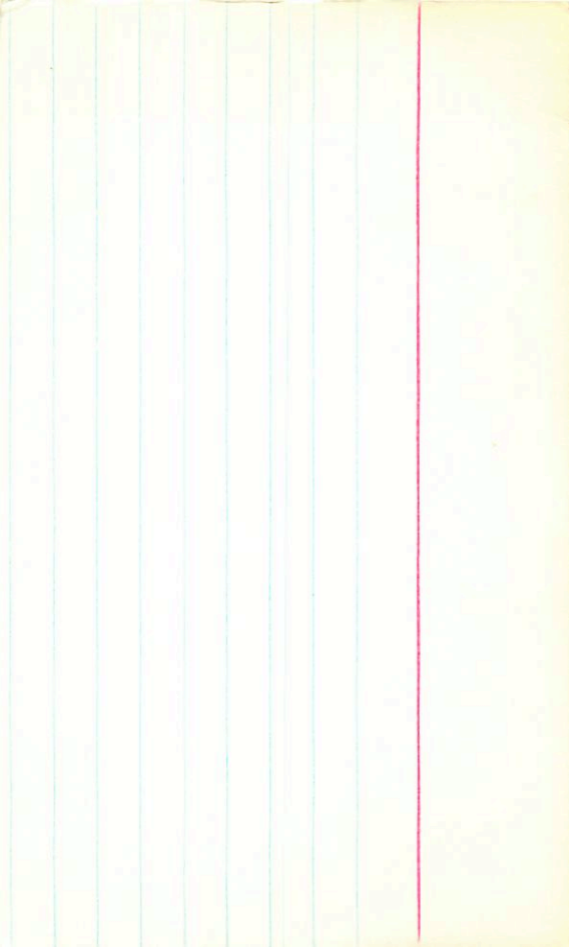
LFT4

+330488

HR9107

0 02.3 +34 23 G2E

6.08 +0.64 +0.05 (2)



BPM 46079

0.485
0.727 960 BPM
0.72 1030 G

LFT 18 00 09.1 - 89 30 9.9 m

910 1025

3903 000

3906 000
3907 45

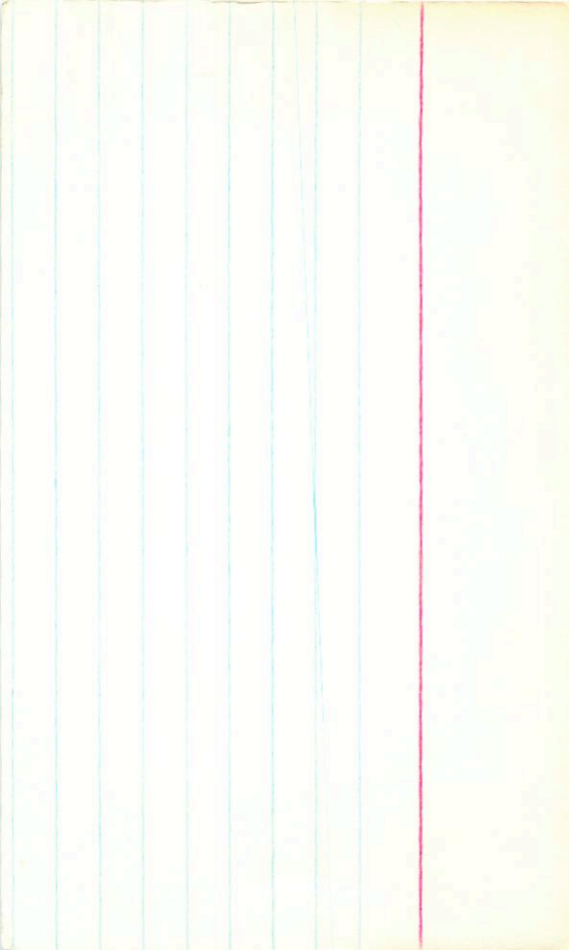
4 7

39 00

9.99 + 1.035 + 0.965 (2)

9.39 + 0.445 (3)

+



Fagerholm

0.89 100°

LFTH

00 02.6 +45 30

44404524

+0.50 ^② 2000

9.85 + 1.50 + 1.80
9.97 + 1.45 + 1.55
① 8.17 + 0.17 + 58.5

LFTH/9

00 02.0 +45 32

44404508

0.89 100°

GC 7/1/72

0.69 2000

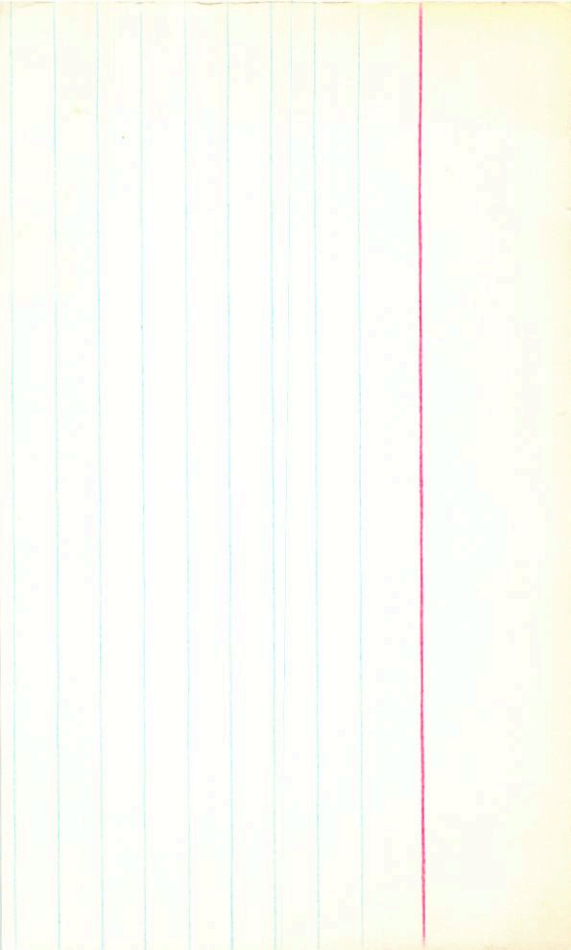
8.43 + 1.47 + 1.21
① 12.17 + 1.47 + 1.21
② 12.17 + 1.47 + 1.21

0.69 2000

8.43 + 1.47 + 1.21
① 12.17 + 1.47 + 1.21

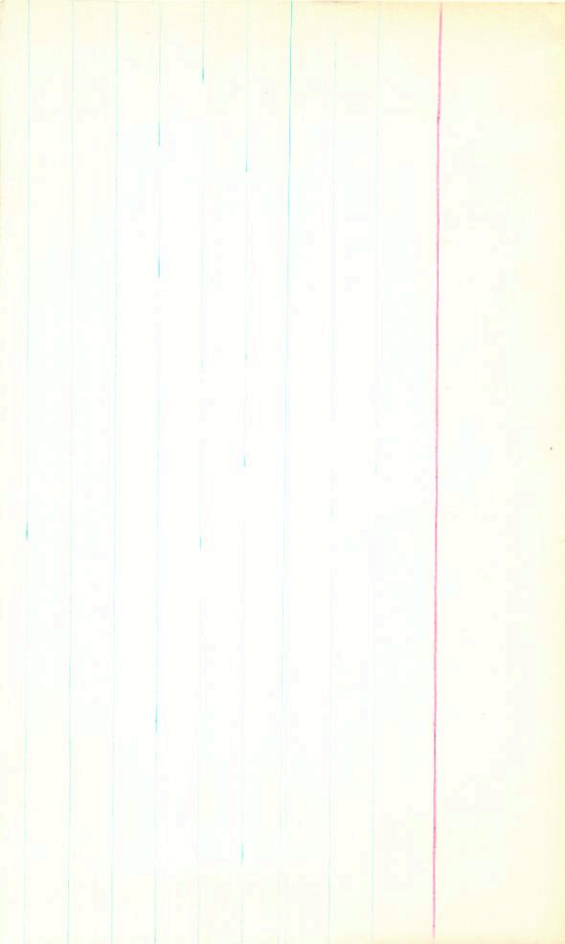
0.69 2000

8.43 + 1.47 + 1.21
① 12.17 + 1.47 + 1.21



G217-37 00 09.6 + 50 09 14.30

2010.5.1



LP880-3M

00 03 31 -30 10

.683 203 LP
.770 206 G

G267-23

00 02.2 -30 19

16.2 44

727 2045

0.0
-30.3
-34
-660
5.00 ←
⊕

Repair ✓

13.70 +0.635 23 Aug 77
13.93 +0.63 13 Dec 76
13.94 +0.68 14 Aug 77
13.90 +0.65 (3)



G267-23