

80-23 ✓ 03 48 20 -03 23.5 138 149 h

1595



B53 +0.606 52479

64 017-3802 04 02 40 -37 57 14.0² - -

DC

wp

() (DC)

1365

✓

162x

1325

1/22/19. 14. 1979

3 51 10 -46 00 | 0.51 1150
~~3 50 50 -46 01~~ 15.2 h

LTT 18.5
03502-4605

14.31 +1.255 +0.91 2000 h

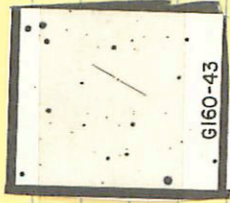
1606



13.54 +0.5729 h
13.46 +0.514 19000 h
13.50 +0.540 (2)

160-43 04 03 10 -13 45 13.2 1.8 m.

✓ 16204



1303 4104364275

04052 -2437 ✓ 04 06 25 -24 32 12.0 148 m

6/8/90 2000⁰ JR

1630

11.00

~~10.00~~

+1.181 6.200.75

16.57 +1179 8''

10.55 33.01
081.14 = 11180

82-4 / 04 13 40 -01 12.5 B.6 15.6 19A

✓ 16ms



1369 +1050 6.2ms

0416 -2255 ✓ 04 11 50 -22 53.5 / 13.2 145 k
16th / 15.8 17.4

(•)

(16th)

~~1641/40~~ (+)

12.18 7.118 14.28
12.18 +1.106 7.118
12.18 7.110

0.62
13.48

4 16 20 -26 06
4 16 48 -26 06

0.17 + 1.00

(6.5) 10.91

(11.19)

10.78

10.77

~~10.78~~

10.90

10.81

126
18
17.6
14.3
14.3

+0.705 28 Dec

+0.72 27 Dec

+0.75 19 Nov

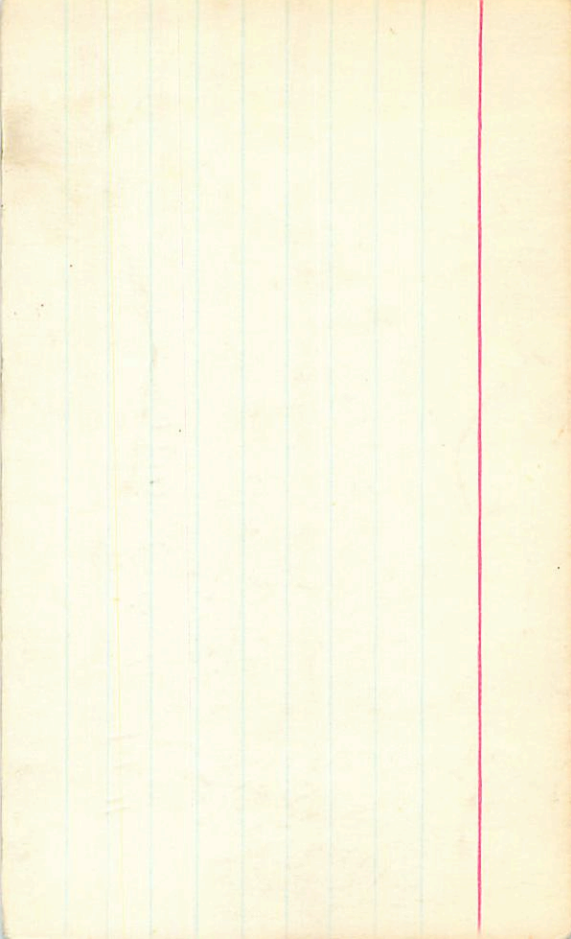
+0.75 18 Nov

+0.73

+0.746 22 Dec

11 = 0.15

ad



8-22 04 16 16 +23 25.5

11.6 129 183

(7)

1653



10.60

+0.535 20W

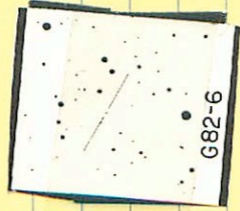
80

G8-22

82-6 04 14 40 -01 30 146 15.9 km

Open Field

✓



1469 +0.644 km/s

04166-4910 041725 -49065 132142m

①

1659

1190 +1105 60005
1186 +1099 70000
1188 +1102

82-9 04 17 00 +01 14 14.7 16.2 m

(A)



13.84 +1.226 N.170

82-13

(1161)

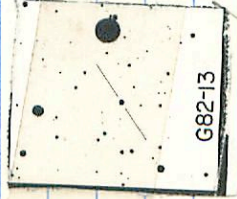
(+)

4 20 05 +06 03.5 11.6 12.7

↑

5144 0710
8544 998

5440



G82-13

0.5

11-3

508

11.12 +0.508 20080

11.13 +0.510 73053

11.12 -0.5090

04217-6747 042145 -67 43 13.0 14.5 m

✓

①

166~

11.69 +0.988 666278

04213-5733 04 21 50 -57 29 12.2 13.2 m

✓

①

1645

10.58 + 10.27 6.11.25

9.55

9.3

04233-4009 ✓ 04 24 20 -40 05 134 149 m

of the

①.

1668

12.48

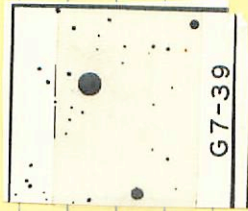
+1325 6 Dec 78

7-34

(7)

04 26 45 +11 44.5

137 148 k



12.46 +1150 78050

04196-4846
~~047435~~

4 20 25

-48 42

150 148 f

0.556

14.70 to 0.525 - 0.483

NET 349

LT 195-1

L302-89

4 13.6

-4846

1950

1485.056

Dr. 11-15-50
Dr. 11-15-50
Dr. 11-15-50

2.0% 900 SH -
light 5/21/72

2.0% 900 SH -
light 5/21/72



LF 349

26

PEEL

PEEL