

LHSM12

2

29

40

-15

48.5

120 13.5 m

11.87 + 1.056 226.87

02409-3509 ✓ 02 42 05 -39 01 130 148 cm

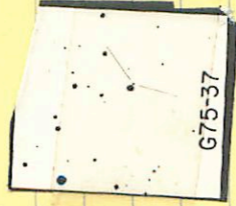
○ . jhr

1424

11.80 +1.089 7 Dec 55

75-37 ✓ 2 42 05 +05 23 132 145<sup>m</sup>

(1435)



Q

1328 +0.581 224224  
1328 +0.577 224227  
1328 +0.579 224229

16784 2 39 18 -30 16 8.0 60

$$8.02 + 0.56 (-0.02) \text{ days}$$

$$8.02 + 0.575 - 0.0730 \text{ days}$$

$$\rightarrow 8.02 + 0.57 - 0.06$$

$$8.01 + 0.57 - 0.04 \text{ days}$$

243

1432

$$7.72 + 0.23 \text{ days}$$

$$7.80 + 0.24$$

$$\underline{776 + 0.225} \text{ (5)}$$

$$7.77 + 0.21 \text{ days}$$

$$7.80 + 0.24$$

$$7.84 + 0.21 \text{ days}$$

$$\underline{7.80 + 0.21}$$

320  
b

4-43 02 49 25 +15 38

8.1 10.4 MS

1473

(+)



8.29 +0.422 10 Sept 80

1580 15660

437

02462 - 3055

1948

02 47 30

-30 48

13.9 14.4

m

(7) (X)

11.71 70.798 6.0250

11.72 70.820 8.0281

11.72 70.809 (2)





02705-5817

[1437]

2 43 30 -58 10 13.3 14.5

me

~~Ⓟ~~ Ⓟ

0

13.55 +0.589 6/2/80

02486-5321 02 49 30 -53 14

-530570

10.3 11.4

① ✓

9.65 +0.919 27 Jun 70  
9.65 +0.919 20 Nov 70  
9.65 +0.919

02502 -3424 02 51 30 -34 16.5 17.3 15.8

176.1

(X)

1405 +113668680

75-43 ✓ 02 50 30 - 7 30

139 15.5<sup>ms</sup>



1377

40.859 20/2/74

02519 -1535

146670

02 53 30

-18

30.5

13.9 15.2

h-m

59" (16.8 15.6

(A)

~~John J. J.~~

(A)

14.49

+0.622 66850

36-41 02 53 00 +26 46.5 17.3 159 mm

(+)

1462



13.51 +1.078 1052/80

02535-2409

m

1472

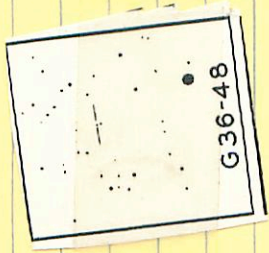
02 54 50 24 02 142 157

(+)

1404 +0.652 2080

36-48 02 58 15 +25 31.5 140 15.3 4-  
mm

(+)



1354 +0.941 105.480



02563 24 16

m

1482

02 57 35 - 24 09 13.0 14.4

(+) ⊕

13.15 + 0.544 = 13.694

13.20 + 0.5078 = 13.7078

13.14 + 0.528 = 13.668

02558-1306 ✓ 02 57 10 -12 58.5 11.3 13.2 911

R

⊙

1481

11.42 +1.0225g29

03027 - 41 76 03 03 45 - 41 40 13.5 - -

0 .  $\sqrt{\quad}$  0 hr

1463

1278 + 1148212879

03018-2034 ✓ 03 03 05 -20 27 11.4 147 m

①

• Or

1461

10.96 +181 5 Jan 79

76-62

03 07

57

+09

57

144 162 m

1504

(+)



13.11 +1470 105.780



0230-5137 ✓ 03 13 55 -51 30 12.0 13.5 m

✓  
N

(10)

1-021

1519

10'

11.52 + 100.1 8 June 79