

264-171 | 27 36 -29 35.5 154+3

996-395 15.7 m

1253

1328 + 101 26.4
 $\frac{1314}{13.21} + \frac{11.05}{71.03} 30 \frac{1}{2} \times 3$

35
158
169

01352-4927 013625-4918

-450451
10.5 12.0 m.

490211682

paper . @ dr

039

340.0
340.0
340.0

DX
paper

9.47
9.44

+0.691 30683
+0.708 78275

9.45
9.45

+0.686 29183
+0.695 7711

190
201
A. C. K. B. E. H.

234
201
L. C. K. B. E. H. (23)
234

1-5
201
A. C. K.

L. C. K. B. E. H.
234

10.10 + 53 - 14

610 1220 1 35 04 - 61 13

↑ 337.1

9.97	70.265	13.207
9.89	70.235	26.207

~~-58077~~

~~60 21 30~~

~~-52 42~~

9.82.45

1270

1 37 00

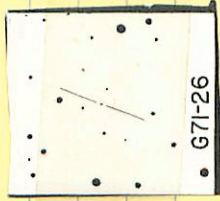
-05 05.5

125 1260

(X)

12.79 +0.117 22087

71-26 ✓ 01 38 40 -01 23 14.0 15.3 h-m



933

13.23 40.933 1 Jan 74

01408-4227 ✓ 01 42 00 -42 18.5 11.3 12.9 m

-42⁰594

• •
• •
• •

1288

π 3133

10.25 + 0.756 7625

71-24 ✓ 01 37 25 +00 30.5 11.3 12.4 hr

1272



9.5
11.0
12.4

10.42 +0.917 (Jan 29)

01484-4951 ✓ 01 49 30 -49 42.5 130 146 m

dr

①

1000

1227 +1030 8.12.75

01424-3220 ✓ 01 44 10 -32 11.5 130 14.5 mm

• δV

○

1243

\uparrow δV

δV

7.055

12.41 + 7.055 = 19.465

11.34

-2.4

10.57

Chart
#282-Search

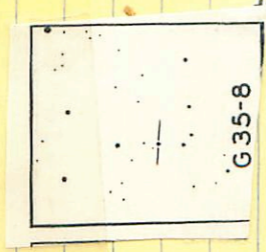
35-8

01 42 00

+27 44

10.5 H.9 R

✓



988 +0.650 20 Jan 74

3-27

01 52 08 +12 42.8 140 +15.5 mm

(+)



[Handwritten signature]

1341 +1255 1054780

159-3 ✓ 01 50 00 - 6 13

13.3 15.6 mT

⊗

1302



12.69 H.523 8th Oct 51

12.67 H.519 22 Oct 51

12.65 H.521

✓ 01503-4357 01 51 30 -43 48 12.3 14.0 mm

●
① R

1306

12.19⁺ 0.988⁻ 810.75

L-7+1098 2 03.8 -28 20 12.464

W.D.S. 17 = 0.49

(NO)

Neat 12.01 +0.70 +0.18 6 July 67
11.95 +0.705 +0.09 28 Sept 67

1098
10.89
11.39

1097 12.75 +1.53 +1.115 28 Sept 67
11.37 +1.175 28 Sept 67
11.44 +1.13 9 Oct 67
12.79 +1.52 - 9 Oct 67

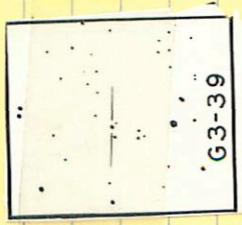
Chart

3-39 ✓ 2 03 25 +12 44

13.0 146 mm

↙ 1260

Round. wood



1239 #109/ 8/6/75

272-137 ✓
~~015-84-1036~~

01 59 45 -10 27 12.7 14.4 16.2



12.65 +1.2/8 8/14/78

-280657

62031-2819N 02 04 25 -28 1025 10.11.24
AB 58" 120

Adrian
[Signature]

9.94	10.63	+0.263	8.10.74
9.94			
9.94			
9.94			
11.45			1 Jan 74
11.45			
11.46			

✓

✓ 02069-1635 02 08 10-16 26.5

-120400

10.2 11.5 h-m

9.99 +0.718 81125

62036-3025 ✓ 02 04 55 -30 17 4.0 12.4 h-mm
-30 931

. 0

10.79 +1075 8.2015

02123-7400

02 12 35 -73 52

12.1 13.0

m

0.60

1356

+

11.52 +0.586 24 June

11.52 +0.968 10 Sept

11.52 +0.577

10.55

1.1/1

6.45

02072-1435 ✓ 02 08 35 -14 27 11.0 13.3 mm

① R

1347

10.60 +1.034 Filter 75

[11.75 10.80 10.80 10.80]

02105-1756 02 11 50 -17 47

10.5 12.2 ma

1954 W 10 15

10 11 13 14

10 11 13 14

10.18 +0.697 18 Oct 74
10.14 +0.718 22 Oct 87
10.17 +0.708

10 11 13 14