

220322

BPM 46689 11.2708 1090 21015' 17. am

218.60

GV 50 35 -23 0

(A)

9.04 + 1.27 + 1.42 (1)

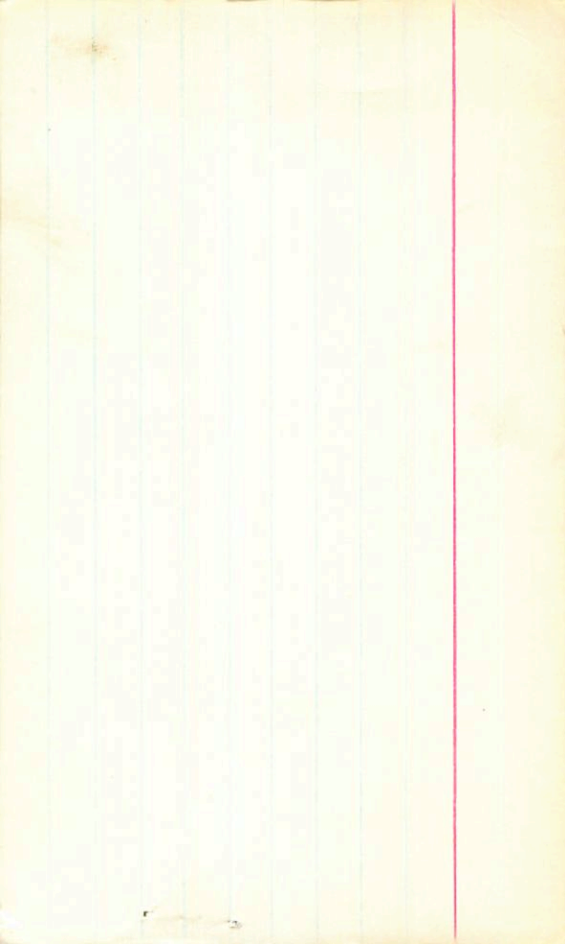
8.22 + 0.55 (2)

1159

$\rho = +16.3$ unknown

$\rightarrow 8.21 + 0.52495 \text{ Sept } 80$

11/11/80



K 582-2854

+670-230

BPM

+550-305 G

+550-295 H

49.1 -23 11

BPM 46689

H 19647

LFT 81

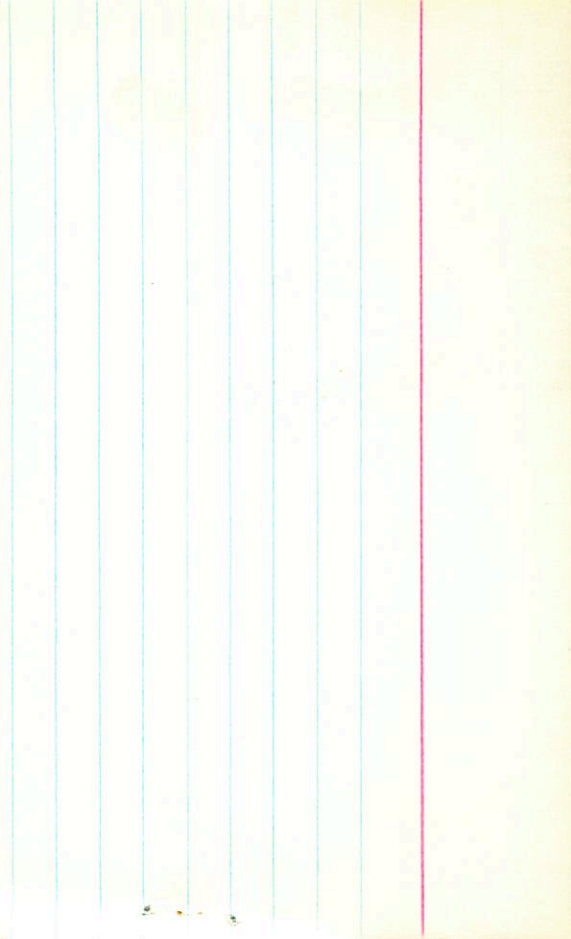
00

-280332

9.04 +1.27 +1.12 (2)

8.22 +0.55 (2)

426-170
17.2 m
17"



65-40 01 60 10 +29 55.5 13.0 14.6 m

511

+

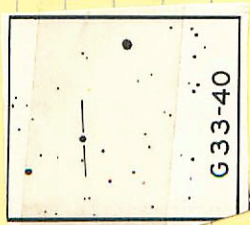


12.41 41-008 95.780

4160 120
33-40 ✓

01 07 35 +17 08.5 25 163 Mo

199



975 40.844 8.2225

G33-40

H0 6673 1 05 21 -51 10 8.83 +0.94

1193

8.43
8.48
8.45

+0.35
+0.35
+0.35

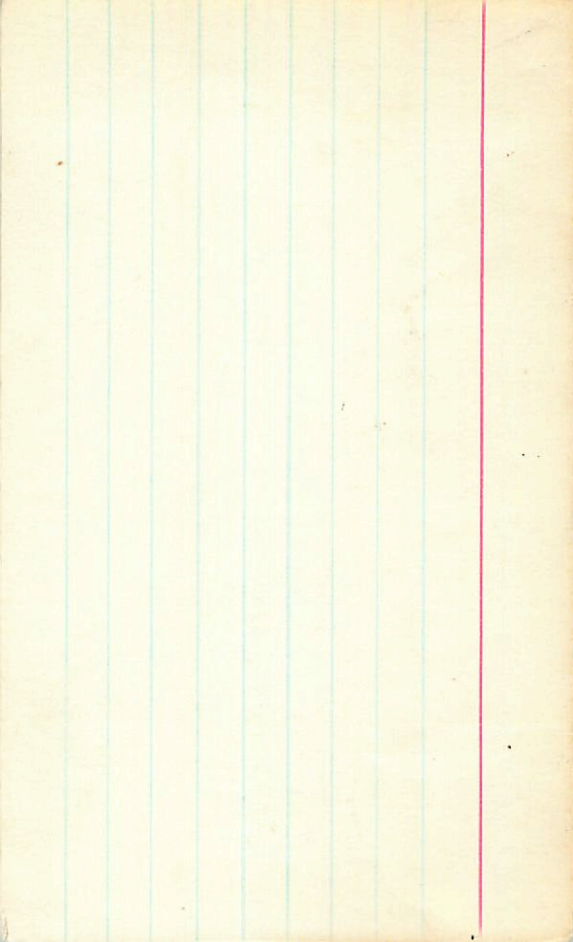
19 nov 15.68
18 nov 6.8

Cape 8.83 +0.93 +0.69

23 Oct 6.9 8.87 +0.92 +0.61

23 Nov 8.50 +0.91 +0.62

8.88 +0.915 +0.65



33-35

01 02 05

+19 59.5

113 10.8 m

1180

(A)

~~1180~~
12.5-10.2"

1R



10.13 H.0139 Septro

1.025

BPM 47033128542142

.44
.50

07

268-145 011601 -26 13 16.3 + 3

15.4 am

427-183

682/

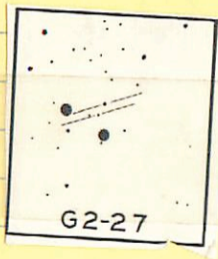
1224 (D)

1408	+0.535	1363
1401	+0.485	23
<u>1404</u>		23
	+0.51	

1389 +0.510 2157

G2-27 ✓ 01 10 50 +04 49 12.2 13.9 m

G70-44 (⊕) 146⁰ 63.4 131 15.0 m



10.37

11.51 +11.20 1 Jan 79
11.54 +11.20 8 Sep 80
11.52 +11.20

1.0

12.40 +12.48 1 Jan 79
12.41 +12.38 9 Sep 80
12.40 +12.43

33-43 01 08 20 +21 3/15 13.0 14.9 am

12/21

⊕



12.90 +1219 95/170

2016
4th

33-244

16.55 + 16.04

Level
1227

+0.11 - 0.51

13.82

(R)

mm

1393 - 0.016 30 Nov 87

320
R₂₀

01158-1209 01 17 15 -13 07 116 12.5 h-min

✓

gone II

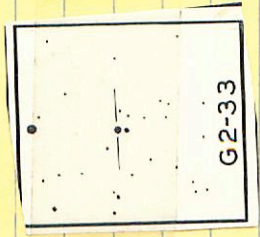
(K) (K) (K)

10.64 + 0.945 = 11.585

10.67 + 0.945 = 11.615

10.66 + 0.943 = 11.603

2-33 ✓ 01 16 50 +05 22 11.0 12.5 m



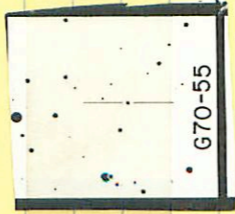
9.96 +0.800 (Jan 29)

70-55 07 21 40 +00 26¹¹ / 131 147 ^{ans}

3 (14.1 15.4 m)

(+)

du 1 RF



12.06 +1367 95.470

272-4 01 20 50 -17 3558 135 144 h

123

⊕



dp 1417 +6594 95980

269-125

1 18 0 1

-27 45

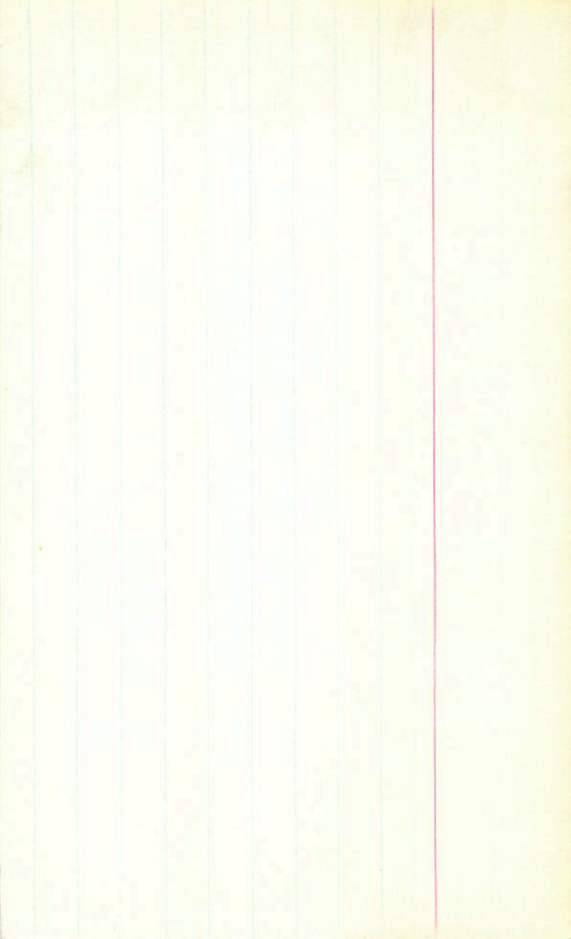
16.7 +3

.65

1221

14.3 m .63

14.11 + 0.89 4 Jan 74



✓

01222-4423 01 23 30 -44 14

-440397

11.4 .? .? .?

222

Smel

11.02 +0.818 7.8.25

11.03 +0.813 21.0.25

11.02 +0.814

(4)

15.9 + 3

✓
269-166 01 25 50

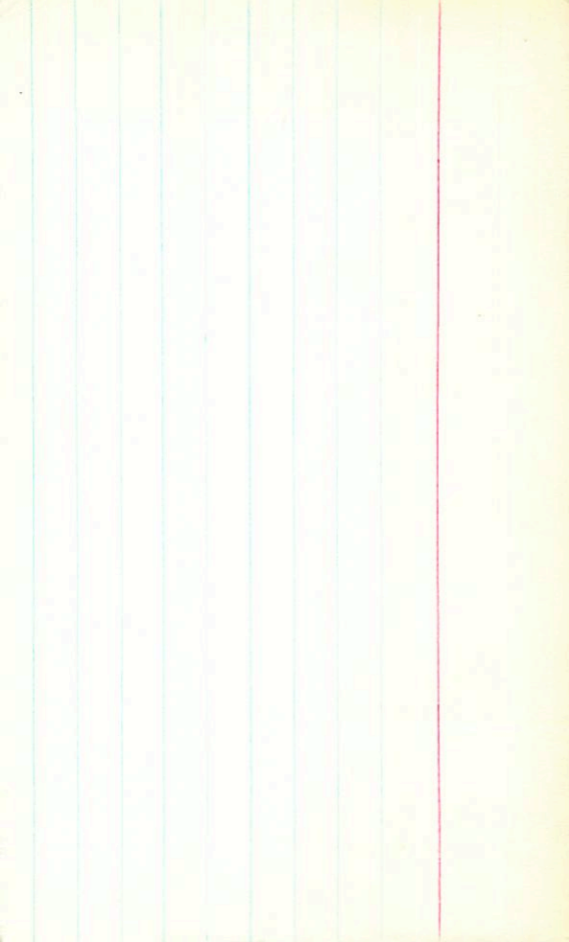
32 27

883-363

13.25 + 0.855 ²⁴⁷⁰ 74

1251

13.19 + 0.82 26.015
13.22 + 0.84



BCM 47135 15.6 580 100

6269 -161 / 24 16 -29 20 15.7 +4

473-310

15.5 n 54

1406 +1.465 +1.115 8 Aug 73

12.93 +1.03

3 Sept 73

12.74 +0.98

30 Aug 74

12.95 +1.005

1249



01303 -7386 / 3105 -73 26 13.0 14.1 -

(+)

1259

AD
Prof

Prof
15-05-7

41

12.78 +1108 85080

12.82 +1111 250000

12.79 +1122 300000
12.80 +1114 (3)

117
12.5
11

01283-0423 01 29 45 -04 13.5 129 MOh

✓

1283
0423

1318 +0.525 14.79
1323 +0.536 22.147
1320 70.530