

00035 -6121 0000 0500 -61 11.5 141 15.6^m

X ~~no star the by the~~
hand over and in

[1018] (+)

21.6
10.10

13.31 +1130 +85.80

21.6

10.1

11.6

045022 -2336

1011

A

00 03 45

-23

26.5

12.8

-144

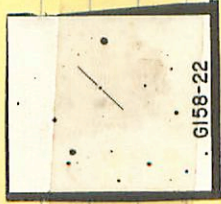
h-m

✓

12.42 + 0.96885200

158-22 00 01 33 -11 30.5 14.8 +2

✓



✓

12.03 10.924 20.819

LFT 16

N

266-55

00

07 27

-25

17

13.7+3

46047

824-364

13.6 m 539 91°

11.27 +0.64 2200⁷⁴

11.07 +0.64 1360⁷³

17 824⁷³

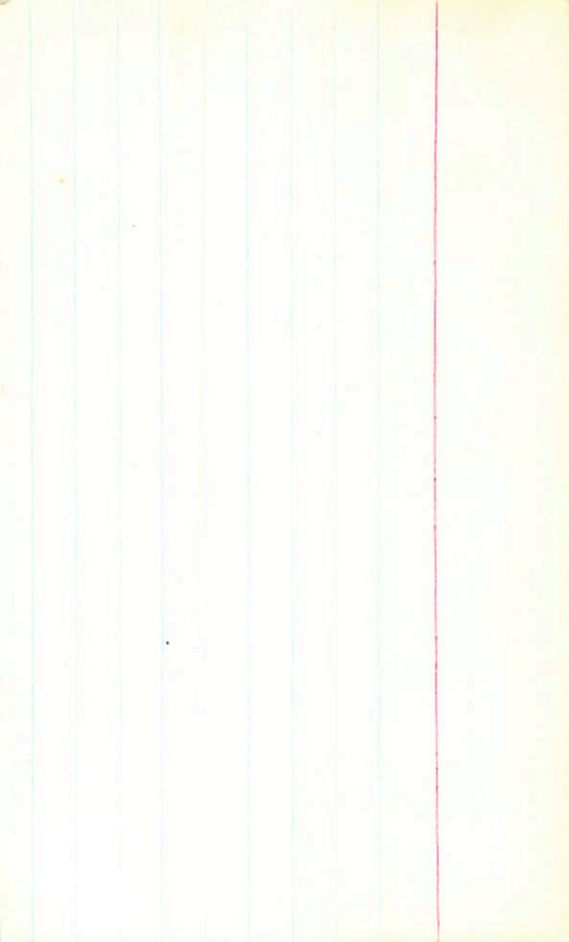
12.09 +1.385 +1.24

11.17 +0.64

1025

10.53

9.1



158-31

~~00058-1524~~

BU 07 17

-15

18.5

14.2 15.8

am

✓
A

100 M

~~13.56~~

13.56 + 0.980 210.871



G158-31

✓ 00037-6608

000508 -65-58

131 1/4 m



or

1019

10.93 +1.030 780278

~~157-07~~ 31-21

00 10 30 -05

35.5

134 15.3 m

York

(7)



12.56 + 1046 8 Sept 1970

30-45 ✓ 80 06 55 +07: 53 5 12.2 139 m

-0.96



11.84, +1032 20.20 20.20

10.61.

10.1

11.05

N -27°16 LTT 54

266-57 00 07 31 -27 17 13.7 +3

46048

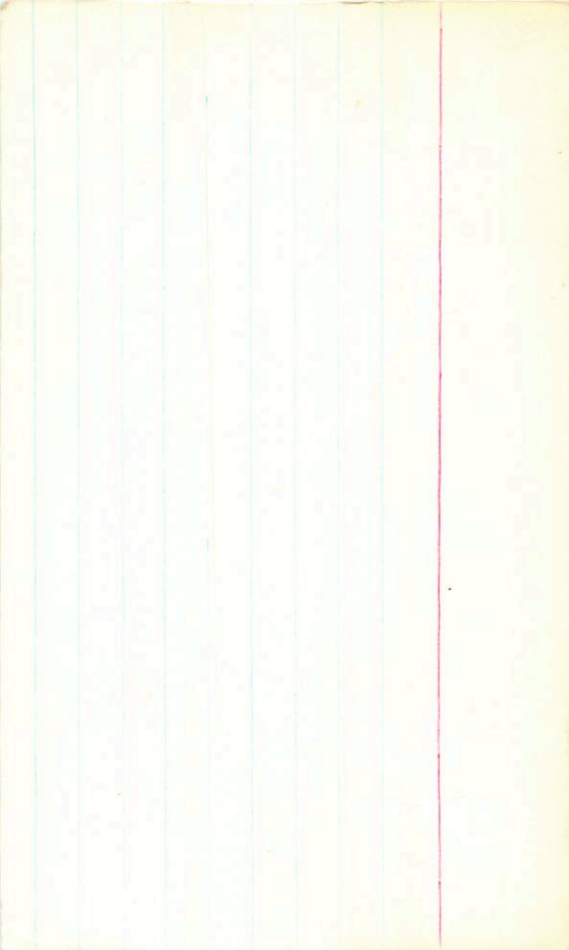
11.5 13.3 = 66582

$$\begin{array}{r} 10.74 \quad 11.73 \quad +1.445 \quad +1.13 \\ 10.8473 \quad 11.86 \quad +1.525 \quad +1.17 \\ \hline 11.80 \quad \hline 11.15 \end{array}$$

$$\begin{array}{r} 10.78 \quad +0.72 \quad 2070074 \\ 10.66 \quad +0.735 \quad 18 \text{ cent} \\ \hline 10.72 \quad +0.725 \quad (2) \end{array}$$

1620

100
925



31-39

00

15

50

+05 01

72.5 14.4 m

1052

X



12.32 ✓ +1.292 19 Aug 80

00133-6816 ✓ 00 14 40 -68 06

(11.713) mo
13.9154 mo

48"
2880

①

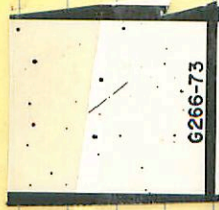
1044/51
1020
1023
6

950 +0.801 7 Dec 75
950 +0.797 8 Sept 80
950 +0.596

11.28 +1.039 2 Dec 75
11.27 +1.019 8 Sept 80
11.25 +1.025

1880

266-73 ✓ 00 13 40 -20 45.5 124 15.9 am



13.44 41.104 8.104

48015

16.6 1.50
5.96 50

1064 00 22 20 -50 5-5.5 11.5 13.0 nm

(+)

100 B 10.54 10.260 24 Ag 87

(+) 100 1000

10.20 + 1012

10.75 + 10.550 24 Ag 87

(A)

10.74 10.482 8 pm 87

0.025

10.75 10.550 24 Ag 87

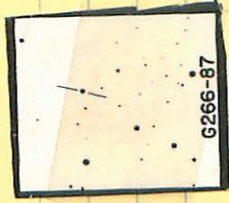
10.74 10.586

(151)

991

266-97 ✓ 50 18 10 -20 01.5 11.7 130 h-m

(+)



11.25
11.42
11.40

+0.267 7.2.75
+0.7639 Sept 80
+0.780

✓
070209 -5709

00 22 15

-50 59.5

115 130 m

-51089

4553-004 Cape Antares graph

CP#94

CS46-011

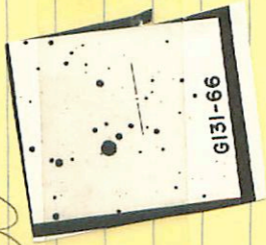
9/14
1/15
1/15

10.70

41.0125 20.15

131-66 00 24 15 +22 46.5 13.0 15.0 mm

(1070) X



13.73 +1289 29h 50

00 22.2 -2726 00 23 40 -27 15.5 17.4 14.0 m

(1070)

begin

~~TR 0.25~~

again

1000

(+)

1302 +1.769 95.780
1310 +1.769 105.780
1306 1.769

(15.70)

11.25 11 26

75
+10.5

130-68 00 23 25 +29 55 134 15.1 nm

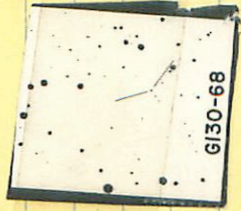
106 R₆ (X)

12.53 +1.378 19 Aug 10

11.55 12.40 71.90

11.5

10.4



Apur

765-18 00

2.5 0.0

-19 25.5
-19 29

6/17/79
14015.8

(+)

~~29~~

~~29~~

1075

15.11 7157 - 200279

14.17	+0.504	95.980
14.16	+0.493	235.979
<hr/>		+0.498
14.16		

46294

~~22~~

~~23~~

~~23~~

~~23~~

~~25~~

10-0 117

251

158-86/97

00

27

55

-9

41

"

13.7

15.3

mm

17.4

15.9

mm



GI58-86,87

1086/7

~~1788~~ 1323 +0.433 19 Aug 80

(B)

(A) 13.06 +1.814 8 Dec 78
13.10 +0.758 19 Aug 80
13.08 +0.806