

7 16 55 -46 57

8.3-8.3 NO

orbit

-46° 30' 46

7 16.2 -46 54

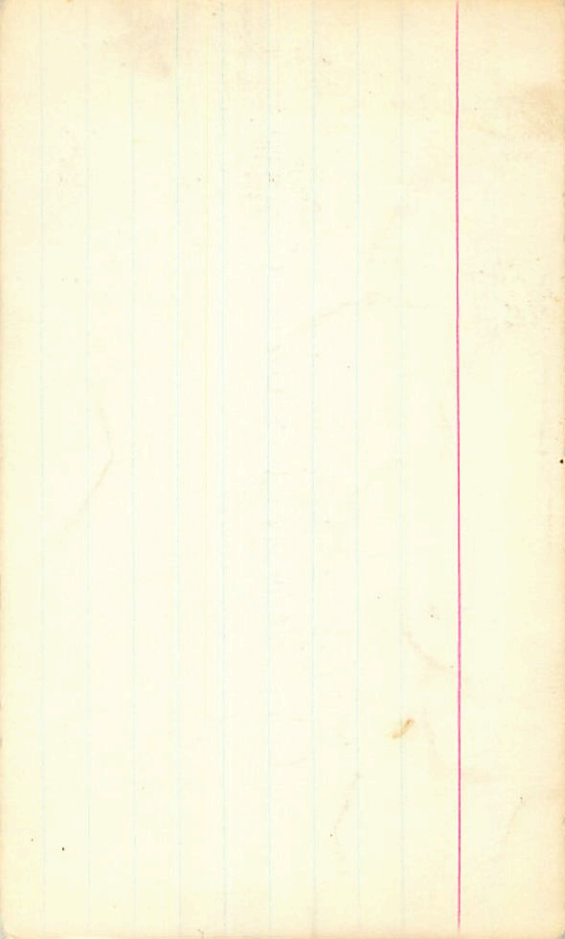
← when is daylight?

6.72 +0.98 +0.70 17 Dec 66

6.72 +0.94 +0.63 8 Dec 66 40"

6.76 +0.95 +0.66 10 "

6.73 +0.96 +0.67



1908 ~~12 48~~ - 63 19

L + T 2774 ~~1204~~ 118 N 50.66

63 07 136 PD ~~240 535~~ 835 3340

9.13 + 1.245 + 1.20 24240 70 8.30 + 0.53 30000

9.15 + 1.225 + 1.14 24000 70 832 + 0.525 31000

9.14 + 1.235 + 1.15 837 40.53

115

(+)

1908

20.3 54.1 (3) August 835 40.50 13 days

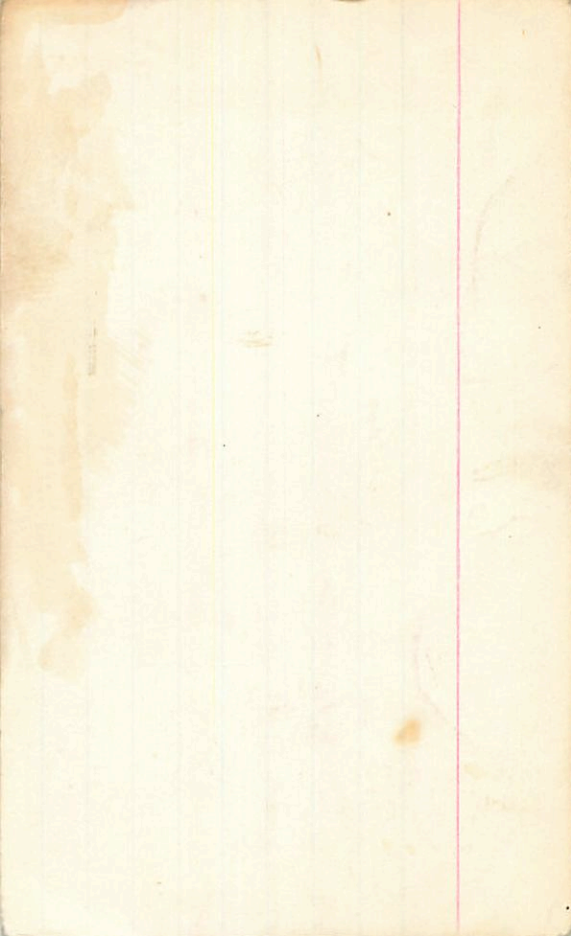
9.05 + 7 1373 592 29 June

9.08 + 4 1377 577 31 June

9.06 + 6 1375 595

8.34 + 0.492 = 8.832

8.34 + 0.497 = 8.837



~~Handwritten scribble~~

✓

1190

7 06 05

92 65 -

3271

~~Handwritten scribble~~

023-2

05 = 185

Handwritten scribble

U-34756

96896

N

Q

F

~~Handwritten scribbles~~

955-353 1724 157076

955-353 1727-541 17

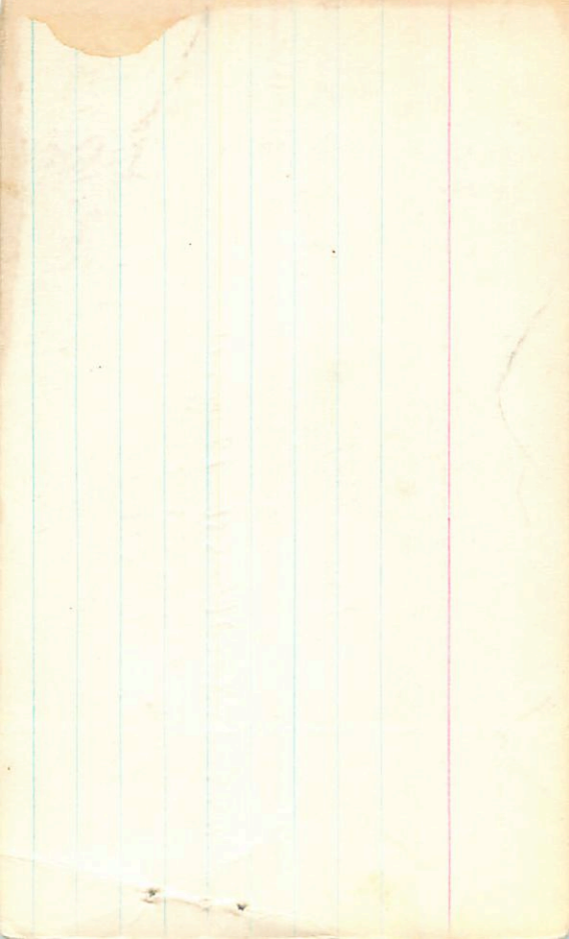
955-353 1726-556

pid

Handwritten scribbles

Handwritten scribbles

2.100



p =  $\frac{1054}{106}$  }  
172

✓  
-8701633

7 ~~05~~ 54 -57 26  
05  
276  
750

LTT2774

9.20 +0.185 ②

~~MR~~

068

9.52 +0.44 -0.17

27 Nov 70  
9.00 +0.18

9.55 -353 826 -550 15 Nov 76

9.55 -352 827 -561 17 Nov 76

9.57 -355 823 -582<sup>rs</sup> 3 Jan 76

9.59 -347 822 -585<sup>rs</sup> 4 Jan 76

9.59 -352 824

9.41 +0.19 29 Nov 70  
9.34 +0.20 13 Dec 76

9.36 +0.19 ③

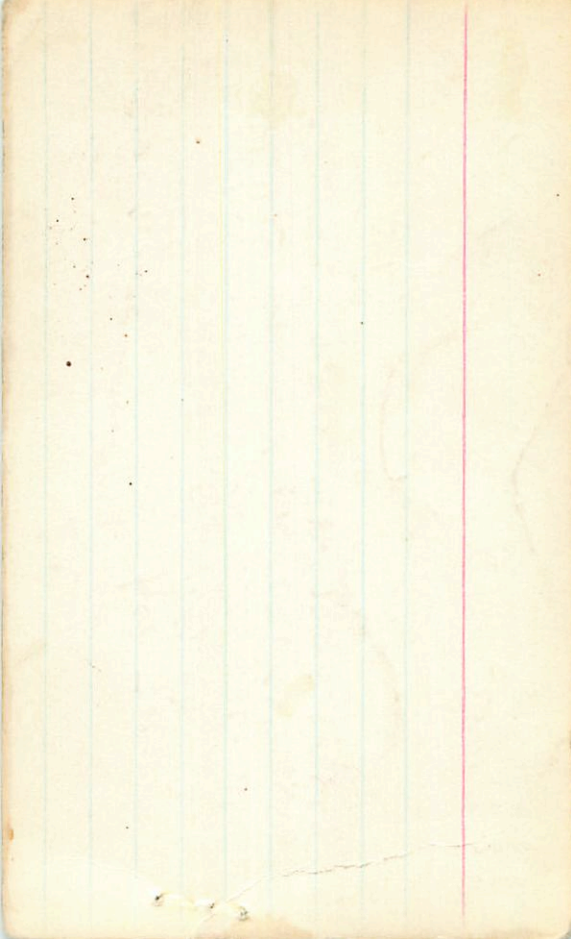
9.36 +0.199 24 Jan 80

9.34 +0.18 25

9.35 +0.191 ②

+355 +101 +363 ✓

2.112 ②





1 more BT

See other pack

LFT 523

7 20 10 -15 19

11.4 F4

Handwritten scribbles

0.56 1440

1913

⊕ ⊕ ⊕

9.76 +0.73 +0.17 247070

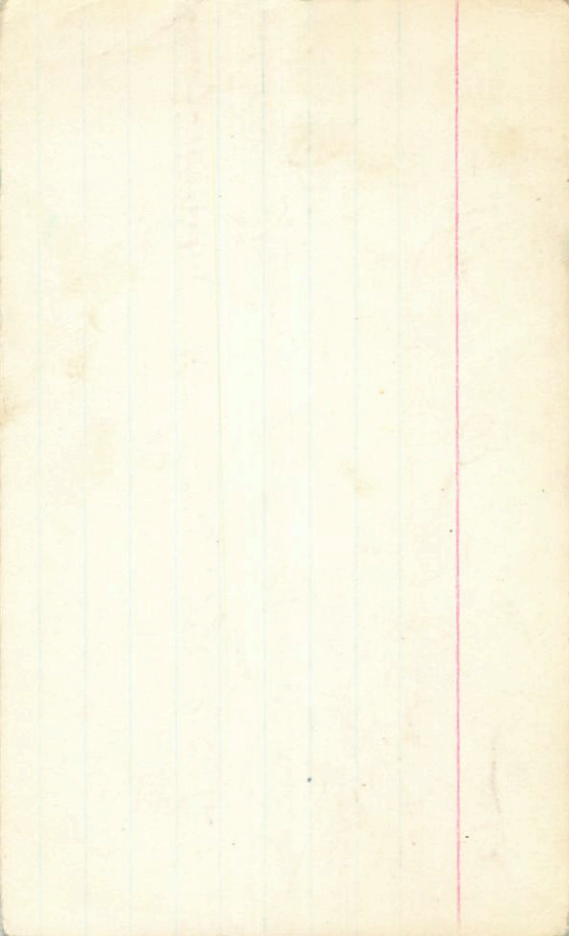
Do R2

9.47

9.47 +0.286 224878  
9.48 +0.259 84454  
9.53 +0.265 124452

9.57 -276 948 -592 / 8 pm 8 /  
9.88 -267 965 -561 20 pm 8 /  
9.80 -252 964 -543 2.02 21 pm 8 /  
9.80 -250 965 -546 2.10 2

9.56 +0.28 27622  
(9.47) +0.28531 pm 22  
9.50 +0.28



4403484

~~07 3004~~

b

07292-4418

07 30 05 -44 22

11.5 12.1

Check card de

60<sup>11</sup>

11.35 - 307 903 - 410 02824

7.6 142  
44.3

11.35 - 301 888 - 408 18.0

11.35 - 304 895 - 409

+

405 165 502

(60<sup>11</sup>)

~~2019~~ 11.12

+0.200 5274

1922

11.13

+0.227 10952

(R R)

11.12

+0.214 2

(60<sup>11</sup>)

✓  
-450320  
CSA

Abro (uav) (RET)

10.47+61 -02.05

7 33 45 -45 14

(1929)

(AV) ✓ 5

(RT) X

10.56 -343 902-588 11mar76

10.65 -310 904-535 10mar76

10.60 -313 839-615 17mar76

10.58 -316 947-612.2.097 2dec80 60"

10.57 -319 850-472.088 29Nov80 36"

10.58 -316 845-615 2.093

3920.122 289 2.558 (3)

232

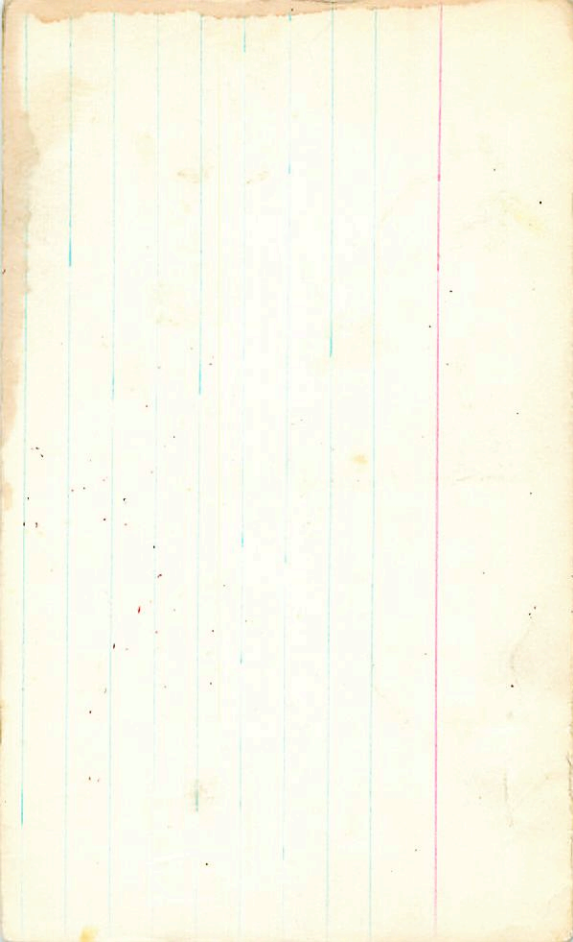
→ 10.37 +0.226 2dec81

10.45 +0.235 16Apr76

10.24 +0.255 12Apr76

10.39 +0.23 18Apr76

10.40 +0.23fr



07 325 -10 16 ✓

07 33 50 -10 20

11.11 -295 966 -616  
11.14 -336 903 -617

1430

~~11.11 -335 903 -619~~

*1 more* 11.12 -325 990 -617

R ⊗

990 10.93 +0.254  
10.91 +0.248

11.10 -248 992 -639 2.091 25.844 10.72 +0.265

11.14 -336 903 -617 10.82 +0.256

11.11 -295 966 -616 11.743

11.12 -310 884 -624

⊕



51219

4 55

30

+1 11.5  
+1 10.2

7.7 6.5

1881

✓  
2 + 10

742-282 942-479 24Nov  
241-274 936-726 "SE 77K-466 25"  
742-274 936-726  
742-274 936-726 →

✓  
✓  
✓

7.15 +0.235 24Nov  
7.19 +0.23 30Nov  
7.17 +0.23

9.47 +0.223 6Dec 20  
9.48 +0.218  
9.48 +0.220

7.16 +0.220



67458

8 06 36

-29 20.5 6.84

$$6.83 + 6.58 + 0.5$$

$$6.84 + 6.0 + 0.2 = 1RS$$

$$\frac{6.80 + 0.59 + 0.015}{3} = 2.27$$

$$6.82 + 0.54 + 0.03 \text{ (3)}$$

(F) (F)

1512

6.81 - 326 887 - 512 2.126 27 Nov 80

6.80 332 842 - 455 2.125 27 " "

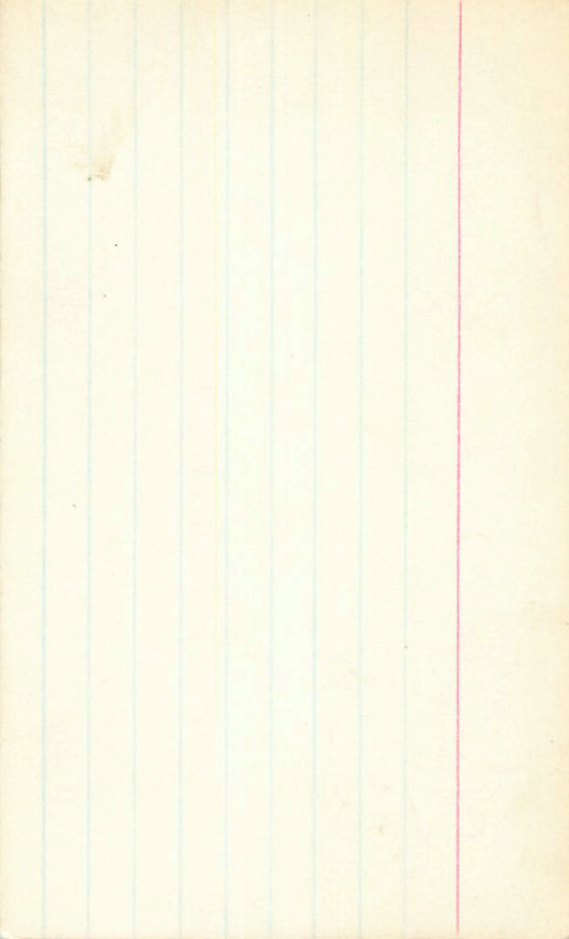
6.80 332 886 - 504 2.126

6.74 =  $r_c$  6.20 cap

6.55 + 0.20 29 Nov 71

~~6.75 6.27 6.27~~

6.78 6.54 + 0.215 (4)



40-2 ✓ 07 58 20 20 545- 545+58+100

⊗ 267 -232 1053 -454 30110008

766 -227 1050 -459 222179  
516 230 1052 -456 ⊗

1960

483

482

734 +0.271 52679

⊗

731 +0.267 272288

732 +0.269

300 ✓ ✓ W630

7.21 + 0.32 (R)

73667 ✓ 8 38 28 +11 37 7.9 & 113

(1) ↑ max 72 39

1 + 1 (R) (X)

761 -214 1026 -504 16.9 (R)

(X)

756 -211 +1031 -509 13.2 (R) 76

759 -215 1034 -453 15.2 (R) 76

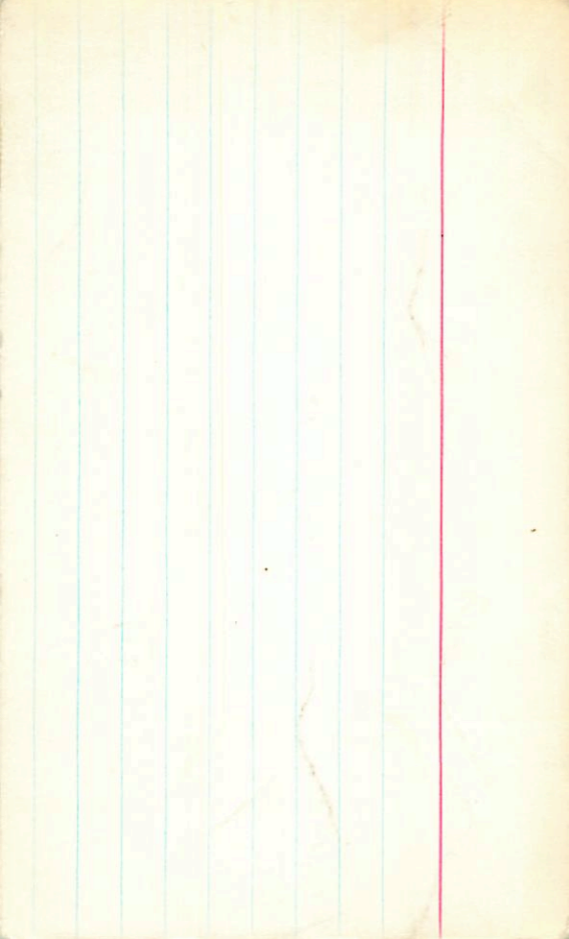
762 -212 1049 -533 26.2 (R) 76

762 -230 1024 -450 2 (R) 76

760 -214 1029 -501 (R) 7.20 + 0.20 (R) 14.4 (R)

7.60 495 ~~296~~ 397 1947

7.26 + 0.24 (R) 7.20  
7.20 + 0.20 (R) 7.20



-1502546 ✓ 08 39 55 -16 16 9.5 10.0 FS

09 385 -16 10

FS? 500

2036

⊗ 1 ⊗

S

9.54 +102 1373 - 162179

No

9.28

+0.470 2200081

9.27

+0.465 57678

9.58 388 780 543 2.131

9.69 396 790 550 2.139

9.68 397 785 546 2.136

9.52 +0.176 2800081

100

199 min

⊗  
⊗

9-13

68

38

40

+11

36

27

88

60

✓

2022

Q

2,617.82 + 46

7.60 -214 1030 -500

3197.617

7.60 -214 1026 -504 19,2493

7.59 -216 1027 -499 30,000.57

7.60 -218 1025 -495 29,900.52

7.60 -215 1027 -500 6

7.21 +0.306 202479

Q

~~7.17 +0.322 202479~~

7.19 +0.314

46-5

08 49 20. 707 4B

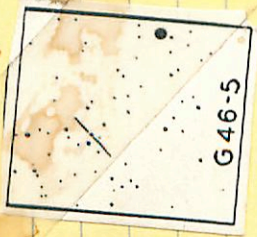
11.5 12.1 9

✓

2056

IR

60"



12283

11.27 - 249 919 - 628  
 11.26 - 232 - 921 - 650 21/4  
 11.26 - 240 520 - 629

(+) (A)

~~12065 - 4638 - 20679~~

70

10.91 + 0.292 9 June 81  
 10.91 + 0.264 1 June 81  
 10.91 + 0.243

W





X Andiamo ✓

8 499 03 - 5 24

6-11-19

8 479 - 5 21

20.4

75530

9.19 + 0.73 + 0.215

8.94 + 0.275

9035

9.20-289 932-524

112453

9.22-272 939-510

105493

9.14-257 934-510

112076

9.23-240 931-466-975

142420

9.20-226 1011 928-510

142676

9.21-268 934-510

142676

RV ✓ 887 + 0.26 1900