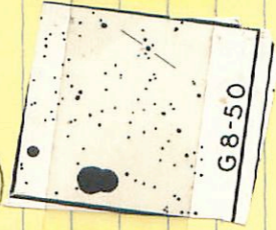


8-50 ✓ 04 40 05 +22 52.5 12.5 13.6 10

(1695 X)

12.59 110 1239 103 20 Jan 75

60"



12.13 10.407 12 Jan 75

12.05 10.418 8 Jan 75
12.10 10.412 (2)

✓✓

RT also

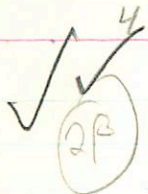
9.22 + 41 - 28

210607

13

13 05 + 22 17

9-16



1mm

E

2.135 9/10/75

2.135 9/10/75

9.23 - 382 790

9.21 - 376 + 792

9.18 - 392 + 797

9.21 - 383 790

- 54

- 513

- 546⁶³

- 556

2.135

1300/75

1400/75

2.135

9.06 + 0.177 2.4 per 50

9.03 + 0.168 19/10/75

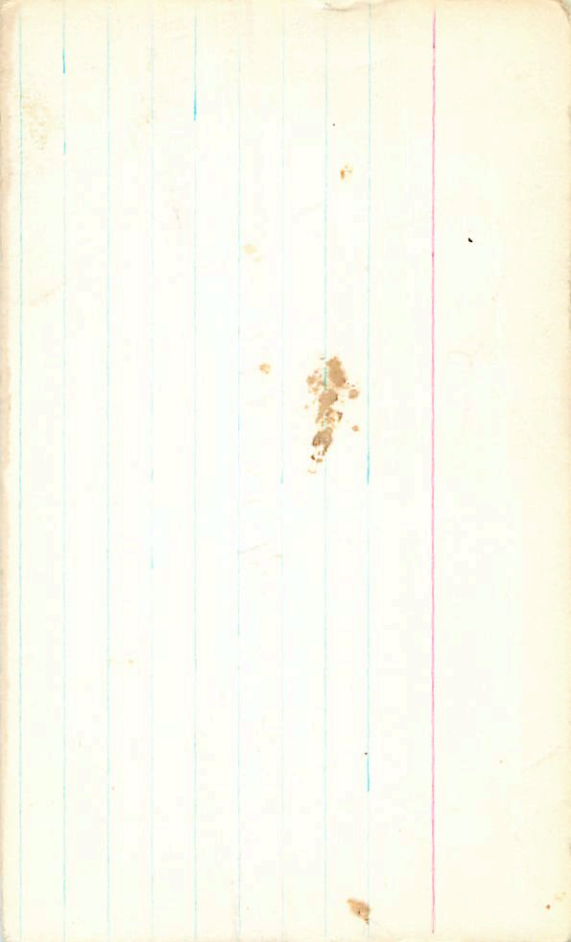
9.11 + 0.190 30/10/75

9.13 + 0.195 25/10/75

9.11 + 0.202 6/11/75

~~9.13 + 0.195~~ (3)

* 9.20 + 321 077 303 (2)



83-46 ✓ 04 55 30 44 53.5 11.9 13.0 p

X X X

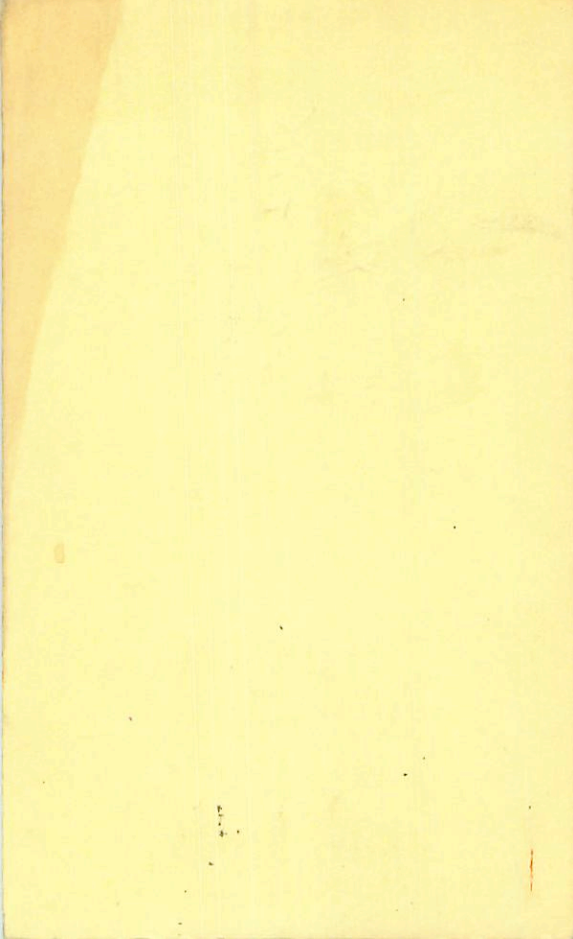
(114)

12.45 - 120 934 + 630 20 Jan 52
~~12.46 - 142 950 - 228679~~
~~12.48 - 122 951 649 21 Jan 52~~
12.46 - 121 945 - 640 (3)

11.93 + 0365 8 Jan 52

(X)
12.02 + 0396 12 Jan 52
11.98 + 0350 (2)





30501

259-296

1096-406

12th St

258-200

1088-443

4th St

264-154

1051-489

3rd St

270-288

1098-472

2

Handwritten signature

3277 (X) (R)

5 0 54 (FR)

75-56 07 704462

Feb

~~704-304 876-561~~ 2.110 26 Aug 50
704-323 886-555 2.111 23 Nov 50
704-316 899-558 2.112

32778

5 01 54 -56 07 / 20462

(12/12)

+

FS "X" FS

(10.6-11.36)

(6.81 +0.245)

[9.13 51.6] AS 14 TO 20

+0.221 20120

Age: 250

9.71

08106 20 20180

h.051350

5

01

30

-56

07

10.42

+136

7.1662

A

7.04

+0.62

-0.07

17

H03277A

9.63 -10.60 ~~29~~ 29

~~9.50~~ +0.58 28

9.72 ~~+0.54~~ 29 "

9.67 +0.59

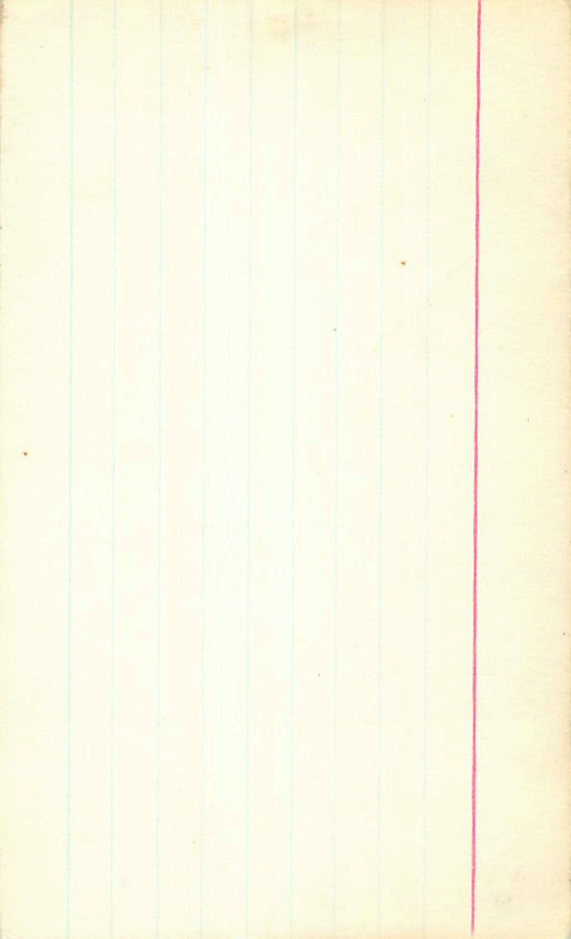
$Q = +0.1$

See log

book

A 6.64 +0.35 29 out 20

250 hrs



1724
LDS 135 LTT 2158/9

HD 32778 5 1.4 ~~1.6~~ 11
~~-56 08~~

7.01 +0.63 +0.03 Capen

7.04 +0.62 -0.07 17 mar 67 78⁹ } 7.06 +0.63 +0.4 Capen

7.06 +0.63 +0.04 BS 55 } 11.4

7.02 +0.63 +0.05 Capen

7.14 +0.62 -0.03 10 mar 67

7.17 +0.65 -0.02 9 mar 67

7.05 +0.625 -0.04 8 Dec

7.10 +0.63 -0.04⁵ (4)
10.62 +1.36 +1.14 (2)

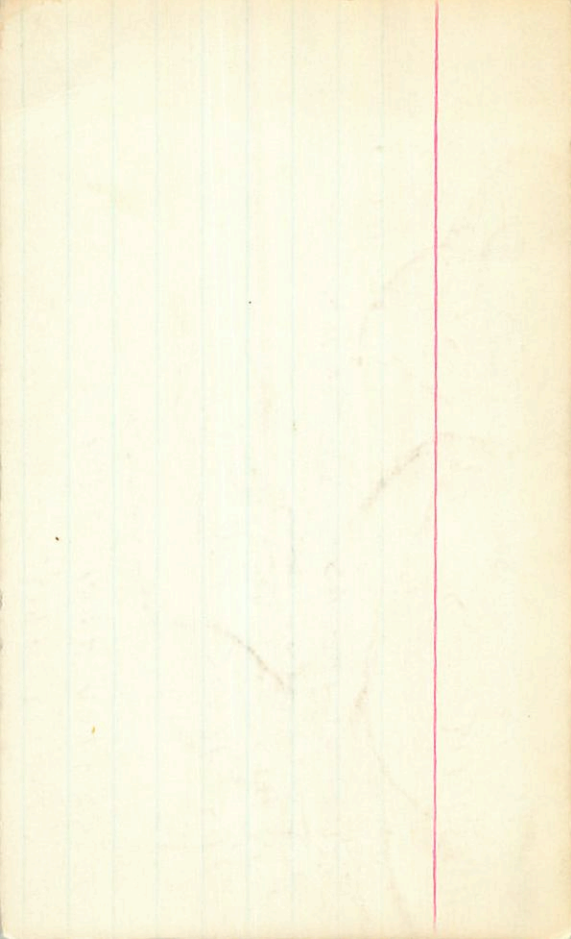
7.12 +0.63 -0.04 (3)

10.72 +1.34 (+1.15 / +1.08) 9 mar 67

10.52 +1.36 +1.64 8 Dec 64

10.49 +1.36 (+1.23) 10 mar 67

10.57 +1.38 +1.63 10 Dec 64 / 10.62 +1.36 +1.14 (4)



11 00 1 284

4033725 05 1415 -09 08 8.03 10.79

(1744) (1772) +0.264 27 Nov 81

7.80	+0.24
7.81	+0.28
7.75	+0.265
7.79	+0.261
	270

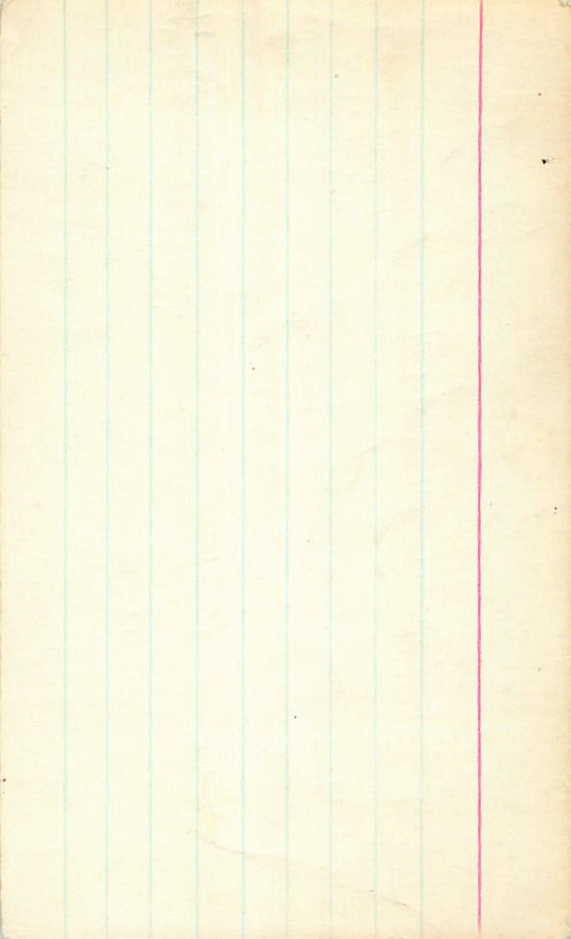
19 Nov 68
 18 Dec 68
 27 Dec 70

8.05 10.74 10.38⁶⁴
 8.04 10.77 10.385⁶⁴
 8.04 10.78 10.385⁶⁴

8.08 -244 1012 -482 3 Nov 81
 8.05 -240 1013 -492 13 Nov 81
 8.06 -242 1012 -487

(1771) 770 +0.260 27 Nov 81
 772 +0.264 27 Nov 81
 771 262

050



05327-2330



1.20 - .46

05 33 55 - 23 28.5

8.4 9.4 10.3

-230 2865

.042

769



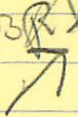
Perzemon

25.4 ± 7.2 (2)

292
273

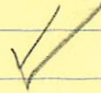
(3) low

1.9



w630

1 more of each



8.90 - 197 1151 - 724

8.74 - 180 1123 - 504 2174

8.81 - 191 1150 - 514 6824

8.90 - 190 1150 - 510 (3)

8.37 + 0.330 5474

8.37 + 0.336 14.274

8.37 + 0.333

17 2874

G-94-43 LFT 439

7.02

1359.0 62-12

35715

5 53

240 + 2

09 88+10

1741

8.83 + 1.01 40.845 9 Mar 74

~~8.44~~ 40.36 6 Mar 74
~~8.44~~ 40.39 7 Mar 74
~~8.44~~ 40.375

(FP)

(X)

(H)

8.83 - 137 1243 - 511 ²⁵⁰⁰ 81
 8.84 - 185 1245 - 500 26
 8.84 - 185 1244 - 510 0

8.83

437 Cape

174

more

✓
✓
✓
38014
41085

40
14
558
14
558

1771
1776
42-650

8.56 + 0.86 + 0.50

822 + 0.305

13.21 + 1.47 + 0.74

1194 + 1.511

1112 - 448 25th

1111 - 453 9 Apr 77

1136 - 466 10 Apr 77

1 RT
✓

151
151
151
151

8.52 - 198 + 1117 - 475 - 242

8.51 - 151 + 1105 - 501 + 25

8.52 - 198 - 1111 - 482

8.52 - 151 - 966 - 558



G99-26,27

14038014
W 3543

58.17⁴¹ +0.292⁽³⁾ 27 Dec 74 8.57 + 89

8.14 +0.305 22 Dec 74
8.15 +0.29 12m or 20

G 99-26/27

8.33 +0.305 16 Feb 74 12.03 + 1.06 21 Dec 74

27) 150²²
55" N

8.22 +0.31 15 " "

8.22 +0.30⁽³⁾
+0.305⁽⁴⁾

12.00 + 1.082 27 Dec 74

1321
1321
1203
11.93
11.94
11.94

+1.47 +0.24 23 Dec 74
+1.05 21 Dec 74
+1.055 22 Dec 74
+1.065 30 Dec 74
+1.06

8.57 +0.86 +0.53 17 Nov
8.56 +0.86 +0.64 21 Nov
8.56 +0.86 +0.58

99-24 V 05 41 05 +07 24 10.8 11.9 R

(576)

(X)

10.80 - 10.5 1215 - 604 2^{pas} 1824
10.79 - 10.5 1213 - 526 75
10.80 - 10.5 1214 - 590 (2)

X



10.23 +0.393 52474
10.25 +0.419 224671
10.24 +0.406 (2)

06 521-5305 06 52 45 -53 07 12.2 13.7m

Right position $\frac{10}{11}$

(1877)

Again

Check position X

$11.37 + 0.8808 \text{ Jun 81}$
 $11.42 + 0.8662 \text{ Jul 81}$
 $11.40 + 0.8722$

170

160" 12.43 + 247 1107 - 232179 (12.05 + 0.430 5479)

1250

H050281 06 51 20

05 08 68 d/m

6.60 + 0.50 + 0.50

6.01 + 0.38

5.81 + 0.365

6.05 + 0.405

+ 0.385

6.01 + 0.38 N(5) ←

4.01 + 0.38 N(2)

10.11. 71.495 + 1.255 + 0.93 (K(2))

8.48 + 93 cp.

Payor

6.56 - 18 1223 - 532 - 24 24 24

6.55 - 115 1224 - 537 26 "

6.54 - 116 1224 - 537 26 "

21 Nov 68

17 Dec 68

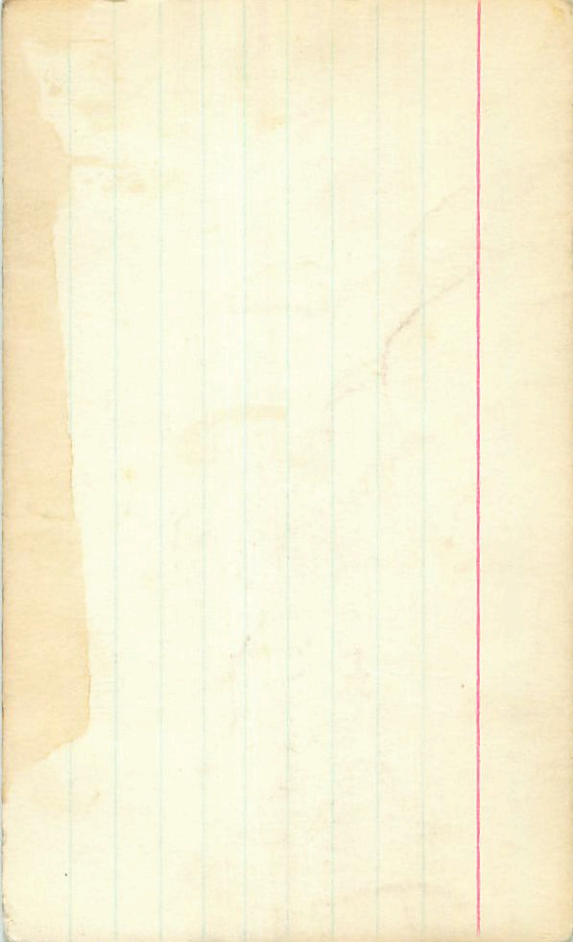
+ 0.395 64

399

7.43 + 0.984 22 Dec 68

8.48 + 0.961 20 Dec 68

8.96 + 0.973 (2)



W 0487 B

6 49.9 -5 07

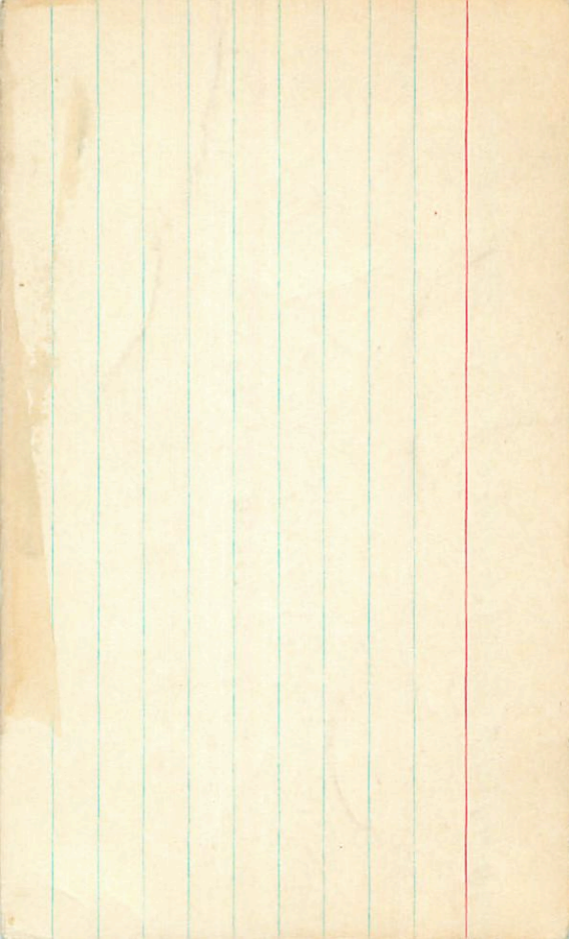
14050281 B

59"

1975 1174

10.15 +1.49 +1.25 1 man 45 100"

10.08 +1.50 +1.26 2 " "



108-48 ✓ 07 00 30 +06 27 12.4 13166

(131)

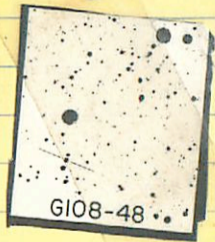
(X)

Var?

2 cr

11.88	-241	916	-601	182179
11.87	-242	904	-610	4 Jan 82
<u>11.88</u>	<u>-242</u>	<u>910</u>	<u>-605</u>	(2)

more ✓
red



or (11.52) +0302 52179
 11.53 +0.330 17m 79
4316

cash (1200)

7.42 + 555 = 03

51929 ✓ 6 55 30-56 5515 ✓

~~Handwritten scribble~~

~~Handwritten scribble~~
2B ✓

R = 722

R = 215

NSJ

745	-331	849	-474	3 Jun 76
744	-327	949	-470	4 Jun 76
<u>741</u>	<u>-329</u>	<u>949</u>	<u>-472</u>	

+0.228 Bm 76

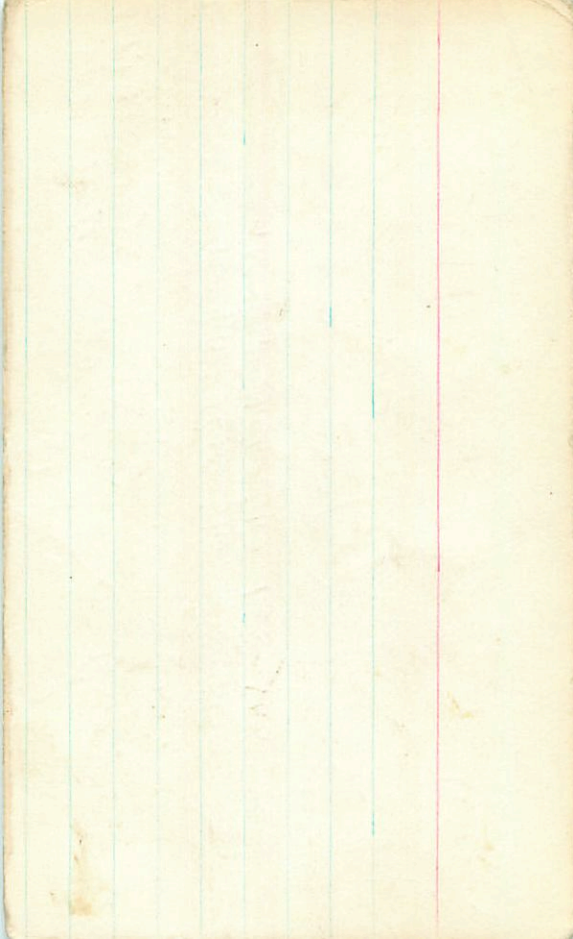
7.22 + 0.215 = 2

7.25 + 0.213 = 1478

7.25 + 0.212 = 3

2555 ✓

2.123	5 Jun 80
<u>2.126</u>	9 Jun 80
2.124	



50924 6 55 21 -56 545 7462

$$7.43 + 59 - 05 \text{ BS}$$

$$7.40 + 58 (-02.5) \text{ C}$$

$$\underline{7.42 + 585 - 03}$$

7.40 373 148 287 2.583 Allow

$$12^6 392$$

$$7.25 + 0.205 \text{ }^{25} 126$$

$$7.17 + 0.21 \text{ }^{23} 71$$

$$7.26 + 0.22 \text{ }^{27} 217$$

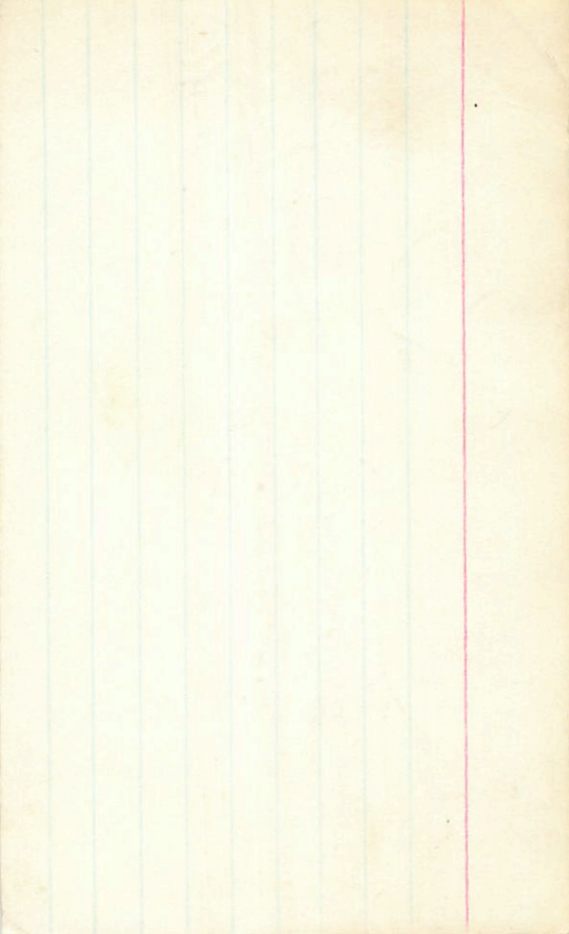
$$\underline{7.22} + 0.215$$

$$7.23 + 0.210 \text{ (3)}$$

$$7.26 + 0.220 \text{ }^{13} \text{ Mon}$$

$$7.25 + 0.205 \text{ }^{17} 1075$$

$$\underline{7.24} + 0.210 \text{ }^{27} 217$$



-5701633 ¹¹³⁹ ✓

07 06 05 -57 26.5 10.7 11.2 ⁵⁻⁸

07056 -57 24

6th unit

9.58-352 824-550

(+) (X) (O)

X

1896

Opt unit up

346 147 524

1 next

11.44 +0.173 52/7

11.63 -359 872-388 2.166. ^{60"} 11 Dec 80

11.65 -362 871-389 2.170 211

11.64 -360 872-388 2.165

→ 11.64 346 147 524 2.1645 (2)

-1201871

07

14 55

-18

07

26

8.3

6.2

07136-1258

HO STARS OUT

(+B)

more in wall

X

0191

7.74-326 878

7.74-326 878

7.74-326 878

7.74-326 878

7.74-326 878

7.74-326 878

7.77-322 874

7.77-322 874

7.77-322 874

7.77-322 874

7.77-322 874

7.77-322 874

7.77-322 874

7.77-322 874

7.77-325 823

7.77-325 823

7.77-325 823

7.77-325 823

7.77-325 823

7.77-325 823

7.77-325 823

7.77-325 823

7.77-325 823

7.77-325 823

7.77-325 823

7.77-325 823

7.77-325 823

7.77-325 823

7.77-325 823

7.77-325 823

7.77-325 823

7.77-325 823

7.77-325 823

7.77-325 823

7.77-325 823

7.77-325 823

7.77-325 823

7.77-325 823

7.77-325 823

7.77-325 823

7.77-325 823

7.77-325 823

7.77-325 823

7.77-325 823

7.77-325 823

7.77-325 823

7.77-325 823

7.77-325 823

7.77-325 823

7.77-325 823

7.77-325 823

7.77-325 823

7.77-325 823

7.77-325 823

7.77-325 823

7.77-325 823

7.77-325 823

7.77-325 823

7.77-325 823

7.77-325 823

7.77-325 823

7.77-325 823

7.54 7.22 7.54

7.54 7.22 7.54

7.54 7.22 7.54

(X)

(R)

let

HD 57095 07 16 36 -46 56 6.69 0.99

19.77 (7D)

6.69 -160 1158 -525 16240
 6.68 -161 1158 -524 16240
 6.67 -160 1158 -524 16240
 $\Sigma m = 0.8$

6.02 +0.375 21 Dec 68
 6.27 +0.34 24 Dec 68
 6.28 +0.35 30 Dec 68
 6.28 +0.345

10 Dec 66 6.76 +0.95 +0.66
 1 Dec " 6.72 +0.94 +0.63
 14 Dec 66 6.72 +0.98 +0.76
 3 Dec 69 6.74 +0.95 +0.67
 6.75 +0.955 +0.66

540 5 + 3366 322
 1000 322

