

✓

905076

22 37 15 +10 21

9.52+77+31
9.24+24

667-8

RP ✓

~~RP~~

9.25 + 0.27 12/17
9.25 + 0.26 19/18
9.25 + 0.26 5

9.52 - 250 977 - 502 23/17
9.49 - 248 982 - 494 21/17
9.50 - 249 980 - 495

463 247 410

... ↓

67-8 ✓ 22 8730 +10 26

~~1905076 22 8730 +10 26~~ 11.0 dno

^{24.15}
+0.25 15 Aug 74
+0.25 26 Nov 70
+0.23 27 Nov 70
+0.245 (3)

9.20
9.27
9.21
9.23

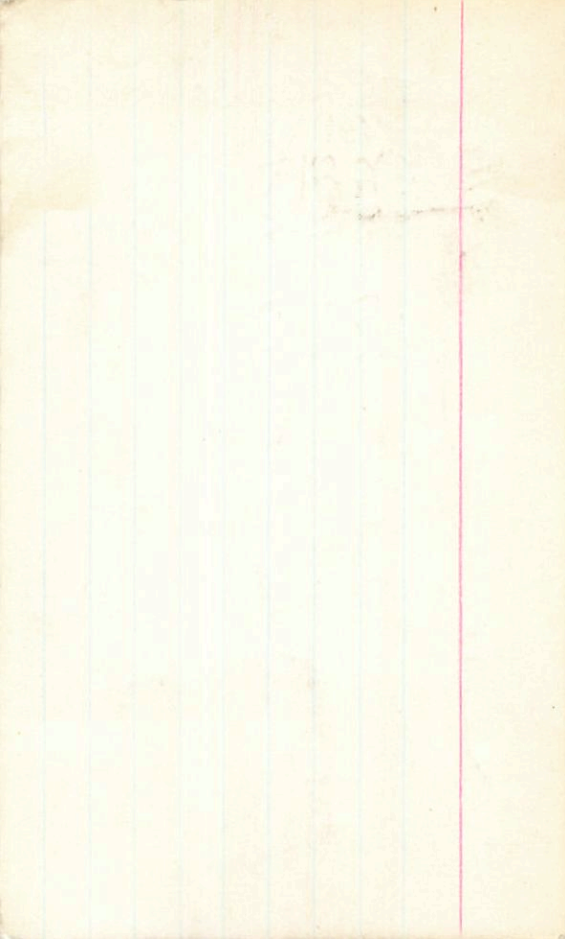
3838

288 845 542 882

9.52 +77 +31511



9.51 -256 991 -488 952 +87
9.52 -256 991 -494 552 +87
9.52 -256 991 -491 (2)
9.50 -249 980 -491 -491 (3) MSO



8697

22

51

~~88~~

#09

47

5.16 + 48

LHS 3864 4

2 + 3 (7) (7)

+3.6

5.18	-393	871	-412	2.162	2 July 0
<u>5.15</u>	-393	<u>877</u>	-425	2.169	18 July 0
5.16	-393	<u>874</u>	-419	2.166	⊗

311

149

442

2645

⊗ 279

430

170

✓ 67-30 22 51 45 +17 15

131 140 g-12

~~3867~~ ? (13.63-117 938-447 220581)



12.78 +0.407 151239

12.73 +0.484 220581

12.75 +0.481

387415 ✓ ✓

+ W D G P

8.00 162 + 08

7.73 + 0.235 5

216777 22 54 48 -7 56 16

8.03 -305 906 -539 11 Dec 74 96

8.00 297 864 -481 5 Dec 76 109 26

8.03 -317 907 -524 7 " " 96

8.03 -326 905 -508 12 " " 96

8.05 -315 912 -539 2.11.04 SE 781

8.05 -309 914 -533 2.11.2-588 871

8.02 -297 848 -543 2.11.5 19 Oct 87

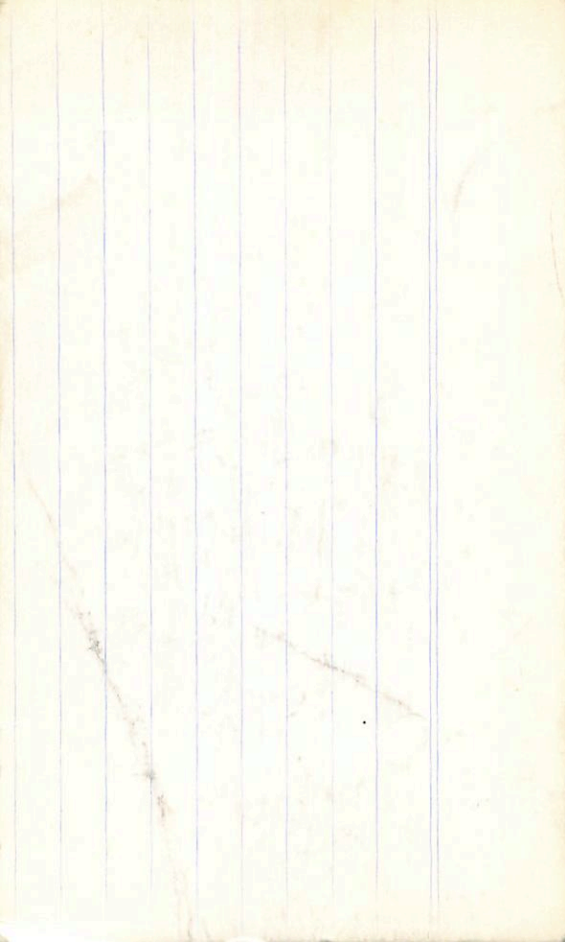
8.03 -311 907 -531 2.11.2 6

$I_c = 2.29 \times 10^4 + 220 \text{ kg}$

(R) (R)

+0.229 5 Oct 87
+0.220 22 Oct 87

7.78
7.76



28-41 23 08 05 - 02 22

180

218 566 23 07 26 - 265 8.62 + 1.02

+0.375 29 May 70
+0.335 24 July 69
+0.345 1 July 69
+0.325 25 " 8

+0.345 (4)

+0.335 5 Oct 87
+0.321 20 Aug 74

+0.335 24 July 69
+0.321 25 July 69
+0.345 1 July 69

8.10 +0.331 (4)

8.60 + 0.15 - (2)

8.09
8.00

8.10

7.44

8.02

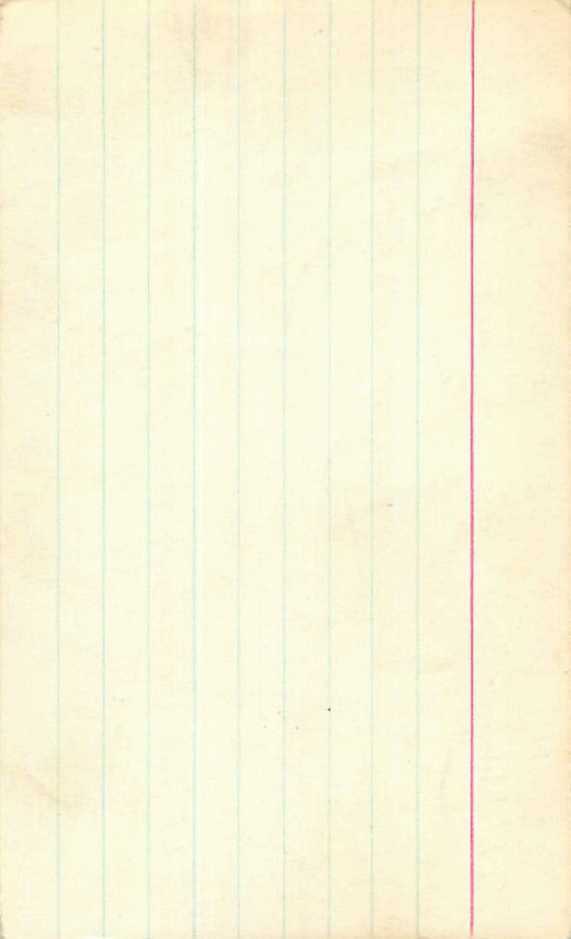
(4) 8.14
8.14

(+) (3907)

8.01-131 1267-52545875-
8.01-121 12521 1521-17.8

8.01-130 1261-704 (2)

7.10
8.10



-02

14533 23 06.6 ~~02~~ ~~32~~ 8.3 dms

218566

8.62 + 102 (2.14) 2F

8900/

Oct 29 8.58 | -085 + 1.575 | +98 +97

Dec 26 8.54 | |

854 +99 +1.00

854 +98 +99

8.61

8.62
8.60

1011 +93 4X

1011 - 2

219175

23 12 54 -09 03

8.0.F.S

RR ✓

(RFA)

616px 25-11

8.7.62

2143 Start 4
2140 6 " "

6 cent 79

7.55 -357 864 -515

29 July 58 ✓

7.58 -348 858 -509

7 Aug 58 ✓

7.58 -354 870 -521

2.142

7.56 -353 866 -515

7.38

7.56 -0.322 142 393 2.617 → 139

7.34

8.23 -248 916 -538 2.127 6 cent 78

7.42

8.23 -242 920 -518 29 July 78

7.92

8.22 -246 908 -536 7 Aug 78

7.92

8.23 -292 912 -542 2.127

7.92

8.23 0.417 184 365 2.555 ③

+0.182 -19 Aug 78

+0.190 85px 78

+0.182

257

7.92 +0.287 19 Aug 78

7.92 +0.287 85px 78

7.92 +0.262

$$+ 0.8 I_J = 0.8 R_J - 0.5 - (R - I)_{R_2}$$

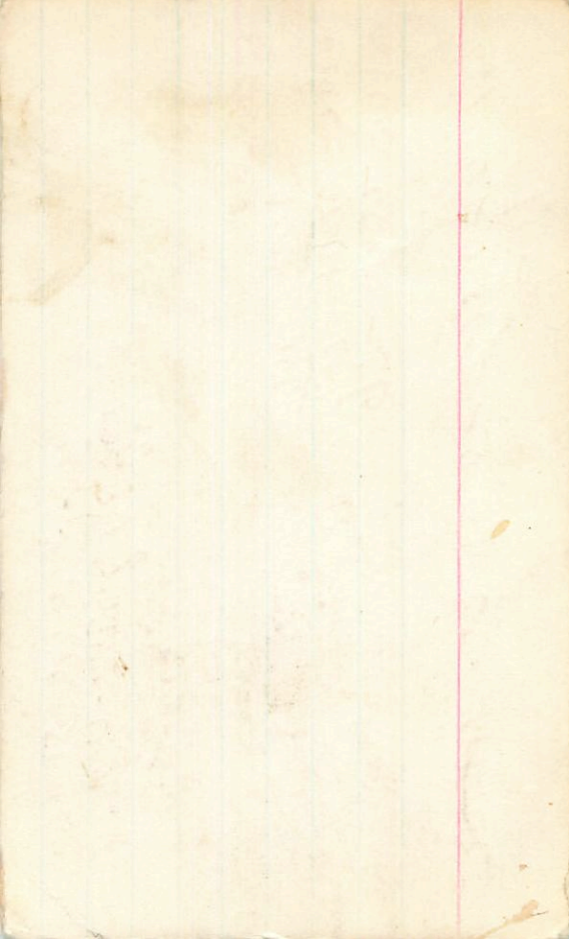
$$I_J = R_J - 0.6 - 1.25 (R - I)$$

$$= R_J - 0.44 - 1.25 (R - I)$$

$$= R_{R_2} - 0.44 - 1.25 (R_{R_2} + 1.25 I_{R_2})$$

$$= -0.25 R_{R_2} + 1.25 I_{R_2} - 0.44$$

$$= I_{R_2} - 0.25 (R - I)_{R_2} - 0.44$$



3556
23323-3819 23 35 55-35 09

3556

TR

1007

1007

(X) (I) (T)

12.07
11.11
11.09
12.07

141
308
304
322
396

986-450
877-441
515-412
888-450

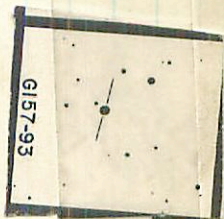
1173
1177
1175

1007
1003
10.220

1007

1007
1003
10.220

G157-93



FHS 35212 ✓

(X) X

495/509

215509

23

15

12

05.5

8.69

+1.06

(23142-6711)

23

16

05

-67

01.5

9.00

+1.14

8.75

+1.06

+0.96

2 July 69

8.05

+0.40

26 July 69

8.72

+1.03

+0.96

17 " "

7.94

+0.38

25

8.73

+1.05

+0.96

FIR D

8.00

+0.39

8.20 +0.26 (3) ←

←

1950

8.22

+0.360

19 Dec 79

9.07

+1.12

+1.05

2 July 69

8.28

+0.43

26 July

9.00

+1.11

+1.07

17 " "

8.27

+0.415

25

9.04

+1.15

+1.06

8.25

+0.40

9 Oct 69

8.16 +0.402 (3)

(BWN)

8.47

+0.37

19 Dec 79

8.67	-109	1274	-505	18 Oct 84
8.69	-111	1291	-520	18 Aug 83
8.70	-104	1276	-500	35 Sept 83
<u>8.68</u>	<u>-108</u>	<u>1281</u>	<u>-508</u>	(3)

9.00	-61	1320	-541	18 Oct 84
9.03	-66	1336	-563	18 Aug 83
<u>9.03</u>	<u>-64</u>	<u>1326</u>	<u>-556</u>	
<u>9.02</u>	<u>-64</u>	<u>1327</u>	<u>-558</u>	(3)

✓ 23 22 00 -10 52.5 40

220339 ~~23 21 20 -10 58 8.0 d112~~

23205-1103 10.57

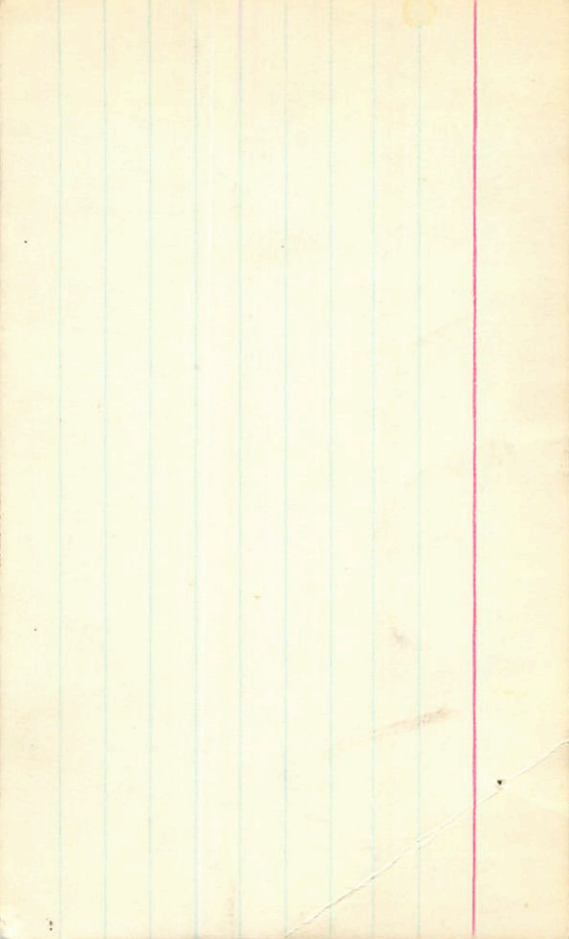
7.90 10.89

DC = 6.54
+ 322 Cape
231

3939
20

7.30	+0.31	24 Aug 69
7.40	+0.325	1 Aug 69
<u>7.20</u>	+0.305	25 Aug 69
7.44	+0.308	20 Aug 69
7.40	+0.312	4

7.83	-208	1104	-519	45877
7.84	-202	1100	-517	55877
7.84	-205	1102	-515	



14669

23	22.00	-10	52.5
23	20.5	-11	03

80 dir 2

220339

~~7.80~~ ~~433.~~

7.80 789 +57 5K

HS 8439 (2 IR)

Oct 26	7.83	-195	+1.615	(Copy)
29	7.81	-23	+1.65	

24-72 23 49 05 +02 47

8.41725 123
58

4020

8.07 +0.234 96123
8.10 +0.240 61279
8.05 +0.235 80123
8.07 +0.236 6

8.31 -254 974 -450 45181
8.27 -257 984 -434 55181
8.34 -256 979 -445 2

✓ show 23 53 55 +28 30

227085

23 53 55 max 7.2-7.5 11/12

max R (4044)

7.47 -92 1073 -500 7 Sept 78

7.43 -67 (998) -419 11 Aug 78

7.53 -95 1078 -515 12 Aug 78

7.43 -76 1095 -546 R 04:40 15 Sept 78

7.41 -66 1060 -479 20 Sept 78

7.48 -79 1078 -510

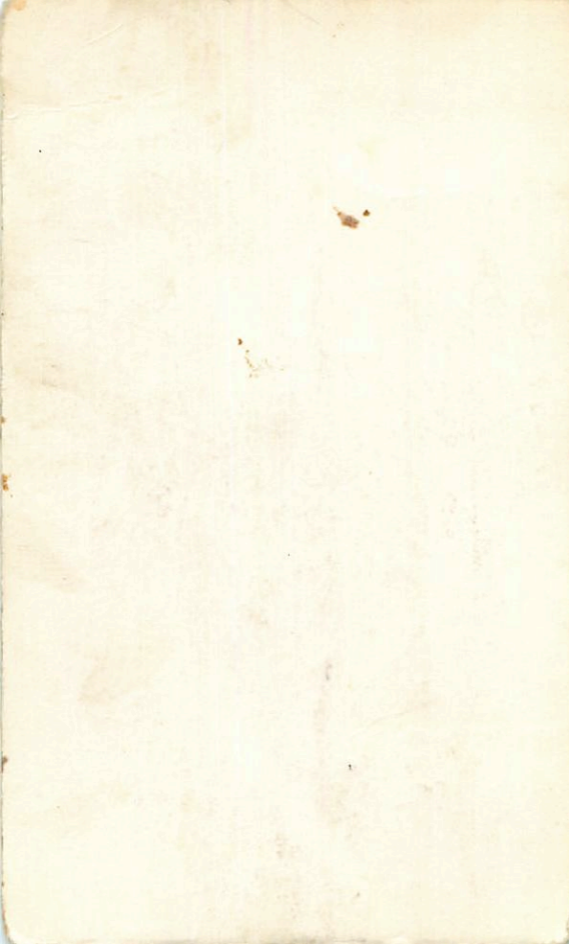
650 337 419

7.00 +0.462 14 Aug 78

7.02 +0.468 18 Aug 78

7.01 +0.465

show



266-8 ✓ 23 55 10 -26 32.5

PerkinElmer
hand

11.2 12.5 hr



LS 4048 X

186

11.01 +0.250 50x81
 11.05 +0.245 19 Nov 79
 $\frac{+0.245}{11.04}$ 22 Sept 79
 11.34 -274 18 Sept 81
 11.31 -282 -560 25 Sept 81

12 Nov 79

11.32 -273 919 -573
 $\frac{11.32 -278}{11.32 -278}$ 355
~~918 -572~~
 355

(7)

✓ ✓ ~~Adm~~ R-I = +0.26 7.51 +0.74

4055
23 58 JK -20 10:5

954 485
944 -50.4

224 156
248 257

980 -442 155476

943 943
954 -564

748 -256
744 -270

947 -479

746 -273

944 -484

746 -273

6 Sep 76 7.20 +0.234 5679
14 Sep 76 7.17 +0.285 2.20.87
11.15

~~947~~

15.0

