

-30015026

17 57 35 -30 10

44094

~~17 56 47~~

~~20 09~~ 9.33 + 80

[17556-3010]

9.33 10.82 + 0.31 7 Jun 69

9.36 + 0.78 + 0.32 12 Jun 69 9.03

9.34 + 0.80 + 0.315

9.36 - 0.79 + 0.34 3 Aug

31.

+ 0.41 4 May 69

+ 0.305 30 Jun 69

+ 0.30 6 July

+ 0.305

9.00

9.00

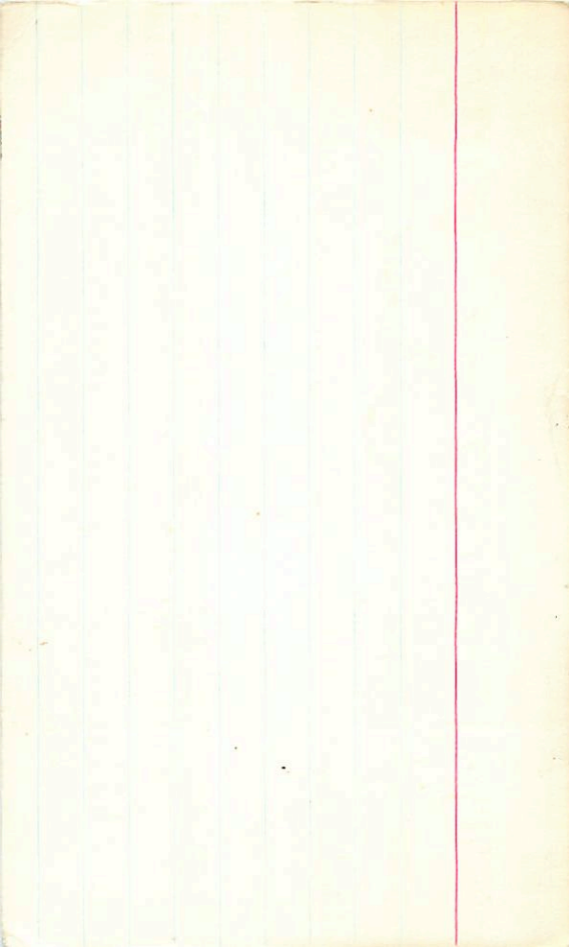
10.282 15 Jun 74

8.99 + 0.302 25 Jun 74

9.99 + 0.302 (3)

3347

✓



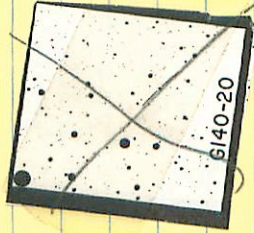
140-29 ✓ 17 59 30 714 43

✕ 3336

9.1 10.1 f-k

9.24-264891-540^{2311h}₂₃

9.09 70.230 20 July 29





3344

140384

17 59 30 73 + 14 43

924-264 891-547 2304 24

927-276 894-522 2304 24

924-288 897-514 2304 24

924-290 906-508 2304 24

(HR)

140-271

252

244

269-271

140-271

904 +0.230 204 74

897 +0.258 95 80

895 +0.264 10 11

898 +0.261

HR

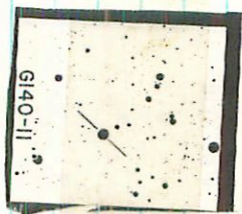
602
 161845
 17
 46
 29
 40
 29
 45
 85
 2 + 85
 852 + 85
 8.51 + 31 0-5

G-110-1

3325

854-220 1027-497 15Ryd
 888-215 1201 51E-88.8
 892-258 1009-450 230Apr76
 1201 1201 21Apr76
 1201 1201 230Apr76
 1201 1201 230Apr76
 1201 1201 230Apr76

(A)
 (B)



G140-II

+403509
161848

140-11

3329

17 46.55 +0.57 8.52+88

~~8.54 +0.325 1 APR 70
+0.275 30 APR 70~~

~~8.50 +0.295 30 JUN 69
8.56 +0.305 1 JULY 69~~

8.51 +0.31

~~8.56 +0.261 15 JUN 79~~

~~8.50 +0.295 30 JUN 69
8.54 +0.275 30 APR 70~~

8.53 +0.275 (3)

B-141-719 2 IB each (8) 7.86 + 70 + 19

3397 RR (X) 18 25.05 + 8 37.6 8.1 90.65

3397 RR (X) 18 25.20 + 8 36.5 8.6 9.565

786 - 285 939 - 501

27 Aug 80

(261)

7.86 - 278 934 - 475

15 July 79

7.86 - 280 936 - 493

7.58 + 0.253 19 Aug 80
7.61 + 0.257 19 Aug 80
7.55 + 0.249 9 Sept 80

430 206 415

(33) (329)

8.32 - 237 991 - 496

15 July 79

7.58 + 0.2543 (3)

830 - 250 998 - 515

27 Aug 80

8.10 + 0.253 9 Sept 80

831 - 244 994 - 505 (2)

8.05 + 0.257 19 Aug 79

8.03 + 0.266 19 Aug 80
8.03 + 0.259 (3)

164822

164889

18402 4006 06^{no} 19 42 10 -40 04.5

✓ CPD 40 ✓ 42^{no} ✓ 42^{no}

043-50^{no} 500 0.17 9.5 11.8 125

043-50^{no} 500 0.17
043-50^{no} 500 0.17
043-50^{no} 500 0.17

✱

✱ 1011 + 105 ✱

✓ 19^{no} 4006 ✓ 19^{no} 4006

6cmf 51 005.04 946 946 + 10.400 15 Jun 79

10.04 -116 1258 -555 15 Jun 79
10.03 117 1250 -555 7 Jul 83
10.04 116 1254 -555 @

Agri ✓

also (RI)

10.08 + 70 + 09 (3)

230409

18 59 39 + 19 02.5

2728

(11)

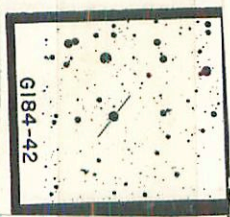
6-18442

713

10.10	-270	-284	-45	-25	54	25
10.12	-282	-494	-577			
10.12	-261	-484	-50			
10.11	-271	-490	-543			

10.11 + 445 + 172 + 240 (3)

9.96 + 0275 21/Jan 77
 10.07 + 0.255 28 Oct 77
 10.00 + 0.265 (2)



G184-42

-240-705 66

662624
K099279
489144

16 02 24 - 20 29
19 01 0 - 20 32



58500E-
N N

569618H

~~569618H~~
569618H

12 000' 21
22M

569618H 1752X

X

✓
177095

ADNORV RI

9.6.1+66

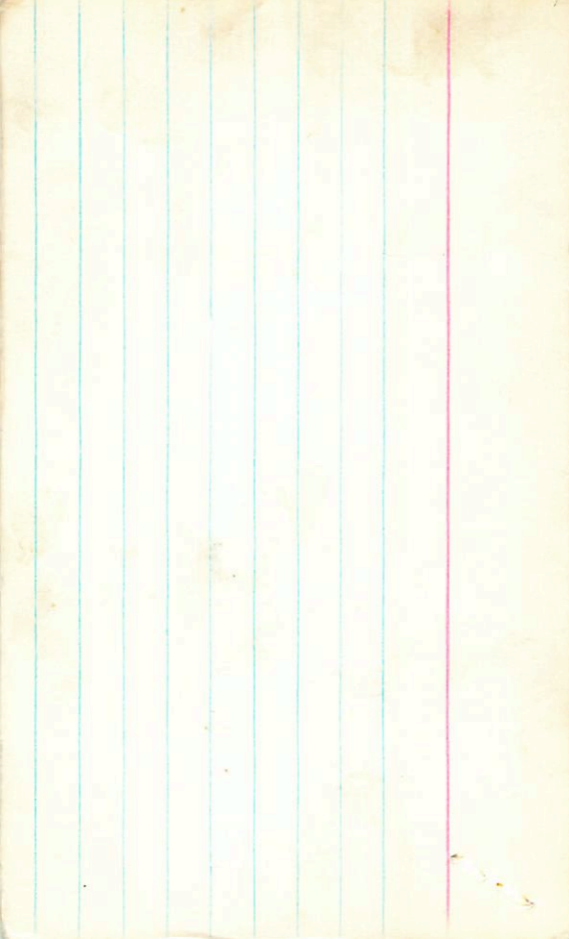
19 02 29 -20 30

(342)

9.6.6 +0.60 +0.025 29 Oct 75
 9.6.3 -251 8778 -55228885 54793
 9.6.5 -287 878 -550 23 June 76
 9.6.3 -302 +856 -475 -511 13 Oct 75
 9.6.4 -283 +884 -440 -544 14 Oct 75
 9.6.4 -250 +884 -550 (2) 20 Nov 75

✓ 9.6.4 +416 147 379 (2)

9.45 -11265 175 Oct 75
 9.40 +0.27 18 Oct 75
 9.46 +0.555 28 Oct 75
 9.47 +0.263 (2)



~~179626~~

CHO 2000

PT

✓

9.16 + 54

3444

19 12 04 - 00

345

6 2220

96

DK

923-359 830-537 24 Jun 74

924-341 833-580 23 Jun 74

923-358 845-518 10 Oct 75

~~920-338 884-467~~

924-254 880-535 21 Aug 70

903 + 0.22 - 18 Sept 74

909 + 0.15 - 4 Sept 74

909 + 0.25 - 6 Sept 74

906 + 0.22

11000

DK

DK



G22-20

1400-6004

179626 (2)

9.24 -352 822-535 2.119 12 Jan 87
 9.23 -336 810-547 2.118 15 Jan 87
 9.23 -354 930-537 24 Jan 76
 9.24 -341 833-580 23 Jan 76
 9.23 -358 845-553 13 Oct 75
 9.23 -350 928 2.115 5 July

9.04 +0.217 19 July 87
 9.04 2.1213 19 July 87
 9.04 2.1204
 9.04 2.1215

590305

46.2 - 59.18

→ (11)

-040 - 576 400 ± C

19462 - 59.18

19 49 00

- 59

13.5

0.55 82.0

LEFT HAND

19 49 00

- 59 14

12.0

- 56 - 550 67
- 160 - 584

RIGHT

→

(9.08) 6.12

12.0 12.4 g

Sp

π 00

pro

13.36 + 0.73 + 0.30 9 10 66 40"

25th July

13.52 + 0.71 + 0.30 9 10 66 40"

13.45 + 0.72 + 0.25 (2)

11-5-716

13.23

10.246 17.274

10.246 17.274

□

670-5508335

3491

19

49

05

-59

13

9.084
+0.61

(X)

9.06-217 1075-453 23 Aug 50

9.10-225 1034-484 12 Aug 50

9.09-222 1035-464 2.077 2 Aug 50

9.18-222 1028-482

446 394 427

(PS)

RR

8.72

+0.297 2 Aug 50

8.71

+0.302 19 Aug 50

8.70

+0.312 5 Sep 50

8.70

+0.304

LET 1495 19466-5918155-77651

209-502
-5917205

(349)

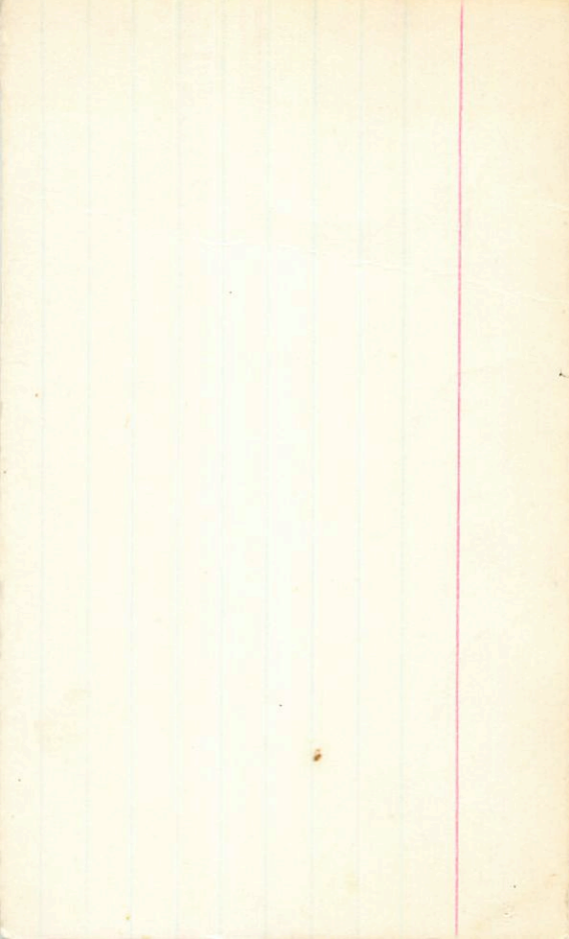
4680.1
031(u)

~~874-1032580270~~

36
54
5.45

9.14 10805+039 770070

873+029721475



~~20014~~ 19589-5011 | 20 01 05 - 50 06.5
 189484 1959 58 50 07.5 8.33 +1.13

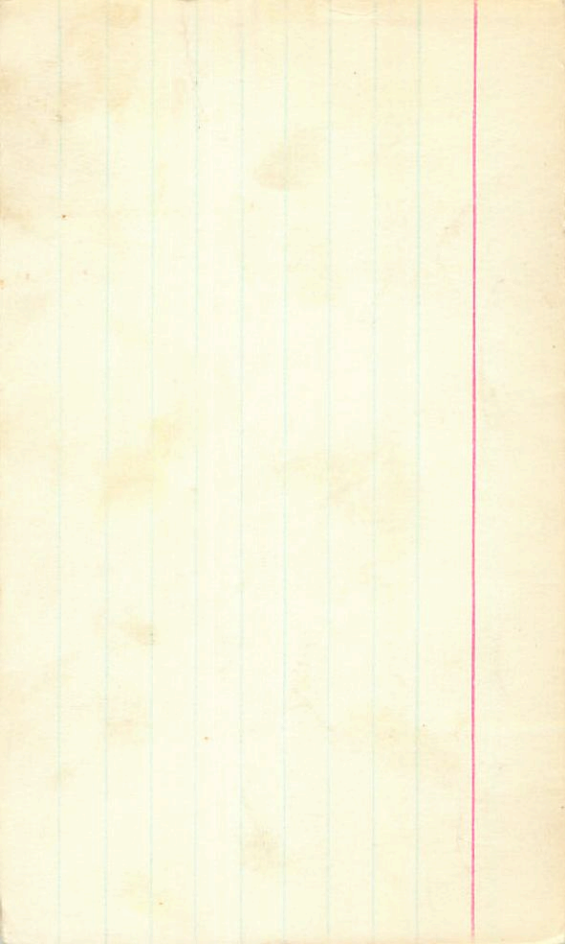
~~8.33 +1.13~~
 8.77 +1.12 12 June 69
 8.70 +1.11 17 Aug 69
 8.72 +1.115 11.07
 cp excluded

350 V
 7.98 +0.43 ^{30 June 69}
 8.14 +0.415 17 Aug 69
 8.06 +0.42

RR ✓
 8.07 +0.403 15 June 79
 8.14 +0.415 19 Aug 79
8.10 +0.409 (2) (2)

part cp. 9.75 + 1.15 12 June 69
 8.66 - 9.0 13.26 - 5.87 36.87 83
 8.64 - 7.5 13.21 - 5.55 76.87 83
8.65 - 7.8 13.24 - 5.56 2

value



✓✓ + RP ✓

191785

G143-425

7.08-201 1003-391 16 July 77
 7.16-210 1021-469 17 July 77
 7.24-212 1031-458 19 July 77
 7.28-211 1026-463 21 July 77

3530/24

7.3 8/10/77

7.22+0.855+0.49 2E
 6.56+0.805 2E
 +16.065

B 1354+1615+11.10
 12.41+12.45 2

6.98 10.205 1A

6.98 8.96 2H

6.57 10.285 1B

6.48 10.285, 1B
 6.46 10.305 2B

7.08 10.305 12 July 77

6.99 10.295

6-143-34/35 20 09.4 + 16.05 1863

11.44	+0.85	+0.49	12 July 64 100 ^r
10.71	6.93	+0.29	20 July 64 100 ^r
A	6.99	+0.32	11 Dec. 64

3530/24 7.32 +0.86 +0.49 9 July 64 100^r

1206 1078 826

B	13.94	+1.26	10 July 64 100 ^r
	14.03	+1.23	11 " " "

	13.93	+1.60	9 July 64 100 ^r
	13.95	+1.63	12 " " "

Also Paid

(2B)

8.36 + 49 - 12

194558

✓ A R

20 25 18 + 9 23

G 2416

✓ + R

3550

8.25 + 0.505 3 May 77

G 2415

8.34 - 378 (820) - 598
8.34 - 367 819 - 564

8.24 + 0.185 17 Sept 75

8.23 + 0.185 18 Oct 75

8.38 - 357 + 752 - 555

8.39 - 326 + 788 - 508
8.38 - 319 + 769 - 478

8.19 + 0.185 5 July 77

8.23 + 0.185 (4)

8.35 - 360 + 782 - 570

2.192 (3)

5.6.

8.35 380 082 336 2619

←

351 087 265 2.592



16.11

20

AD, 90067 ✓ 49 01 40 +15 32.5

2003 +1528

6.9 7.8 6.6

~~2003~~

⊗

0.9m 10.0

218-268 964-504 2116+70
217-264 946-578 2158+70 30.510
216-268 972-816
215-268 972-816

✓

+1.0

9.24 +0.259 11.500
9.25 +0.274 10.510

9.24
6.94

10.266

0.74

W Newgp runt

+ D

6.57+755+23

194640 ✓ ✓ 20 26 30 -30 56

663 +271 963-484 2.123 5 Sept 71

662 -272 968-444 2.125 4 Sept 71

6.59 -286 940-525 129 June 77

665 -274 961-497 11 July 77

663 -281 970-515 19 July 77

663 -274 965 -498 2.124 (4)

430 228

6.38+225 (8)

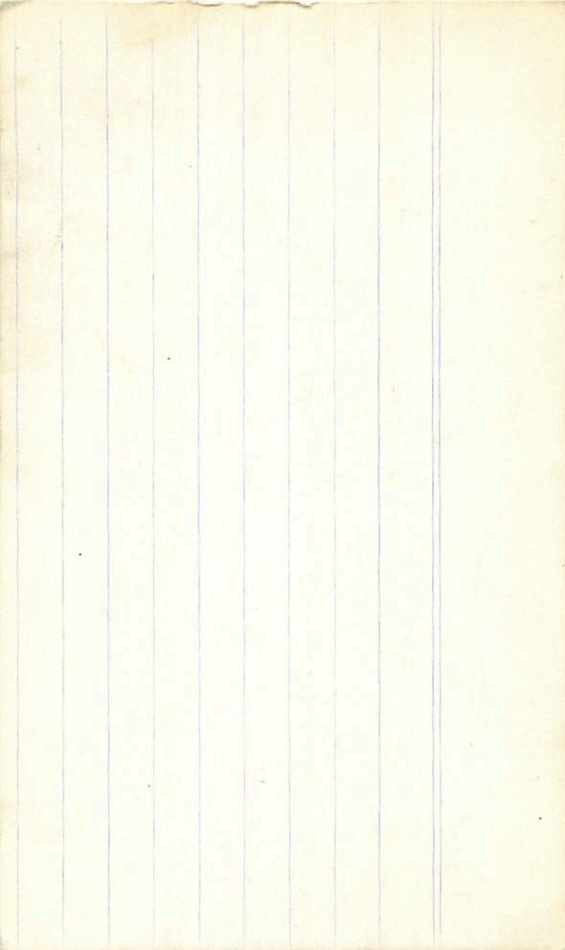
6.28 -10.245 12 July 77

F_c 5.85 + 245 Cape

105

3554

↑



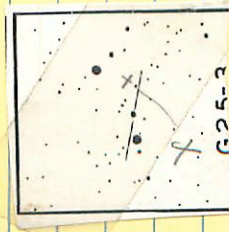
25-3 ✓

20 46 20 +10 47.5 9.5 14.1 h.m.

9.22 + 1.03 + 8.25

3584

9.74-110 12.14-528 30.253
9.70-58 12.02-542 25.854



9.20 + 0.4019 19.79

9.14 + 0.3975 19.77

9.17 + 0.399

⊕

20

19638 ✓
7875 ✓

HP 12 ✓
497

S.11 453

20 38 20 60 37

5.14 -359-854-435 2.153 18.5 ~~18.5~~

5.16 -359 860 -454 11 Jun 77

5.16 379 840 -443 16 Jun 77

5.16 -366 857 -469 21 Jun 77

5.12 -360 855 -438 2.158 4.56 881

5.15 -361 856 -443 2.156 5

1453569

$T_c = 4.47$ 20A
+491 Cape

4.82 +0.195 12 Jun 77

4.50 +0.205 15 Jun 77

4.86 +0.200 2

Don't know
1437 132- 2.622
2.622
2.622
2.622

V827

20

54^{7.0} 10

+13 068.8 25

8-81+1.05+1.05 P

35

3598

101

8.85 8.15 +0.42 13 out 63 60"

8.82 8.22 +0.42 18 out 63 60"

880-95 1267 1221 10123

897 700 1273 537 3678

880 95 1270 529 2