

8-21-48-15

RT ✓

10 50 75 + 20 23.5

818 ✓

5204 ✓

52-859

22

8-21-48-15

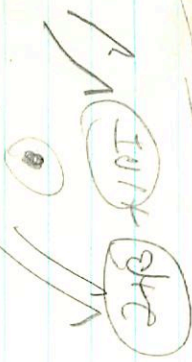
345-164-259 (11/11)  
8-21-48-15-808-818-818-818  
8-21-48-15-818-818-818-818

8-24-361-808-22011  
8-18-272-804-585-22011  
8-27-379-827-543-818-818

8-04 + 020 21076

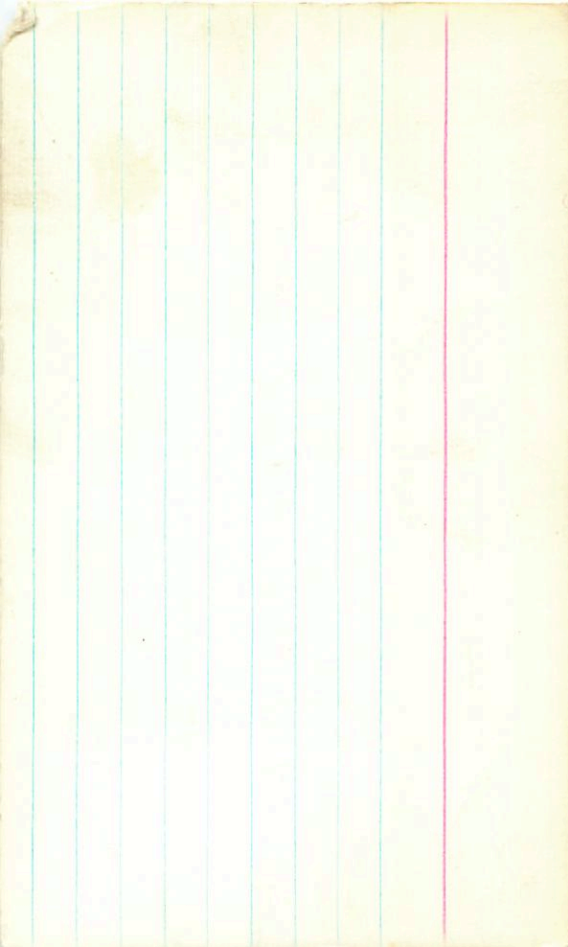
805 + 023 172676

8-04 + 0215 (2)



8-22-370 808-584 2123 (4)

0204-1185



58-25

+2102247 ✓

10 50 20 +20 24 7983

1=3

(X)

8.23 -369 818-569 2.130 27982

8.25 -363 801-573 2.126 30852

(23.9)

8.24 -366 810-571 2.128 (2)

8.26 -374 818-586 2.128 80 (2)

8.21 -366 802-581 2.123 76 (2)

8.22 -370 809-584 2.112 411000  
8.02 +0.182 2 Mon 79

(X)

—

8.22 -369 809-580 2.125 (4)

44-25

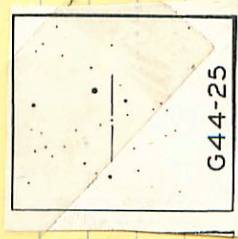
10<sup>h</sup> 34<sup>m</sup> 15<sup>s</sup> +07

38 11.9 12.5 B

2284

12.37-183 1090-585 28mm  
74

12.27



G44-25

1232 582-348 310 366

A ⊕

11.91 10.363 17 Jan 83

11.91 10.344 21 2679

11.91 10.354 ⊕

60" IR + 115 ⊕

V580 10-24-50 -6 19 9.7105

9.72 9.17 +0.41 25 Mar 44<sup>60<sup>r</sup></sup>  
9.72 9.27 +0.42 10 Apr 44 100<sup>r</sup>

9.79 +0.95 +0.66 9 Apr 64 100<sup>r</sup>  
9.79 +0.95 +0.63 12 " " "

(X)

(X)

LHS  
226

25 40 - 06 28

9.8 10.9

0.102

503002

9 Nov 83 9.23-157 147-524

TRaps 9.77 - 155 1146 - 520

9.77 9.56 1146 - 541

(2)



G55-16 2.24

FRalm  
VPA

(AT)

10.237 - 17.44

10

25

10

-17

52.5

110

12.1

R

①

②

③

10.66 - 15 1347 12420 Jan 83  
 10.87 - 8 1351 10154 Feb 83  
 10.75 - 12 1345 10200

2200

10.21 10.492 18 Jan 83

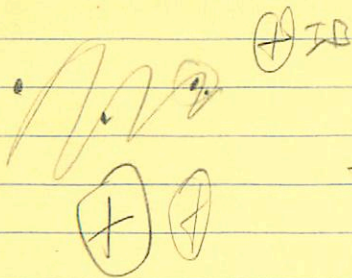
10.21 10.479 20 Jan 83

④

10.21 10.516 21 Jan 83  
~~10.25 10.500~~

10.23 10.496 ⑤

11 283 - 5652 ✓ 11 29 40 - 57 01.5 # 8.9 10.2



372 Cup  
2.47

7.52

+0.354 20268

7.81

+0.360 14249

7.56

+0.357 364

✓<sup>0</sup> 10.16

+0.322 21259

8.38 - 116 1244 - 556 3mm 72

834 - 109 1245 - 559 20mm 72

836 - 112 1247 - 558 (2)



120-30  
+2202340

11

14.00

+21

25.5

8.8 9.2 6.5



1980

+

II

X

7.30-275-921-473 7man  
8.28-285-932-470 25 Jan 2

S  
A

8.00-10.20-720-279

18m 11 hcc of  
20.8

(A)

B

(B)

94025

8.02 - 10.196 24 Jan 50  
8.06 - 10.183 25  
8.04 - 10.189

104800

9.26 -327 862 -570 2.106 7 mar 81 (2)

9.23 -326 845 -564 2.106 13 June 81 (2)

9.22 -328 848 -573 - 22 Mar 76

9.23 -327 850 -571 2.106 (3)

154

9.03 10.211 19 July 87

11017

335

~~175~~  
462

+364

12.0

~~1-586-0107~~

11-37

12 00 05 -01 37

11.10.20<sup>10</sup>

2454



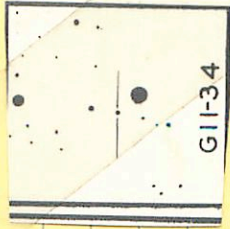
5 Apr 83 10.54 -87 1281 -572

7 May 10.55 -83 1278 -572

FR

FD

60 10.59 -85 1280 -572



G11-34

10.37

+0.421 2158

10.45

+0.436 2024

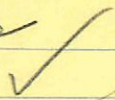
10.41

+0.428

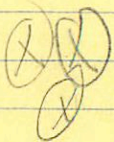
1520251

11 43 35 +25 39 10.4 10.9 F8

121-12



10.40	-350	854	-558	2.115	31	Jan 81
1034	-361	824	-548	2.137	20	Jan 82
1040	-360	811	-504	2.110	12	May 83
10.40	-370	817	-534	2.114		



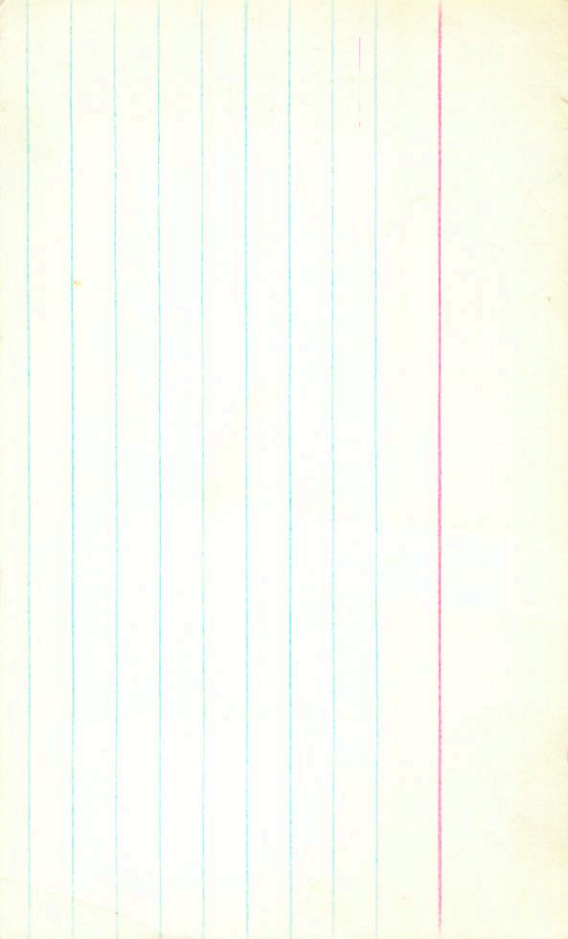
2450

10.16 +0.177 2 Mar 79











Also R.F. ✓

12 03 05 103 2705

926758-06

100401

926758-06

6-11-36

924 -310 818 -540 ✓

903 -316 924 -365 14776

935 -340 739 -441 117076

922 -328 848 -873 227076

926 327 862 -5902.106 9mm 818

08

⊕

⊗

⊗

⊗

9.18 +0.205 16mm 76

9.04 +0.222 2mm 76

9.17 +0.2118mm 76

9.15

9.15

+0.213

923 219 833-556 ②

2

10.07 10.47 10.87

55

24

12

B

2558

-45 44.5 11.3-11.9

10.67 10.87 10.97

10.01 10.07 10.07

1235 -5.22 10.72 -7.2

1245 -5.22 10.72 -5.22

1240 -5.42 10.72 -7.2

10.72 -5.22 10.72 -7.2

10.72 -5.22 10.72 -7.2

10.47 10.47 10.47

10.47 10.47 10.47

10.47 10.47 10.47

10.47 10.47 10.47

10.47 10.47 10.47

10.47 10.47 10.47

10.47 10.47 10.47

10.47 10.47 10.47

10.47 10.47 10.47

10.47 10.47 10.47

10.47 10.47 10.47

10.47 10.47 10.47

10.47 10.47 10.47

10.47 10.47 10.47

10.47 10.47 10.47

10.47 10.47 10.47

10.47 10.47 10.47

10.47 10.47 10.47

10.47 10.47 10.47

10.47 10.47 10.47

10.47 10.47 10.47

10.47 10.47 10.47

10.47 10.47 10.47

10.47 10.47 10.47

10.47 10.47 10.47

10.47 10.47 10.47

10.47 10.47 10.47

10.47 10.47 10.47

10.47 10.47 10.47

10.47 10.47 10.47

10.47 10.47 10.47

10.47 10.47 10.47

10.47 10.47 10.47

10.47 10.47 10.47

10.47 10.47 10.47

10.47 10.47 10.47

10.47 10.47 10.47

10.47 10.47 10.47

10.47 10.47 10.47

10.47 10.47 10.47

10.47 10.47 10.47

10.47 10.47 10.47

10.47 10.47 10.47

10.47 10.47 10.47

10.47 10.47 10.47

10.47 10.47 10.47

10.47 10.47 10.47

10.47 10.47 10.47

10.47 10.47 10.47

158309 ARW24  
1008301

LF7 4708

12

25 16

-48 45

4.7 60.65

11.1 4702

12

24 28

-48 42

12.08 0.60

15.5 4 2804/7.0

43 4(110)  
20 4(18)

6.14 +0.22 29mg70

6.25 +0.68 +0.22 Cape

52 1(110)

6.15 +0.20 11mg70

6.35 +0.69 +0.20 22 Apr 68

22 1(110)

6.17 +0.215 2mg70  
6.15  
6.1

6.30 +0.68 +0.215 28mg70

26 1(110)

6.24 +0.67 +0.225 30mg70  
6.20  
6.1

6.30 +0.68 +0.215 ④

26 1(110)  
26 1(110)

10.22 +0.485 11mg70

10.70 +1.14 +1.02 Cape

33 4(110)

10.24 +0.50 2mg70

10.75 +1.16 +1.01 22 Apr 68

33 4(110)  
30 1(110)

10.21 +0.48 26mg70  
10.25  
10.485 ③

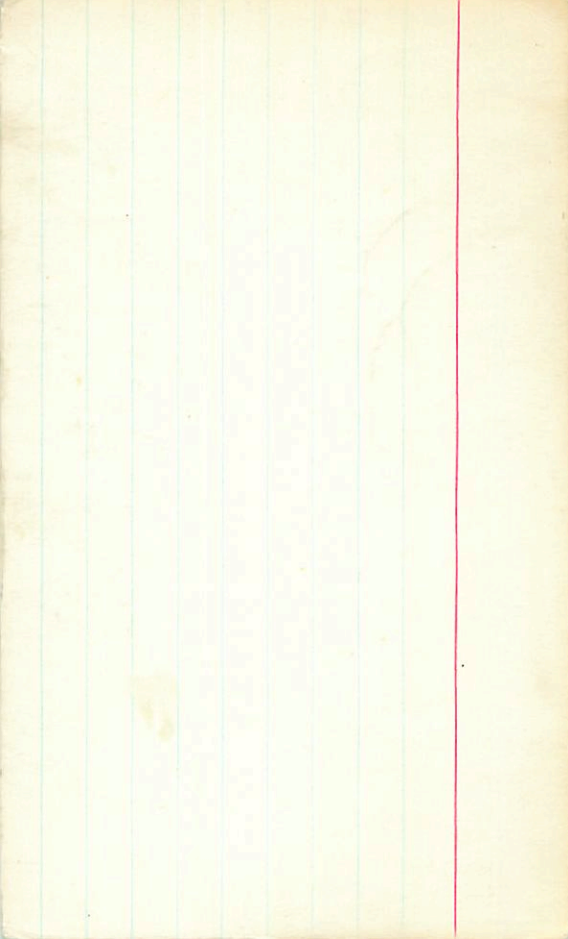
10.79 +1.075 +0.92 28 mg70

33 4(110)

10.78 +1.11 +0.935 30 " 70

33 4(110)

10.75 +1.12 +0.96 ④



2526

11/6/210

12

12

10

+10

56

7.5 5.708

IO

IRI

7.58-297

912

472

13

June 5, 60

Q

7.36 70.223 0.477

R✓

#174734  
HD119309 done

12 25 4/5 -48 48 6.20 + 0.68

-48 <sup>4791</sup>  
7444

→ 12 24 50 -49 44 10.75 + 1.12

do  
intermediate band (12) ✓  
13

10.06 0.491 15 April  
10.08 0.498 17 April

10.72 -67 1255 -544 12879  
7 Aug 79

10.07 0.497 16 July 81

10.74 -81 1257 -543 53

~~9.98 + 0.497 320 July 79~~

10.74 -66 1251 -562 28 June 79

10.06 + 0.469 21 July 79

10.74 -89 1263 -595 30 Jan 79

~~10.07 + 0.496~~ (4)

10.78 -78 1257 -561 (4)

10.07 0.481

148 501 343 155 1012 9953

(498)



-48°7414

0.80

LTT4702

12 23.4 -48 40 12.0 g

LFT908

month

11.76 +0.49 +0.11 22 Apr 68  
 11.75 +0.50 +0.07 4 May 67  
 11.86 +0.45 +0.06 5 May 67

220

11-034

2814

Chart

10.70 +1.14 +1.02 large  
 10.75 +1.16 +1.00 22 Apr 68

10.72 +1.15 +1.91  
 38 4.760 0.65 / 6.25 +0.68 +0.22 level  
 6.35 +0.64 +0.20 22 Apr 68

4708 12 24.2 -48

43

430

140

33

18) 590 L

54

50

52

27

79

36

✓ X X Check

108754

2566

903+70+10

12 28 8 13 -03 13

G-13-43

505 442 2018 1547

9. 11.2  
8:22-4027

1 MW 1

902-278 986  
903-285 985

27 June 77

5.5

69 mm 1 LC:04 56.8  
885 10.245 31477

906-263 956  
904-283 939

25 June 76

862 10.245

904-283 939

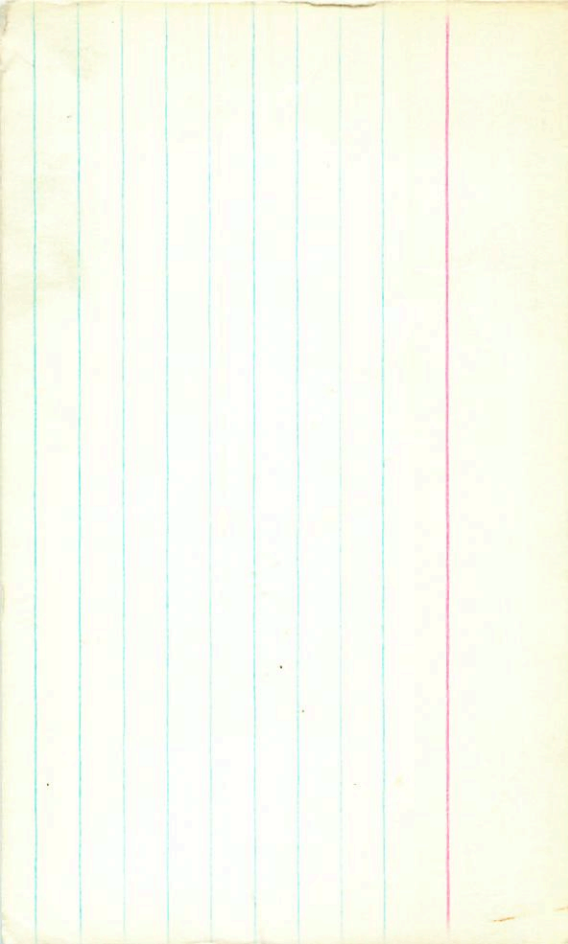
23 June 76

864 10.25 29144  
868 10.275 26146

904-283 939

(4)

971 10.255 (5)



108754

12 28 02 -3 09 903 +70

~~8.75 +0.27 1mm~~

~~8.68 +0.275 26 July~~

~~8.72 +0.27~~

~~8.62 +0.245~~

~~8.80 +0.30 3 Apr 69~~

~~8.64 +0.25 24 Apr~~

~~8.68 +0.275 26 July 69~~

~~8.65 +0.275~~  
~~+0.257~~

37

046 (7)

4.1  
2.4  
9.2

12258 -16 38 12 27 15 -16 48 97 10.6  
12258

(HSC)

✓  
X X X

1120 224 275 -492 7 Mar 79  
944-1511 85-1511-505 1 Aug 50

8.98 +0.374 26 Jun 80  
8.92 +0.375 2 Mar 79  
8.94 +0.373 11 Aug 80  
8.98 +0.374 ③

⊗

944-1511 85-1511-575 10 Aug 71 60  
945-149 1185-522 6 " " "  
944-154 1145-575 ②

+81.7213 ②

6784

h.c.e

o

475-

771-

h.c.e

4734 12 25 45 48 47 6-25-115

627-300 928  
916 -484 2.134 22 July 81

627-262 ~~827~~ 916 -410 2.138 202413

627-244 913 -412 2.130 17 MAR 83  
627-215 919 -415 2.136 (3)

414 190 446

610 190  
414 190

6.00 205

5.97 193  
5.54 796

8.38 10277 17 JUN 83

8.37 10245 17 MAR 83

6.25 412 200 374 10 000



10.73 - 776 1257 - 569 ✓

10.72 - 65 1240

10.73 - 74 1258 - 544 (2)

10.74 - 78 1257 - 562 (2)

10.72 - 72 1240 - 542 (2)

10.73 - 71 1252 - 545 (1)

644 497 362 ✓

641 232 ✓

-3708082

12 42 35

-37 35.5

7.4 8.2

12410-3726 ✓

DKS 2.115 ✓  
⊗

2.54-303 904-548 2.115 29 June 81 ⊗

2.56-310 914-557 2.108 14 June 81 ⊗

2.55-302 909-552 2.112

1 PI ⊗  
//

7.31 +0.235 2 Mar 79

7.28 +0.234 17 June 83

7.30 +0.235 ⊗

X X X  
113083

(RI) ✓ (URV) alive  
13 00 20 -27 16

2669

8.04 +55

(2B) (K) (K)

8.06 -342	839	-543	21 Apr 76
8.08 -348	838	-573	22 " "
8.08 -340	823	-576	23 " "
8.06 -361	843	-550	2.109 13 June 81 (LD)
8.09 -337	833	-544	2.108 14 June 81
8.07 -342	835	-584	2.108 (S)

8.05	+0.20	16 AM 71
7.42	+0.22	21 Nov 76
7.18	+0.20	18 Apr 76
7.58	+0.205	(3)

364	113	325	105	(S)
8.06 366	<del>701</del>	240	2.558	blm
	114	232		

~~1.226 +0.85 2.565 (2) 5/8/81~~

