

1945
V 208 22 31.1 409 10 98 M2

054VVV 4137 AGN
4536 4150 VV 3828

10.42 +1.53 +1.19 4 July 64 100"
10.33 +2.48 +1.13 5 " " "

470489

10.34 9.17 +0.89 3 July 64 100"
10.40 9.31 +0.85 6 " " "

976 940

✓

22801-2930 22 31 45-29 20.5

3826

14.0 15.5 am

①

1358-10.645 20/1/24

27-32 ✓

22 31 05

-04 48

3928

12.0 133 h-m



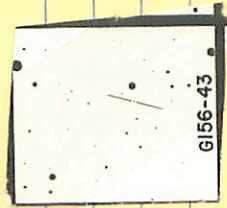
11.83 to 543 21/79

156-43

22 42 55 -05 045

3846

144 163 m



1342 +1067 201729

V893 22 37.2 -01 01 9.9 mo 1963

104323 3833 +53 -577 10000

10.04 +1.44 +1.20 2 July 1000
9.98 +1.47 +1.15 5 Jan 1000

10.03 9.01 +0.77 3 July 1000
10.06 9.03 +0.77 6 " " "

3947

22280-4600

22 29 45 - 45 50

3947 (7)

12-6 141 m

3

1259 4116 11850
OS 6/11 9117A 65.51

128-11

✓

22 52 30 +27 39

(X)

3964

11.2 12.3 b



(R)

11.4 +0.294 20074

11.08 +0.306 2210281

11.11 +0.300

5 Pay 22 499 409 34 1950

b) 628-21 3565

96

13.50 +1.65 +1.23 = 4 Sept 62-¹⁰⁰"

13.53 +1.68 +1.31 5 " "

13.53 +1.65 +1.42 6 " "

13.52 +1.64 +1.32

→ — 12.26 +1.13 6 July 64 100"
13.58 11.67 +1.06 3 July 64 100"

25-20 ✓

22 50 40 +03 23

13.3 15.0 m

3960



12.48 +0.968 14.1679

G28-20

23 00 05 -18 42.5

~~22 58.5 -18 52 13.3A 0.60~~

(87) 7A?

22585-1853

11.67 +1.11 +0.92 > Out 70

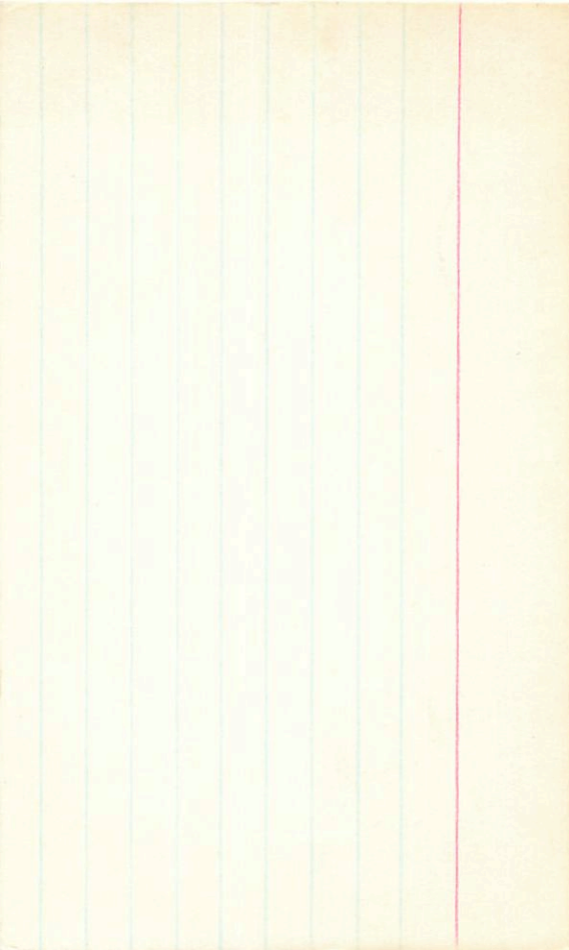
11.07 +0.435 8 Out 70
10.98 +0.410 21A 74
11.02 +0.420 (2)

3854

4124

LTT 9323

LFT 1755



✓

22.577-2352 22 59 20 -25 42.5

12.8 14.6 AM

①

2586

①

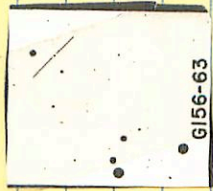
12.89 +0.850 20.874

156-63V 22 53 40 -05 35

18.1 15.2 m

3572

12.47 + 1232 July 74



G156-63

3898

(7)

23 08 40 -28 03 11.4 13.5
1

m

1118 +0.5711 July⁸⁰

645
3397 18 25 25 +8 46 819065
3388 18 25 20 +8 365 809565

3892

(4)

23 03 15

+10

47.5

11.0130

m

as per 11 48904 90.11

3544

20 22 00 40 37

132

145

6-11-11

Y 5525.1 ✓ 23 00 25 -54 36.5 11.5 12.2 m
LFT 1856 ~~22 58.5 -54 46 13.3 0.54~~

LTT 9324
22 58.6 -54 46

12.06 + 885 + 4.5

12.33 + 88 + 3.0

①, 3.10 4.11

4.53

12.36 + 0.86 + 0.17 7.0 out 70

12.41 + 0.80 + 0.20 3.0 out 70

12.38 + 83 + 185 ②

3884

12.02 + 0.26 8.6 out 70

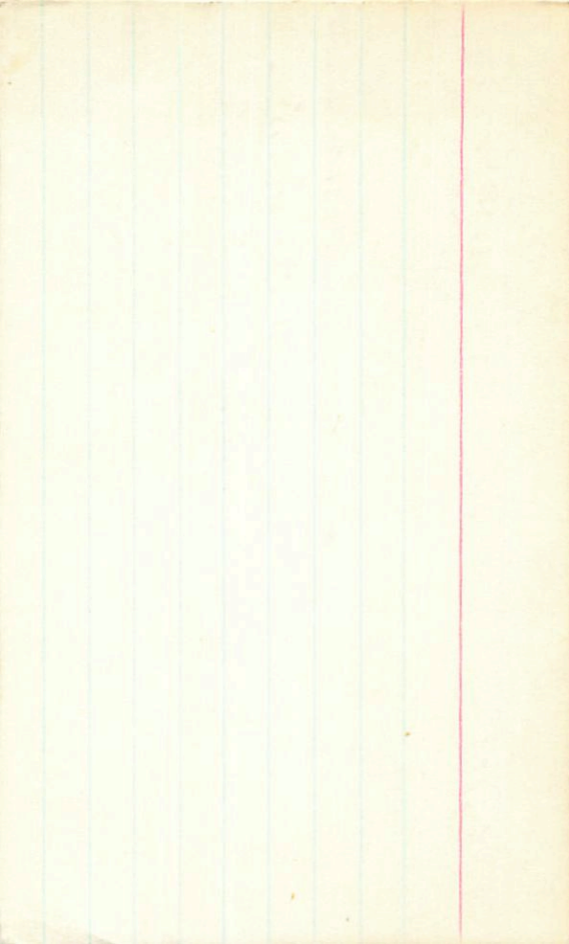
~~12.46 + 0.22 2.7 out 70~~

12.08 + 0.275

12.05 + 0.27

11.95 + 0.303 18.4 ②

12.00 + 0.290 ②



3910

(F)

23096-1802

23

11 10

-17 82



19.1 15.2 m

1335

+1.283 12 July 80

PD

3906

230236358 23 09 15 -63 4F

11.5 13.0 m

3906

July 21 ~~(F)~~ → 10.56 10.5988 Sept
599 80

of the in it

the Chest

Drawn to
[set 1.1.1958]

Drawn to
[set 1.1.1958]

3905

23076-2810 23 09 15 -28 00, 15

July for 3905

13.9 15.6 mm

W. York

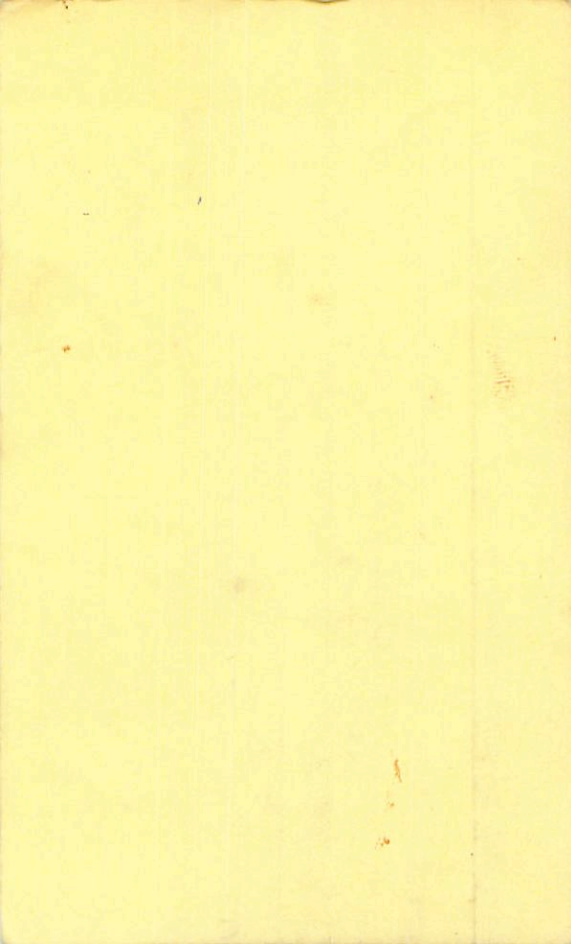
⊗

~~W. York~~

~~W. York~~

13.74 11.26 3 24 Aug 11

W. York



✓
23131 -1235A

23 14 40 -12 28

23132 -1235B

23 14 50 -12 28.5

11.5 13.6 m } 133 " 1010

15.2 16.4 m }

6/8/58

⊕

11.8 10.5 10.1 18.2

11.2 10.5 10.1 18.2

11.70 10.5 10.1 18.2



3916
23108 - 2500

23 12 55 13 00

-74 50.8

3916

12.5 14.0 m

When light - from
front is strongly red
and cloudy

11.24 + 0.717 20.724

11.23 + 0.728 12.958

11.24 + 0.722

3916

231A-8187

23

13

25

-81

27

(F)

10.5 11.8 b-m

9.15 10.57 10.90T
51.6
08Pm/ce1 6.89.04

3934

23171-7/22

23 19 05

-71 13

13.2 14.6 h-m

3934 ⊕

12.89 +0.434 85.980