

✓
22000 -7010 22 02 30 -70 01

13" { 10.5 12.0 m
146° { 14.0 15.5 mm

{ 15/05651

10.17 +0.523 15 Aug 51

12.53 +1.004 15 Aug 54

2156 + 0110 ✓

1816 9110 22 07 10 +01 18

HS 209790 SH

9.15 + 1.43

3746

01840

9.15 11.30



102 (14)

9.23 + 0742 15 June 74

465 - 264 ABIC
- 261 - 278 TILM

~~2~~

22

21599-5053

~~27~~ 01 50

-50

44.5

3748

11.9 13.9 mm

⊕

⊙

10.96

+0.5511779

10.96

+0.53710978

10.96

78.94

89.90



588045

22047-7910 22 07 30 -79 01.5

✓ 3766 10.5 10.0 mm

~~CPD-27910~~
051196

KS

10.39 +0.369 18 Aug 79

19h
19h
19h
203
203

18-31 ✓ 22 05 45 +03 19 12.9 14.2 m

13.22 +1.62 +1.35

3760

13



12.15 +1230 15/16 76

nut 6 J

22005 + 19 46 22 01 55 + 19 55

22

3247 14.0 15.8 m

⊙

12.11

1356

6c PWS 165174 + 15418A 29

✓ 22102-1830 22 11 50-05 21 21

(20)

13.9 15.9 m

3775

①

Sept 18 1881 1931

W13941

22 08.2 +22 33 9.4 dNY

✓838

9.21 +0.92 +0.68 PY S₁ 63

3767

9.23 +90 +68 R R3V

9.20 867 +0.37 6 July 64 100⁴
9.24 889 +0.41 3 " " "

22-06.7 -810

27-14 ✓ 22 08 15 -08 01

376415

2.0 (12.7 14.2 m
13.4 15.2 m



G27-14

AB 11.97 10.777 20124

188-51 ✓ 22 15 55 +28 26

3784

13.3 15.4 mm



12.56 +1.108 15.129

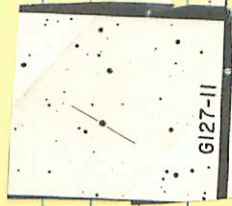
✓ 127-11

22 13 35 ✓

+27 45.5 ✓

3781

10.8 12.3 m



9.46 +0.1652 15 Jun 79

(not G)

3777/79

27-112-0642 A 22 12 45 -06 33

B

(G)

52" { 13.5 15.0 hr
88° { 14.1 15.1 hr

WD

5/15/88

(X)

77 14.09 70.650 10/1/80

X 14.00 70.665 10/1/80

ok

22178-42 ✓ 22 19 40 -42 24.5

Bethany

11.2-12.2 m



11.66 +0.567 2017.79

11.66 +0.572 1017.79

11.66 70.550

✓ 22147 -0903 22 16 15 -08 54

208⁰ } 131 148 mb
9¹¹ } 140 156 m7

27875

11.93 +1277 201774

13.11 +1434 201774

22150 3626 $\sqrt{2}$ 16 45 -34 17

• 3789 $n = 19.1 - -$

• (•)

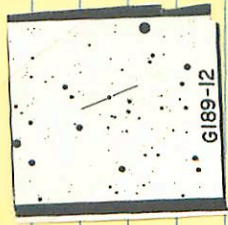
12.78 + 1.224 201479

Again

189-12 ✓ 22 19 50 +29 40

12.8 14.5 m

3797



12.48 +0.45 15 Aug 79

✓ 189-11 22 19 45 +28 30

8796 14.0 16.3 m



13.30 +1220 15h 79

18-yr ✓ 22 19 25 +12 09

12.6 14.3 h-w

3745



12.57 +113715 Aug 29

Imms

+565-3705

WBD 311 3391

LF71710

22 20.2 -57 28

554545

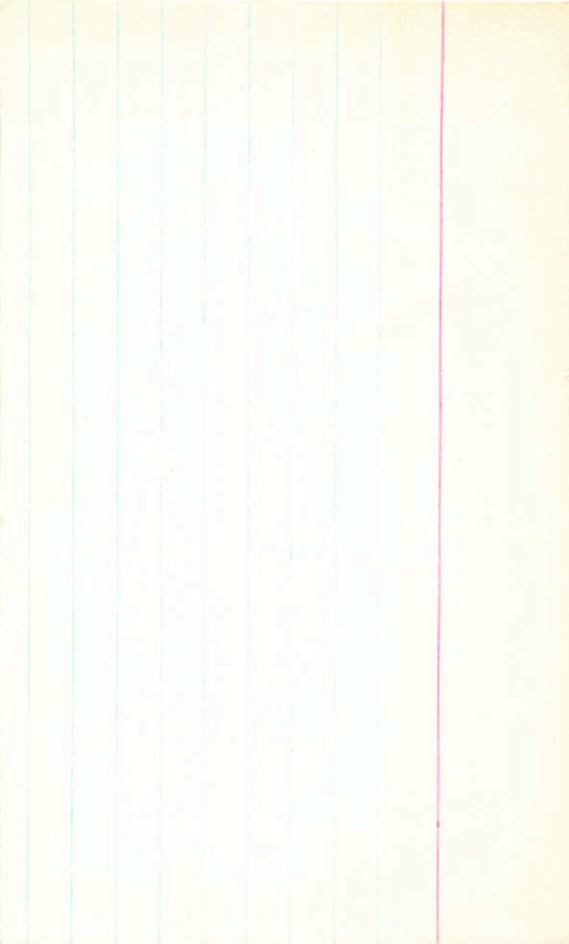
NO

0PM27901

~~10.82 + 147 + 1.17 ①~~

② 0.550

~~9.72 + 0.80 ②~~



-57 18541

22202-5728

22

22

15

15

-57

18.5

10.7 12.2 mm

3902

✓

12

974 +0.805 18.5

0.68

LTT 8955 22 20.2 -57 25 122.6 1180

18.22.21

BPM 27801

9.77

0.825

214-56

10.82 + 1.47 + 1.17767

9.73

+ 0.808670

5458065-

9.72

+ 0.8027670

0527250

9.72

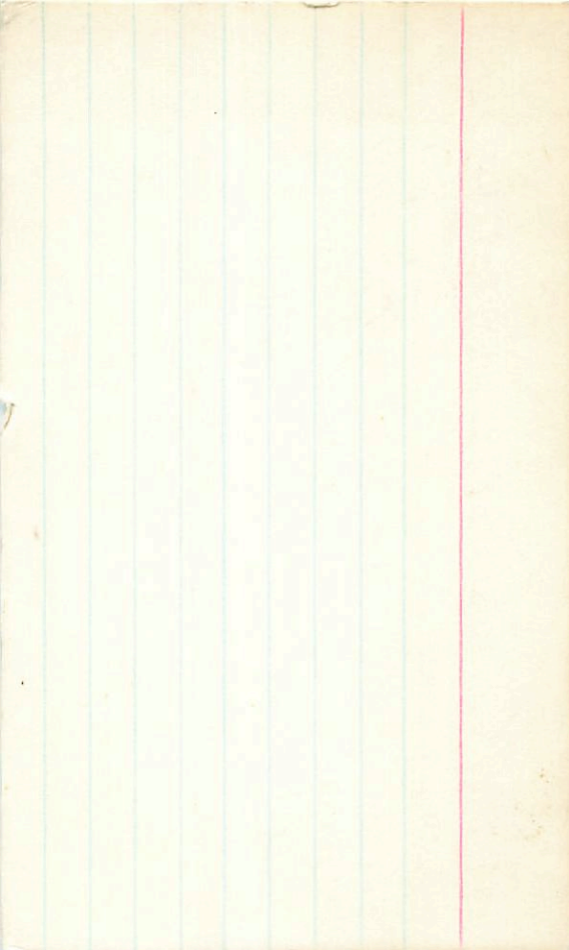
+ 0.80

0.0118

5458 368 6012

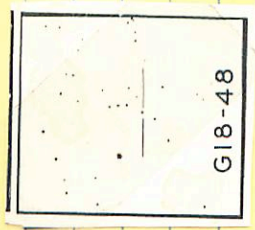
8.30

6.88



18-48 ✓ 22 25 15 + 2 54.5

3908/9



201° (13.7 15.5 m
11" (15.8 17.2 m

(A) 12.35 + 1.214 15.1479

22286-4737

22

25

30

-47

28

3813

4

131 146 m

13.01 +0.630 11/1/98

845 ✓

22 22 30 +14 17.5

130 14.1 hr



12.20 + 1.00 = 13.20