

212274-2506 21 29 05 -24 55

✓
12.0 13.6 km

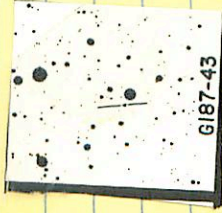
2174

11.23 40.884 15 Jan 79

187-43 ✓ 21 25 30 +24 47

127 148 m

3623



12.46 41057 19474

✓

2/236-1607

21 25 15

-15

59.5

① Check (OK)

body

13.4 14.2 h-m

3672

13.45

40.517 21/4/79

26-ny ✓ 21 32 50 +01 412

3686/5

6° 4" (14.3158 arc
1446 14.1 arc

1107
10.5

A 12.30 +1226 15 Aug 74

.416

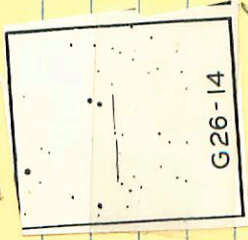
AB 1184 +1258 15 Aug 74

11.07

12.99 11.07

12.30 10.55
11.67

11.70

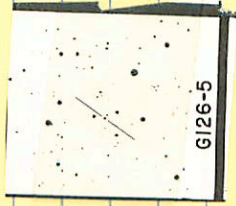


11 Aug 068

✓ 126-5 21 29 20 +23 06.5

12.5 14.2 m

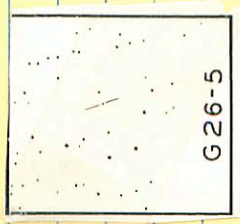
3650



11.82 +0.564 19 Aug 79

✓ 26-5 21 29 25 -07 11 13.1 14.6 m
8m = 0.5" 15

3682



1354 +0.628 217479

✓
21378-1537 21 39 30 -16 29

2701 13 14.5 160 m

0669
0109
595

9956 615
0940 004

14.01 +1.103 180g 29

0869

129

30.30

+120

93-25 ✓

21 3 5 25 405 14.5

12.6 14.8 m

13.26 + 1.54

3645



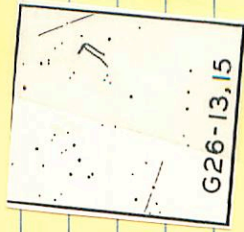
G93-25

12.18 + 1.040 15 June 74

26-13 ✓ 21 32 45 -06 56.5

36.89

13.4 14.2 h-m



12.53 +1320 18 Aug 79

G-126-27 21 41.0 +20 50 1943

13.15	+0.19	-0.71	18 May 64 100"
13.26	+0.14	-0.74	12 Jun 64 200"
<u>13.27</u>	<u>+0.18</u>	<u>-0.70</u>	17 Jun 64 200"
13.23	+0.17	-0.72	

370

BPM 9640 Y

LF 1655

21

40.4

+20

47

6-126-27

EG 148

13.28 + 0.17 - 0.72 ③

? (171 200 a-
1620 2018 PM)

✓
21394-1223 21 41 00 -12 15-

✓ 12.6 143 M2

12.6 143 M2

12.6 143 M2

3702

1154 + 1057 18 Aug 79

3719

21457-6321 21 48 00 -63 12.5

John cord (8k) B658

140 156 m+

1000

1000

1000

3719

11.30 +1066 184279

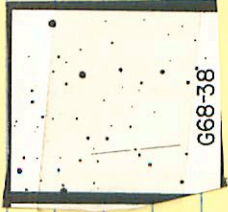
11.31 +1072-169480

11.30 11.069

68-25 ✓ 23 43 55 +17 57
+17 57

1007 14.015.2 ~

7



68 14.30 +0.653 19 Aug 29
14.35 +0.652 12 July 10
14.35
14.32 +0.652

✓
21481-2831 21 46 50 -28 22

19.1 16.0 m

3772

1388 41177 17M₂74

✓ 21511-4350 21 53 00 -43 42 (40)

3728 22 14.3 - -

①

1370 +1350 18 Aug 79

21460 -38034 21 47 45 -37 55

B

3" { 11.9 13.4 m
13.3 -

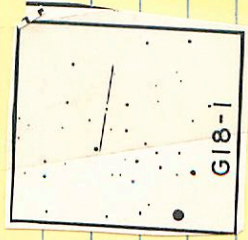
100

371610
(X)

AB 11.15 +0.586 18 Aug 79
11.12 +0.939 10 July 80
11.14 +0.962

G18-1 ✓

21 50 15 +12 45



3222 13.3 15.0 mm

11.68

10.5

12.08

+1164 19 Aug 74

21559-3240 ✓

21 57 40.4 - 32 (31) } 355⁰ 113''

21559-3242

21 57 40 - 32 34 } (33)

(1)

3738/9

14.5 14.2 m

13.6 15.9 m

B
Bayer

(1)

21559-3240

13.22 +1.253 21559-3242

(21559?)

1370

+1.175 21 July 79

13.17

+1.252

21 July 79

1395

+1.484 20 Aug 79

13.22

+1.238

20 Aug 79

1344

+1.500 8 Oct 79

13.20

+1.248 (3)

13.97

+1.492 (2)

✓ 18837

22

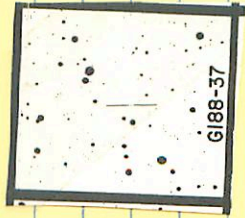
00

15

+27 04

14.0 15.1 m

3743



13.24 11.043 15.129

3735

21550-0942 21 56 40 -09 34

3735

Dark Dr

18.8 15.3 m

(+)

Good Grey mfg

(X)

~~Light grey~~

Again

(W¹)

~~Dark grey~~

~~pure~~

13.60 -10.448 22 Oct 81

14.12 -10.440 10 Feb 82

13.60 -10.421 30 Nov 81
13.60 +0.035 (2)

→