

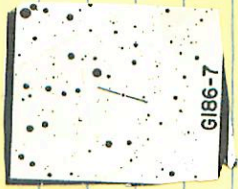
✓
1810-7

19 59 40

+27 24

13.8 15.1 beam

3506



11.56 + 1028 15.1

21033-5430 ✓ 20 05 40 -54 24.5

~~REST~~

14.8 16.3 m

○ REST

13.65 + 1.012 210374

✓

20042 -52 53 20 06 35 -52 47.5

120 13.5 m

1 0

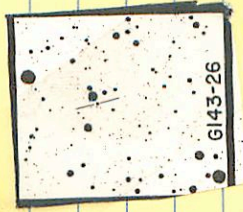
3525

11.93 + 103621 July
79

143-26 ✓ 20 04 45 +15 20

14-015-1 ~~1~~ R

3614



1480 +0.805 15/14/74

Vyo 330 20 07.5 -20 37 9.1MO

3520

8.97 +1.29 +1.21 23 Aug 63
8.92 +1.29 +1.20 9 Aug 64 100"

8.92 8.15 +0.56 17 July 64 100"
8.28 +0.525 30 Aug 70
8.21 / +0.56 1 Aug 70
8.21 / +0.55 ③
547
low

151391

LTT 7992 11.0 118 0.56 2300

450

20 07.5 -20 37 8.94 1174

$$8.55 + 1.24 + 1.205 \textcircled{2}$$

$$8.21 + 0.55 \textcircled{3}$$

G 24-9 20 12.1 +6 35 1943

38/33 — 11.81 +1.20 20 May 64 100'
 — 11.75 +1.20 4 Jun 64 100'

13.20 +1.54 +1.15 3

15.67 +0.40 -0.44 3

20704-5455 20 12 45 -54 53

12-9 144 m

3534

12.38 + 1.13021 July 29

$\text{P} \begin{matrix} 4 & 13.16 & +1.59 & +1.34 & 2 \\ 8 & 15.64 & +0.41 & -0.45 & 3 \end{matrix}$
 24-9/107 20 11.5 +6 3 2 1950

$\begin{matrix} 25 \\ 3 \end{matrix} \begin{matrix} 2 \\ 3 \end{matrix} 13.16$

15.70 +0.37 -0.45 Jun 8 62 200"

15.72 +0.42 -0.33 9

15.59 +0.41 -0.47 10

15.67

+0.40

-0.44

13.20

+1.54

+1.15

13.24

+1.52

+1.13

Jun 8 62 200"

13.23

+1.57

+1.14

9

13.14

+1.53

+1.14

10



LT 80.59
LFT

1542

3840

20 20 15

-06 30

81.13.4 h-m

20 18.7 -6 36 13.1 10.53

926-14

11.89
11.81
58.11

11.275 + 11.11 7 Oct 70
OC prok 11.11 5 Oct 14
11.285 + 11.8 30 Jun 71
11.28 + 11.095

~~14.03 + 0.55 8 Oct 70~~

(~~12.58 + 0.785 5 Oct 71~~)

18481
330

3540

+ 20 - 29

2.9

10.5
76

~~11.21 + 0.33 4 Aug 71~~

11.03

+ 0.535 21 Aug 79

17.01

+ 0.545 27 Sept 1

11.07

+ 0.55 1 Oct 71

11.07

+ 0.54 ③

20.300

-6.600

200.000

-490.000

2.900

38

0.000

0.550

0.402

-0.732

-416.230

-15.825

0.151

0.814

0.500

0.500

-1749.307

-66.507

-0.822

0.419

-0.387

-1745.857

-66.376

✓ 2020-5112-20 2220-51 06 (505)

~~Handwritten signature~~
2548

12.7 14.2 m

12.72 + 0.805 2018.79

0.

20186-0635 20 20 10 -06 30

✓ 12.1 13.7 k.m

3540

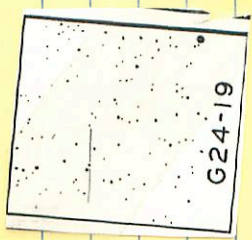
11.03 70.535 21 July 79

24-19 ✓

20 31 40 +05 46.5 11.6 12.7 h

11.50 + 1.40 + 106.5h

3561



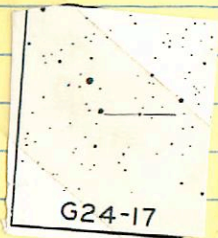
11.02 + 0.713 15 Aug 24

24-17 ✓

20 29 10

+04 30.5

11.44 +87 +45 - 5R



3557

150

RR

11.10

+0.347 15M 29

11.08

+0.343 20M 29

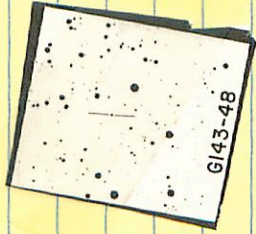
11.09

+0.345

3

143-45 ✓ 20 22 00 +10 37

3544 13.2 14.8 km



12.62 +1.146 19 Aug 74

144-29 ✓

20 41 50

+09 52.5

12.7 15.0 h-m

3523



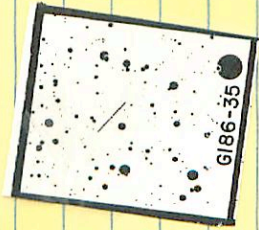
1362 +0.641 19Aug74

186-36 ✓

20 38 45 +21 55

14.7 16.2 m

3567



G186-35

13.24 +1169 19875

24-20 ✓ 20 33 40 +03 17 11.2 13.0 mm

16.96 +145 +107 R



3564

10.83 +0.999 19 Aug 74

3559

20 44 45 +10 12.5

170 15.1A

13.27 +0.335 2

13.176 +0.37 +0.37

(15)

sublimation

25-1 ✓ 20 44 45 +10 12.5 14.0 15.1 12

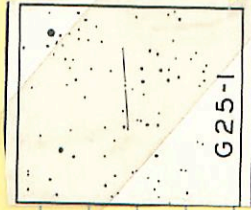
✓ 20

1334 +0.340: 13.36 +0.7 +0.7

1336 +0.320: 13 Aug 74 (Pencil) 555 -
via ~~the~~ ~~the~~

13.35 +0.7 26 July 69

13.36 +0.30 25 July 69



Wm.

Wm.

13.76 +0.86 +0.34 26 Sept 68

13.75 +0.88 +0.35 27 " "

13.76 +0.87 +0.37 28

Ashken N 1090

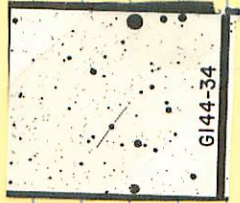
N 3050000

✓ 144-34

20 43 30 +19 41

10.4 16.7 12.5

140444



3576 A16

9.38 +0.734 15.1474

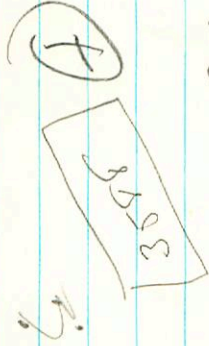
8231
80-124

20442-7324

20 47-35 -73 -17.5
~~20 443 -73 -24 18.5~~

13.2 14.3
~~64.2 60.5~~

44 42



2.53 +0.35 = 20.74
 1245 +0.367 = 85.70
 1250 +0.368
 360

20425-421 ✓ 20 44 50 -47 14.5

12.1 13.4 h.m

2552

255-500

⊕

10.80 + 0.814 20000
10.82 + 0.812 10000
10.81 + 0.813