

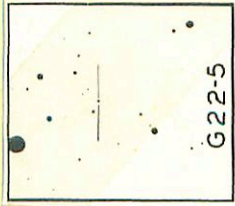
22-5 ✓

18 51 25 +03 54.5

3716

~~13-12-114-82512~~

13-204115 + 81295



622-5

12.45 +0463 18 Aug 74

V186 18 51 00 +16 33.5 10.8 12.3 MO  
~~18 50.2 +16 36 10.5 M2~~

49.7 +14 33 1950

W11324

No

184-35 10.98 10.14 +0.58

p36end 6.3 6.0"

10.15 +11.46 +11.24 15 Sept 63, 60'



2417

9.19 { +0.728 18 Aug 74

G184-35

V185

<sup>46.7</sup> 18 47 18

717

<sup>23 1450</sup> 25 9.2 1863

East

10.44 9.69 +0.68

3 July 64 100"

9.27 +1.27 +1.16

26 Aug 63 20"

W11257

9.22 +1.28 +1.22

15 Sept 63 60"

9.22 +1.25 +1.20

18 May 64 100"

(3412)

9.23 -8.34 +0.60

Black 60

(9.24 8.54 +0.67)

2 Jan 64 100"

9.18 8.34 +0.60

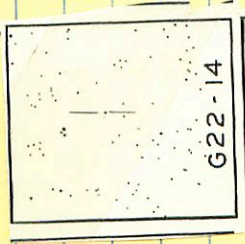
3 Jan 64 100"

22-14 ✓ 19 05 ~~05~~ tot 29

13-24 + 144 + 1185P

3480

12.03 + 106.3 (8 Aug 24)

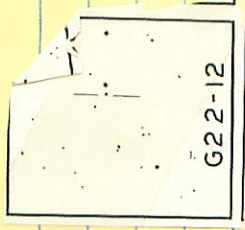


G22-12 ✓ 15 00 00 + 05 26

1066 + 107 + 102 SP

3426

504011



10.08 + 0:407 19 Aug 79

51801815

19553-4819 18 57 35 -48 17

✓

11.2 12.9 014

①

3420

Pfbrakt

9.95 + 1.004 15 June 79

✓

19065-1444 19 08 15 -14 46

13.6 149 k-mm

248 . . ⊙

B.25 -10.547 21 July 74

20215 ✓

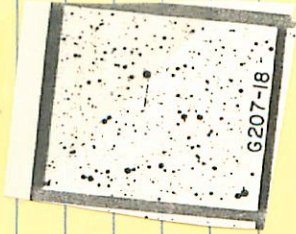
19 07 30

+26 33.5

14.8 16.1 mm

Fake

058msvd 1.2



1345 +1.433 19 Aug 74

1349 +1.86 Wain



184-45

19 06 15

+20 57.5 10.8 12.4 M

-49

19 06 20

+20 51 10.9 12.5 M

SEARCH ~~SEARCH~~



NW

9.62 +0.534 19.6 29

SE

9.61 +0.541 19.6 29

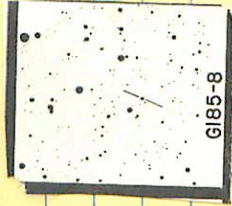
G184-48,49

185-8

19 08 20 + 22 08 -

13.7 15.3 Am

3426



12.24 + 0.546 19 Aug 74

G185-8

~~19072~~ 91916

19072 -4714 19 09 25 -47 11.5

✓

9.6 10.9 11.5

✓

6218

11, 11, 11

209

8.59 +0.535 15 June 79

(5) 11.0

19095-3907 19 11 35-39 04

✓

11.2 12.2 m

3423

11.12-4.10.15 Jun 79

19122-4225

19 14 15

42 25



14.0 15.1 R

1341 10.39220 <sup>1054</sup> 10

255014

22-21 A) 19 14 00 +02 05

B) ✓

11.2 12.3 h

3 m/s

11.8 13.1 h<sup>m</sup>



(352+407)  
+362+422

N

9.64

+0.486 19 Aug 79

S

10.37

+0.609 19 Aug 79

A 0.538 40.8

0.556 40.6

142-12 ✓ 19 17 25 +11 36

3442 14.9 16.3 km



1383 +1.18619 My 79

19202-6057 19 32 55 -62 53

John (Geo) 12.1 138 mt

3971

(X)

11.00 +0.566 11/1/80



14165 - 3707

3453

19

18

30

-37 04

~~13.4 14.09~~

(F)

12.62 11.018 10.950

12.58

1.613 20.877

18<sup>30</sup> 19<sup>47</sup> 1830<sup>47</sup> -37

✓ 19 1830<sup>47</sup> -37

✓ 7646

19 16.6 = 37 07

14 + 9 = 0.55

15165-2007

441-30

∴

13.4 14.0 g

✓

⊙

13.88 + 1.45 = 20.33

12.58 + 1.013 = 20.593

3453

✓ 23-4 19 40 55 + 3 06.1

12.82 + 1.66 + 1.34 sh

3474



11.71 + 0.560 19 Aug 79

✓ 19370-1820 ✓ 19 38 40 -18 16

11 { 13.4 15.0 mm  
1.5 { 17.5 16.5 mm

346/17

12.25 +1106 15 Aug 29

V196 19 32.8 +04 29 9.4 M10

1963

9.34 +1.39 +1.23 J1R

9.37 1.41 1.20 IR

9.36 8.45 +0.60 2 June 64 100"

9.35 8.44 +0.62 6 July 64 100"

(341)

702

19548-1237 19 56 30 -16 32.5

✓ 13.4 15.5 mm

3504

Bir 1055211295

19468-1126 ✓ 9211-87651 19 48 25 -11 21.5

12.3 14.0 m

①

386

1167 46534 21179  
52712 435.04

✓ 19418-7112 19 45 00 -71 08.5

13.8 15.2 m

④

3484

1248 + 1188 21 July 79

11.3

11.75



20013-0816 ✓ 20 02 55 -08 11

12.4 13.7 km

3514

12.01 11.26 12.11 21.76

20007-4545 20 02 45 -45 42.5

11.9 13.4 m

⊙

✓

3517

11.19 46.704 15 June 79