

140-39

18 05 50

+10 52.5

~~3357~~

12.8 B.Y. ♀

3357



G140-39

12.04 +0.410 20/27.29

18047-15/58

h.m

154-44 ✓ 18 06 25 -15 58 13.8 15.1

Ⓣ

3359 -670 -344 0.710 240

0.137 ± 004 MSNO



13.64 + 1.80 - 11.77 - 1.455 21 July 74
 11.80 + 1.458 10 July 80
 10.3 11.92 - 1.458 10 July 80

10.9

Agar

11.91 + 1.41 Weiss

V174 78-03-04 0302 50m2

9.44 +1.51 +1.22 9Apr 64 100"
9.42 +1.49 +1.24 12""

3350

140-49 ✓ 18 12 50 +08 12.5

3369 19.1 19.7 g



1327 +0.510 19.75

173-28 ✓

15 09 10

416 01.5

12.1 12.7 子

3364



11.17

40259 18Ag79

11.20

40274 18Ag79

11.15

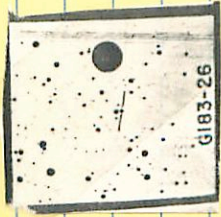
40266

3364

✓ 183-26 18 08 28 +20 01.5

13.0 14.1 h

3361



12.53 +0.384 18 Aug 24

✓ 18121 → 204 18 16 30 -22 0.3

14.1 15.4 m

Q. 3394

12.68 + 1.253 DDAY 24

✓
18123 -3343 18 14 05 -33 43

Q: 3352

13.5 15.0 m

SR

12.24 +0.573 18 Aug 74
12.22 +0.547 24 Aug 74
12.23 +0.560

✓ 173-31 18 12 50 +21 05.5

336K 13.6 15.6 mm

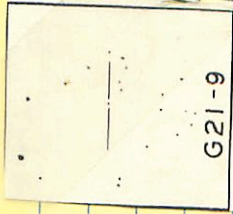


1313 +1.172-18 Aug 79

21-4

✓ 18 18 15 -05 47

3379 12.7 13.2 k



G21-9

11.46

70.550

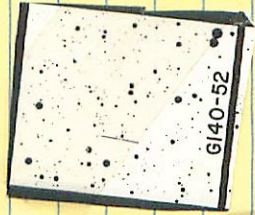
216474

140-52 ✓ 18 15 55 +04 41.5

142 14.8 65

~~3375~~

12.56 +1103 18 Aug 79



140-49 ✓ 18 15 05 +13.5405

(w) 3373

13.7² 13.54

13.7

~~13.54~~
13.54

10.6 11.9 h-m

60

4.09 - m_{II}



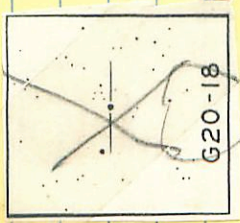
9.28 +0.677 18 Aug 79 ✓

G140-49

21-18 ✓ 18 32 20 -06 54.5

127 14.0 114

3340



109
105
104

11.35 +0.63015 June 74

4267 19307
156

✓ 18144-3323 18 21 20⁰³ -33 22

① 18.2 14.3 A

3383

ND 12.22 +0.201 79^{20/04}

⊕

→ 12.54 +0.367 95.170

W11020 18 31.2 +22 17 9.3 dm1

V803

8-90 +1.13 +1.01 155 Syt 63 60"
8-91 +1.12 +1.10 18 mg 64 cov

3342 ✓

8-90 8-90 +0.44 11015724 11
8-91 8-24 +0.41 20 km of

-177

155-26

18 25 20

-18

28

15.8+3

18 34 15

-19

44.8

146.189



Do Both

Apoll

3396



1206 + 1.06420726

12.24 + 1.0592427

12.15 + 1.06



LTT7385 ✓

$\boxed{9 \cdot 35 \cdot 30 - 32 \cdot 32.5}$ 13.4 $\frac{14.0}{g}$
~~18 33.7 - 32 34 14.1 g: 0.54~~

561-88 .6 ←
⊙

13.50 +1.19 +1.10 24 July 1965

⊙ $\boxed{12.63 +0.586 \text{ (18 Aug 74)}}$

3357

⊕

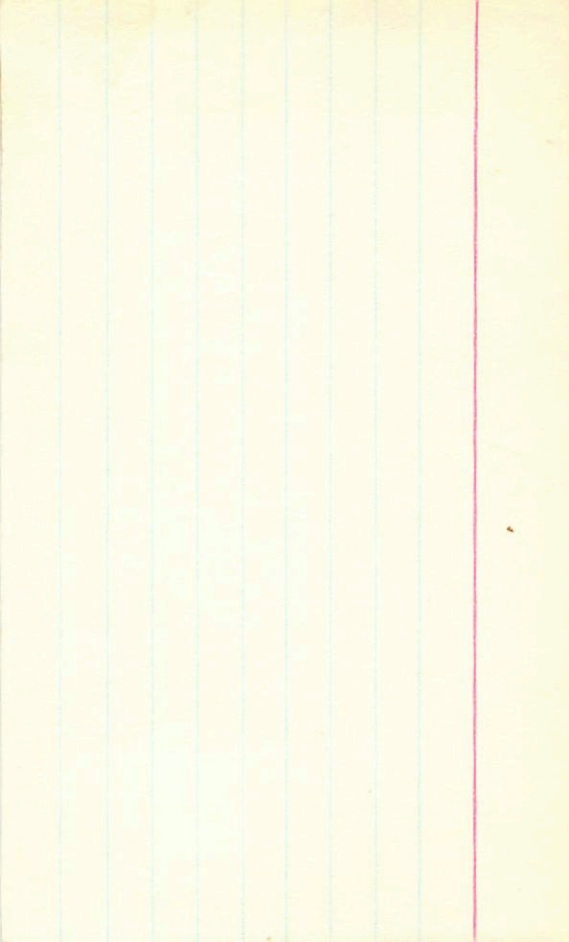
Good

→ 13.09 +0.435 11 July 80

⊙

11.19

~~+0.435 11 July 80
+0.417 18 Aug 74~~

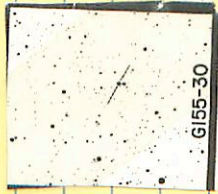


✓ 155-30

18 39 10 -10 29

11.8 13.3 Mo

3400



10.43 +0.838 15 June 29

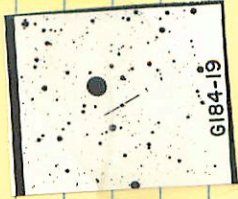
184-19 ✓ 18 40 20 +24 46

116 ml

45228 + 867

3408

6" { 12.2 + 13 ✓ d-m
146 146 m



A 10.67 + 1.386 18 Aug 79

155-29 ✓

123-520 539
070

18 37 35 -14 30.5

Agarwal ✓
3356

13.6
12.6 14.1 mm



Have: *check*

10.04	+0.972	21 July 79
10.07	+0.968	18 Aug 79
10.06	+0.970	

18412-3017

18412-3017

✓ 18 4305 -30 15

3008 ✓ 13.7 1437

3008 ✓
(+)

100B

1

RA

→ A

1336

1333

1334

384

+0.404 21 July 29

+0.367 12 July 20

+0.378 (2)

NV

— B

1373

+0.384 21 July 29

+0.369 12 July 20

✓ 19442-6140

B1

46

55

-61

38.5

→

(35.5)

13.1 14.6 m

~~WAE~~

3411

(P)

(F)

11.58

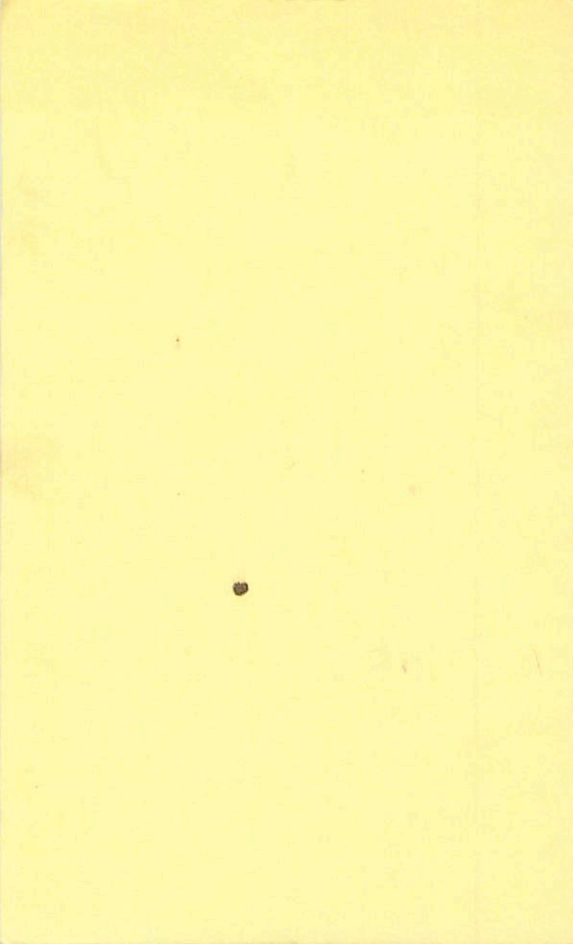
+104118 Aug 79

11.55

+10302 Aug 57

11.56

11.036



Sheet
1127
1127
1127
1127

13.2 14.2 m

343

• (•) •

• •

27 55-57 48 51 49 5-54 81

✓