

LF+13>8 17 11.1 -8 22 12.6 h 0.62

12.05 +1.61 +1.18 24.7271  
1.6 h 2.8 8.194 19.714 50.21

10.84 +1.13 15.7271  
10.72 +1.09 23.2271  
11.14 8.001  
10.78 +1.11

LF+13

Do the end note

19-20 ✓

17

17 35

+1 58.5

13.2 15.4 m

~~3274B~~

(B)

12.56 +1.230 21 July 79



✓ 17158-4523 17 18 05 -45 25.5

18.7 15.2m

3278

①

1248 10.520 11 Aug 79

17206 -32/2 17 22 30 -32 14 11.9 13.4

0 ✓ (3286) ⊕

5cm 15 Jun 76  
10.59 40.82 55.01  
10.58 40.82 55.01  
55.88 40.82 55.01

17242-2507 ✓ 17 26 05 -25 08.5

143154 b

⊕

15cc

11.53 + 1.154 20 July 79

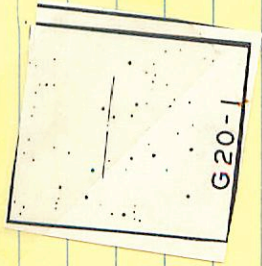
12.00 + 1.202 9 Sept 80

11.96 + 1.198

20-1 ✓ 17 24 40 +1 00

13.91 + 152 + 0.96

3284



12.43 + 0.650 21 July 79

17207-8005

✓

17

25

55

-80

09.5

12.0 13.5 m

3295

gr

10.78 +1.140 20 July 79

17283-1240

✓ 17 31 55 -72 41

13.7 15.3 m

3323

①

062

12.65 +0.899 20/4/79



17248-5787 17 27 25-57 88.5

120 18.5 mm

✓  
3244

11:40 + 10.6.75 20.6.75

17304-1547 ✓ 17 32 05 -15 48

3301

13.0 14.5 g-k

0.

12.78 +0.540 20/1/79

ok

17892-4400

17 41 20

-41 01



3317

F

13.2 14.3 hr

11.24 +1100 20 July 79

11.22 +1095 10 July 80

11.23 +1095

17352-2211 17 87 05 -27 12

✓ 11.6 12.2 kb

3210

0.

10.93 +0.822 15 Jun 79

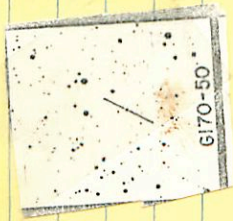
476-151 FLV

✓

170-50 17 32 50 +18 45

12.3 13.4 R

3302



6170-50

schiff 15504 01.21

170-62 ✓

17 45 15

424 39.5

8324

12.4 14.5 or



11.37 + 1.100 20574

~~17 45 30~~ 1457

G154-19 1-7 488 -12 57 15.9 + 1 0.67

17 45 30 -12 57.5

14.54

14.54 + 1.26 + 0.90 25 July 1968

2111 -8576 68705  
-9775 -5144 0047  
345 70.05



1375 + 0.542 - 21 July 72

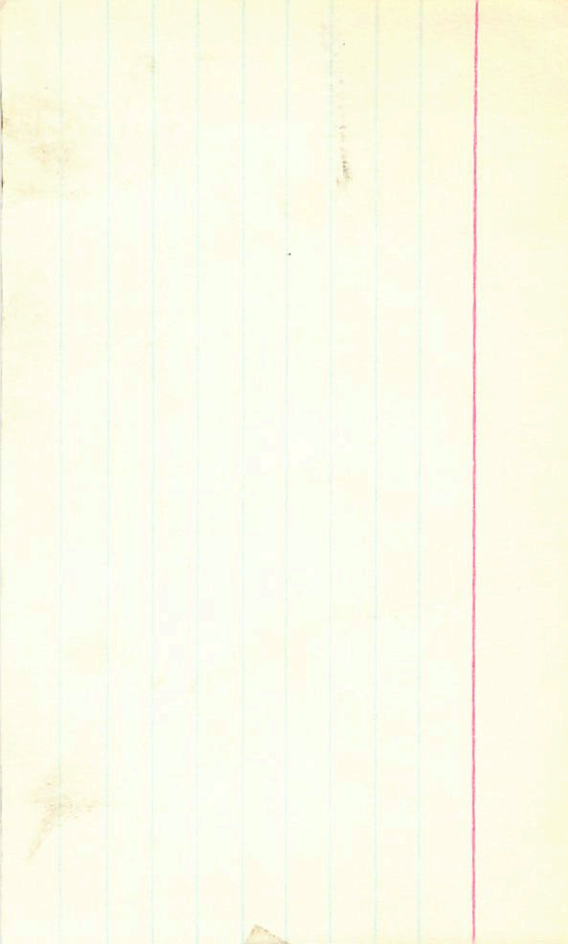
-587

1357

13023

16.15

G154-19





17 404 -1830 ✓ 17 42 05 -18 30.5

① 12.0 13.6 M<sub>2</sub>

3320

11.02 - 10.843 21 July 79

17 498 - 3437 ✓ 17 51 30 - 34 37.5

4

13.5 14.9 k

3338

13.68 + 705 + 445

⊙

②

1339 + 0.337 20 July 74

17 5308 +7 23

C-140-19 17 51.9 +7 23

150-13

179 247  
167

X ✓

(Cell)

1175	11225	65876
1171	11235	141477
1173	11233	Cell

X

6140-19

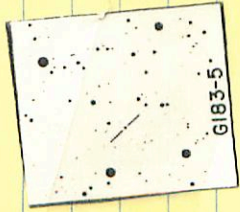


✓ 183-5 17 49 25 +23 46

12.6 14.2 m

3323

12.05 +1.187 20 Aug 79  
P  
62 Ind 68 68114



154-41 ✓

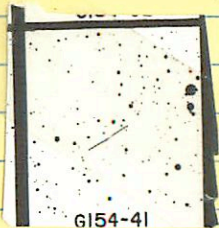
18 00 30 - 18 09

3252

14.4 - 16.3 mm

Try Again ✓

13.68 + 1.115 20 Aug 79



~~Measured  
but too faint  
NO~~

14.36 + 0.417 21 July 79

HD165225 18 03 33 -3 02 1970

21443 18 02 29 -3 01.9 1950

LFT 1389

9.38 M $\bar{V}$

G 20-22

9.43 + 1.50 + 1.23 (2)

V176

9.34 + 0.98 3/Run

G 201

3354





✓ 193-20 18 03 55 +25 17

3355 147 16.0 h-m

14.55 +06.53 20/12/74

