

66-21 ✓

14 41 00 +02 01

13.5148

h-m

2965



13.11 +1210 15 Jan 29

11.80 + 0.88 + 0.28
LTTT5864 14 43.4 -35 09 12.85 0.52

497-3

2575

11.65 + 0.33 4 May 69
11.58 + 0.34 6 Jun 69
11.62 + 0.335

124-57 ✓

14 37 25 -03 09

12.8 146 m

2457



12.26 +0.86220 Myr

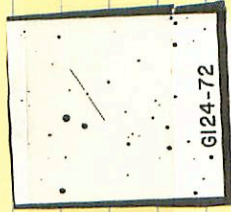
124-72

14 46 50

-03 05

10.6 14^m

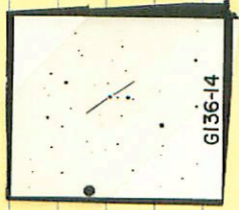
2974



12.10 10.55 4/11/074

136-14 ✓ 14 46 05 +17 10 11.5 13.0^m

2597



9.82-+0.85 / 15 Jun 79

14444-12 32 14 45 55 -12¹² 39 12.0 135^w

• 255

○

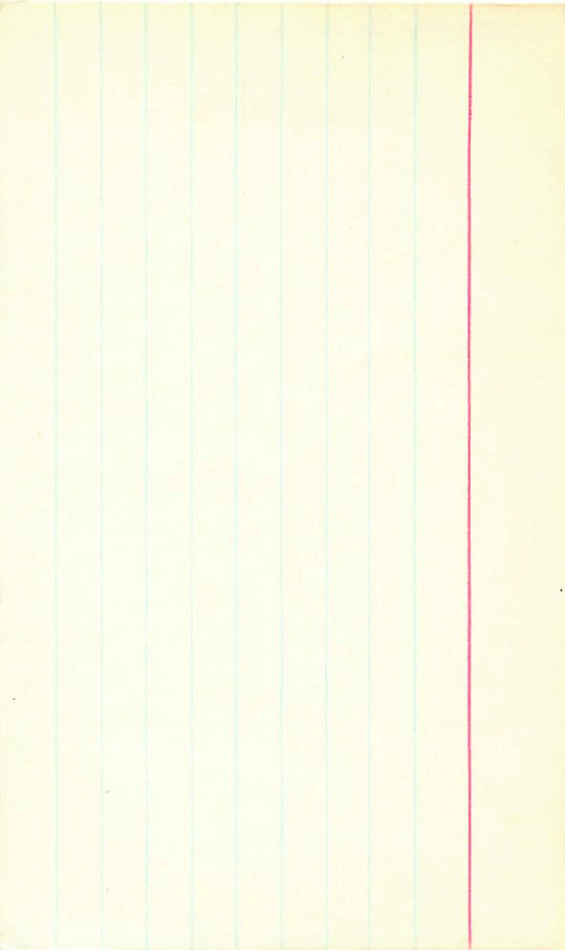
10.55 + 0.8624m²s

LTT 5896 14 48.7 -40 59 14.2 k 0.54

406-55

2958

Chart 13.36 + 1.39 - 3m on 68



14487-4058 ✓

14 50 30 -41 06

12.14.13

2498

Dr. Hunt

12.14 10.860 47m 74

124-81

14

50

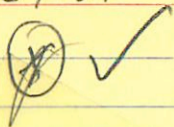
10

-01

27

13.1

15.0



2958

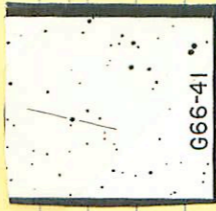


12.75 +1.117 15 Jan 79
 12.76 +1.115 11 Feb 80
 12.76 +1.116



66-41 ✓

14 53 55 +10 02 0.9 120^{hr}
11.31 1.40 1.11



2464

10.25 +0.576 4/10/74

14506 - 1123 ✓ 14 52 10 -11 30 13.1 14.6^{mm}

GUS-V off card are right
there is not

loop ok

2953

1243

+0.4692947

1239

+0.46941079

1246

+0.47315752

1243

+0.4703

14507-1535

14 52 15

~15

42

13.6

15.3

ml

✓

4554

(+) (+)

12.80

+0.836

4 Mar 24

12.97

+0.835

16 Mar 22

12.99

+0.836

(2)

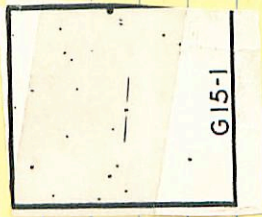
h-m

11.7 13.0

15 00 18 17 14.5

3012

11.54 11.59 16 Jun 74



G15-1

G15-1 ✓

G136-47 ✓

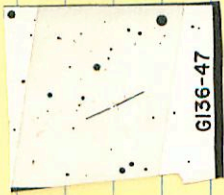
14585 +1442

14 59 50

+14 345

17.4 15.0
Rm

3017



14.54 +0.615 15 June 79

G136-39 ✓

14550 +15 11 14 56 25 +15 04 13.5 15.3 m

19

3005 ✓

10



B30 +1.197 15 Jan 74

V885 15-07-33 +24 09 9.3 128/943

+82 -45 -5

9.31 +1.12 - +0.92 9/17/64 100%

9.27 +1.02 +0.96 12/24/64

9.34 8.83 +0.40 / 10/24/64 100%

9.32 8.76 +0.40 " " " "

~~15021-2055~~
~~15021-2055~~
~~15021-2055~~

15 03 50 -21 02.5 13.1 15.2 m

15021-2055 ✓

3022

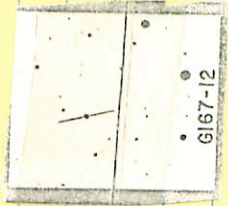
0.

13.10 + 1326 10 June 74

✓
162-12

15 00 45 +24 05 119 130 4p

3015



14/10/2012 11:15 AM

11.83 +0.5115 Jan 29

✓ 15 145 -2453 15 16 15 -25 00 141 15.6^m

3050

13.61 46235.94 PD

15065 -1946

15

08

10

-19

53

109

122

h-m

✓

3029

(7)

(7)

10.77 +0.505 29 Apr 79

10.80 +0.494 17 Jun 79

10.77 0.502 15 Aug 79

10.79 ~~70.494~~ (7)

+0.500 (2)

136-64 ✓ 15 08 10 +15 17 12.6 14.1 ²⁰⁰

3027



12.25 +0.9315 June 79

151-45 3050 15 17 50 -12 40 14.5 +3
9.5k.

My m₁ m₂ m₃ m₄ m₅ m₆ m₇ m₈ m₉ m₁₀ m₁₁ m₁₂ m₁₃ m₁₄ m₁₅ m₁₆ m₁₇ m₁₈ m₁₉ m₂₀ m₂₁ m₂₂ m₂₃ m₂₄ m₂₅ m₂₆ m₂₇ m₂₈ m₂₉ m₃₀ m₃₁ m₃₂ m₃₃ m₃₄ m₃₅ m₃₆ m₃₇ m₃₈ m₃₉ m₄₀ m₄₁ m₄₂ m₄₃ m₄₄ m₄₅ m₄₆ m₄₇ m₄₈ m₄₉ m₅₀ m₅₁ m₅₂ m₅₃ m₅₄ m₅₅ m₅₆ m₅₇ m₅₈ m₅₉ m₆₀ m₆₁ m₆₂ m₆₃ m₆₄ m₆₅ m₆₆ m₆₇ m₆₈ m₆₉ m₇₀ m₇₁ m₇₂ m₇₃ m₇₄ m₇₅ m₇₆ m₇₇ m₇₈ m₇₉ m₈₀ m₈₁ m₈₂ m₈₃ m₈₄ m₈₅ m₈₆ m₈₇ m₈₈ m₈₉ m₉₀ m₉₁ m₉₂ m₉₃ m₉₄ m₉₅ m₉₆ m₉₇ m₉₈ m₉₉ m₁₀₀

low 2250
585 - m₁
585 - 545 -

1285 +152 +1065 (m₁ to m₂₅)
13,000

Alphabet Hill 11:41
11:46
11:51
12:00
12:05
12:10
12:15
12:20
12:25
12:30
12:35
12:40
12:45
12:50
12:55
13:00