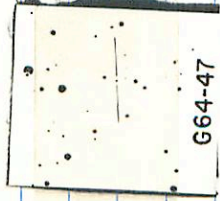


64-47
2863

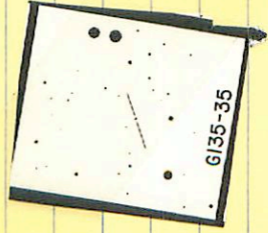
14 06 40 04 01.5 130 150
Part



664-47

B5-35 ✓ 14 16 40 +21 0.3 ^{to-m} 12.4 13.7

~~2548~~



12.23 +1.008 20 Apr 74

65-35 ✓

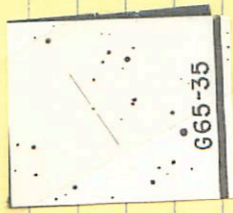
14 11 30

710

17.5

13.3 15.1^m

2898 Check



5

B11 +1013 15 Jun 79

14066 -3042 ✓ 14 08 15 30 50

11.3 13.4^m

2890

⊙

π(0)

217
472

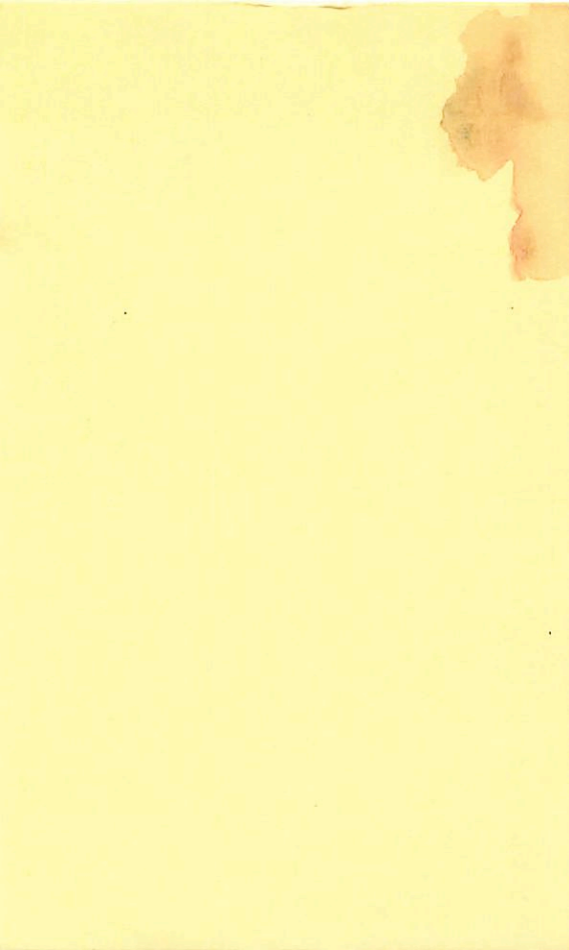
10.80 +0.766 406074

✓ 14203 -22 03 ✓ 14 21 55 -22 11 13.7 160^m

① . . 2406

. . . ⊕

1338 +1318 47m14
13.44 +1.324 16m45r
13.41 ~~1.321~~ ②



124-29 ✓ 14 21 20 -07 11 126 35

2404

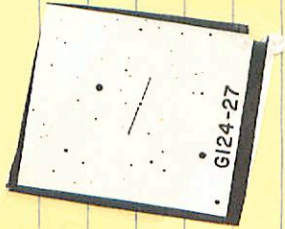


11.61 +0.587411014

~~14786-0753~~ 14 20 10 -01 01 12.0 13.9^m

124-27 ✓

2899



11.76 40.9985411029

14215-2031 ✓ 14 23 05 -20 39

10.7 14.7

0

2511

+

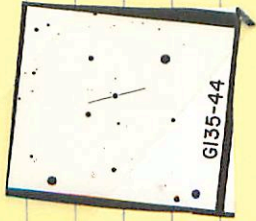
11.58 +0.550 4711074
12120 +0.504 15015
12.00 70.535 (2)

135-44 ✓

14 2, 55 718 06

^{4.00} 11.5 13.2

2506



11.35 to 55020474

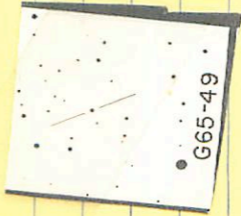
65-49

14 23 50 + 0859

^m 11.4.130

12.26-1163+1.23

2413



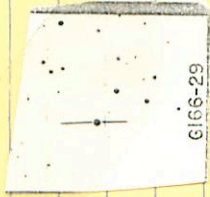
10.90 + 1.0923 Mar 14

1166-24 ✓

14 26 50 +23 56

10.7 12.2^{no}

2418



10.14

+0.491 3M574

14275 ✓ 2350 14 29 05 -23 57.5

m

19.3 16.4

2525

0

a

1368 + 1.308 77074

14228 -2002

✓ 14 24 20 -20 10

14.1-16.2
m

⊙

2476

●

1316 +1283 9m74

105-61 ✓ 14 31 35 +13 5/ 120150^m



2937

B.04 +0.761 370074

14283-1204 14 29 55 -12 12 ^{MY} 11.6 133

✓

✓
rehe

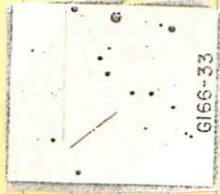
10.55 +1.1785 4/11/079

166-33

✓ 14 2905 +29 40

13.3 150^m

2528



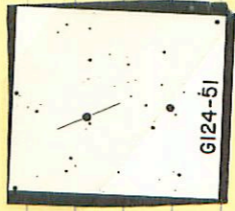
G166-33

13.05 +1348 371079

124-51 ✓ 14 32 30 -09 50

R.M. 110 113

2440



978 40.530 113
14
March

14307-1813

✓ 14

32 20

-18 20

12.9.16.80
m

2434

①

12.90 + 1182 - 477779

14316 -1219 14 33 10 -12 26

MY
10.9 12.2

2946

①

⊕

⊕

9.82 129 NW

9.77 1.012 29 NW

1:307

9.82 +1.307 1 MW

9.82 +1.289 16 NW

9.82 ~~+1.307~~ ⊕

1.297 ②

66-10

14 34 20 + 1005

2444
12.6 1 1/2 2

Spade

✓



12.15 + 1069 20 20 75

66-18

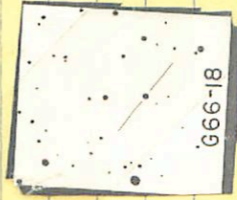
14 37 10 -00 48

124 13.5



2956

Chubb



G66-18

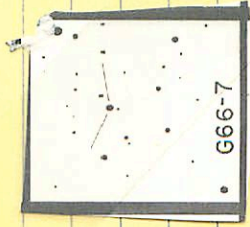
12-62- +0.378 20 Apr 55

G6-7 ✓ 14 33 15 +12 40

h.m
10.8 12.1

2444

10.7.9 + 1.10 + 1.09



10.13 +0.414 320719