

13209 - 2539

13

22 30

- 25

48.5 (2.4.14.9)

mm

mm

2529

⊕

1143 + 1.229 25Apr

1147 + 1.219 22Mar

1149 + 1.240 15Apr

1146
1147
1.229

1.229

B216 -33 00 13 23 15 -33 09

14.1 14.4^m

•
•
○

2732

13.6.2 + 1/113 20029

164-71 ✓ 13 22 35 +29 20.5 ¹⁰⁰ Ground
8.7 10.2

2728

106

7.98 +0.523 1 Mar 79

V301 AB 13 219 +24 25 8-9 dno 1983

8.96 +8.15 - +0.59 122641000
9.00 8.11 +0.60 1182641000
7.95 +5.73 122641000

8.85 +1.35 +1.44 912641000
8.91 +1.32 +1.21 2526451000
8.90 +1.33 +1.21 272641000

13245 -30 55 ✓ 13 26 18 -31 04.5
13.1 14.9^m

2734

0

⊕⊕

12.12 +1267 28Apr

12.11 +1244 32Apr

12.16 +1243 15Apr

12.13 ~~1248~~ ⊕

149-88 ✓

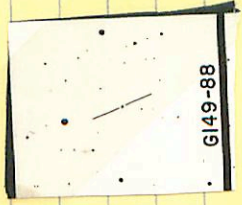
13 24 10

+22 58.5

10T 14E

h. m.

2783



13.56 +0.594 17m14

14-56 ✓

13 27 35 -01 55

2m
120/55

WCT



7

12.84 +0.841 Min

60

13 281 -32 22 ✓

13 29 45 -32 31

Prohogan

2544
(X)

11.4 12.7 h.m

in good being

that may be credited

James J.

10.60	+10.618	3 Mar 79
10.62	+10.615	11 Mar 81
<u>10.61</u>	<u>10.616</u>	

13274-5148

1329

75

51

57

m

134-149

(2743)

North of Lake
~~Thompson~~
~~Johnston~~



George Keith LC11

5

1158 + 1109 = 2267

9114 + 2811 = 11925

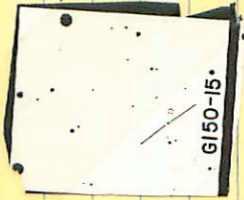
6
 9
 ' . .
 ' . .
 ' . .
 ' . .

150-15 ✓

13 33 25 +27 23

km
141154

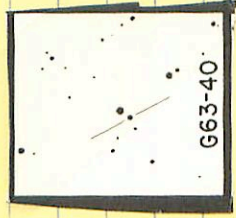
2761



B.52 +0.55032m74

63-40 ✓ 13 35 50 +19 12 9-6
11.7 12.6

2765



11.46 +0.323 3hr 79

13336-2144



1335

15-2153

14.2 16.5^m

2764

①

13.76 + 1253 977074

63-43

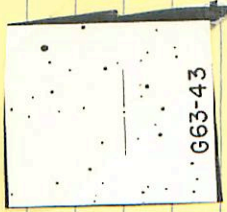
✓ 13 36 20

+15

38

13.5^m 15.2

2767



13.04 +1.168 32079

663-43

150-25 ✓

13 37 40

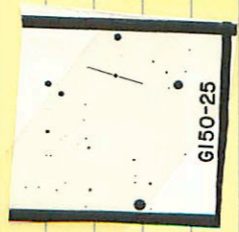
+05 56

12.13.1

880
544

2771

599
056
4.3



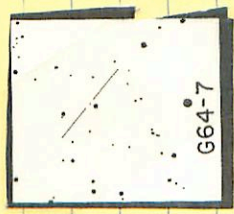
157

11.27 +1.065 4m 7g

64-7 ✓

13 37 20 -02 46 M3 16-6 *mm*

2770



1384 +1217 3m24

5

62-60 ✓

13 39 05 -04 05

36-11.0¹²⁵

102 246
115V /

2.1 7.1 6.2

2773

-388 + 893 V
-343 + 455 C II
-345

1305-0356

8.70 +0.642 47Mar74

13380 + 12 29 ✓

13 34 25

+ 12

19.5

13.6 15.1

6279

1 →

○

○ X

7.
○ NI

12.09

+ 0.266 4 May

NI

→ B42 + 1.196 11 May

13895 -1545 ✓ 13 41 05 -15 54

12.5-5.21

2783

(+) (+)

186 +1344 26479

188 +1312 30079

182 +1296 16453

189 6811
1314 (3)

18.11

13 492 -17 43 ✓ 13 44 45 -17 51 11.5 130^m

2744

②

⊕

10.44 + 1.152 = 3.1074
10.54 + 1.193 = 16.737
10.44 + 1.172 = ②

62-66 ✓ 13 43 15 704 59 10.6 11.9

12-111

2757



10.58 70.676 YMA¹⁴