

credit 4"

11 23 45 -61 32 73-86 127

11225-6122 ✓

843 Comp

2402

There can be  
Apt 11

274 +0.590 (Mar 74)

(R) 2402

278 +0.649 (Mar 74)

120-57

11 30 40

+22 47

10.3

<sup>m1</sup>  
1.18

10.28 1.53



2422

83 wanden

G120-57

9.25 +0.79 7 302879

Handwritten signature

w

843 22 817  
101

54

94

11322 - 2386    11 33 35 - 23 45    103 121<sup>nm</sup>

✓ 2427

(4)

10.17 + 0.79221474  
10.17 + 0.795251854  
10.17 + 0.795251854

11353-4820

11

36

40

-48

30

10.8

11.2

✓

2483

(R)

154 car  
res

10.07

+0.516 21279

10.01

~~0.516~~ 21279

10.06

0.528 (2)

56-50

11

40

00

+14

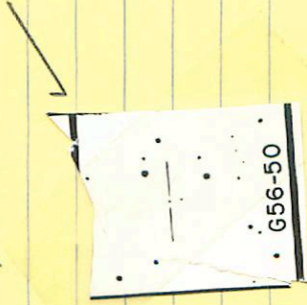
31

144

162

mm

24th E



1464 +0.108(212679

G-10-39 11 37 20 403 21 11.7 12.8 140

✓ 2484



G10-39

10-39

10.6.66 + D. 6.53. 2171074

10-42

11

89

35

+04 01

12.7

136

9-62

✓

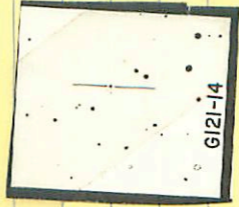


2470

12.72 +0.385 212879

121-14 ✓ 11 43 40 +27 02 133 144 <sup>to-m</sup>

2457



12.99 70.65 V2 Ma79



11446-6529A 11 45 55 -65 38 / 10.7 12.2<sup>m</sup>  
B 17" (11.0 12.5<sup>m</sup>)

✓

11037 2456/7

10.56 40.345 212874

252

10.25 40.324 212874

485-135  
495-145 011

10-45 ✓ 11 42 40 402 08 13.0 146<sup>m</sup>

2448



12.34 +1.100 11/10/74

11532 -18 38 11 54 35 -18 47 13.9 15.5<sup>m</sup>

• • 2476

① ✓

12.81 1.250 212679

11524 -3540

11

53

55

-35

50

13.1.14.4

2474

←

Child dr

2474

50  
5

Capital

only paid

but when

No daughter

born ✓

Drumman

(K)

12.66 + 0.526 20 Apr 55

12.70 + 0.537 11 Mar 51

12.68 + 0.532

11 507-0706 11 52 10 -07 15

11.6 12.3

✓ (a) . . . (a)

OK HC

10.72 + 1.06021224

12009 → 12 02 20 - 16 23 → 14.7 16.3  
 12012 → 12 02 45 - 16 25 2540 → 110 12.1  
 11.5  
 12.5

✓ A  
 ABC → 1362 - +1.126 10mms  
~~ABC~~

do 2504  
 2504  
 1002 + 0.509 2012x  
 949 + 0.81 15 June 79  
 10.00 10.505

121-43

✓

12 00 15

+23 03

12.1 13.8<sup>n</sup>



2455

11.97 +0.719 2Mar74

12031-2425 ✓ 12 04 35 -24 34.5

130 141 h

① of bond one dr (board dr)

② this is it =

12.74  $\rightarrow$   $\boxed{2511}$   $\oplus$

12.74 + 0.443 = 12.79

12.78 + 0.425 = 10.205

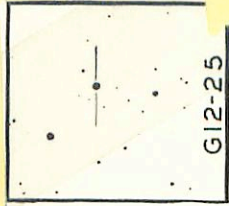
12.74 + 0.434



12-25 ✓

12 12 20 + 16 49 11.1 12.2 <sup>hr</sup>

2527



10.88 + 0.807 11.11

W041435

LF7882

12 07.0 +8 40

1221 - 11

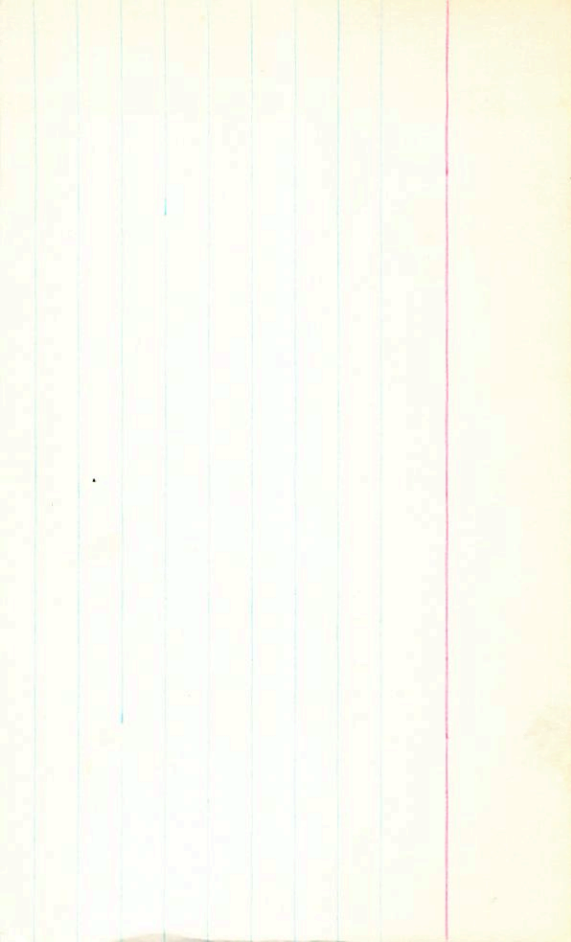
G11-42

12

1320 +1.47 +1.12 512

161 278 63

170 272



11-42 ✓ 12 08 30 +08 30 123 139<sup>my</sup>

2518



12.08 +0.954 / Mar 79

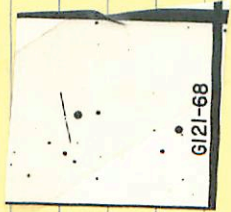
12-15 ✓

12 12 55

+29 42

14.6.16.1 am

FRST



13.40 +1.182 / Mar 74