

09235-0757 ✓ 09 24 58 -08 045 11.6 12.7<sup>hr</sup>

G161-30

⊙

⊕

2142

—

⊕

11.64 + 0.599 4289

⊕ 11.19 + 0.630 2244

11.65 + 0.638 2914

11.64 + 0.634 ②

41-37 ✓ 05 24 25 +18 46 12.5 14.2 M3

M3



924

12.25 +0.921 (M3)

~~2127~~ ✓ 09 21 15 -66 24 12.9 143<sup>m</sup>

09207-6617

⊕  
2127

976

NO

10.00 +0.576 4479

→ 11.68 +0.8363049

-400 ~~3299~~

LTT 3547

9

~~379~~

~~40250~~

124 m

9 39 00 -40 58.5

0.25 305

$\pi = 0.91$

10.74 +1.505 +1.15 2nd dec 70  
 10.71 +1.52 +1.185 5 pm 71  
 10.72 +1.51 +1.17

9.17 +1.0633987  
 9.48 +1.06 3 pm 71  
 9.40 +1.06 23 pm 71  
 9.48 +1.06 1 (3)

⊕

21616

5.1

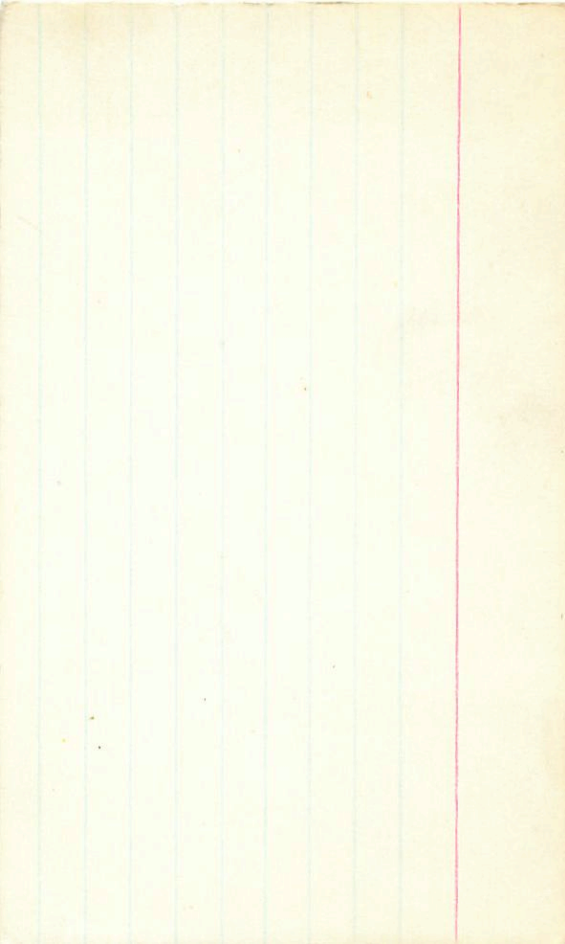
5.1

8.39

2.2

5.75

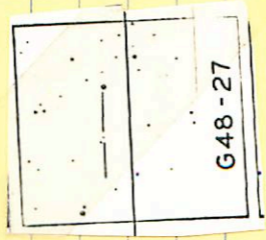
5.27



48-27

09 39 00 +08 12 140 158

2165



✓

14.006 + 0.995 (21879

09290-1402 ✓ 09 30 25 -14 09.5 14.3 15.6 <sup>to-m</sup>

~~6 9 2 2 1 2~~ (7)

2152

→

13.74 +0.491 4229  
~~13.26 +0.53024 4229~~  
13.75 +0.510 (2)

(8)

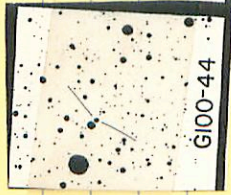
14.48 +0.254 4229

100-44 05 51 55 +24 16

11.2.12.7 M1

✓

1754



9.71 +0.875 202479



40887

5 59 14 - 31 02

ROY

AB sm=0.5  
2.1"

UNSURE ✓

AB - 6 sm = 0 2"

① 12" omit

7.19 + 0.52 13 2020

294.

468

831

76

05514-5508 ✓ 05 52 00 -55 07 11.5 13.3 mm

①

④

1793

11.52-10.903 8.00 X

11.50 10.572 2.00 Y

11.51 10.918 ②



98-46

~~06 08 17 1/2~~  
~~06 08 45~~

+26 34

124 15.1

M3

✓  
Charlie Wood

14-24

06 07 25 +26 35.5

585



G98-46

12.12 +0889 2 Mar 74

66002 ✓  
060024

-2020

06

01

30

-20

20

122150

m

⊙

⊕

190

6811

6811

0917

2017

5511

5511

5417

2017

⊖ 2511

5511

G98-38

06 02 35 +26 09

MS  
138-151

✓

1814



13.38 +1076202879

G98-38

44-20



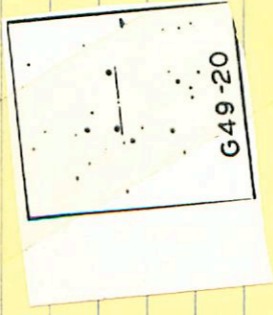
09 39 50

+22 07.5

13.1-14.2

20

2171



12.58 +1372-17079

42-17

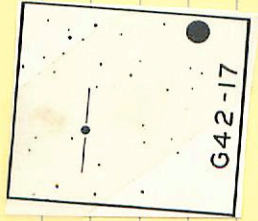
✓

09 40 05

+13 18.5

10.3 D.O. Mr

2173



G42-17

9.24 +10.505 212879





# 48-30 09 39 45 -00 45 136 15.1<sup>m</sup>

1366 +1.196 202879

49-23 ✓ 09 42 45 +27 04 11.3 129 m

114 1500  
196 1096  
1595 1096 1096 1096

2181



10.68 +1125 17m79

09403-1900 ✓ 09 41 40 -19 08 115 133<sup>th</sup>

207 F

1.007

10.77 + 1.007 47679

10.75 + 1.025 29 4979

10.76 1.016

42-19 09 43 50 +09 04 13.6 15.2<sup>m</sup>

2184 ✓



1328 +1110 218679

179 86140

LTT 3643 10.4 140 0.60 3170

W 215

9 53 ~~548~~ -58 38 505 N2E

2208

9.02 +0.96 - 6m  
9.08 +0.98 +0.65 17mg23

8.61 +0.35 21mg23



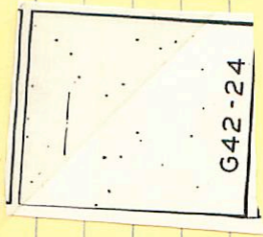
42-24



09 52 41 + 21 02

13.2 15.0<sup>m</sup>

part



G42-24

12.31 + 1.434 212674

~~094340~~  
<sup>161-</sup>

09 45 08

- 4 -

13.11.54

09436-0412

✓

2184

(+)

214 125

12.54 + 1318 20274

12.54 + 1317 29474

12.54 + 1318



-4508627 ✓  
09566-4611

095740-4619 103121MS

(A)

22B

ms  
light

992 +11804779

991 7171 2979

992 1176 (2)

875

8.8

3