

08102-8305 08 07 10 - 83 10 R0141^m



growth. 02014 1137

u.c.p.m. 1
Z
u.c.p.m.

~~u.c.p.m. 1137~~

40-3

✓

8 03 10 +15 06

14.0 15.8

m

1977

13.46 + 1.257 2 March 79

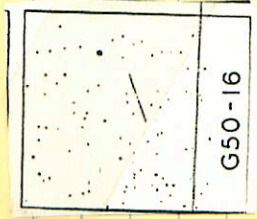
(50-16)

✓

P 01 20 + 3 24

12.9 140

18 mm 45"



1972

A

12.32 + 168-2084

08 155-3417 08 16 40 -34 23 12.2 13.7 m

①

④

1557

1123 +0.736 1 Jun 79
1123 +0.733 9 Jun 81
1123 +0.734

85148-7600 051410-7605

1452
+

11804 + 0231
10

10.62 + 1027
10.61 + 1039
10.62 + 1033

1608 + 8071
10000

12.2 10.5

15 Jun 79

V20 AB

8 10.8 -18 45 1820

2178

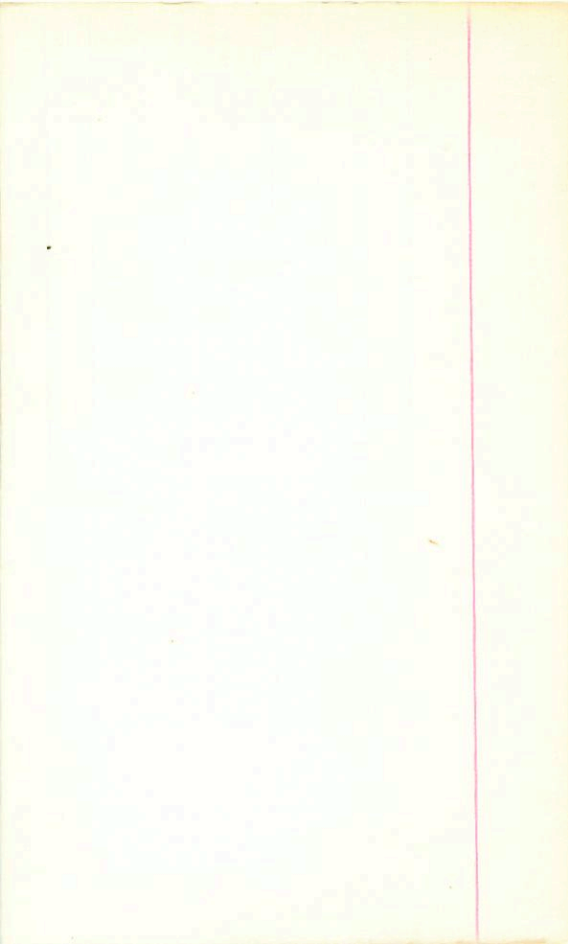
8 11 26 -13 48

238405

AD56664

9.38 +1375 +1.245 ②

8.41 +0.66 ③



08290 -1020

0830 25

-10

25

14.4 -15.9 ^m

Carl's

~~1200 ft~~ (X) (X)

2024

1324 +1.449 9 feet

1327 +1.435 20 feet

13.25 11.441 (2)

08 25

08 26 30

-44 55

12.4 13.9^{mm}

08257-4450

~~check out on~~ ✓

④

②

2010

10.47 + 11.60 252874

10.52 + 11.58 94481

10.50 + 11.59

1947

08

27

07

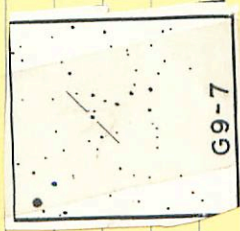
13

13

9-6
133 143

9-7

up per the



5-9-62 62014 + 48-11

V24 8-46-21 tol ¹⁹⁶³ 38 9.8 M10

10.39 9.53 +0.60 10 Apr 44 100"
10.34 9.56 +0.60 11 " " "

10.37 +1.30 +1.22 1 Mar 65 100"
10.34 +1.27 +1.19 2

DR 420-1013 08 43 25 -10 19.5 140 m

~~Handwritten signature~~

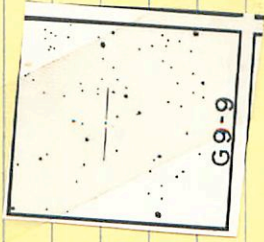
2046

⊕ ⊕

12.60 +1.221 9/10/11
12.41 +1.236 2/2/14
Total +1.228 ⊕

9-9 08 32 15 +18 36.0 13.9 15.4^m

6509 ✓



13.18 +1225 202879

08 532-2341 ✓ 08 54 25 -23 47.5

7m
13315.1

• •
○

2071 ⊕

12.24 +1.377 4879

12.31 +1.364 29484

12.30 1.373

09552-7124 08 55 15 -71 31 14.3 15.8^m

0

2073

main 12.58 +1253 12m79

09517-1256 AB 08 53.05 -13.02

②¹¹ (12.0 -13.8 M₃
13.5 14.3 m

2069/70 ?

10.6.61 +1.083 / 7m 07 79

SA 9

12.6-12.5 2.4 77° 08 45.2 -12 53.9 14.0

53.9 -13.15 2080

8 57 31 +20 37.5

V261 8 56.4 +20 41 1943 8.9 dms

9.29 8.71 +0.46 P27.64 100"

9.22 8.49 +0.50 25 Mar 44 60"

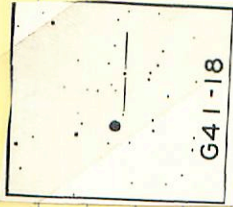
9.27 +1.11 +1.01 1 Mar 48 100"

(+101)

41-18

69 01 10 +08 33

11.1 12.1¹²



10.56 +100 6 215879

~~2454~~ ✓

08 59 50 - 18 37

12.7 148^m

08565-1830

2079

⊕

12.86 41070 06074

12.84 1078 89184

12.85

⊕ 12.01

09110 ✓ 3135 09 12 15 -31 42 13.6 16.1

• • • 2116

⊕

12.53 + 1150 42474

12.54 + 1150 22474

$\frac{12.54}{12.85} \frac{22474}{41150}$

~~2#6~~ ✓ 09 06 10 -22 03.5

09048-2156

^{10-m}
140153

2106

①

④

12.57 +1.431 14779

12.57 +1.348 22194

12.57 +1.415 ②

G46-30



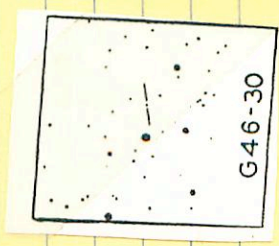
09 13 00 + 00

24

13.5 148

~~Check~~

2119



11.97 +10.55 212479

46-35 09 20 55 +02 17 12.6 14.1^m

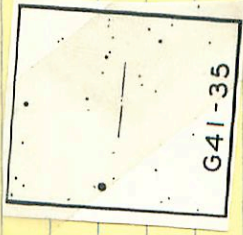
✓

2164



12.30 +0.525 202879

41-35 ✓ 09 21 50 +19 57 13.9 15.7^m



13.57 40.771 1 Mar 79

G47-31

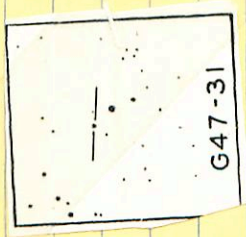


09 14 50

+24 255

12.3

hr
134



2121

1115 +0.504 1 Mar 74