

06233 ✓ -2647 062430 -2648 12.8 14.8 mm

(LH 81)

for [unclear]

1155	55.11
1475	11.57
2950	<u>11.58</u>
5425	86.14
8350	86.14
	10.984 (2)

06 486 - 0907 ✓ 06 50 00 - 09 09 13.8 14.9 k

①

1893 ✓

11.58 + 1.134 5.475

~~12.03~~ + 1.120 2.110.87

1169 FF.127 ②

06 482 -09 35 06 49 30 -09 37 120 13.5

1872

✓ (7)

④

11.21 +0.82/ 52679

11.22 508.04

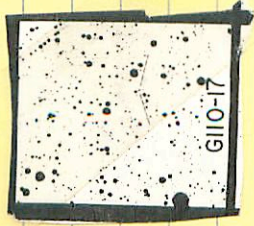
11.22 70.50

G110-17

6 46 05 +14 22

13.8 15.5 m

1491



12.80 +0.873 202412

12.84 +0.900 202412

12.84 +0.986 @

10.7 ^{MA} 12.3

42 24 -14 55 07 09 55

-1401750 ✓ 05/10/11

07086-14 22

2031

⊙

9.15 +0.586 5274

BPM 72198

640 1750 RPM

6 58 20 -10 14

LFT 503

6 57.0 -10 12

136 151 nm

L814-1

①

⊕

NO

"5"
0.5

18811

Do

12.88 71119 8 Jan

5.5
etc

150

06569✓ -1011 0658 15 -10.13.5 13.6 15.1 m

1881

① } 10" from
shrub *Halimolobos*
5' tall
not clipped

284 + 1.0.54 15.4.88

12.87 + 1.191 5.4.29
12.88 + 1.119 8 Jan 01

12.88 + 1.125 ②

07260 -1842

07 27

~~18~~ 45.5

Spencer
W. J. ...

✓

X

^{to-m}
135 14E

12-02 \$1.399 20189

→ 11-99 \$1.340 8/ans

~~12-01 \$1.342~~

(1518)

(+)

(+)

(NO)

1350 \$0.493 302479

07215 -8255 09th 1805

12.1.12.6^m

07 15 05 -82 55

✓

773

16.66 + 18804 (217679)

5051

07115-6701 071130 -67.05^{mm} 10.8-12.4

~~Checkbook~~ AR

①

④

1904

10.23 +0.718 (Mar 24)

10.22 +0.713 (Jan 81)

10.22 +0.715

112-27 ✓ 07 33 10 +1 02.5 12.5 14.4

1928



10.71 +1.050 Feb 29
10.77 +1.015 Jan 26
10.74 +1.022

✓

7 33 00 +1 03

→ 20 177 6

C-112-27

79

31.7 +1 06

14.9 73

1077 +1.015 21mm76



L24 7 32.1 -42 49 13.9 DA

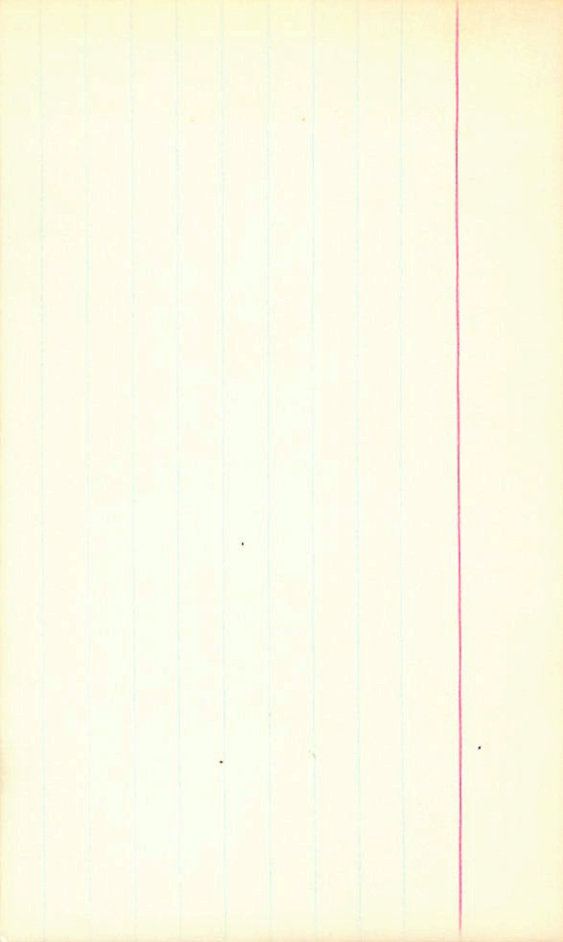
2884LTI

1927

L384-24

0.66 50

1416 +0.11 -0.66 17 Oct 66



07304-3600 ✓ 07 31 30 -36 04

13.1 142 k

①

1524

13.53 +0.475 sätg

07365-2106 07 37 45 -21 10

11.8 13.2^m

✓ . .

.

①

1925

10.44 +1.085 202179

G-98-43

13.1 14E
M4

07 36 35 +28 20

*

1933

12-68 +0.968 202879



07348-5148 ✓

117 132th

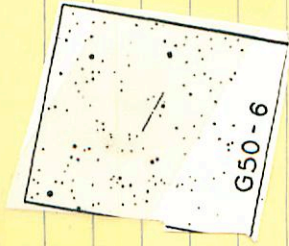
19320 073535 -5152

(0)

1118 + 1112 52179

G-50-6) ✓ 7 50 40 + 0.5 36.5 14.3 16.0 m

1950



13.28 + 1.46 28.50 19.0

50-5

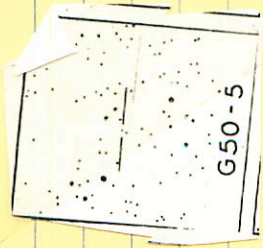
02 48 15

+19 33

12.4 15.2

h-m

my ~~Study~~ Dr ✓



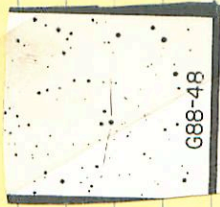
12.82 +1072-202674



88-48 ✓ 07 42 00 +18 17

h-24
10.7 12.0

KA 0719 481
20.2 481
1692



10.26 +0.866 58879

G88-48

~~590~~ HC 3136 / 07 57 30 -60 14.5 / dm 5.5 6.3
61 750 10.9 120 lb

07 569 -60 10 A 5.58

9.93 + 1.345 + 4.113 (2)

Master 230 90 2
100000

558 (14)

1960

4-K8 of CO+ 158

A 446 layer

(14) 158

07 555 -45 30 07 56 20 -45 34.5 13.1 12.6

①

NO

1541

⊕

11.16 +0.577 52879
11.12 +0.522 92850
11.14 +0.577

07 529 -29 13

134 14.7

07 54 00 -29 17

8.0
0.8
8.8



1955 AD

11.26

64200 J24.14

4-24