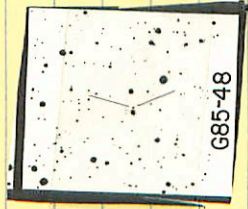


85-48 05 09 45 +18 36.5 13.6 15.2 nm

X



8

12.71 +1238 212679

12.75 +1.225 F. G. G. X

12.73 +1.231

171 201 6

5 09 30 +18 37

5 08.0 +18 34 15.4 -2

685-48 ✓

12.75 +1225 276:76



G85-48

05127-0724 ✓

05

14

05

-7

22

105100.

8 . . .

9 . . . ① . . .

N 1749

10.48 + 0808 8.48

05135-3121 ✓ 05 18 00 -31 19 12.0 13.6 m

1748



982 ✓

10.94 70.582 8.1618

13.18 + 115 + 0.75

40

17 60 - 53 42

1751
LTT 2236 5

12.60²⁶⁶ + 0.472

12.87 + 0.44

12.81 + 0.47

~~12.563~~ + 0.54

12.84

12.72

40 (66)

22 Oct 83

17 Dec 1968

19 Nov 68

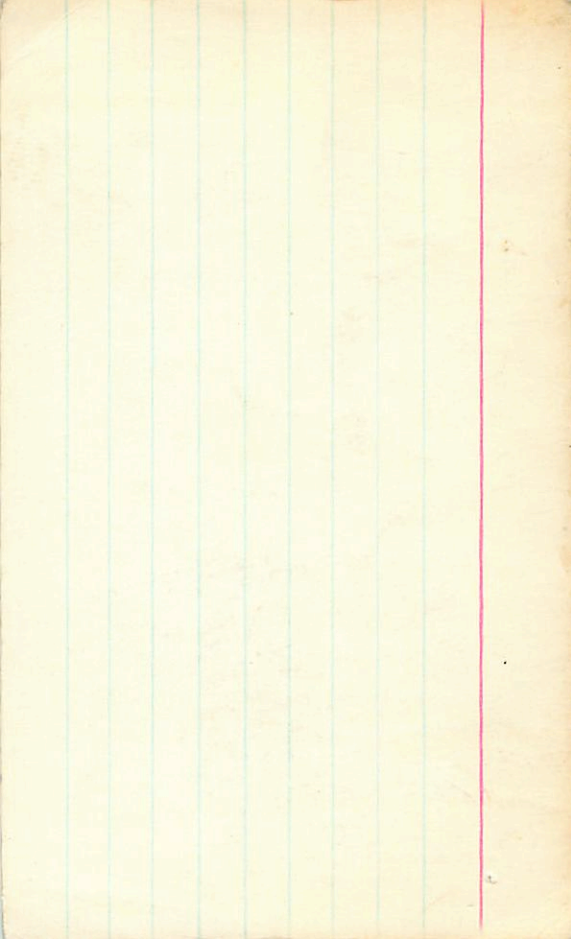
18 Nov 68

1751

12.60 + 0.489 22 Oct 83

12.63 + 0.505 ②

12.63
12.62 + 0.495
11.769
11.149



0.52

1-11 2236 5 16.94 -53 43 13.11

~~12.60 + 0.60 + 0.10 6 Jan 67~~

1751

13.18 + 1.15 + 0.75 9 Oct 67

13.20 + 1.17 + 0.70 2 Nov 67

13.19 + 1.16 + 0.72

406(8)

94-11 05 27 15 702 50 12.5 13.8 h-m

✓ ~~107~~



107 1364 70.202 202674
12.35 70.362 702670
12.35 70.370 224677
12.35 70.366

X

1762

05312-0910 05 32 30 -09 08.5

11.4 12.9m

✓

715 (A)

11.01 +0.6504776

~~10250~~

05291-30 ✓ 14 0530 15 -30 17-12.8 14.4 m

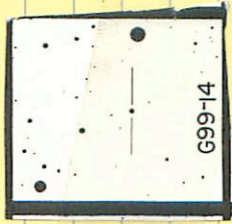
•
○

1767 (A)

11.25	11.65	11.65	11.65
11.25	11.65	11.65	11.65
11.25	11.65	11.65	11.65

94-14 ✓ 05 28 50 -03 27 11.7 13.0 b.m

1766 (X)



10.79 +1233 5079

10.77 +1041 2484

10.78 +1037 0

102-34

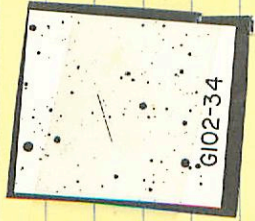
05

49

45 +10

57

14.1 1509-k



1791

13.73 +0.519 2022/24

05458-3620

05

46

50

-36-

20

10.1

11.6 M3

-3602458

✓

④ LSC1

9.66 + 0.887 42774

9.66 1776

laste 908.04

9.66 1776

② 18504

05368-4605

05

27

35

-46

07

7.5 8.1 6.0

5"

9.6 11.0

✓
Try to eliminate

the

all

Ⓐ

723

70.239 21.279

1

98-49 ✓ 06 09 30 +2.5 56 11.7-10.3^m

5251



10.48 +0.87/5224

06070-0857 ✓ 06 08 80 90 58 80 -08 80- 58 80-11.5-12.5

Q 5281

11.29 40.76 5281
5882 5281
11.29 40.76 5281
5882 5281
11.29 40.76 5281

06169 ✓ -0638 061820 -0638 126 143 015

1834

⊕

•

•

⊙

•

1171 4/11/14 48209
1171 1098 2984
1171 1105 ⊕

-22° 30' 5" ✓

06198-2242

06 21 05 -22 43

B-m
10.4 117

426.15"
1.6

Obj Chart

9.83 +0.906 42679

Obj

12.43 +0.403 95879

06251 -2511 06 23 15 -25 12 13.0 1515 m

11
00
00

1541

11.26 +0.803 98779

06191 ✓ -5951 06 19 30 -59 51.5 13.7-15.2 m

0.0
0.0
0.0
0.0

[Handwritten signature]

1527 - 157
The following
is a list of

1527 - 157

12.521
SH504
Kewall

all

G-109-16

06 36 50 +22 21.5 (13.0 14.8 m

G-109-16

9" (14.5 16.2 m

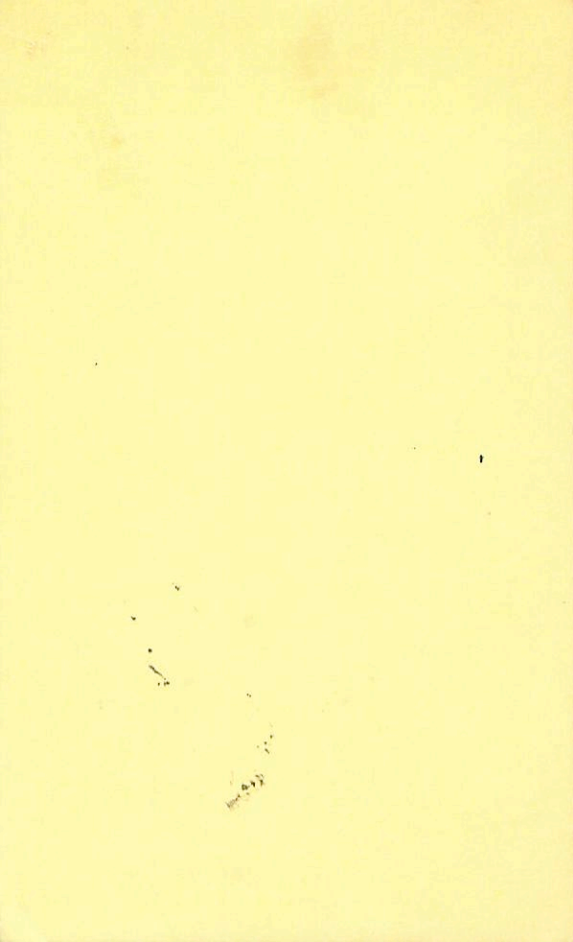
A ✓

1896

1860



A 12.39 +09.73 20279



06328-6955
1852

06 32 30 -69 5-6 12.5 140

m

⊕⊕.

1171 11074 81011
1175 11011 11071
1174 11077 ⊕