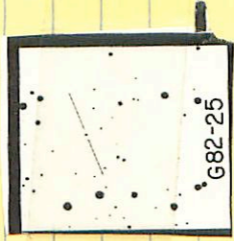


8225 ✓ 04 30 05 -05 23 12.6 14.6 m



1.083

12.24 +1.083 8.6m 75

428 3130
- 313 + 252 L

5634 9 2816 - 71 20

(40)

TV

1541 + 105 - 44 (2)

1505 + 15 + 15 + 162 (1)

1.74
13.70

1514 171 136 464 (2)

1.74
13.45
13.70

995

Var?

0550

521 1226 - 6407 + 005

(12) + 0448 TTc

P.V + 0.5

04288-4842 84 29 40-48 38

R. 9 15.4 m

R

check like this
no *

My number is
My number is

1623 +

1366 +0.469 21879

1364 +0.490 21880

1364
1364
+0.480

R

8-41 04 32 20 +20 42.5 13.5 15.3 mm

1681

(+)



12.95 +1.386 Feb 28

92-25

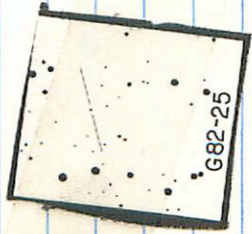
4 30 05

-08 22.5

12.6

14.6

1675



04340 -0617

04 35 25 -06 14

144 15.8 6-m

✓

11565

B - (NO)

apt. 4

1430

10.336 20 Apr 22

13.99 + 0.238 20 Apr 22

13.08 + 0.361 22 Dec 51

NO

" A

" B

~~(A)~~ (X)

(A) →

13.97 + 1.209 10 Jan 51

14.01 + 1.194 20 Apr 22

13.99 + 1.202 (2)

04349-2910 ^{deals} → 3545
04 36 05 - 29 06 136 15.1 km

0

1687 (+)

12.31	+1.166	2 Dec 75
12.28	<u>+1.157</u>	2 Dec 80
12.30	+1.162	

93-22 04 35 30 +11 10.5 13.8 151 h-m

1486

(A)



12.97 +1.232 7Nov70

G83-22

04428-1157 ✓ 04 44 05 -11 5-4 12.9 15.0 m

• © • • •

1700

11.27 +0.780 286078

8-44 04 39 10 12 15.7 m

(X) 142



517 124

13.64 + 1.003 70080

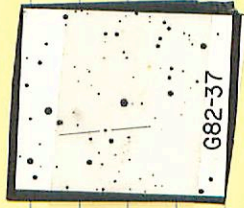
12.65

4787 9425

13.15

9807 -3342

92-37 ✓ 04 36 40 +08 06.5 12.3 12.4 hr



11.11 +01697 -82225

35-41/2 ✓ 04 54 50 +25 52 14.2 15.2 mm

DKS110 ✓ 04 54 55 +25 51.5 13.5 15.3 mm



G39-41,42

12.42 +0.936 25 Jun 78

B 12.54 +0.944 25 Jun 78

12.56 +0.924 9

~~12.44~~ +0.935

12.47 +0.964 25 Jun 78

A 12.45 +0.975 25 Jun 78

12.50 +0.975 9 Jun 78

~~12.48~~ +0.971 (3)

(X)

04481-2555 ✓ 04 49 05 -39 55.5 130.14/4

Fac1

OK

~~OK~~

OK

↓

12.22 - 16.78 19.20/4

21.74

OK

?

10/19 16.38 19.20/4

35-37 ✓ 04 49 30 +26 05.5

13.1 14.6 am



11.56 +1405 810m-5

12-6-1968 0.16 1250

FT 34

5 07 30

-19 33

11.0 }
14.5 } 10

11.72 + 1.08 = 12.80
 11.69 + 1.13 = 12.82
 11.70 + 1.105 = 12.805

13.76 + 1.823 13 Jan 71
 13.92 + 1.83 22 Jan 71

14.96 + 1.495 = 16.455
 14.91 + 1.485 = 16.395
 14.94 + 1.49 = 16.43

11.20 + 0.415 Jan 71
 11.14 + 0.405 30 Nov 70
 11.16 + 0.41 31 Oct 70
 11.13 + 0.41 29 Nov 70
 11.16 + 0.425 (4)
 11.34 + 0.425 22 Jan 71
 13.96 + 0.80 3 Jan 71
 13.82 + 0.77 30 Nov 70
 13.87 + 0.805 31 Oct 71
 13.42 + 0.75 29 Nov 70
 13.89 + 0.78

13.82 - 1.837 = 11.983
 22 Jan 71

05001-1936A

05 01 25 -19 33

11.8 13.1 h.m

139 15.5 m

B

11.34 + 425 22 Dec 71

1038 + 413 13 Jan 72 10"

11.10 + 0.420 25 Dec 71

1026 + 419 (2) 11.34 + 0.425 22 Dec 71

11.20 + 0.41 3 Jan 71

11.20 + 1.105 + 0.80 (2)

11.05 + 0.403 20 Dec 79

11.16 + 0.41 31 Oct 70

12/5/76

1376 + 823 13 Jan 72 11.13 + 0.405 (3)

1352 + 827 22 Dec 71 13.58 + 0.826 25 Dec 71

1328 + 826 25 Dec 71 13.76 + 0.804 20 Dec 79

13.76 + 0.509 20 Dec 79 13.56 + 0.70 3 Jan 71

14.94 + 1.49 + 1.04 (2)

13.87 + 0.405 31 Oct 70

13.78 + 824 (4)

~~12.86 + 0.805 (2)~~

04546-2804 4 55 35 -28 06 13.9 15.0 ^h

1717 ⊕

13.32 +0.469 7 Aug 80

05046-2927 05 05 40 of 50 50 -29 29 134 14.9 mm

.
.
.
.

1735

12.24 + 0.992 = 13.232

11.3

11.1

05011-1726 05 02 25 -17 24 11.3 12.4 4

✓

Optical double

unresolved

1901

16.38 44122 82075

05008-3128 ✓

05 01 55 - 31 30

14.2 / 15.2 m

•

①

•

Feb

1302-1225-1125

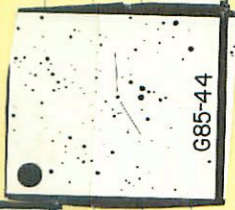
83-53 05 03 15 +15 48 148 15.79-8
85-44 05 08 00 +15 26.5 12.2 138 AM



4

1740

1123 +1.030 202474



~~137~~

1409

+0.455 202479