

Nov 53

LF-1162

14 55.6 +81 36

-900 -1200 Nov
-655 -1160 BPM
-700 -1210 f
-685 -1175 H

G166-57

1108 +132 +102-2

1020 +063 5

142

CG2075

-1296 -495 26

KFT1185

15 113 -1 10

-002944

6.60 +0.76 +0.35 ②

100E-69.0

6.29 +0.27 ③

ADD9544

.060 ⑧

$\lambda_m = 0$

$\rho =$

(ME)

G-151-34

15 04.2 -10 03 15.4 +3

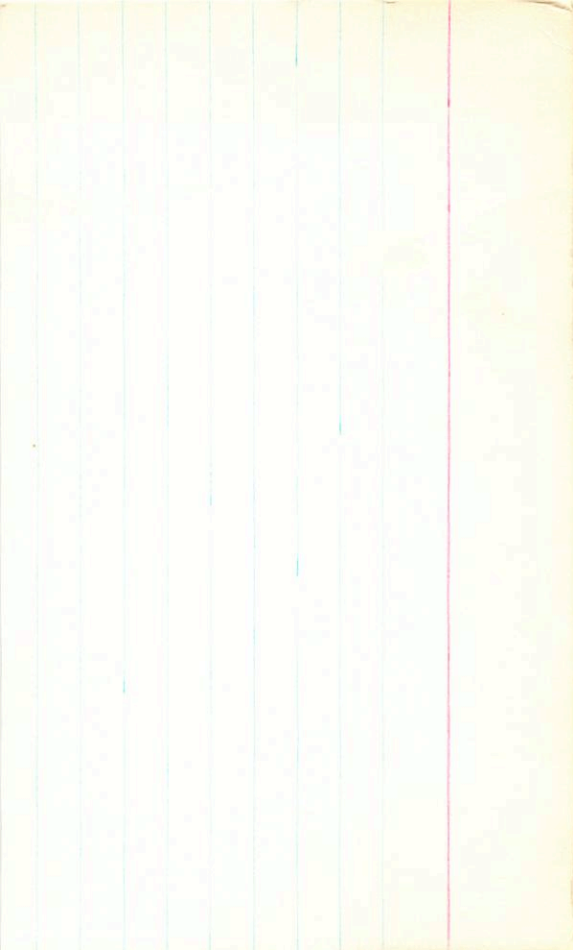
$\textcircled{E} 5001 + 9911 + 9211$

$\textcircled{4} 82.1 + 12.8$

$\textcircled{246}$

1.04 2616

~~5.00 01 - 12 01 - 84~~



Waf 562
LFT 1195

15 16.8 -7

-1320 - 50 Welf
-1205 - 85 B.P.M
-1225 - 95 G
-1220 - 65 FI
31

-704003

10.58 + 1.59 + 120 (3)

G151-46

9.28 + 1.08 Steel

248

Pr20508

LFF1203

15 216 +17

22 36

-210 -1120 P205
-380 +1180 BPPH
-400 -1310 G-
-450 -1250 T
39

Q136-103 ✓

(34)

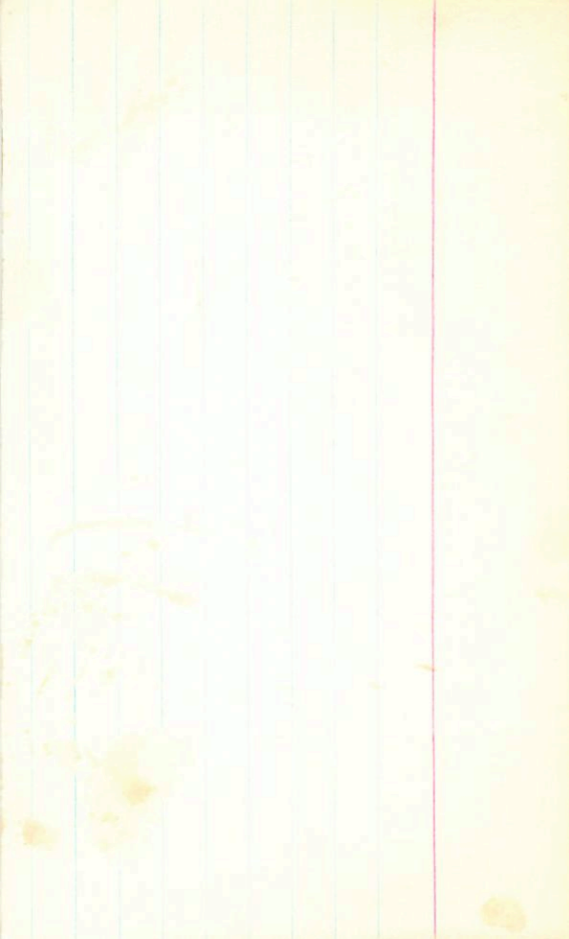
~~1369 +179 +1155 12~~

1367 +173 +125 (2)

1084 (31)

~~1215 +127 (2)~~

~~122 +133 18 July 77~~



GL20635

LFT1200

15

18.4

-48 08

-470999

620-69.1

5.67 + 0.64 + 0.045 (3)

.054 (1)

~~5.28~~ + 0.225 (3)

244

-1620 -275 6.6

07508

15.4 mb

15.73

G136-103

15

22

30

417 25.5

LFT1203

~~13.17~~

1367 +1.68 +1.335 10 Aug 73

12.22 +1.33 15 July 73
12.16 +1.37 13 July 73
12.14 +1.33 23 July 73

11.90 +1.41 25 April 75 40°C 15
12.09 +1.31 26 April 75 "

12.01 +1.61 30 " "
12.17 +1.22 24 July 73
12.02 +1.32 17 July 74
12.04 +1.375 3 July 77

12.17

12.02

12.15

+1.22 29 July 73

+1.32 13 July 74

~~1.22~~

+1.27

12.11 +1.357

WV 10.67 + 179 + 1.8

1.37

15.1 + 3

G 136-103

15

22

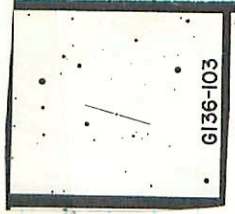
45

+ 17

34

Reduplication
D @
Var /

1.02



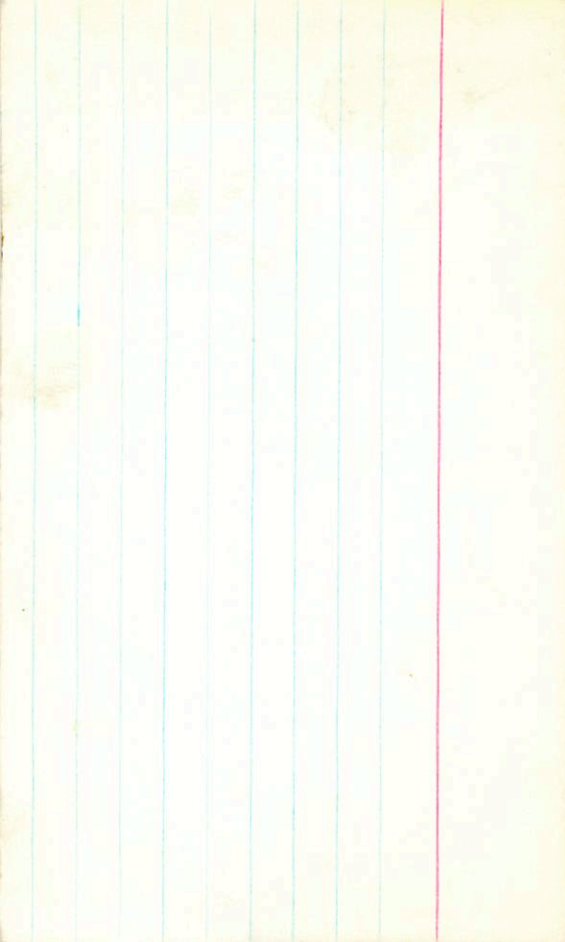
17.9 + 2

13344
13344
15 27

11.50 71.41 25 Apr 75 40'67

12.09 71.31 26 Apr 75

12.01 71.61 30 Apr



6098"

Row 513
BPM 40870
LFT 1210/11

15 33.1 +17 53 -1205 -160 π

-1170 -120 Rows
-1205 -125 BPM
-1310 -160 G

Q1372516

12.42 +160 +122 (2)

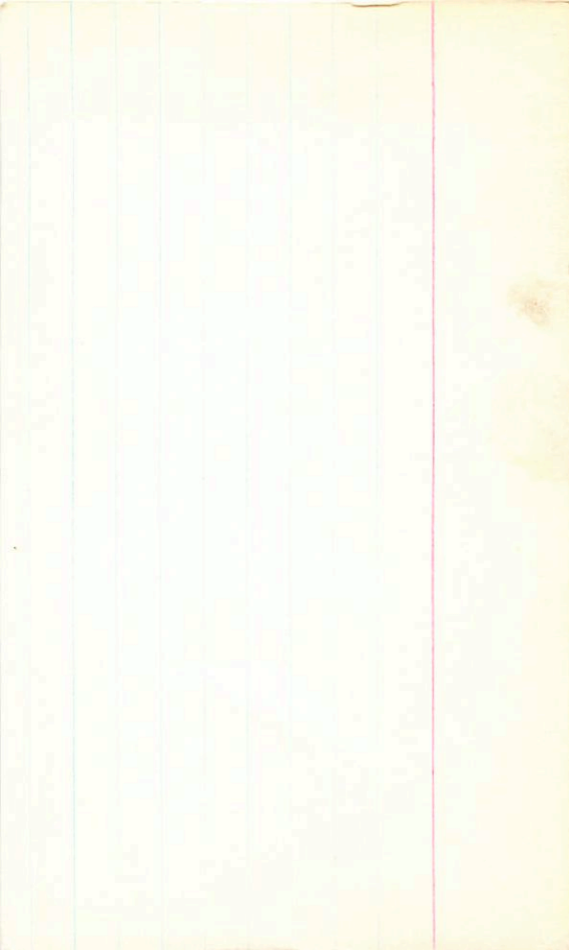
11.22 +162 (2)

.070 (45)

(252)

15.00 +178 - (2)

13.49 +140 (2)



Fmes

LFT1208

15 25.0 -41 04

-1215 -950

-1195 -1020

Fmes
OPM
Comp

9.30 +1.51 +1.14 ①

9.12 +1.05 ②

.166 ④7

②51

Imes

-230-1250 I max
-215-1095 BPM
+85 = 11

15 35.7 -54 58

LFT1216

L201-12

12.82+137+121 ①

Adm +115: 12.06+0615 ②

.020 ①

F 48-16

15 3315 +2 22

1.192.260

LP622-6 15 32.0 +2 26.9 14.1 15.7 m

2016

LFT 12-16 15 35.7 -5458 15.36 -m 1.14

12.17 +0.63 26 ^{py} 69 12.82 +1.37 +1.21 13 Aug 14

24 " 8"

11.95
12.06

253

+1250 -310 40
+1145 -360 6
1200 -304 11
13.5 43

AB24 15 35.3 +43 39

G-179-43

11-12 5"

Use

