

+30 -1025 GC

GC11731

12 12.6 -10 01

LF7888

-903468

6.12+0.47-0.14②

FGI +8.0

6.870 +0.145②

102525

155

P 622923

LF1873

12 00.1 +36 53 13.7 +3

-465 -555 P No
-450 -525 G

G122-67

154

BPM 99104 129579° LP

LF 7895 12 16.5

L1150-34 .151 ~~200~~ nnn

G12-30

550-9932 1.2600
0631 1162 -0721
-2.00
0.875

(146)

-1260 +200 BPM
-1200 +275 G
-1243 +2.4 Strand
+11 24

12.74 +1.93 +1.01 Strand

13.92 +1.88 +1.06 5①

12.00 +1.58 (2)

11.62 197

247

9.67

9.90

1050

(411.5)

①②

1.33

G12-30

12 17 4/6 +11 16 15.3+3

13.82 +1.98 +1.065 12 months

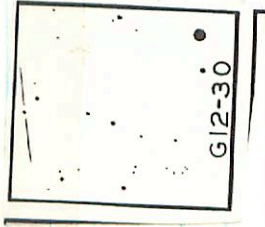
11.87

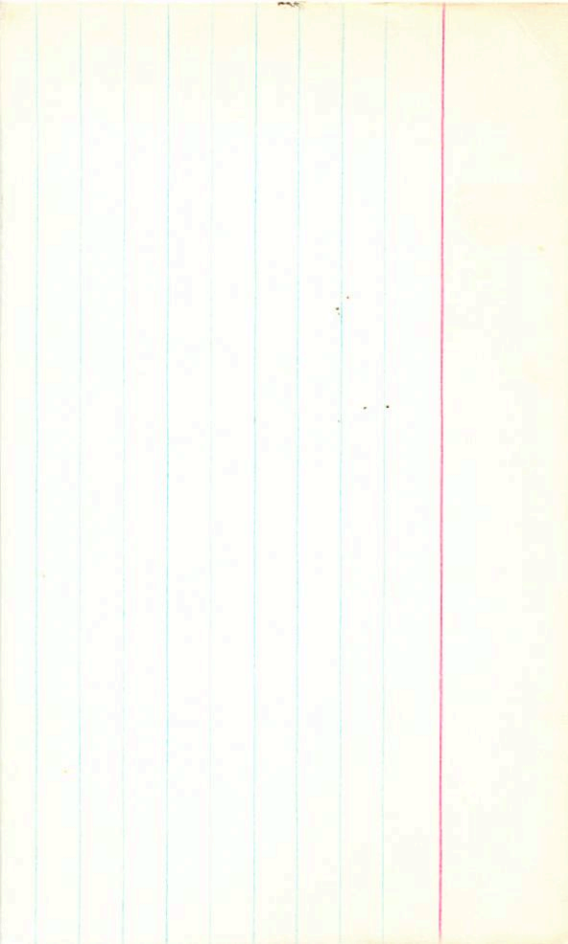
12.01

12.09 +1.575 25 April 40% CT
 11.90 +1.585 26 April
 12.00 +1.58

10.42

10.10 / 1.02





975-120 RPM

BPM 56231

LFT907

12 23.2 24 18

L686-44

12.82 + 0.59 + 0.49 (3)

adiv + 44: 12.31 + 0.355 (4)

154

Russ695
LFT904

12 22.1 77 56

+1210 -2180 Ross
+1100 -2260 BPM
+1136 -2321 $\bar{11}$

.107 (29)

dm4 +58.0

11.33 +1.595 +1.13 (2)

10.10 +0.48 ~~etc~~

(14)

Wulfsch
hFT 923

12 30.8 +9

G12-43

$\Delta m = 0$ HR

1400 i.s

1227 49

100

dmb-5.0

12.44 + 1.84 + 130 (4)

10.58 + 1.58 (67)

-1860 + 200 km/h
-1685 + 235 G
-1725 + 215 H

-1265 -110 C
-1218 +146 Stencil

G199-17

12 26.9 +53 49

LP130-225

+644 ± 100 Stencil

1419 +1.54 - Stencil

WDB 576-566

BPM 21414

LFT 915

12

26.9

-55

43

L-194-11

① 13.27 + 1.62 + 1.24

② 11.80 + 1.245

-27:

(over)

-420 + 1040 BPM

RPM 7567/8

hFT 911/2 12 25.6 -71 13

L68-25

13.72 + 1.59 + 1.11 (3)

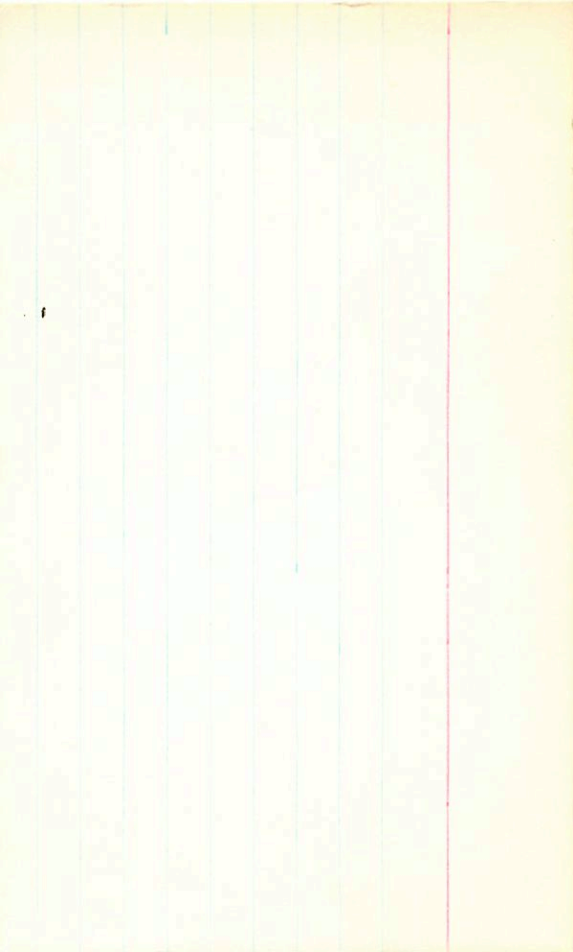
-110.5

12.60 + 1.11 (2)

(159)

15.68 + 1.82 + 0.525 (2)

14.20 + 1.34 (4)



BPM56411

LFT932

L471-12

R 36.2 -35 05

12.74 + 1.64 + 1.25 ①

11.22 + 1.38 ②

203

1470 207 BPM

BPM 21500

LF 1430

12 35.7 -51 44

-1040 +20 Comp
-1010 +35 BPM
-1025 +25 TT

5106859

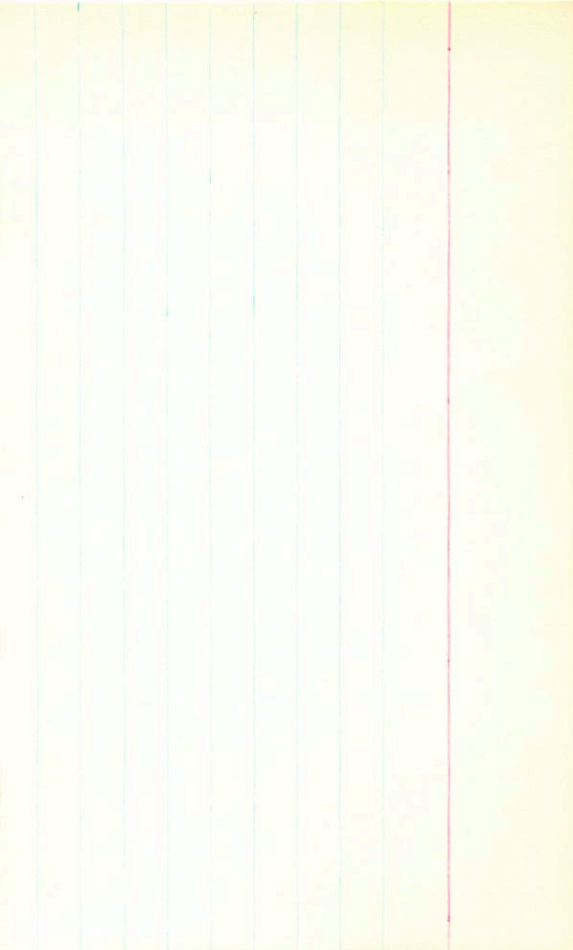
10.66 +1.56 +1.14 ①

Cape FS 10155

.116 ①

9.43 +1.06 ②

202



W04/437
LFT647

12 45.5 +10 02

-595 -400 T
-525 -450 U off
-595 -420 C

G60-32

11.40 + 1.56 + 1.16 ③

10.00 + 1.21 ②

0.124
10.124
10.124
10.124

10.124

10.124

Income

684935

639968

BPM 57123

10 W.

49185 I

205

-75 465 RPM
-220 - π

12 381 -43 15

12.24 +1.75 +139 ③

10.96 +1.14 ②

-44:

1030 312° 0m

WVY 433

LFT 933

1.16 2590 LP

12 36.4 +11 58

-1150 -180 Wvdy
-1125 -240 BFM
-1100 -200 G

G60-24

.662 ⑥

11.52 +147 +119 ①

10.22 +108 ③

604

