

5084 - 13 324 - 85 31 A2

117374
16357

54089 215

557 114 + 14 6

245

0532

1580 ✓

1101 215 1011
1101 215 1011

25502

855

10.4

0 7m 0

0750-0224
0750-0224

040 1000

6268 - 450 4

01023

0980-

0980

6675-0157
1980

1000 - 3.11 ✓

- 80

055

- 1110

000

- 10793

1600
2091
5.20

117242

HR5076

FC18213

13 26.0 + 53.00

1153 .186 .894 (3) SR 2.787

(3) Cat

5094

17661

(sum)

13 293 18 28

175

936

105 197 957 2850

8064-014

6100 002 1.307

+130

898-014

593

+172

9528 9998 } 0978
3035 10180 } 0159

-100
19
5.25
-175

-104

-14

940575
-175

020

020 5.91 1151 440

242

R.A. : 13.500
DEC. : -18.450
R.A. : -104.000
DEC. : -14.000
DISTANCE : 5.150
MODULUS : 107
VEL. : -17.500

1 (U) : -0.781
2 (U) : 0.333
3 (U) : -0.529
dU : 342.943
U : 45.997

35.2
15.73

1 (V) : 0.605
2 (V) : 0.617
3 (V) : -0.504
dV : -323.664
V : -25.861

1 (W) : -0.158
2 (W) : 0.713
3 (W) : 0.683
dW : 26.556
W : -9.109

U

18354 076193 1044 285 ✓ Sp. O. P = 2.66 -151

118232 12 32.4 + 44 16 A3 -12. C

24664 W289
HRS112 W350

W289 4.60 4.17 - 0.49 1.96
78.19 AVE
078793 10.29 285 ✓ -125 + 0196 C
-131 + 023 ✓
-132 + 025 ✓
-130 + 022 ✓
-0134 + 023
-0129 + 024

2712 1204
128 + 138
1335
- 944 - 944 1335
5988 6020
+ 3220 0131 430
Prod

-776 + 620 410 + 4715 + 0117 15402 - 17 + 129
+ 607 + 640 + 342 + 3712 + 8470 - 9789 | 13124 - 112
- 167 - 371 + 413 + 1021 - 6357 - 2041 1402. Prod / - 190
4421

W289 4.19
170
W289 4.19
W289 4.19

-352-910 758 652 -130+022 -12 017-9 066
-051007 118-015 -171 552 -7.8 +7 +3 015
-4 +43 -4

43

13 33.1 444 28 AS III

5116
118295
18370

7148
1300

105 227 940 ③ SPO 2.852464

6084 008 1.314

65 + 246 919 2.852

MV = +1.9

227

16
5.43

286

Dubs (FIVS)

1019670153

016 1115

94

DEL. : 153
PLUS : 2.458
ANCE : 12.000
DEL. : -22.000
R. A. : 24.458
DEC. : 13.538

DEL. : -22.000
(U) :
(U) : -0.273
(U) : 0.430
(U) : 0.049
U : 182.186
U : 11.242

(U) :
(U) : 0.488
(U) : 0.234
(U) : 0.252
U : 0.201
U : 2.868

(U) :
(U) : -0.149
(U) : -0.262
U : 0.201

R.A. : 13.550
DEC. : 44.450
R.A. : -22.000
DEC. : 15.000
ANCE : 5.430
ULUS : 122
VEL. : -25.600

(U) :
(U) : -0.775
(U) : 0.630
dU : 0.049
U : 102.486
U : 11.245

1 (V) :
2 (V) : 0.608
3 (V) : 0.724
dV : 0.325
V : 6.201
V : -7.568

1 (W) :
2 (W) : -0.169
3 (W) : -0.282
dW : 0.944

114570

13 09.5 -65 50

+8.9

1787 ✓
4877

+10053767 -007±4.6

28.950 99.5

42.71 91.2

$\frac{265}{71}$

$\frac{41}{4230}$

10034 1017

28.733

42.15

42.04

21

-29

853

12.73

624 1017

-403-915 545 804-104+025 -6015-4 076

2041006095-014 -125 479-2.4 +2 +1 011

~~1945~~ 5.87

L0 14

DAD 21

1945 -11 1/2 -28 -174 (6)

-12 5-21 -16.0 (3) ←

+16 6-14 -1.0 (4)

-8 6-15 -16.7 (5)

1945 1517 -5 5-14 722 (4)

1945 4000 km

-10+45-43

+40-23+3

-9+41+3

+36-20+2

+35-21+2

115

012

55



1950
1951
1952

TO125 190045, 0124

Co II

83 Val 119605 13 41.8 - 15 56 dF9 10.76

14R5165 18568

5.60 +0.81 +0.41

7010 -0106C

8112

+016 -110V

47 50 N30

+013 -012F

1000 10008 ± 1.5 - 1007 ± 1.86C → 1030

+013 -011

10126 - 10015

FILES
+10004
+10004

10130 N30

+00063 -0104 F124

10046 +10054 -0130 N30

1676 17.75 / 938 13.75

+10035 -0115

+0091

1681 17.75 / 938 15.4

+10050

0097 1001 7075

10113 - 0019

0123 +2.1
0014 +10.5

1006 - 0008

-1022 10020 - 6410

6032

865

-125 0126

1000 796 0070

1010 - 0005

+0.7

1000 - 0126 7020 - 6476 0121 + 1011 0 + 0.7 0031 2.57

48

-274962-

13.750
-15.900
10.500
-7.000
7.000
251
0.700

-0.753
0.343
-0.561
-47.424
-12.305

0.622
0.650
-0.437
0.210
1.756

-0.215
0.679
0.702
-32.796
-7.746

26

432 6 25.2

40.0 P = 84

-9365 ± 1.9 -151 ± 1.9
-0322
-0288

119756

13 42.8 -32 47

280 -27.86

1 Gen 119756
18543
8121

4.22 +0.36 +1.59 24'5
4.20 +0.36

-460 -1516-c

HR 5168

F=2R d.u.

-460 -146 N

53Y(10) 50.335 1907.8 -32 47 29.89 6032
1.540
875

-458 -150 F
-460 -146

W8/21

51.875
50.690
21
360 -814

23.13

28.26 143976
-20

03663 -14449 N
462 -145
462 -145
9650

7012

3274 + 662
3274 + 662
3274 + 662

40.4

28.46
-20
5944
29.72

48.2

5810

23360

40.4

6.59

43.0

-1.515 5404 -3401
-9960
-0859

4787
1028

30.78 1956.74
-28
3096

50.052/052

9380-5669
 347-0722
 1096
 1702

152-0368
 + 5
 152-0363
 + 5
 152-0368

1951 Aug 1561

135
 525
 1458
 1458

1458-1458
 1458
 1458

1458-1458
 + 5 + 4 + 1
 + 5 + 16 + 8

200 035 44 073 - 601 1458 - 19.3 + 16 + 8
 2.224
 434-301 - 542 841 - 460-144 - 21.8 081 + 12 - 552

SS
 10

5162

13 39.9

465 05 AD

11976

18529

ju 10/11/19

- Silvanus

5.65

0410

180

1022 2403

of ad

033

194

1023 2528

56

037

187

1022 2.913

(2)

194

194

388

067 = a

194

1015

1026 = n

1403

1471

~~1910~~ 11.7
365 3.95

+8081 - 0169

+8086 - 016

1054

47

2401768
-1197565
4118953
604
59

2006 am 1kg
13 42.9 - 82 47 F2 III

200
218

4118953

540

4.23 + 36 00 C
4.23 + 31 00 D
4.23 + 38 00

6418953
289

→

247 . 155
840

562 11 1/2
550

2200
2.644
2.206
2.241
21140

16em

251 160 550

2.695

[m] 210 28 98 - 8
210 540

422 142 934

2-458

[c] 506499 2

128 444 + 41 - 16.8 - 13.0 - 0365

812 - 21.8

+ 16 - 17 - 1

+ 17
3/2

155 511 2700
141 1000

818
821
828
828
818

48

R.A. : 13.700
DEC. : -32.800
PM. R.A. : -520.000
PM. DEC. : -144.000
DISTANCE : 1.200
MODULUS : 30
RAD. VEL. : -21.800

p1 (U) : -0.789
p2 (U) : 0.178
p3 (U) : -0.652
qU : 1246.800
U : 44.268

p1 (V) : 0.619
p2 (V) : 0.490
p3 (V) : -0.614
qV : 1098.0
V : -20.330

p1 (W) :
p2 (W) :

R.A. : 13.700
DEC. : -32.800
PM. R.A. : -550.000
PM. DEC. : -144.000
DISTANCE : 1.500
MODULUS : 20
RAD. VEL. : -21.800

q1 (U) : -0.759
q2 (U) : 0.170
q3 (U) : -0.629
dU : 1546.880
U : 44.568

q1 (V) : 0.619
q2 (V) : 0.490
q3 (V) : -0.614
dV : % -1690.01
V : -20.330



5170 13 42.9 -15 31 A0

119786

18895

6.19 +0.5 (+0.4) 6

(2)

6.21 0.43 1.42 1.014 2.883

(32)

150

300

1005

1305

1384

282

047=2

03422

178

1.2
5.0

412

00246 -0582
+ 25

60303 -03527
+ 4

60294 -0339
-041



49





0015-008

5206 13 48.7 -46 39

120640 ~~60~~ 5.75 -0.16

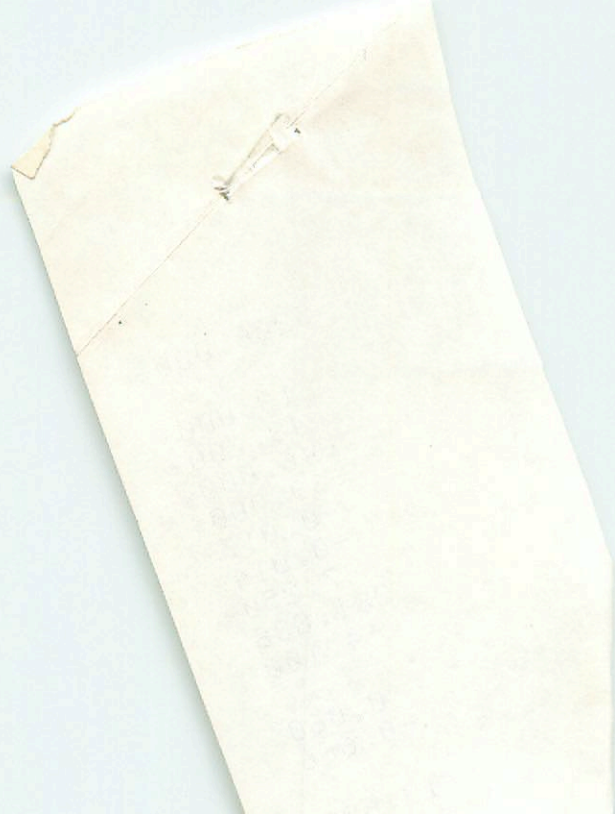
" -6173 -0138 Fly Control

017-014 -4.1

9c-d

080	055	178	2634
	880	154	2632
	146		2630
	<u>360</u>		

$M_U = -2.5$



5206.000*

13.000*

48.700*

-46.000*

-39.000*

-0.017*

-0.014*

7.250*

281.838

-4.100

0.060

-0.666

19.600

5216
120874
18716

13 48.7 + 58 47 A0

6.3

(14)

036 210 976 2.901 et al

-1000
-024 x 1000

300

216

432

969

1401

1467

183

+55 = a

+8 = r

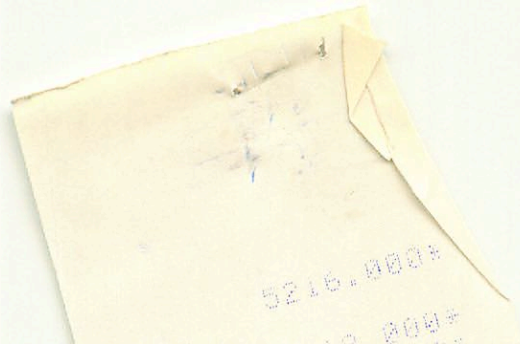
1000

1.8

4.5

51





5216-0004

10-2004

Sp.O. P=4454

121370 13 52.3 +18 39 2.8 dF7 -
18805
8204

2.70 +0.59 +0.20 G-0 E

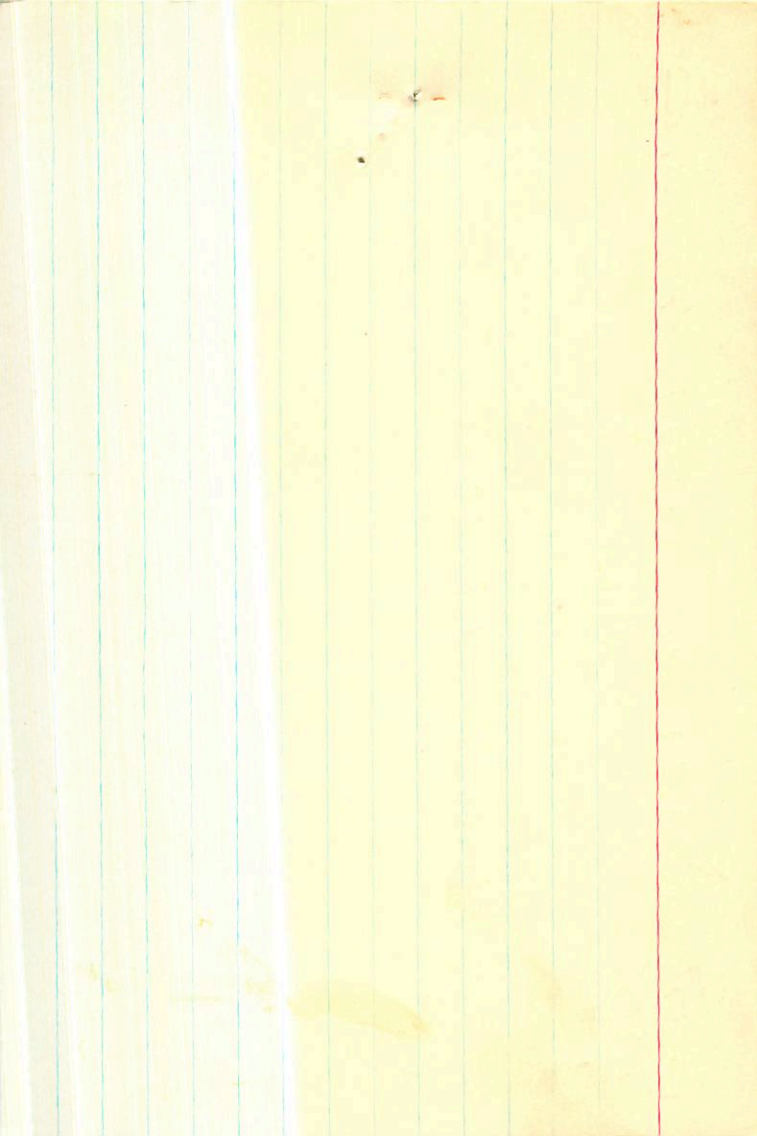
116
-0046 -362¹⁰ 1130

6666H
10255
-0046 ± 0.6 -360 ± 0.6 667130

-100458 -2646
-3644

-1651
-164
-361
-0.7
-10.1

-063 -361



R1370

13

523

+17
+7

+18 39

Both

HR5235

GL19905

8(7) BOU

SB 495-d

268 40.58 40.20 J

.378 .206 .474 (3) SPL 2.637

²²⁴
-00449
⁶⁷³
-064
¹³⁹
-3629
F124
-062-359

-0.1a

(-5.6)

W 274
W 358
W 398

+4

+12
+12

0.00

-8.2 -15.0 -2.2

-816 -1504 -206

+2.55

40.15

52



5215.000*

13.000*

52.300*

12.000*

33.000*

-2.062*

-3.359*

0.10

3.150*

12.715

-2.100

-2.818

-3.291

7.8

-3.739

-1.507

13.900
18.420
-04.000
-361.000
-0.200
R.A. :
DEC. :
R.A. :
DEC. :
R.A. :
DEC. :
R.M. DISTANCE :
MODULUS :
RAD. VEL. :
d1 (U) :
d2 (U) :
d3 (U) :
p1 (U) :
p2 (U) :
p3 (U) :
u :
v :
d1 (V) :
d2 (V) :
d3 (V) :
p1 (V) :
p2 (V) :
p3 (V) :
u :
v :

-15.147

-3.206

3.957

R.A. : 13.900
DEC. : 18.650
PM. R.A. : -66.000
PM. DEC. : -361.000
DISTANCE : -0.200
MODULUS : 9
RAD. VEL. : -0.100

q1 (U) : -0.735
q2 (U) : 0.610
q3 (U) : -0.296
dU : -826.178
U : -7.505

q1 (V) : 0.631
q2 (V) : 0.775
q3 (V) : 0.031
U : % -1513.5
V : -13.807

48

9505 7484
3107-1123

12461

13 56.7 -61 15

F22

425524

1101 121 1117

156.51 +0.325 +0.05 255-

207 224 211 607

017
260

.206 .175 .723 2.736 (2,14,11)

[m] 212 +5

-0095-030
-0017-030

[6] 682

189
-42

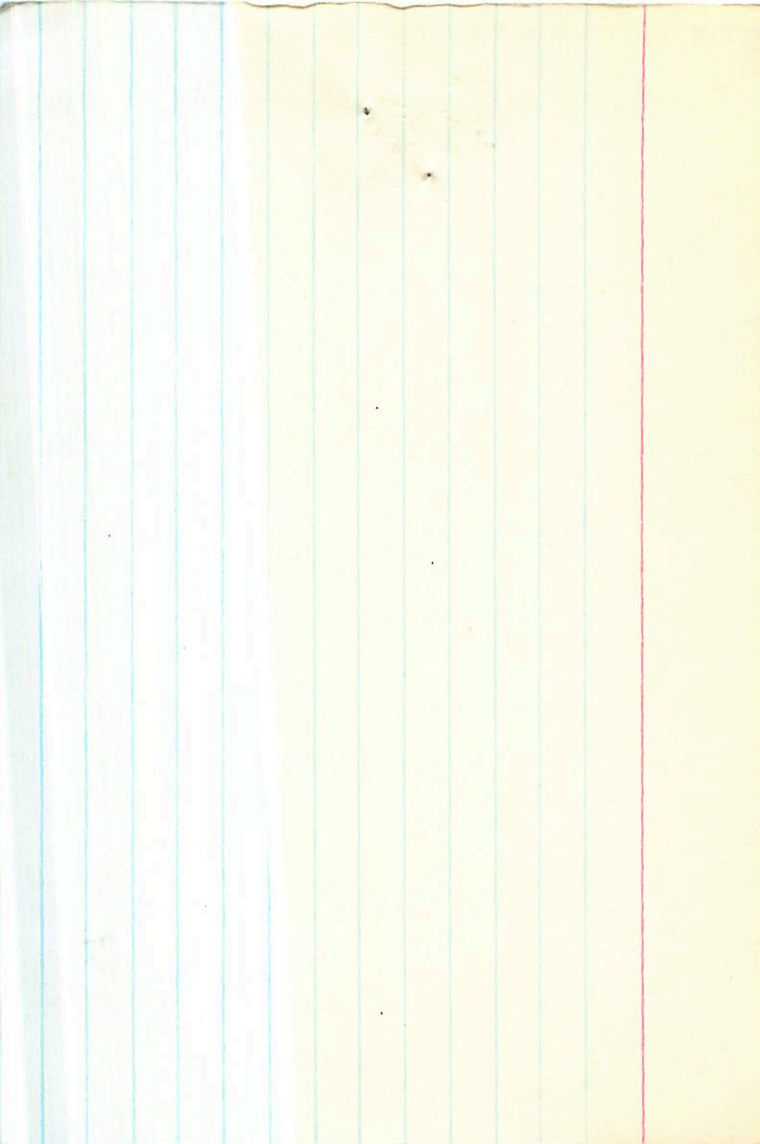
4.07

" +13.0 -15.4 -6.8 -0.67

3.91

+601

+270 -235 -109 -042
+601



18.8
- 75.1946.5
7.492
37.46
6.50

15.01
- 22
18.74
+ 04
18.83
19.38

2.36

1928.43

16.5
2.75
0.53

37.46

18350
19.24
0.56
0.50 + 5.5

490
620
0.110
0.04

442

443

43.535
45.540
47.595

440
441
43.545

43.64

6.48 to 0.34 (1.58)

18950

47

13 56.7 - 61
14 F2E
- 88 - 63 - 32
- 4
- 11

12901

53

Handwritten notes on a piece of paper, possibly a page from a notebook. The text is faint and appears to be a list or a set of instructions. The paper is slightly torn at the top edge. The background is a light blue surface.

Handwritten notes on a piece of paper, possibly a page from a notebook. The text is faint and appears to be a list or a set of instructions. The paper is slightly torn at the top edge. The background is a light blue surface.

R.A.

13.250

DEC.

-61.250

...

-132.000

142.000

5203 12 58.9 +27 38 A7 III

12040
18931

469 2824
167 200 550 @ SPO

1000 +017
-180 +017

6.23 006 1.3 53

+0.70
+1.0

-90
11

5.37 9860
-240 -0738 1669

54

000.0
000.0
000.0
000.0
000.0

000.0
000.0
000.0
000.0
000.0

000.0
000.0
000.0
000.0
000.0

.A. : 13.000
EC. : 27.650
.A. : -90.000
EC. : 17.000
ANCE : 5.370
ILUS : 119
EL. : -24.000

(U) : -0.826
(U) : 0.563
(U) : -0.033
NP : 357.391
U : 43.171

(V) : 0.563
(V) : 0.826
(V) : 0.027
NP : -145.981
U : 188.541

1926

-0062 ± 1.3
 -0062

$+011 \pm 1.2$
 $+012$

HR
5263

13 58.9 +27 38

-232

68478

44.423
 $\frac{276}{99}$
 $\frac{6}{99}$

~~-082~~ +011
15054

$-0063 + 016$

$\rightarrow 38.16$
 $\frac{63}{37.53}$

1902.7

1770.

5-4.388
 $\frac{16}{404}$
 $\frac{95}{95}$
+2

~~-084~~
+0115 NO
+0105
+0014
+0019

$\frac{00}{35.15}$

38.15 195.2.68

1906
419
0153
01501

-0822
 $-080 + 016$

+
62
+ 4537
3006
1088
78070
0112
0804
4.157 5.25
+386

-722 657 -215
636 953 164
271 017 962

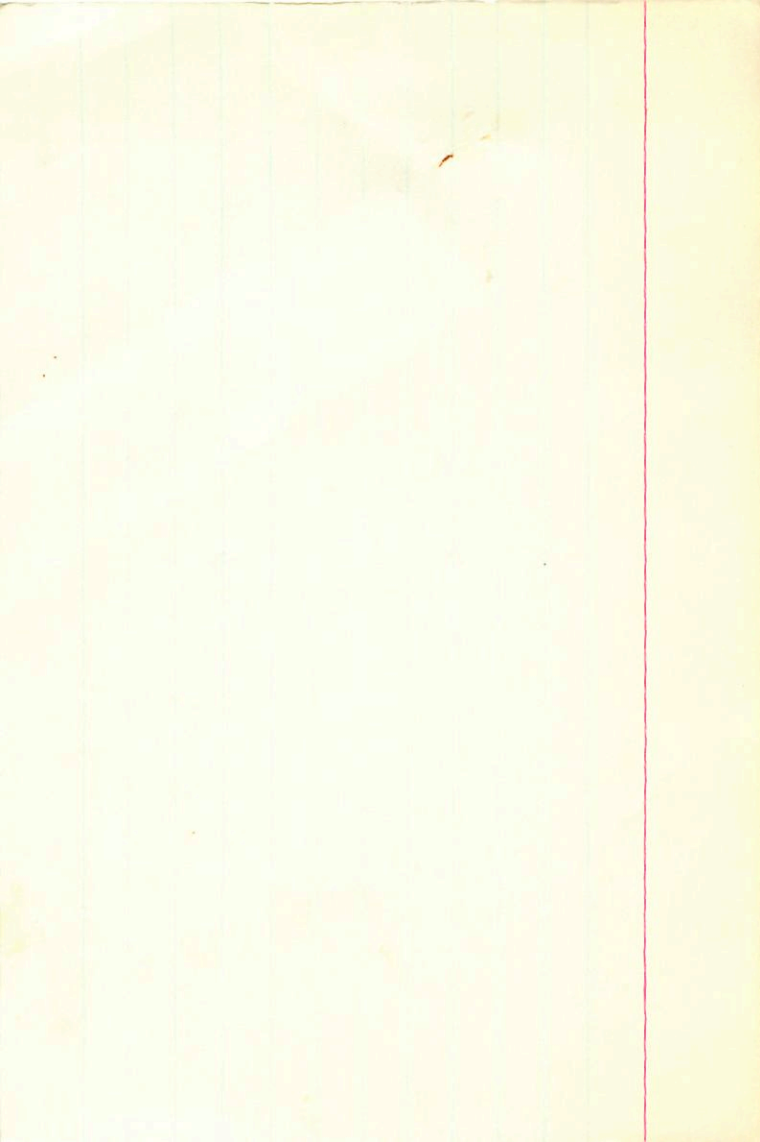
8235
-5673

9978
0651

-1074 + 0013

-16.7

-20.8



40184-0212 FRS Quinn D.C.

-0.2 -0.4

2 Uni

122405 13 59.1 47 41a -2.08

HR5264

4.24 10.10 +0.12 1015 -0.266C

8244 11372843 A4 III

1015 -0.230N

VR8244

067-104 109 92 N30

1015 -0.24F

AD59065

+0009 -0.23 9M30

1015 -0.22F

80" 9 mm

+0010 E-0.8 -0.21 ± 0.966 -9M30

-2.04

80" 9 mm

062164 1477 2843

1015 -0.22F

656

+0011 100123 0212 PMS

11411

16 Δm = 5.20

+0102

dr

7857 027

VR3 007 1.554

+0181 -0.210 -0.51 0072

9912

027

56

+0181 -0.210 -0.51 0072

-1322 -6186

70053

RRS

+17 11 11 4 5.5

6154

18

0218

-20

018 ± 0.02

101

5.83

-2.0

174
-496-868 0/ +015-024 -2.0 0 0 -144

007 0-013 0 033¹-062¹ -2.0 +1.7 +1.0 013

+4.3-3.5

+5.0-5.2-11.4 0-1

-9.5-3.9-8.9

+9.9-14.5

004

+3.9-3.1-7.6 015

+5.8-7.0-14.2

005

-5.9-2.4-4.4

-12--5-10

007

+6.6-8.0-16.3

-14-5-12

005

+8.3-11.4-22.8

-14.9-8.0-15.4

85

0.1	0.1	0.1	0.1	0.1
0.2	0.2	0.2	0.2	0.2
0.3	0.3	0.3	0.3	0.3
0.4	0.4	0.4	0.4	0.4
0.5	0.5	0.5	0.5	0.5
0.6	0.6	0.6	0.6	0.6
0.7	0.7	0.7	0.7	0.7
0.8	0.8	0.8	0.8	0.8
0.9	0.9	0.9	0.9	0.9
1.0	1.0	1.0	1.0	1.0

A series of numerical values, possibly representing a sequence or a list of data points, arranged in a roughly linear fashion. The values are not clearly legible but appear to follow a pattern of small, repeated characters.

0.17. ..

14.000
1.800
1.000