

013

+19  
52  
-34

443 1 29.5 -45 10 40

1407

+506  
+030 +024

72

6.18 24 176 1057 2.902 254

182 1052

364  
1446

Ⓞ +032  
Ⓞ +031

$\bar{E} = 0$

$M_V = 11.15$

27



419.000\*

1.000\*

24.300\*

3.000\*

16.000\*

0.009\*

-0.019\*

6.250\*

177.828 <sup>11.65</sup>

15.000

-0.008

0.403

4.657 <sup>49</sup>

-0.091

0.340 <sup>8</sup>

-11.069

-0.040

-0.050

27

424 1 314 +86 58 8910

9531

591 -031 125 247 2081 62

206027

116 753  
2327  
85

1008-0136c -the

1009-010 K114

+low  
[1009-014]

1001 = 1001  
1001 = 1001  
1001 = 1001

1.0 = 1.0  
V0 = 5.95  
5.95

-4.5 + 2.4 MW  
50

(1)

28

1900  
1901  
1902  
1903  
1904  
1905  
1906  
1907  
1908  
1909  
1910  
1911  
1912  
1913  
1914  
1915  
1916  
1917  
1918  
1919  
1920  
1921  
1922  
1923  
1924  
1925  
1926  
1927  
1928  
1929  
1930  
1931  
1932  
1933  
1934  
1935  
1936  
1937  
1938  
1939  
1940  
1941  
1942  
1943  
1944  
1945  
1946  
1947  
1948  
1949  
1950  
1951  
1952  
1953  
1954  
1955  
1956  
1957  
1958  
1959  
1960  
1961  
1962  
1963  
1964  
1965  
1966  
1967  
1968  
1969  
1970  
1971  
1972  
1973  
1974  
1975  
1976  
1977  
1978  
1979  
1980  
1981  
1982  
1983  
1984  
1985  
1986  
1987  
1988  
1989  
1990  
1991  
1992  
1993  
1994  
1995  
1996  
1997  
1998  
1999  
2000

446.000\*

1.000\*

31.400\*

36.000\*

58.000\*

0.009\*

-0.014\*

5.950\*

154.882

-4.500

0.024

0.611

0.899

-0.054



949 9612 / 33.2 +74.03 1022

Mem 12, 23 440  
47.00 3.07  
6.78

040 093 893 2.714

13.237 969 +0052 -0074 240 -003 ±3.2  
12.547 10013-003 17/313 4696 944 152  
13.029 +0040 -0026 4704 1996.24 87  
070 070 1252 +02 26 -8  
13.101 1004-00 4704 26  
12.559 +552 -8

29

1.550

74.000

87.000

-8.000

7.600

331

-8.000

0.775

-0.257

0.577

97.890

27.800

-0.608

-0.059

0.792

-66.901

-28.485

0.169

0.965

0.202

-17.322

-7.353

29

Hg MM ? 07/IIA

RG II

32

+34

25.3

1

438

6.39  
-045 113 607 2739

100 616 202 910

10070 10041 1650  
m ~~0.6~~

$E(y) = +0.01$

$m_y = -0.6$

9300  
-608 000  
F 154 1000  
+0.4

$V_0 = \frac{6.35}{6.95}$



30



438.000\*

1.000\*

29.300\*

1.000\*

173081

449

1.33.3. + 74 02

897

9412

6.6

-N 5 2.5  
+060-002

+043 093 893 2.719

W582-0012  
-4.9

101 884 202  
1086

2887  
168

14241

-125

+04



776



13.237 1896.9

+0074 F.V.O  
+0044

-003 F.3.2  
+001

46.56 1894.4

$\frac{383}{12,854}$

+0060 -002

$\frac{17}{47.13}$

13.024

+070

13.098

244

47.06 1896.24

+02

47.08

.05

3

1871  
1872  
1873  
1874  
1875  
1876  
1877  
1878  
1879  
1880  
1881  
1882  
1883  
1884  
1885  
1886  
1887  
1888  
1889  
1890  
1891  
1892  
1893  
1894  
1895  
1896  
1897  
1898  
1899  
1900

449.000\*

1.000\*

33.300\*

74.000\*

2.000\*

0.023\*

-0.005\*

2.750\*

354.813

-4.900

0.091

0.577

29.321

-0.065

0.791

-26.926

-0.004

0.203

-2.505

31

449

1 333

+ 77 02

895

9612 ✓

6.15 + 06

117 874

- 81 ~~874~~ 117

2719 4

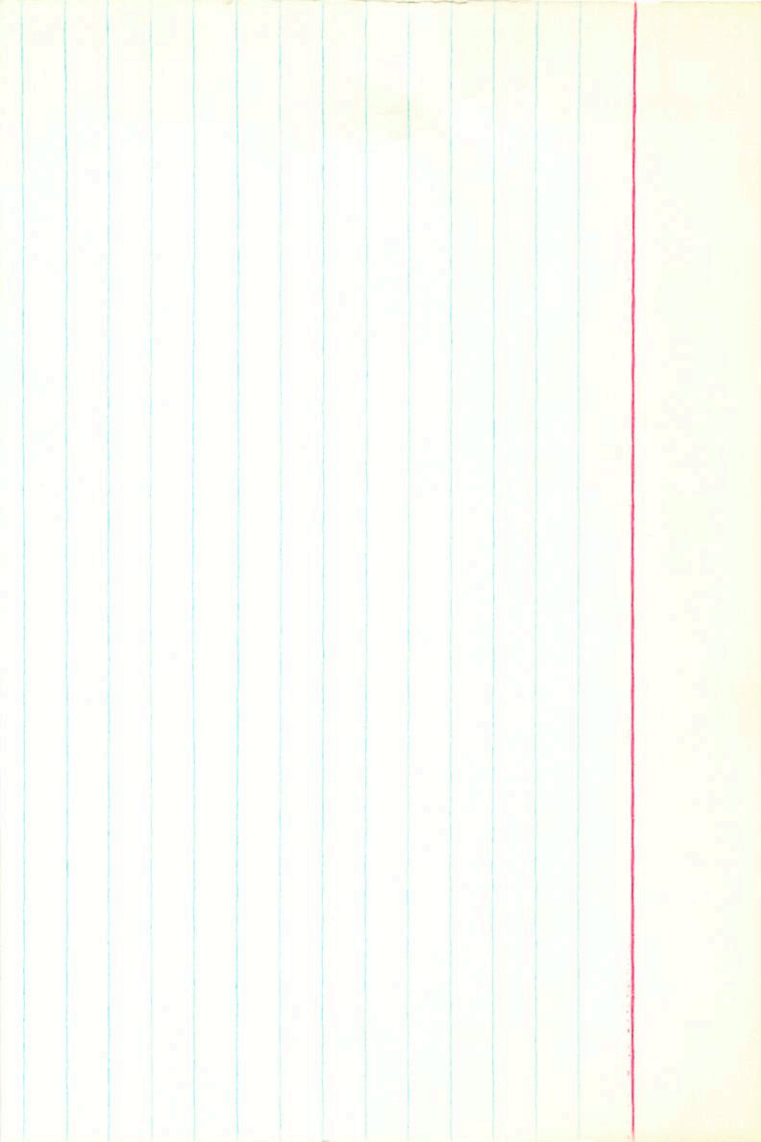
44-

108 880

216

1096

1  
-1.35



101 Dec 1 33.1 +14 24 095 MI

455

6.2

9766

014 093 936 2712

4000

097 933

174  
11 89

5.739 24  
-9  
780

009 ±07  
-005

-1.45

1.55

4.84

2248 1.6

75

44  
2242

7

7.7

-10.5

400015-007

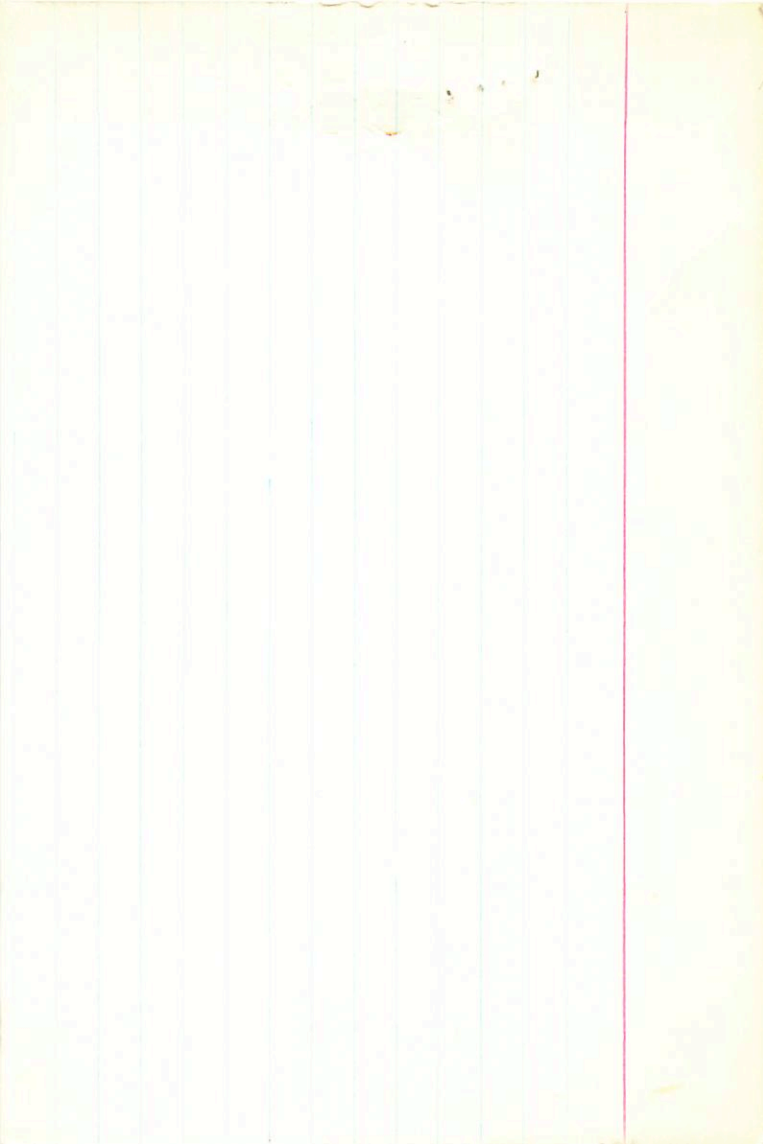
400026-0027

4036

4005-007

5.734

2375 4845



101 PNC

455

9766

1 33.1 +14 24

89.5711

6.22 -04-20 +06 605

~~11/11~~

(040)

014 093 936 2712

086 933

172

1105

605  
-148  
7.5

N30  
10001 1002

(Van  
Van)

Van

-10.5 way

+0014  
1003-1006



32



455.000\*

1.000\*

33.100\*

14.000\*

24.000\*

0.003\*

-0.006\*

7.500\*

020  
021  
022  
023  
024  
025  
026  
027  
028  
029  
030  
031  
032  
033  
034  
035  
036  
037  
038  
039  
040  
041  
042  
043  
044  
045  
046  
047  
048  
049  
050  
051  
052  
053  
054  
055  
056  
057  
058  
059  
060  
061  
062  
063  
064  
065  
066  
067  
068  
069  
070  
071  
072  
073  
074  
075  
076  
077  
078  
079  
080  
081  
082  
083  
084  
085  
086  
087  
088  
089  
090  
091  
092  
093  
094  
095  
096  
097  
098  
099  
100

52

1.550  
14.400  
5.000  
-7.000  
7.700  
347  
-10.500

0.775  
0.367  
0.514  
5.611  
-3.447

-0.600  
0.653  
0.451  
-35.624  
-17.093

0.169  
0.662  
-0.730  
-10.092  
1.300

32

273.2

46 ✓  
G. S. W. → 35 ✓  
Kuchen und W. → 6.40 - 0.17 - 0.11  
+ 45 10 + 3 Var?

G. S. W.  
6.30 (13) - 105 40  
868 2 Waren 00?

D. G. W. (S. W.)  
- 0.58 2 13  
203 9 15 2 9 58  
197 863 2 9 43  
444 113

M. S. 74377

Prüfung 09.5.16, 1071 00 Punkte 92

- 00 142 + 0029 W. 50  
- 063 230 892 2855  
- 0150 + 003 F. 144 905  
1329 4229  
1329

890 2855  
903 2951  
418  
1317

- 0.2 - 0.67 229  
209

ml (12)

- 0.27  
- 0.27  
- 0.27



33

1.600  
45.200  
-21.000  
-1.000  
6.000  
158  
0.000

0.770  
0.045  
0.636  
-54.227  
-7 -8.594

-0.612  
0.335  
0.716  
41.323  
+0 6.549

0.181  
0.941  
-0.286  
-17.141  
-2 -2.717

BB



7965

4800 SA, SA 01 39.6 +67 47

478

10221

-17  
+7

-1 +0±1.5  
+0050 -0020 0304

~~10531~~  
~~10521~~  
~~10511~~

~~1052-006~~

+40

185 784  
330  
11

Reut

5308 -10.34  
738 0.1

16.5

-058 181 773 2782 6

~~178~~ 165  
~~390~~

~~1728~~  
1714

2498

1116

611.2) = 00

115118 0086

6.4

$m_y = -0.05$   
 $v_0 = \frac{5.6}{5.65}$

FR5

1.66  
4678  
50

+1509

1052-1019

132  
-11  
535  
+3.0

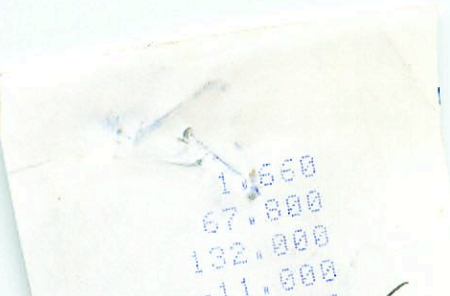
+410

+3.4



34





1000  
1000  
1000  
1000

052011

484

0108

1262

7262  
0.54

34.0

+70

22

1122

+0107 327

1122

-107 ± 1.9

9624

0770

10934  
10156  
10154

15074 30.1

9624

0094

1003

1624

214 -2715

+535

10157

1555

4550

008

0.804  
54

1555

4550

542

803

1553

1.64

+704

1077-012

69

+1549.00

-13

1016 49-10

1.170

1544

4.65

408  
DA071  
0107

+82

1545

+6.08077

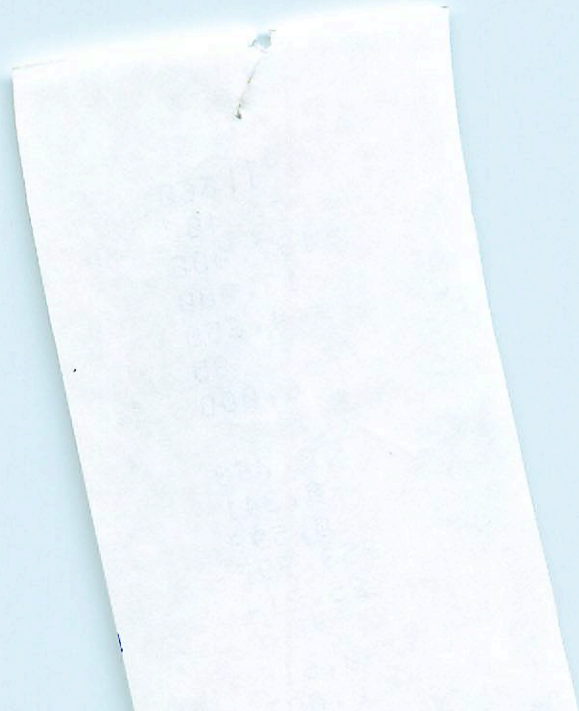
0108  
6.18

1.203

1546

~4970

35



1.668  
78.488  
197.888  
-13.888  
4.658  
85  
6.888

8.763  
-8.241  
8.599  
253.997  
25.214

-8.616  
8.887



480 1 390 +70 22

10250

2054

390

5.18 - 0.04 -

-015 146 1039 2.867 JG  
-018 151 1021 ~~2.~~ et al

016 148 1030 2.867

+6.7 component 016 148 1033

143 1033

286  
1319

+6152 -0078

6  
+6152 -009

+0.3

490

1

35.2

+35.00

00

10350

2064

~~3.49~~

~~-0.08~~

~~-0.20~~

35.50

Bud 51

7943

4991 2467  
1241 068

450 139.2 +35.00

10390.

8970-D

0532  
0149

0539  
0122

102 564-0.05

565 9989  
0466

2415 2915  
6709

5994 2737  
0810 1634

-039 147 832

2544  
2886

+575  
1083

+0040 -0285

136 840  
270

2886

844

4941 2419  
006 9 16

W350

1012

100062 -0241=124

mv 10.7

100062  
10482

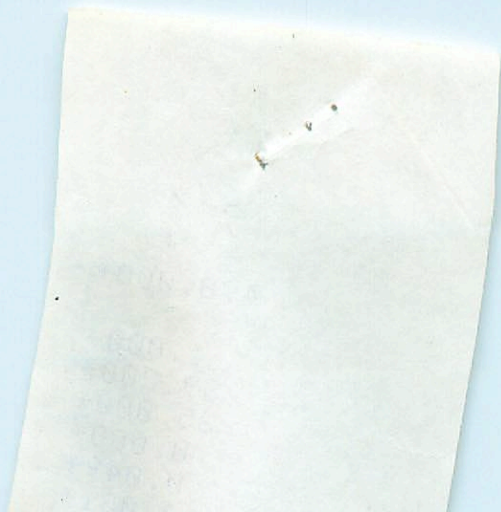
+00413-0239  
-00013 -0243  
00400

4.9

130140  
1049-031

0492  
0496-0282

36



490.000\*

1.000\*

39.200\*

35.000\*

0.000\*

0.049\*

0.031\*

-099

+62

-037 114 292 2.752

161 206

123

10161

47Y

1 36.5 -25 17 .. B9Em

$a = -098$

$n = 877$

165  
171

6.72 -058

103

117

858

869

234

1103

2.742 - 2.545

prob  
2.742  
+17.5

minidog -1.493

+15.162

B(=00)

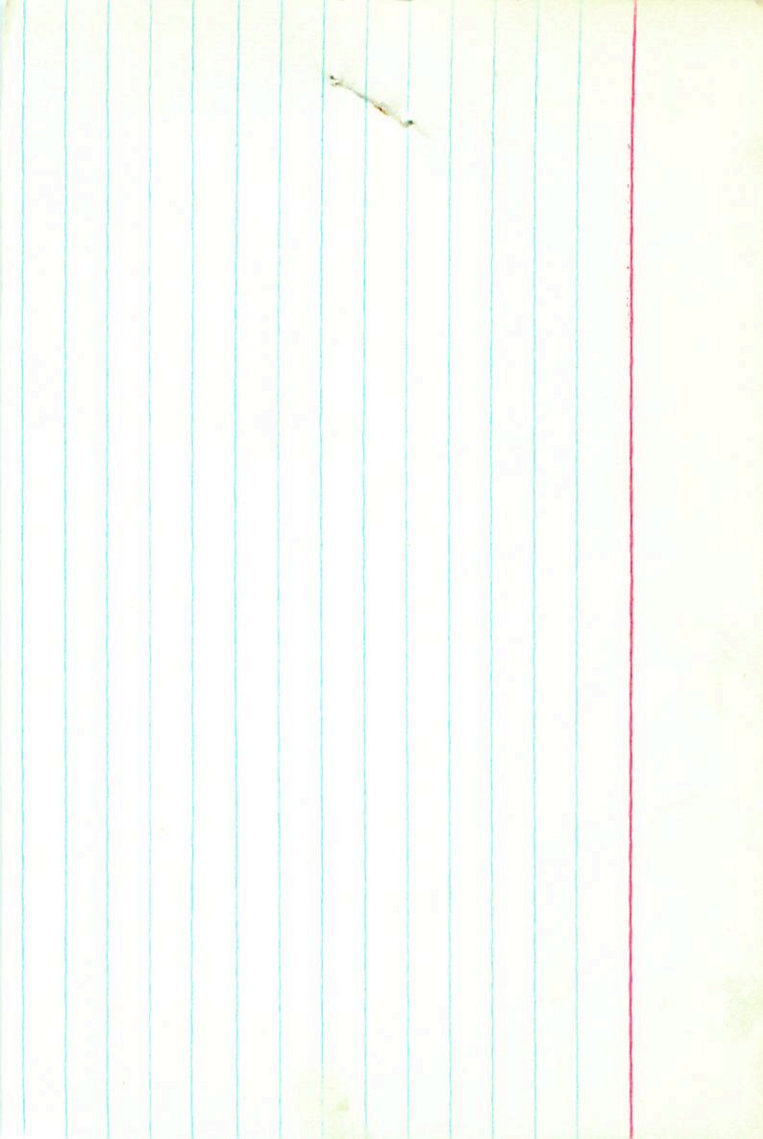
-001 +014 GC

1000 +014 FIS4

+002 +010 +622

$m_y = -0.15$

$r_0 = \frac{6.7}{6.95}$





20 35.1

26 35.5 +45 09

46.5

A Ia?

9994

1977

6.30 +13 -105 Abt Koshun

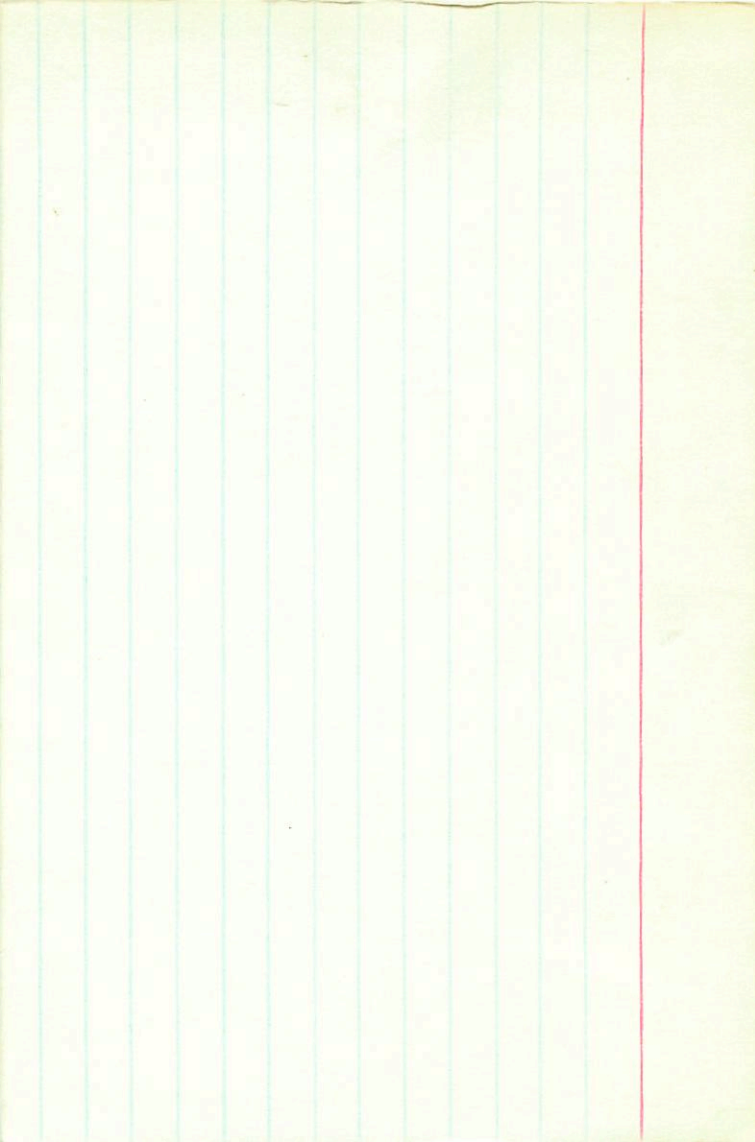
low Z Si Z  
-298 9544

new

low Z

-610 -792

+32



498 ③ 1 398 -37 05

10538  $\downarrow$  (16)

LOB (546) +77+34 +70  
MM123=33 +6+7+35

-01(-02) (eye)

915

Spand 45 5.69 004 130 1.063 2.881 910, 4, 12, 9②

$\frac{260}{1323}$   
 $\frac{1323}{1323}$

-040 14311052

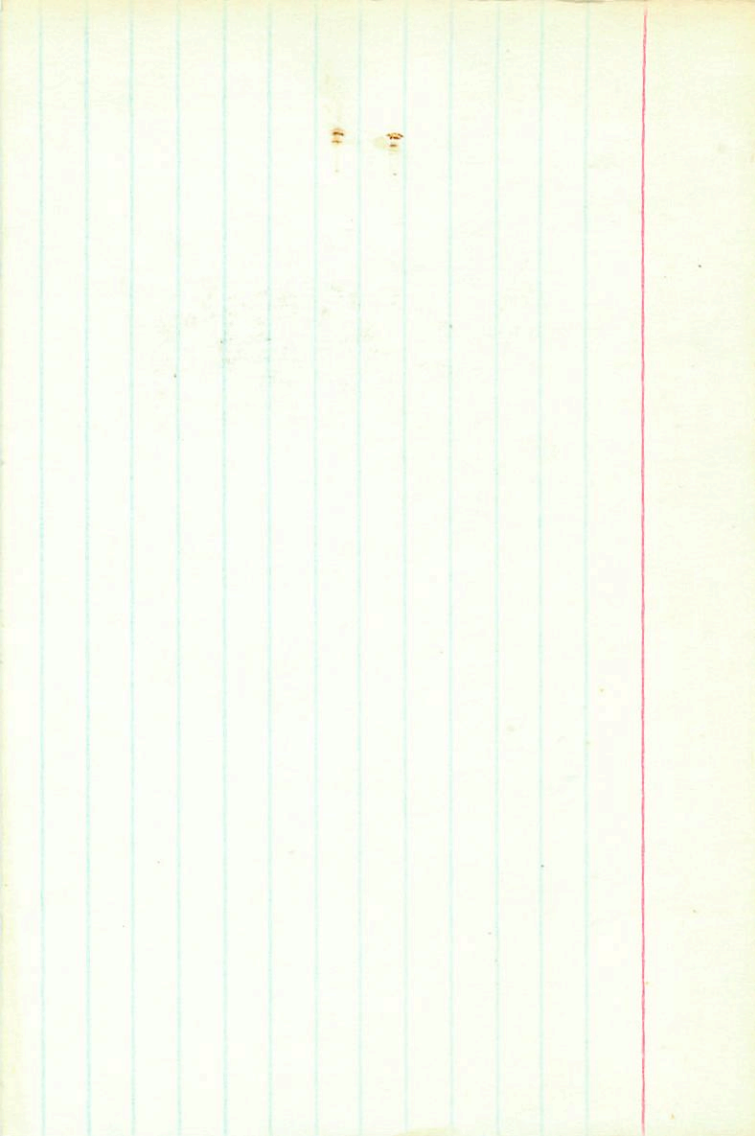
125

+20 Str 3 Var  $[m_1]$  130  $a$   $\frac{-2}{-0006}$   
+13: 0  $[c_1]$   $\frac{1.062}{1.322}$   $a$  +050

+0.25

+16 Var

$\frac{134}{10}$



W 913 7650 1 35.5 +45 09 6.3 +3e

GL1977

HD9996

420  
450  
1535

30.373 1910.2  
130  
1511

~~0035 ± 7.5 + 010 ± 6.3  
- 0032 + 004  
- 00033 + 0.012  
0035~~

46.05 1907.5  
60  
45.39

~~35 30 005  
- 012  
19.3~~

0.19  
20.285  
30.475  
- 110  
46.3  
170

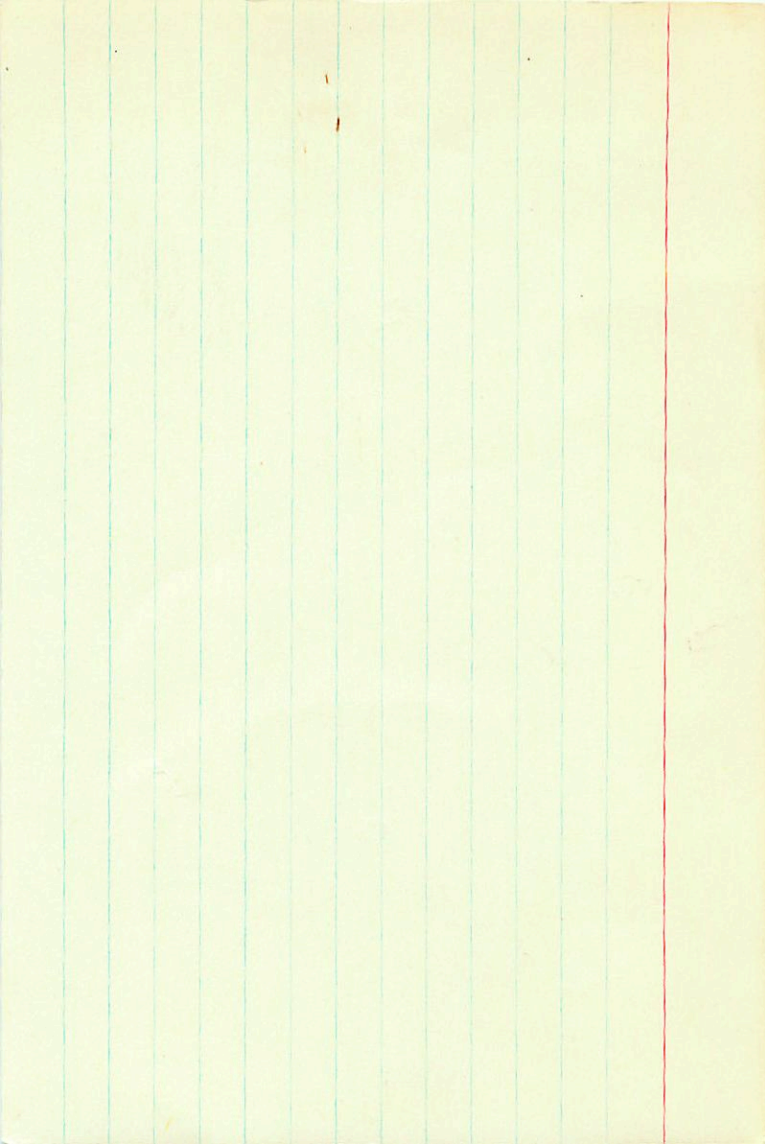
6.3  
36.008  
45.26  
45.4

8 45.28 1925.3  
26  
45.44

30.50  
- 010  
490

45.2 1929.5  
- 18  
45.02

772	050	634	-128	+0028	-053	-21.3	+1.9	-19.4
-610	336	717	+1012	+0191	+1203	+20.4	+2.2	+22.6
177	941	-290	-0294	+0535	+0241	+4.1	-0.9	+3.2



14010538

~~35.8 -37 05~~

+13! (6)

+203546

5.71 0.00 +1.48 AVE

-040 -025 15

~~Wid Dnd~~

+16 Van

-0027 -016 1130

-0029 -017

~~-0033~~ -028 80

-0347

-0030 -019

-032 -021

1.64

.036

-37.1

-40

2

5.4

+16



423506 ~60375 ✓ -040-025 +13015 ~-7.8-055  
017-006-036 014 014 -159 +10.4 +9.4 +4.4 015

+10.4 -8.9 -14.1

-13.5 -1.6 -14.1

23





1.660  
-37.100  
-40.000  
-21.000  
5.400  
120  
16.000

0.763  
0.644  
0.056  
-179.548  
-20.788

-0.616  
0.749  
-0.244  
18.579  
-1.669

0.194  
-0.

2 Pers

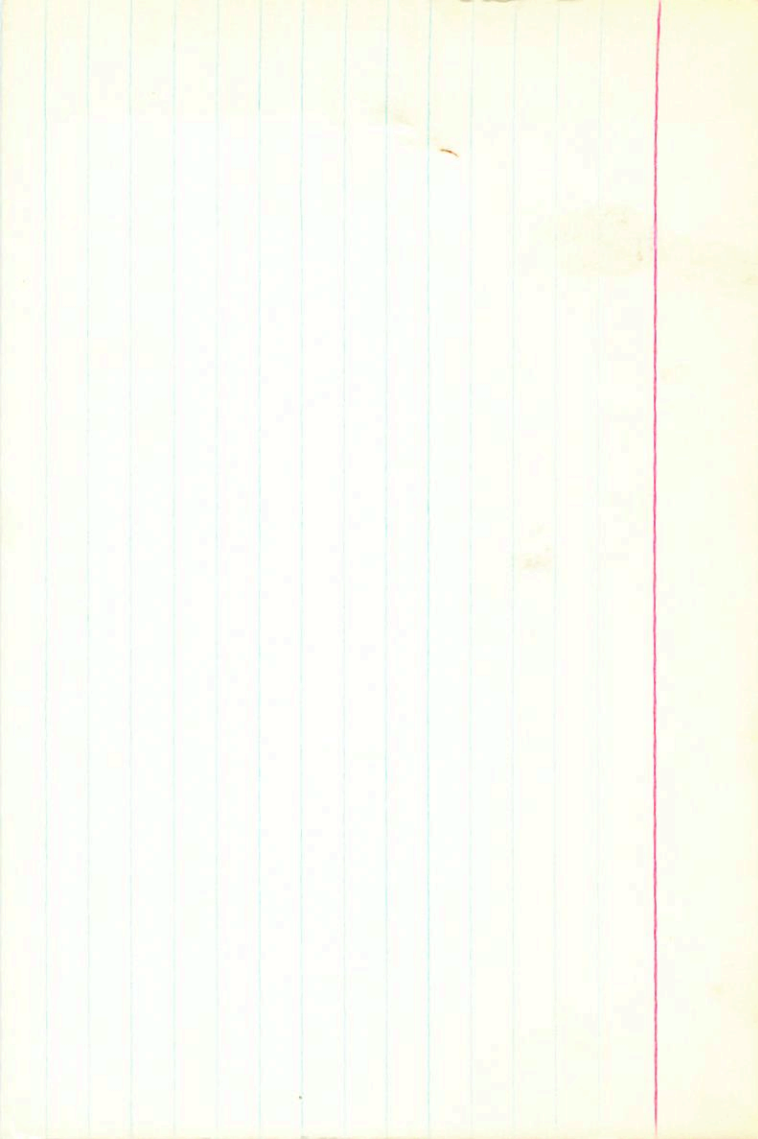
1 45.0 +50 33

536

11291

-032 124 550 2.763 Cr  
- 8 005 703 ~~200000~~

Vanley





38

145

448 -50

1411

17-97-480  
65-64  
1337 000

8192 8422 0466  
5935 3357 0120

9603  
916

AD51507

8 Ani

M9

5-45/6

50.8 +19 03

A 13.7 6

B -0.6 6

+2.2 6

+078 -107 66

11502

105-3/4

495

B9E

4.53

A1P

8"

2291

4.2 } 9" }  
4.4 }

+005-7 -097 N 30

+0055-41.6 -103 E 114

+0060 -110 = 915

~~7369~~

465 -25 142 924 2045

462 -79 224 994 2177

085-110

75M3

9845 9330  
1758 6802

9845 7338  
1758 2502



462 777 329 546 +078 -107 +2.2 -035 +1 -429 ✓  
-036 016 069 -031 -024 403 +2. +2 +1 012

$$\boxed{0 + 35 - 39}$$

$$\boxed{+13 - 15 - 24}$$

$$+1 + 21 - 23$$

02.

$$\boxed{+7 - 26 - 15}$$

✓ Ari

545-546 1 50.8 419 03

11502-11503

2250-2251

462

+B 3.88 -04 -13 J

A051507 8.7

Station?

$\Delta m = 0.06$

-0416 200 982-2849 et al

Bud 51

44.10

74113

15.46 188