

73666 40 ml

5706

8 37.3

+20 09

6.5 A2 +33.88

-0025 ± 2.4
-0026

-017 ± 2.2
-017

11889

19.088 1894.4 +20 8 56.54 1889.4

138
2.26

57.57
1.03

NO₂ ml

19.100
16
116

56.72 1934.2

33
57.05

19.102
26
133

56.77 4
56.81

1939.80
6800
34.0

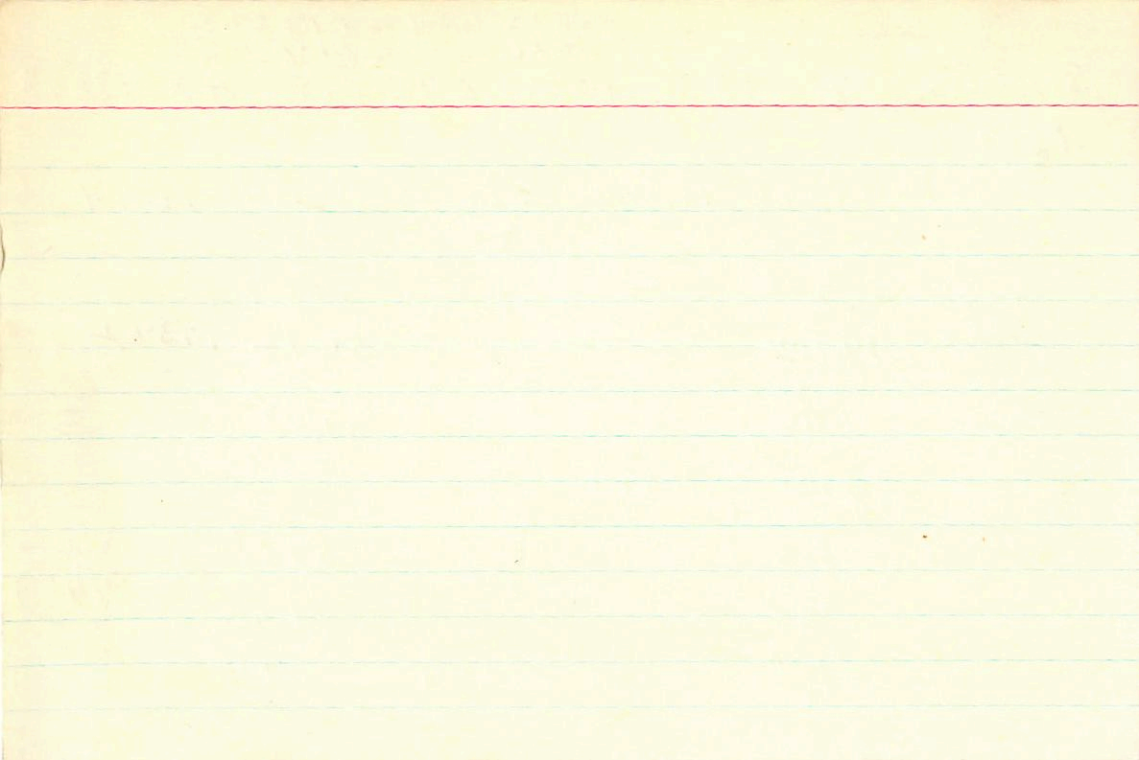
39.4

125
-101

56.93
-1.64

56.81

34.0
44.6



73666

8 323

+20 09

661
1979
10/10

451254

(4000)

661 0505 159 1451 2.888

19.088
19.088
19.088
19.088

9446

19.088

1000

1025
1025
1025
1025

24-110-22

19.088

181

1000

114

186

1000

110-110

10024-016

10025-0146

10349

1034-010

02800

0281

14.008

1100

15.577

10013

10345

1018

10360

110

15.554

10065

10000

10000

-0033 ± 4.8 -030 ± 5.0
 -0020 -035
 73712 8 37.5 +19 32 6.8 Ag 45m +31.2
 -0017 -024

5710

11998 28.372 1904.8 +19 31 36.93 1904.8

+19.2069
 10023016
 149
527

90
 -0023
 1.36
38.29

28.444
 20
464

26.0
 -0372

36.99
 26
37.25

1934.3

$-037 -025$

37.25
 61.67
30.8

2.409
26.072
 28.481
 40
441

-00255 -031
 -00263 -0245
 59.14

53.76
 15.42 1927.37
38.34

5705 -9785
 8213 -3118

38401 36.85
 725 10
 729 36.75

37.14
 21
37.35
 37.30
-99

0359
 0136
 110.7 5070

34
475
 470
-051

675 141 180 937 2.256

229
908

220 64
25

152
150

25

15029-014 Prunella

8 37.6 413 44 Am

(E. Inc)

3424

78731

11904 Prunella

~~033~~ -015

(A51316)

(190) (191) 2152

Birdhouse
A5068
very much the same

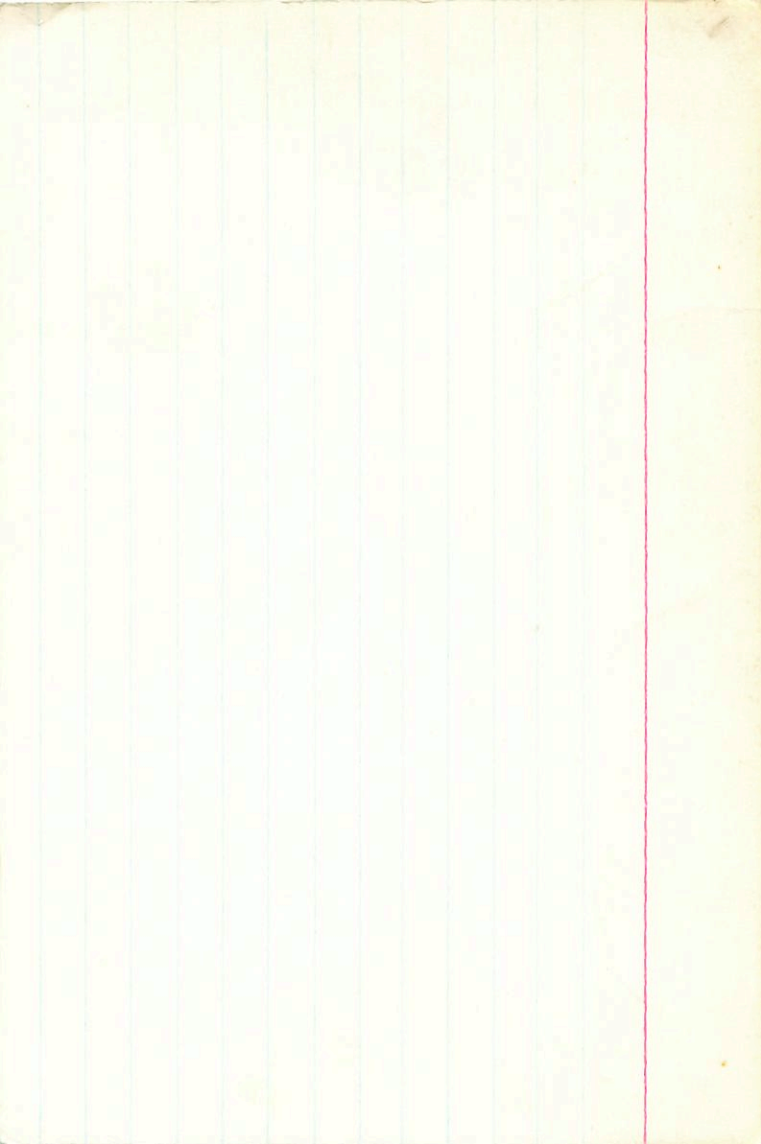
3650 (11050) 22.22
34 (10800) 27.17

A.E
5300 548E-SEES
5220 5155-6895

not 23HT
M 8 100 23HT
dms

1011216
21

41 woodpecker



73785

8 37

50

+19 57

685

4911

1400212

39

-00237

-0184

30

14

5654

-9504

0307

9220

-3112

0036

+805

0056
625

-00198
00204

-0170
0154

-0290
~~-028-013~~

BR

6.85

709 209

1020

28.5

A911

(542)

(855)

124

hic

923

1141

101

1005 8000

73819
57222
1108
38.1
+19
46
ASm +28.1
2

-0025 ±3.0
-0022
6.5
-015

11921
4.382
1896.7
+19
45
32.16
1894.4

1105-011
035-011

~~00249~~
~~00210~~
~~00214~~
24
14
28
20
24

5784
9158

9554
2588

1934.4

33.05

32.12

32.38

32.33

1940.97

753.9

37.7

43.3

41.0

4.381
25
406

1472

475
-090

4.244
31.67

349.7
349.7

-0024-015

-00244 -0134

-0352-035

273

628

051 151

107

288

(222)

(1087)

229

424

141

231

224

111

3:00 PM 170.285

73574 8 35.0 + 200.03

14950 100000

5737 1057.938

98 F₅ = 5.42 137

100 - SHCM

10254 - 0.166

0354

510 - 530

5746 - 952

8469 - 3052

0376

6036

12.5

0028 0.03

-0025 ± 3.1 -019 ± 3.1
-0026 -024
-0021 -017
2.0 567 + 30.56
-0.3 0

+20 3 13.01 1853.9

1895.2 + 20 3 13.01 1853.9

284.13

12.84

52903

+20

981

35.2

12.84

982

093

1324

-01

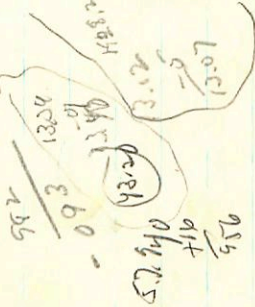
1340

4320

3.126

-5

13.07



12.74 1933.0

23

13.12

1929.87

32.61

17.55

14.66

-1.46

13.00

13.21

30.4
36.5

13.12

89

-

14
29
1016 } -0148 EC

10120 } -0134

10121 } -012

-0185

110-310
-015-011

0205

0050

+6.94

0005

717

5796-94CS
5149
2508-3052

+

A 8 III (mm)

75152 8 43.1 - 55 29

550729 182 - 22 26

6612410 100 156 210 244 256

2731 675 166 210 210 244 256

-8.0 104 198 107 224 167 244 167 244

6.5 44 24.5 - 55 40 224 167 244 167 244

4 44 24.5 - 55 40 224 167 244 167 244

4160 - 137 4164 - 1664 4167 - 1664

678 14 202 442-2720 -070-1101-010

257 1226 -0120 -0082 0132 -0080

107 248 712 208 -4.2 -0684 4.39

0137 4.31 0137 4.31 0137 4.31

2001

270 270 270

104 198 104 198

678 163 202 244 270 270

104 198 104 198 104 198

983 3142 983 3142

1227 1227 1227

0137 0137 0137

4.21 4.21 4.21

1098 1098 1098

1016 1016 1016

1036 1036 1036

1104 1104 1104

3995
18-494

2450
+ 511

414.531
34985
29516
- 507
- 101
497

24.302
302
758

-0053
85.1

-00891
10/11
10985

-0092
1098

28.2

-0088
-0118
-0077
-0081

+102
+051
+091
+091

224
- 44
22.92

23.51
- 11
23.62

-28.32
22.97
- 54

5465

21.35
487
2122

13

24.212
+ 10
1272

18.18

19.63
- 22
18.41

32
17.1
166
110

32832
13133

+64° 3047

8 42.3

+64 18

533

8 50 25.6

+63 56.68

R R-F

1022-

0.64

958

Green. Dist. -173 -181

11.4 MO +8.7

-194 -142

✓

8486

-7006

2630

-196 -146

5251

-7136

-0027

0

-035

1412

28.85

1365

28.8

1362

28.5

1416

0322

2.45

28



A.	:	8.850
C.	:	63.950
A.	:	0.000
C.	:	0.000
CE	:	0.000
US	:	10
L.	:	0.000
U)	:	-0.642
U)	:	-0.323
U)	:	0.696
U)	:	0.000

3622

78243

G01217

9 03.5 -57 34

10² 3.5

AT III

22
25
20

-0035 34 +014 ± 6.3

27.994 1.3 -0050 1014 8.14 98.7

170
28.164
47.908
40.130
20028
-8
020
+14
021

-057
-037

+005
+010

9
9.6

35.5

9497

~~6509~~

0340

0010

1145

0034

0034

3131

7833

27.994

40.130

20028

020

+14

021

27.99

-044

-02424

-034

-030 +019

+012

+0155

+0155

+0155

1000

5865

8.65

46

9.10

8.70

47

9.27

+11.8

-026 +023

-022 +026

2.142

27.920

+14

936

6449

462

27.890

+14

405

8.65

9.86

11
430

701

27

4215

29

R.A. :	9.050
DEC. :	-57.650
1. R.A. :	0.000
1. DEC. :	0.000
STANCE :	0.000
MODULUS :	10
D. VEL. :	0.000

q1 (U) :	-0.672
q2 (U) :	0.733
q3 (U) :	-0.108
NP :	0.000
U :	0.000

q1 (V) :	-0.021
q2 (V) :	-0.165
q3 (V) :	-0.986
NP :	0.000
V :	0.000

q1 (W) :	0.740
q2 (W) :	0.660
q3 (W) :	-0.127
MP :	0.000
W :	0.000

79

80672 26908 3 17 45 - 47 76 70 N III

5612879 4182129 2024 175 86 VAC? 703 + 102 + 202

month 1/25

2204 + 187 stay
8061 + 300 20

2024

5945 - 6654
9162 3008
9124 9124
- 202 -

232
202

199 454
661 -

2024
9124
155

0316 2.50

1/25

46575

5.6

2160 ± 877

-0155

-128722

-0154

-1174058

4.2

47285

5.86

30

46681

4467

4249, 4677

780

-18

42.81

46206

740

38.6

+25

-10

39.89

231

-0156 -118

-01585 -114

R.A.	:	9.400
DEC.	:	56.450
R.A.	:	0.000
DEC.	:	0.000
DISTANCE	:	0.000
MODULUS	:	10
VEL.	:	0.000

1 (U)	:	-0.720
2 (U)	:	-0.147
3 (U)	:	0.678
4 (U)	:	0.000

LH 264

9

264 + 26 11

-1098 - 285

6720 - 9612 } 1086
7405 - 2712 } -916 NO
 } -945

0.1184

-1.13

1354
1353
1352
1351

1350

11 12
12 13
13 14

1350 1351
1352 1353

1350

1350-1351

11-12
12-13
13-14
11-12
12-13
13-14

11-12
12-13
13-14
11-12
12-13
13-14
14-15

3818 9 33.2 +14 37 A1 D

83023

13250

-00 2.68 +00 2.8
+37 +00 4.3
-00 2.7 +00 2.8

FL 6.36 +01 +03

72 624
148 980 2.8

152 3475 12.85
1.3

-0383
-037+009

9.51 +50 +03

320 175 376 2600 9.85

8801 -9183
4748 -3987

Bucks |
-043 +23.6

1244
+35
+9
5.6
+226

1.61

+0.8
5.55

$a = 0.18$
 $n = 0.48$

2.86
2.86

31

1



3818.000*
9.000*
33.200*
14.000*
37.000*
-0.040*
-0.007*
5.550*
128.825
23.600
0.139
0.575
31.494
-0.043
-0.455
-16.278
-0.146
0.680
-2.900

15

14.500
-36.000
9.000
5.600
132
23.600
-0.739
0.550
0.575
143.501
32.533
0.066
0.883
0.455
-0.373
26.373
-7.264
0.670
0.299
0.680
-0.057
-104.057
2.322

15

7 Leo
 83023 9 33.2 +14 36 6.2 -0026 ± 2.0 -007 ± 1.8
 -0031 -010 $+1m +23.66$

13250

6204 9.089 1893.9 +14 36 13.30 1889.1

ADS 7448

$\frac{146}{.235}$

$\frac{+43}{13.73}$

8.5 42¹¹ phys?

9.088
 $\frac{22}{.110}$

42.1

13.30 1432.8
 $\frac{11}{13.41}$

$\frac{7196}{36.0}$

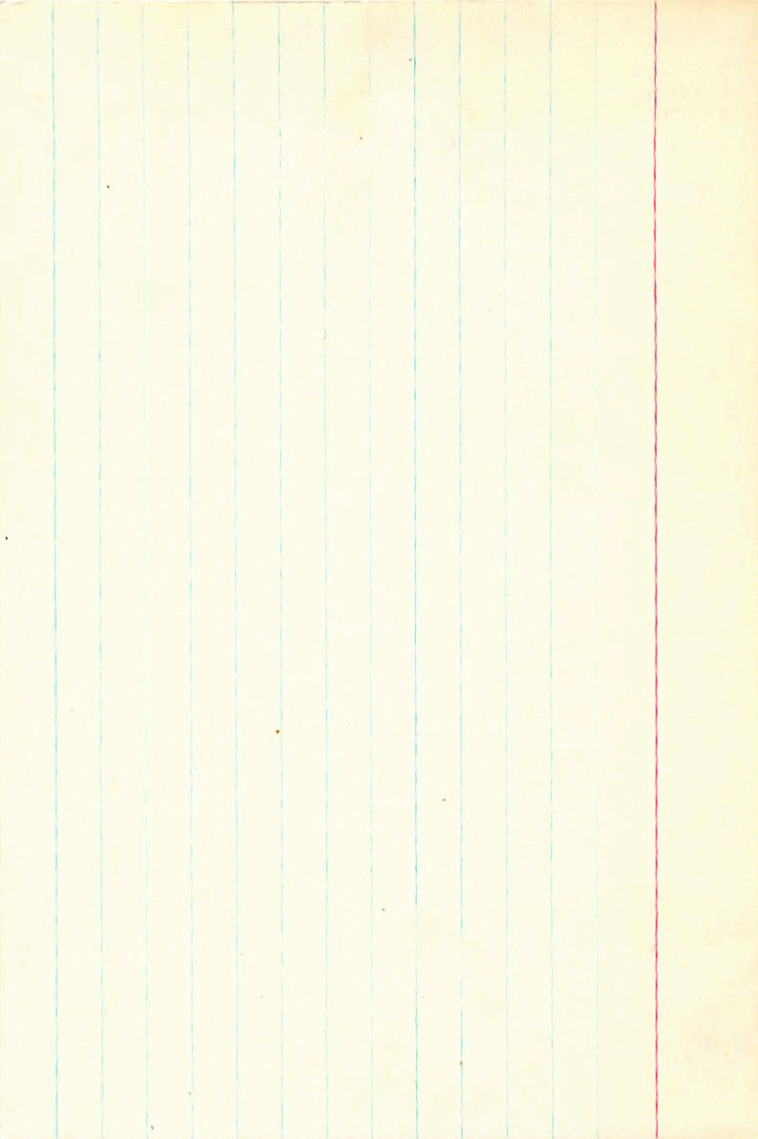
9.079
 $\frac{17}{.096}$

$\frac{103}{-132}$

13.10 1439.16
 $\frac{+2}{13.12}$

46.9

$\frac{13.20}{-.49}$



3830

9/10/1

9 34.8

+321, +30.2, +30.0

+30.0 a

-0046 ± 4.2 +038 ± 4.5 +033

8333 ✓

-00426 +032 ✓

45.174

57.0046

19.37

5.0

+028

-00439 +0033

204

-0039

1.71

+035

-0596

0.57 +033

45.086

(66.04)

18.56

+032 ✓

(264)

12
099

-13
19.09

12116 949 265 MF

1204 939 213

1.205 910

22027

4120

38.80

9.6

(64.76)

18.225

4128

-25.1

45.101

18.89

45.202

20.08

-63

19

-13

254

41

+37

120

19.0

13

20.07

5.25

45.230

(40.56)

20.21

+30

8325

-9864

0676

1

(40.56)

+26

5540

4619

006

231

(13)

19.85

+25.2

9.5

1.202 938 262 ✓

25

PM
DEC 1 1953
R.A. 9
DEC 1 1953
R.A. 9
AM
DEC 1 1953
R.A. 9

PM.	R.A.	9.600
PM.	DEC.	-25.100
	R.A.	-63.000
	DEC.	37.000
		5.250

Apr 5 Suppl

53332

9 34.5 -25 04 9 151 +30.08

HR3830

-0046 +034 5.9

-063 +038 60

-0046 +034

-047 +027

-0046 +034

-059 +033

-0046 +034

5.69 +1.08

YS.174

0040

19.37 5.0

+04

-1.71

374

2.07

45.230

(40.76)

20.21

-00485 +033

+1

+36

-00445 +034

231

19.85

060

2786

45.096

(64.04)

18.46

-058 +038

6988 5288

+12

-13

6194 4119

098

19.09

0640

45.101

(64.74)

18.94

+252

+18

-13

0069

119

19.02

-38

0086 5.32

592-806-424 906-055+033 1300-014-13 +148

038 008 044 010 604 ~~246~~ +222 -22 +16

-16 +31

015

-12 +41 +1

01

+35 -23 +4

-9 +48 +5

015

+42 -21 +2

007

-8 +19 +5

+44 -22 +4

007

-7 +51 +8

+47 -15 +2

83332 9 348 -25 04 5.9 g N1 +30.08

13287

6212

²⁷
-0035 +027 N30

-0045 ± 4.3 +036 ± 4.5

-0090 +03)

375

570 676 495 494

450

699

813

346

375

+030

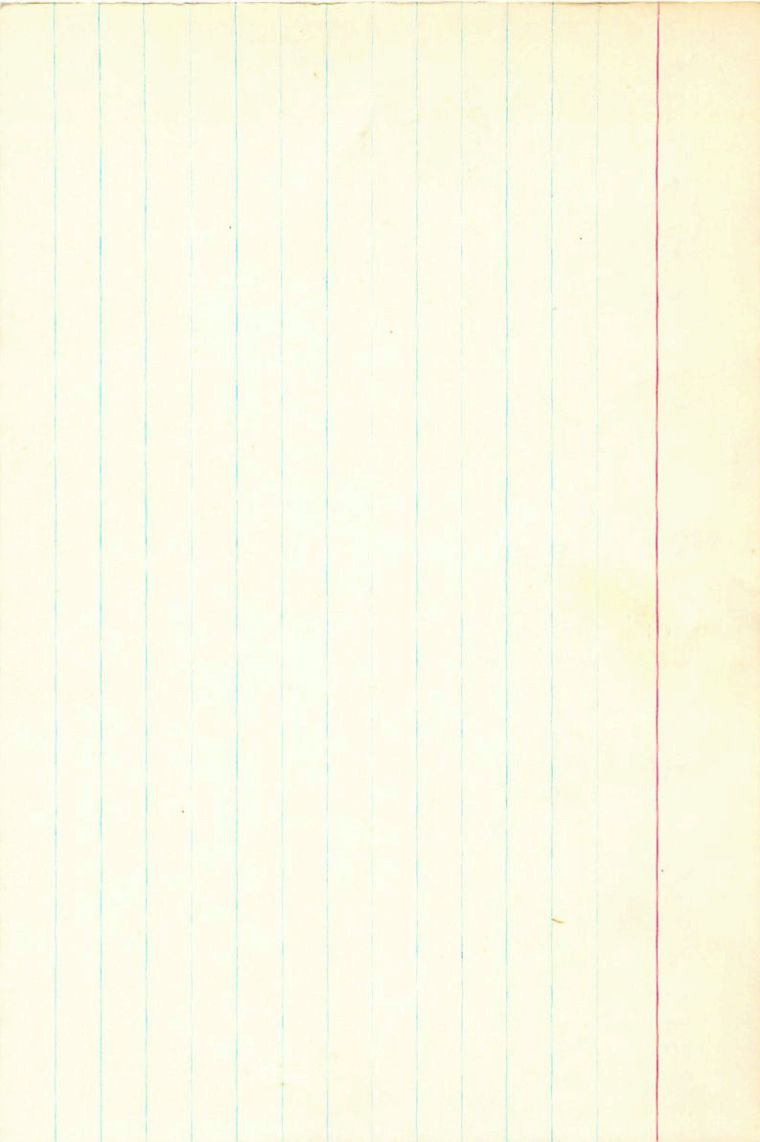
5.55

+010

1.216 99 265 MF

1.213 945

105



83329

13297

9 35.1 +1 55

-0074 ± 4.4 +017 ± 4.5

5.965

99.8

-0076

+016

15.74 99.1

$\frac{371}{6.336}$

-0074

+025

$\frac{-86}{14.88}$

5.744

67.56

16.25

$\frac{+24}{820}$

-25

16.00

$\left. \begin{array}{r} 9352 - 9924 \\ 6778 \quad 1235 \end{array} \right\} \begin{array}{l} 1141 \\ 0000 \\ -2.9 \end{array}$

5.717

69.74

56.69

$\frac{22}{91.9}$

$\frac{-7}{16.62}$

91.9

-0075

+020

0162

-00757
-1134

112 + 024

84261
13895

9.40.0

-65 17

37111-08

9663	-1574	00265	9.022	00.2	-0111	+025	9.35	97.9
1647	6530	1.35	475		-0105	+055	1.72	
		0089	500		-0100	+047	11.07	
		5.25						

-0096 ± 7.1

+033 ± 6.4

-0105 +050
+0525
-0644 -061 +050

59.017
20
037

42.08

9.65
-17
9.82

59.020 474 8.40
+ 027
8.77

25.075
34.150
225
59 225
195
20/205

25.24

19.22
49.75
9.00
-34
9.34
-05
9.39

04286 - 0412

9

734

-4

12

12.54 + 1.325

1172
1171

17

1088

-1571 + 125

723

-9743

5434

1352

2074

-0530

-345

110

0737

1167

+284

9238

9 556

20 32+

0730

85898

220 160

1009 200

Inventory

109-031

10990-201

138

12

3477

B-2

4345

ABX Ho

5965

7324

PR 0482

1228

1111

RB0

136

92471

1702

000 630 205

8054 - 9236

5882 - 2003

1230
0031

8203
4556
345



33

K. S. ...
 DEPT. ...
 S. ...
 TEL. ...
 STANBEE ...
 JOURNAL ...
 TEL. ...

1933
 1934
 1935
 1936
 1937
 1938
 1939
 1940
 1941
 1942
 1943
 1944
 1945
 1946
 1947
 1948
 1949
 1950
 1951
 1952
 1953
 1954
 1955
 1956
 1957
 1958
 1959
 1960

1961
 1962
 1963
 1964
 1965
 1966
 1967
 1968
 1969
 1970
 1971
 1972
 1973
 1974
 1975
 1976
 1977
 1978
 1979
 1980

R.A. : 9.900
DEC. : 28.000
R.A. : -135.000
DEC. : -31.000
DISTANCE : 3.470
MODULUS : 49
VEL. : 36.000

q1 (U) : -0.779
q2 (U) : 0.240
q3 (U) : 0.579
dU : 405.003
U : 40.871

0.127
865

1090-031 (Cable)
1090-030 (H)

86358 1090-031 (Cable) +28 00 FU

HR3536

GC1325

SB 2SP
1015 50.7

1090 1091 1092 1093 1094 1095 1096 1097 1098 1099 1100

→ 226 168 .550 (5) 505 → 2701

[m] 209 +6

209 171 637 @ Burn

[D] 545 +6
50P → 140 -20.4 +10.6

2.72

35P.

-781 241 576
129 965 -229
611 104 785

+4254 -6434 / 13860 +3424
-6709 -1238 / -2447 -168
-3360 -0187 / -3547 +158

+20.7
-8.2
+28.2

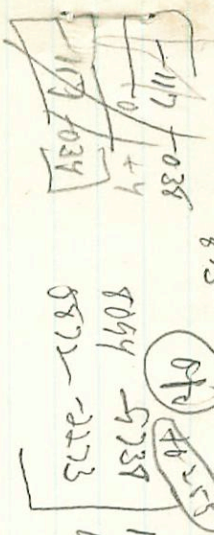
42801842

-02087 ± 6.9 -0344 ± 7.3

+36e

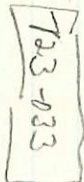
347003 1500.3-0091 -036 544671901.4 -115 -035 GC

32.135 ⁴³² 34850 2822 55.4 5150 ^{1.50} -116 ⁺¹ -035 →



1273
-02 92r -0358
-00935 -0364

34.115 60.05 54.14 -1238
24 5445



Handwritten signature or mark at the bottom right.

1988
1989
1990
1991
1992
1993
1994
1995
1996
1997
1998
1999
2000
2001
2002
2003
2004
2005
2006
2007
2008
2009
2010
2011
2012
2013
2014
2015
2016
2017
2018
2019
2020
2021
2022
2023
2024
2025
2026
2027
2028
2029
2030
2031
2032
2033
2034
2035
2036
2037
2038
2039
2040
2041
2042
2043
2044
2045
2046
2047
2048
2049
2050
2051
2052
2053
2054
2055
2056
2057
2058
2059
2060
2061
2062
2063
2064
2065
2066
2067
2068
2069
2070
2071
2072
2073
2074
2075
2076
2077
2078
2079
2080
2081
2082
2083
2084
2085
2086
2087
2088
2089
2090
2091
2092
2093
2094
2095
2096
2097
2098
2099
2100

M. R.A. " " " " " "
R.A. " " " " " "
DEC. " " " " " "
R.A. " " " " " "
" " " " " "

20.200
20.000
0.000
0.000
0.000

86322 9 57.4 +75-00 8100 +6.48 (ms)

GC13749
WG374

U. 50 +1.05 +54 R1 III R

HLIS 30198
L3MS 31108
UBMS 81108
FLIS

-042 ± 24 -040 ± 24
1.50 974

22248 985

88.04
+12.50 +14
5 M.T.W.

Flora Camp

1321 -1407

DR

-055 -550 -050 -43 GC

-053
-058 -037

656H
-0027
-0R6

9447 -825
-564

Flora Camp

11504

1130 -040
Flora Camp

Flora Camp
1130 +1.88

1440
573

35

1163 886 112

3953

9

58.4 - 56 yr

RO 84
79.8 (2)

89031

1.1 26 8.1 10.5
10000 + 1019

1007840 + 1001 26.4

52.29 ✓
36
650

10057 20.64 55.1

10063 + 1050

2114

10063 + 1024

7.50 + 1047

24.20

10059 + 1024

1.213 14.8 ✓
57125
488

14.8 ✓

105

115 1110 100

113 1117 804 04 113

110 1116 40 09 1126

Faint background text and grid lines, possibly from another page or document.

R.A. : 9.950
DEC. : -56.700
PM. R.A. : -87.000
PM. DEC. : 28.000
DISTANCE : 5.200
MODULUS : 110
RAD. VEL. : 9.800

q1 (U) : -0.784
q2 (U) : 0.590
q3 (U) : -0.191
dU : 255.920
U : 26.192

q1 (V) : 0.135
q2 (V) : -0.138
q3 (V) : -0.981
dV : -48.846
V : -14.972

q1 (W) : 0.605
q2 (W) : 0.795
q3 (W) : -0.028
dW : -31.528
W : -3.733

36

120 III

6.57 120 III

11 02 23 -48 1/2

87540

6613955

8503 + 025 Sky

Any #

-10309
-00779 + 0266

+0464 + 0248
+0264

-60497 + 0287

6.86 613 354 504
(575) (381)

-0460
[6613955]
sys

-6497 /
[-0417 + 032]

0525
-0018
-1.35
0062
6-03

(023) my = 705

9576 - 8550
20978 5218

1171 956 145

1.192 863 157 (2)

p₀ = 7134

-0060 ± 80 +031 ± 6.3

237716 984

-0044 +026
+052 +020

1/106 93.2
-1/76
1.282

24053
3

237002
703 64.56

10463
-223
10286

237164

5536

1/101
-50
1.051

-13
586

-00506

3A

D. VEL. : 0.000
 MODULUS : 10
 STANCE : 0.000
 N. DEC. : 0.000
 M. R.A. : 0.000
 DEC. : -48.200
 R.A. : 10.000

U : 0.000
 U : 0.000
 U : -0.115
 U : 0.297
 U : -0.294
 U : 0.000

U : 0.000
 U : 0.000
 U : -0.938
 U : 0.015
 U : 0.125

U : 0.000
 U : 0.100
 U : 0.692
 U : 0.298

Lt
 50

R.A. : 10.050
DEC. : -48.200
1. R.A. : 0.000
1. DEC. : 0.000
DISTANCE : 0.000
MODULUS : 10
D. VEL. : 0.000

q1 (U) : -0.794
q2 (U) : 0.597
q3 (U) : -0.115
dU : 0.000
U : 0.000

q1 (V) : 0.152
q2 (V) : 0.012
q3 (V) : -0.988
dV : 0.000
V : 0.000

q1 (W) : 0.588
q2 (W) : 0.802
q3 (W) : 0.100

333

10 6.0
0.9
m = 0.05

h.g
h.g
h.g
R 5.0
5.64

22.1

(97) (166) 11.7

10.1 7.5 6.6 9.1
15.1

338 4.8
3.4 3.6

12.4

~~10.5~~

10.5

10.5 10.5

10.5 10.5

10.5
10.5
10.5

10.5

10 10.5 - 5.5

10.5

5.88
7.10

5.88

5.88
0.770

0.10 5.15
0.22 6.78