

42 Bod

035
030
008
005

006
001
017
027

75
14

803 55
39

2794 112 175 915

2795 099 190 978

2796 120 185 939

2792 120 153 957

31
163 75

2794 157 177 901

2794 123 185 920

2791 104 175 939

2792 157 196 870

2794 122 182 933

263 254 263
6 65

2769 185 162 892

2770 167 170 824

2768 163 161 874

2754 175 151 873

534 576
2753 158 186 806

2754 170 169 799

2754 206 151 766

0.1 2794 115 175 955

0.2 2793 130 170 910

0.3 2770 165 165 865

0.4 2755 190 190 800

13702635 [V] 10.4

YZB00 15 22 +37 02

413

537

-013 -027 Check

^d
D.104

P

-510 +814 -277

+0314 -1042

-0728 -59.2 -39.1

+667 +578 +471

-0411 -0753

-1164 -94.6 -62.5

-544 -055 +838

+0335 +0070

+0405 +32.9 +21.7

+6.3

-10.4

-19.1

Ambo

Woolly alibi

-22.8



1
808.00
808.00
808.00
808.00
808.00
808.00
808.00
808.00
808.00
808.00

808.00
808.00
808.00
808.00
808.00
808.00

808.00
808.00
808.00
808.00
808.00
808.00

808.00
808.00

808.00
808.00
808.00
808.00
808.00
808.00

808.00
808.00
808.00
808.00
808.00

808.00
808.00
808.00
808.00
808.00

808.00
808.00
808.00
808.00
808.00

15.400
37.000
-16.000
-27.000
9.000
631
-22.000

-0.497
0.820
-0.284
-74.796
-40.710

0.666
0.571
0.480
-113.390
-82.488

-0.556
-0.049
0.830
39.950

9.0
631
15.400
37.000
-16.000
-27.000
10.000
1000
-22.000

-40
-0.497
0.820
-0.284
-74.796
-68.312

-83
0.666
0.571
0.480
-113.390
-124.333

46
-0.556
-0.049
0.830
39.950
21.027

8924 15 23.6 +19 39 60 -3.38

20745

137510

6.28 +0.62 +0.20 2 20"

-0042 ±4.4 -013 ±3.3
-020

38.223 1900.9 18.54 1896.4

$\frac{206}{419}$

$\frac{70}{19.2}$ -86

38.246 ~~156~~

18.39 1939.43

$\frac{17}{243}$

$\frac{4}{18.43}$

+0011 ± 4.6 -030 ± 3.0

137557 15 23.9 +18 21 7.8 dF4 -6.37

20752

8926 52.310 1896.6 +18 20 42.79 1887.5

AD59634

-587

8.4-84
1.1

51.723

+188

4467

43-91 1934.6

52.287

1.5
302

9
43.52

83

31

31

31

137570 15 24.1 +10 13 7.1 9M2 -53.08

20757

8929

-0016¹² -019¹² N30
-0014540 -019 ± 7.5 RC → N30

508

457

34.5

6.89 + 1.64 + 1.90 (2)

6.05 + 0.80 (2)

+310

5.65 + 1.05

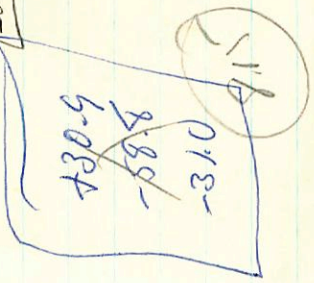
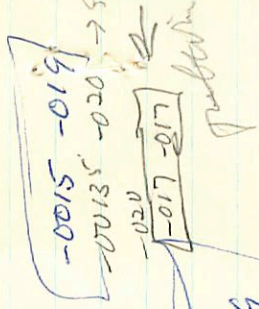
-56-12

-31 + 2

4.60
350
810 = 420M.

-0015 - 019 N30

-00135 - 020 FXV
-0199 - 019 - 017



137570.000*

15.000*

24.100*

10.000*

13.000*

-0.018*

-0.017*

8.150*

426.580

-53.000

-0.006

-0.623

30.375

-0.115

0.172

-58.290

0.021

0.763

-31.541

2

2

CARTRIDGE OUT
CARTRIDGE OUT
CARTRIDGE OUT

15.400

10.200

-17.000

-17.000

8.150

427

-53.000

00225

-0.497

8.21

0.603

-0.623

-9.198

29.117

109.0

0.666

0.726

0.171

-111.326

-56.559

57.9

-0.556

0.330

0.763

17.454

-32.991

32.8

2

Way 630

9th

7613

13663

15 248 -25 00 2400 +55230

① 542

2402064

~~0.0004~~ -0.025
+ 3 + 59

b = +260

R A-Z

~~0.0001~~ -0.18

746 + 121 + 0.77 709 + 24

⑤

~~0.001~~ -0.18

2.55 + 1.17 + 0.15 2309 + 34

-494 133 -859
446 643 -276
-559 709 431

+0020
+0039
+0021

-0.113
-0.597
-0.472

-0.092
-0.020
-0.100

-0.050
-0.622
-0.579

-47.2
-15.2
+23.7

Med m-m
+1.0 5.25
0.0 7.28

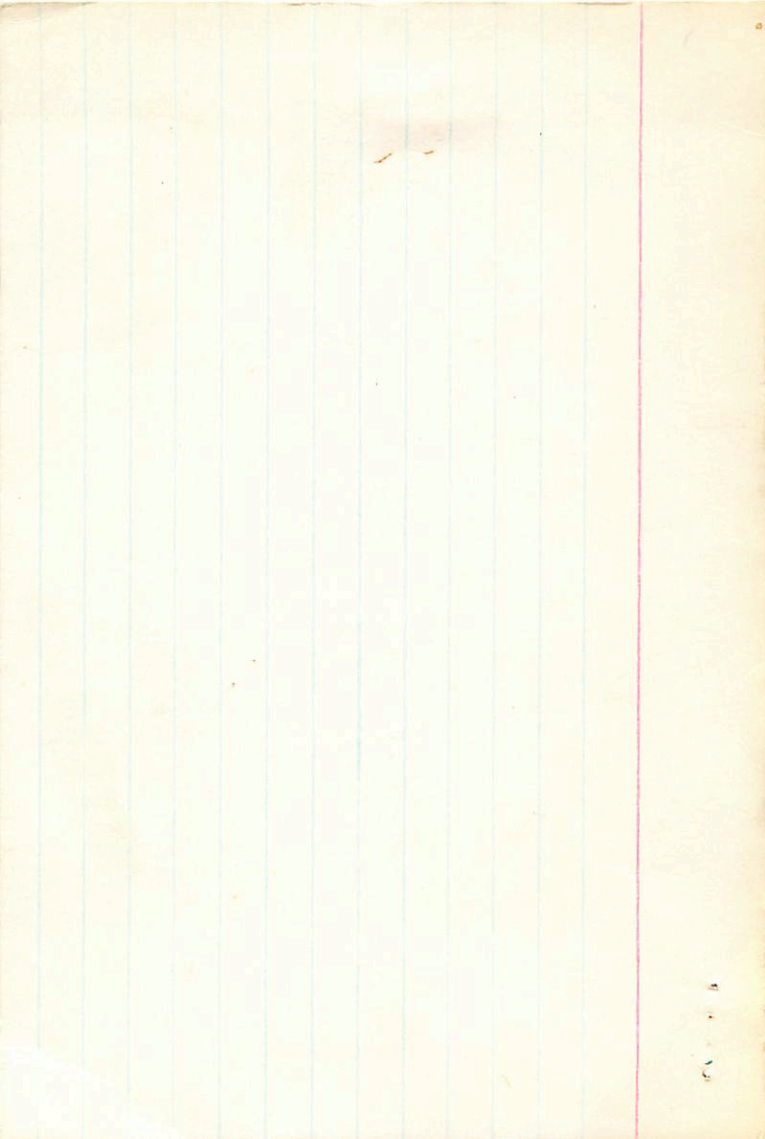
Parents
190
280
285

✓ w
-49 -26 +15
-50 -33 +18

680
644
610
610

420
423
410

630
623
610



H 203763 15 248 -25 00 825 1550 ✓

673 5
623 77

250202e-

7.54 + 1.12

~~013~~ -0.23

paper
leather

(17)

+ 0000 + 0.00 - 0.20
~~0000~~ + 7
+ 3 - 0.20

(1010)

70007

35000

-454 133-859
662 693-276
-559 709 431

~~034~~ -0.126
~~034~~ -0.557
~~034~~ -0.072

+0512
-1491
-0765

+1844
-2310
-23.5

-47.2
-15.2
+23.7

300m

5200
-025

2.46 + 1.21 + 0.77 ①

7.09 + 0.36 ②

-0360 -10.6
-0343 -10.3
-6937 -28.1

-58
-26
-4

-51.6
-38.2
+0.2

0.39

24/12/84

~~-012-0064~~

~~1~~
~~-012-033~~ -03C

-0003 -012

Wanda F143
-0004-011 → F124

-0006-0118

+55.0

27

3W +55c 00 5e- 8.4e 51 31978/

480e104e-

- ③ 7.88 + 8.11 + 8.22
- ④ 5.8.04 90.4

250
7
94.8.05

1592 CARD TEMPORARILY REMOVED

21.153
28.848
50.905
5.70
1.20

50.054 133.33

31.57
16.41
48.05
7.21
8.6.94

94.8.4
4.21
520-
520-
520-
1920
1920
1920
1920
1920

1920/47

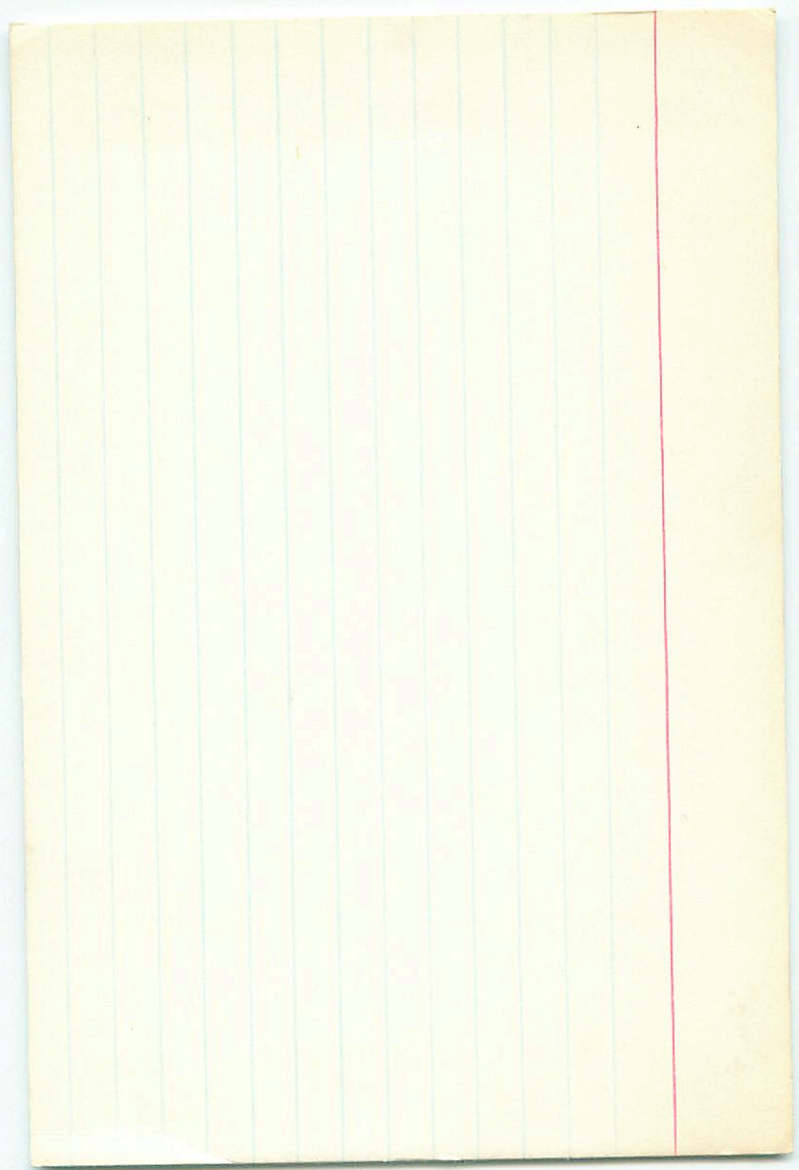
46.74

1920/31 50.74

1920

sent to be recd 24. 9. 70
CARD TEMPORARILY REMOVED

Taylor, H. D.
The adjustment & testing of
telescope objectives



32-bit

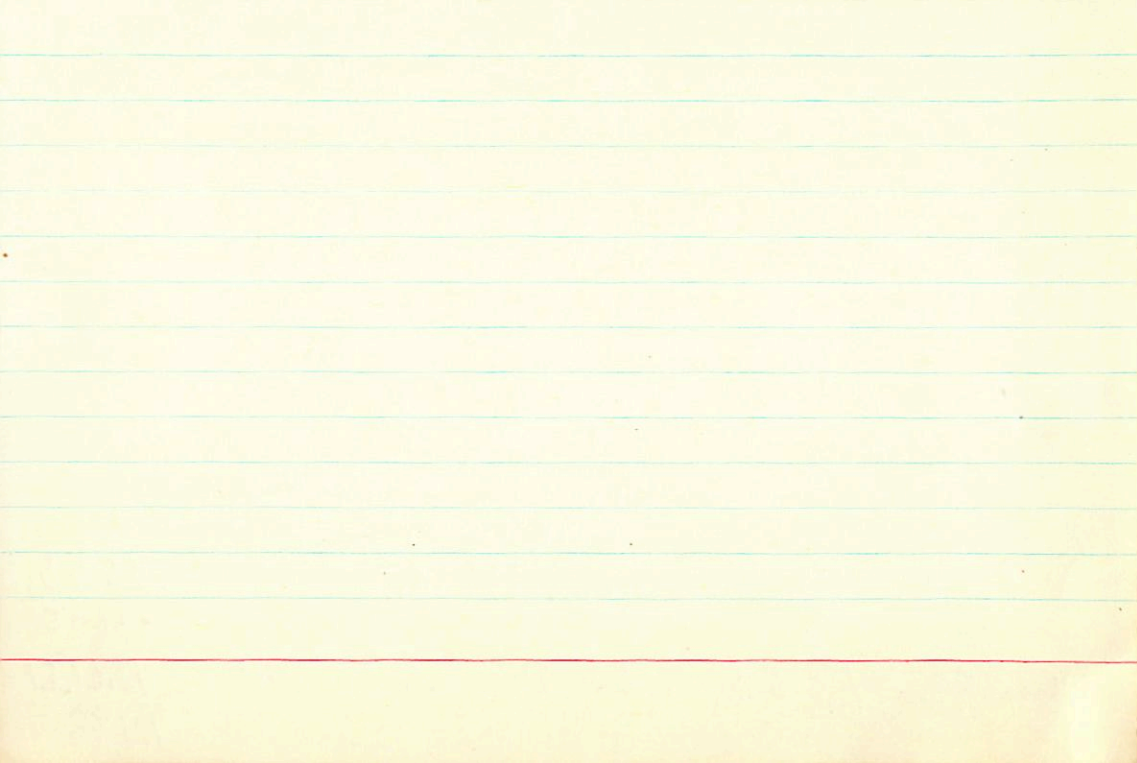
137744

20782

8935

15 25.4 -16 33 5.9 gms -21.48

+0010 60 -037 ⁶²N30
+0011 ±1.0 -033 ±1.260 → N30



-0014 ± 4.6 -015 ± 3.8
-0012 -007

137709 15 25.9 -46 34 5.0 MO -18.16

20799 27.53

5.25 +1.75 5.0

8941

54.827 1409.8 -46 33 39.56 1404.2

0.56
1.883

+1.69
38.87

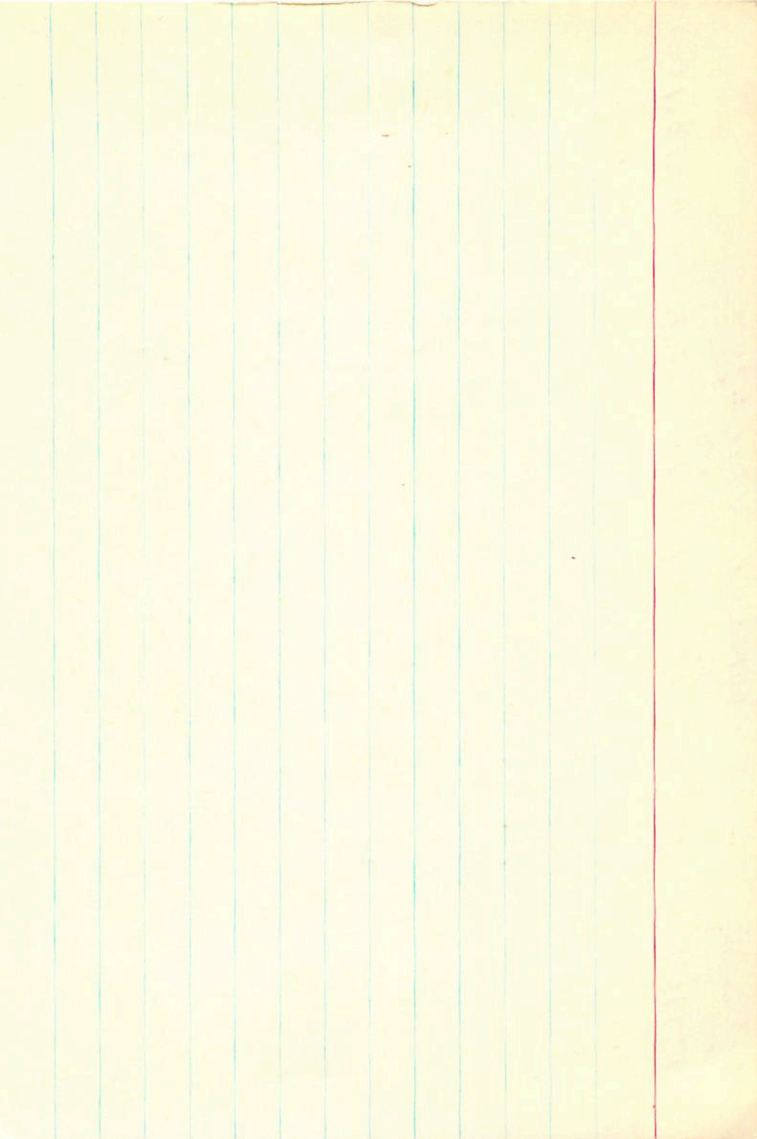
38.2

54.862
-17
37.15
71
836
4

3895 1439.34
-22
39.17
95.96
48.0

38.91 1956.52
-28
39.19
39.18
-1.31
43.8

54.841 -047
115
826



-00

-00007 700 Cal
15 26.7

-0050 ± 2.6
-0043
0052

+004 ± 2.5 +001
-004 +004
8 F.P. -36.1

+004 ± 2.5 +001
-004 +004

33 lib

99693 7037.187
1087
1037
4089, 4208 etc.

66810114 7.2
-0052
0046 +008 1.15

-0050 ± 2.6
-0043
0052
-022 +004 GC
-066 +014 Z
-068 +000

137949

+ 6854 11.1
47634 2.8
104
44743 100.9

6.74 +0.37 +0.15
-005
-0049
11.27

1898.4
47634 11.1
+ 2.8
636 1139 72.92
1933.74 36.5

20814

246
959

-17 16 11.27
-20

1898.4
47634 11.1
+ 2.8
636 1139 72.92
1933.74 36.5

8945

0723
0174
-8.0

-0044 +004
-044
534
-074400 89.84

1898.4
47634 11.1
+ 2.8
636 1139 72.92
1933.74 36.5

495/895
-0000121

19.914
24.888
44.802
448

35.6
13.10
12.94
12.22
11.72

1898.4
47634 11.1
+ 2.8
636 1139 72.92
1933.74 36.5

7097-9900

41.838
828

-00486 +0142
+ 15 +34
+10 +40

1933.74
44643 702
+0 646
10.87
-31

7048-141

11.64
1.17

11.70
11.82
11.57

1933.74
44643 702
+0 646
10.87
-31

7097-9900

41.838
828

-00486 +0142
+ 15 +34
+10 +40

1933.74
44643 702
+0 646
10.87
-31

7048-141

11.64
1.17

11.70
11.82
11.57

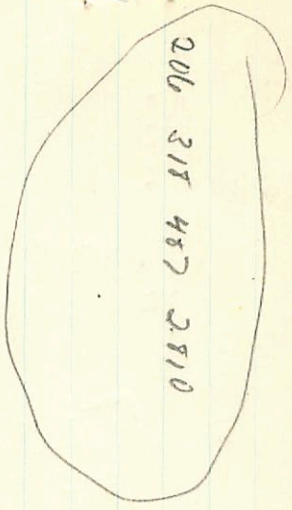
1933.74
44643 702
+0 646
10.87
-31

645 190 315 560 2828

-754-420 -297 555 -068 +010 -31.1 -002 +9 047

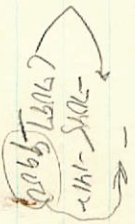
-053 002 042 001 -246 208 -28.7 +15 +23 01

-7 +14 +14



206 318 487 2810

Shiny May 2nd



-00503 +003

+006

0690

-0185

-75

-072-1

-071 +009

3