

-055-063 A6143

W202087

-042 -045

$\frac{-1}{-049}$

+3

$\frac{-1}{-046}$

W20233 12 0.4 +27 17

9.24 + 0.74 + 0.40 +25
R 8.4 + 8.49 R 7 = 326

-873 461 160 +182 5001- 9180 +0816

456887-101- 8895h A251- 9350- 278c-

186 816 982 285 910 981 5300- 2520- 2240-

+27

43-

41-

34610,

11.111

7.65

150m +14

-52

-9

823
7658
+58 +158

11

1482496

148543 + 27 33

-76

1483-142

143

R.A. : 12.000
DEC. : 27.550
PM. R.A. : -793.000
PM. DEC. : -192.000
DISTANCE : 2.500
MODULUS : 32
RAD. VEL. : -76.000

q1 (U) : -0.873
q2 (U) : 0.460
q3 (U) : 0.164
dU : 2490.200
U : 66.264

q1 (V) : 0.450
q2 (V) : 0.888
q3 (V) : -0.092
dV : % -2309.00
V : -65.990

12
q1 (W) : 0.188
q2 (W) : 0.007
q3 (W) : 0.982
dW : -633.923
W : -94.684

12 01.0 -71 55 2.9470.80

104724

052

8.04 10.78 +0.33 (2) +24.4

-0102 -036 York 1884

7.77 +0.26 (4)

(3)

-0072 -022 Cape

-6 - 1

-0098 -030

-6 + 5

-0072 -025 York

-0102 -036 York

-0087 -030 5

-040 5

124

-040 -036

h

2000
2001
2002
2003
2004
2005

2006
2007
2008
2009
2010
2011
2012
2013
2014
2015
2016
2017
2018
2019
2020
2021
2022
2023
2024
2025
2026
2027
2028
2029
2030

M

FAILED
CARTRIDGE OUT

12.000

-71.900

-129.000

-26.000

3.000

40

24.400

-0.873

0.087

-0.480

155.129

-5.547

0.450

-0.237

-0.861

-56.339

-23.247

0.188

0.968

-0.168

-155.038

-10.269

B

F4 ± +35.3 / 86

4680

104731 12 61.1 -42 09 d.14 +36.5 a

6016472 5.14 +0.40 +1.58 (4.5)c +37.46(3)

W7238 5.13 70.41 +1.57 +34.86(12)

5.12 +0.43 -0.04 585 Cape +37.6W(12)

Y2782 ES 20.40 W(+3.1)

-410638

569 272 149 490 2191

+323 -125 62

+325 -166 130

+324 -120

~~-2 -45 -9 .030~~

-63 -12 +37 .030

-89 -4 -1 .020

-76 -5 +1 .025

404110

200(6)

335

0 -1 -671 742 +324 -120 +36.5 081 -24 -422 ✓

0 0 -324 -081 374 -1.535 +27.1 -27 0

-11 -64 -42 :024

$\boxed{-77 -8 0}$

-15 -50 -38 031

$\boxed{-63 -14 +3}$

-17 -38 -34 04

-19 -31 -32 05

-20 -28 -32 055

-42 -21 +7

104755
6216475
W7239
+602543

12 01.2 +05 50 df3
6.5

^{50?}
+62
+7.64(6)
+1.14(3)

W(+3.2)

+24 -35 ~~4~~ .020
+29 -45 -16 .015
+35 -52 -18 .013

-156 ± 8 -085 ± 7.
-159 -084 ±
-147 ± 2 -088 ± 2.6
-155 -086

0 -1 101 995 -155 -086 +6.0 -009 +1 -407
0 0 155 009 -043 734 +6 -6 0

-10 +61 -33
+35 -57 -17

012

104817
1207509

11 ~~52.1~~ +2
12 0.6 +1 44

+12.1 ± 2.5 R(14)

7.68 + 0.22 + 0.08 A7M

+58-54 -12 .007
+51-49 -9 .008

-114 -029 Rde

-0080
0
-0080

-026 Z
+2
-024 CC

201530 1000

104817.000

12.027

1.700

-116.000

-27.000

6.000

150

12.100

-0.872

0.485

-0.059

417.265

65.422

0.454

0.759

-0.467

-346.500

-60.570

0.182

0.434

0.882

-155.773

-14.014

H0104767 12 01.6 +1 42/ A_m +12.1 R(4)

7.68 +0.22 +0.0F 007

-114 -029 Y
-117 -026 ^{6ms}₁₉₅₀

$0 \quad -1 \quad 0 \quad 1 \quad -117 \quad -0.26 \quad +12.1 \quad 0 \quad 0 \quad -1\frac{2}{3}$
 $0 \quad 0 \quad \overset{117}{\cancel{000}} \quad 0 \quad \overset{117}{\cancel{053.4}} \quad +12.1 \quad -12 \quad 0 \quad 0 \quad 0$
 $0 \quad 0 \quad 0 \quad 0 \quad 0 \quad 0 \quad 0 \quad 0 \quad 0 \quad 0$

$$-12 + 67 - 17$$

$$\boxed{+50 - 49 - 9}$$

$$-12 + 55 - 12$$

$$+41 - 40 - 5$$

244 + 4.57
244 + 4.57
244 + 4.57

210

10480

12 01.5 +3

5.83 382-141/2.55 2.575 (6) 1.27 +0.5 -0.7 Roman
5.83 22 340 171 760 (1) 9.25 +0.60 -0.05 Sandage
384 140 756 2379

611-36

689
655

444A

49.5

+074-568 A6103

+9.56

+061-589 GCT →

+0050 -598 GC

+061 -610 TT #4

+0032 -581 new 12

+060 -581 Y →

+0048 -509

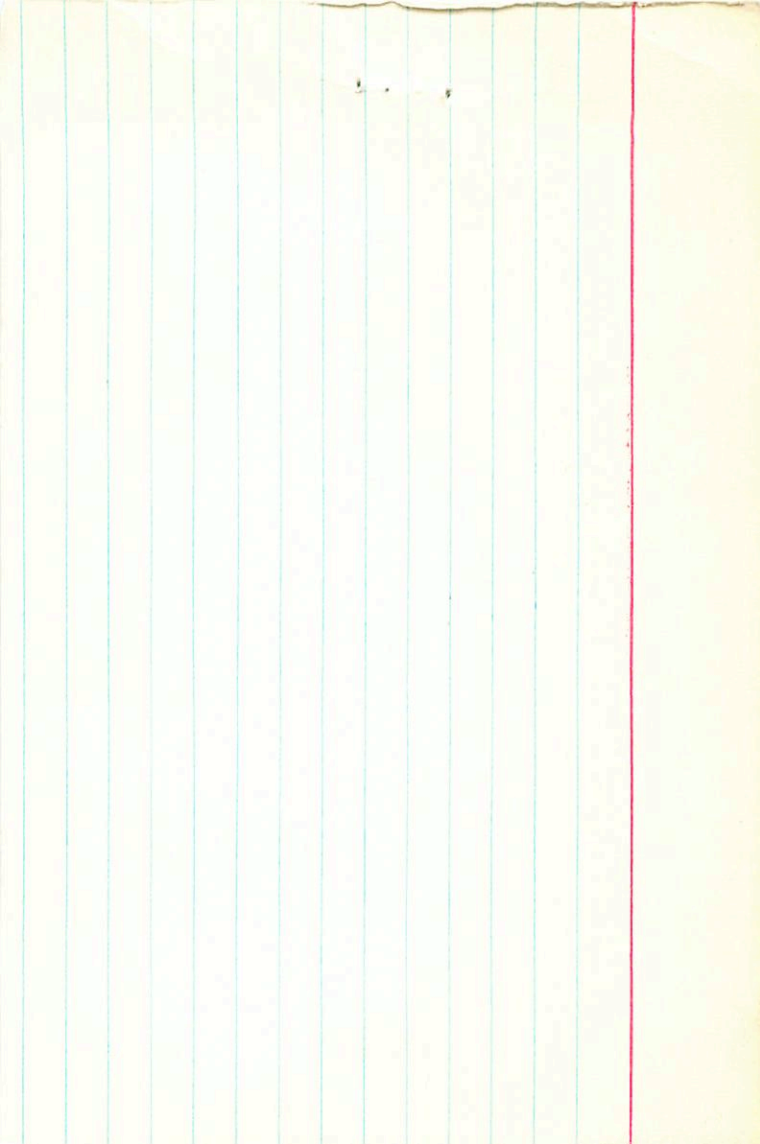
+064 -587

1011 440.3 Bricker

4066 -584

4.55

-0.79



H5 12Y
+0032
+0050 ± 5.6
-584
-601 ± 4.9

170 104800 12 01.5 + 3 3F 60 ± 1.290 + 1.1C

+42568
104800
47240
16483
7240
9.27 ± 0.55 - 0.07 + 160 ± 6 - 581 ± 6 Y
δ = 1.55 + 0.75 - 601 ± 6C

+046 ± F
+061 ± 8 - 610 ± 20 SR
33.60
37 36.28 1894.1

+048
+000
-575
-61
-153
-0.20
-66
-114
-114

37.2

467

31.549

587
587

31.58
7118

39.7

48.3 1931.233

-22
48.08

187.6
46.6
1194.16

148 (7)
-60 (10)

$$0 - 1 \quad 0 \quad 1 + 060 - 595 + 11 \quad 0 \quad 0 - 2.820$$

$$0 \quad 0 - 060 \quad 0 \quad 0 - 285 + 11 - 11 \quad 0$$

$$\begin{array}{r} -1 - 12 - 66 \\ -5 \quad 6 - 106 \\ 10 \quad 2 - 66 \end{array}$$

$$\begin{array}{r} -1 - 17 - 88 \\ -5 \quad 79 - 141 \\ 10 \quad 73 - 88 \end{array}$$

$$-11 - 14 - 141$$

$$\boxed{-79 - 105 - 54}$$

$$-11 - 19 - 188$$

$$\boxed{-106 - 137 - 75}$$

02

015

104800

12 01.5

+03 38 29 60 7112 W(3)

6016483

9.27 10.55 -0.07 602

672240

S=1.5

42784

-18

+402568

-193 -247

-162 -209 -101 .010

-108 -141 -64 .015

+075^{±6} -601^{±5} 60

+060^{±6} -581^{±6} 4

+070 -595

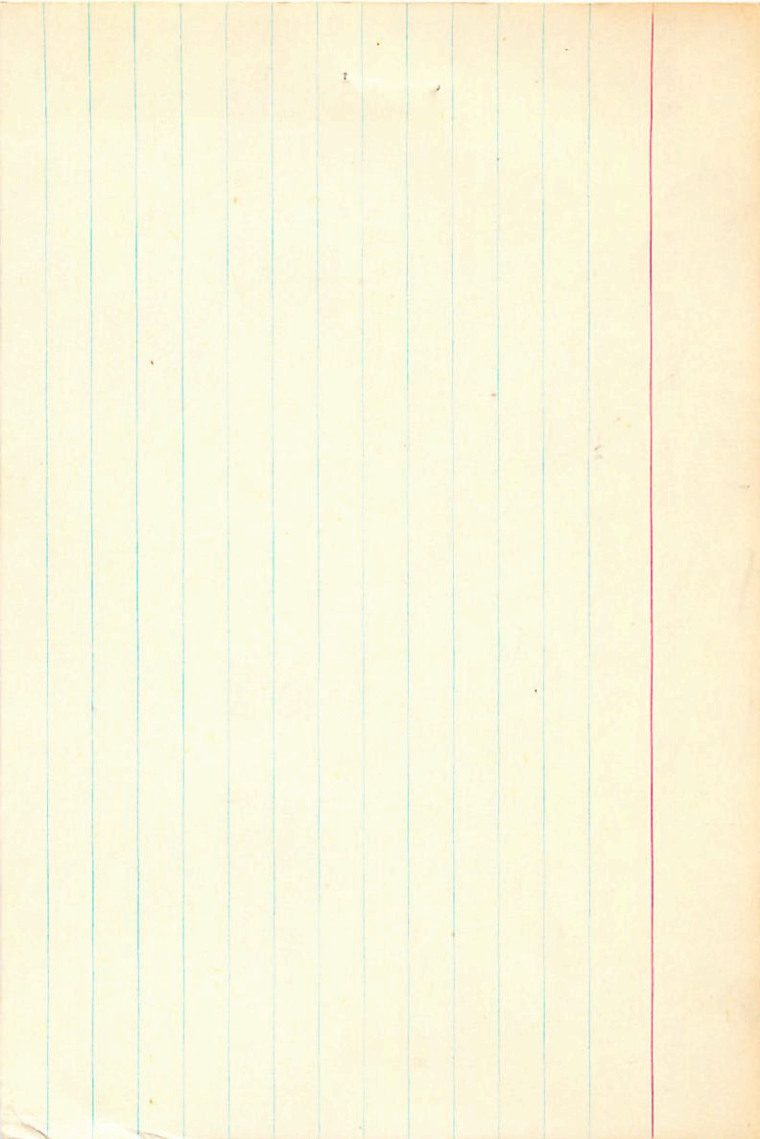
184(8)

117^{1/2}(6)

125(7)

-64(10)

S=6



H 10 4800 402568

11-36

4.2 01.5 +3 38

+8.6 another
+2.9 send

GC16483

9.27 +55 -07 Remain

+11c interest
→

id

9.25 +60 -05

+18

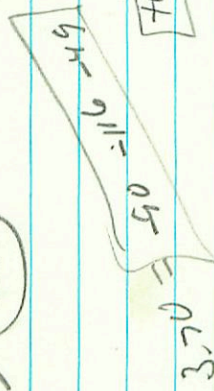
3.70

18M(8)

114K(6)

145(7)

134M



487
654

-95

-86

-53

14

10

WATERBURY

NOV 18 1887

RECEIVED

OF THE

LIBRARY

OF THE

CITY

OF WATERBURY

VERMONT

1887

NOV 18 1887

RECEIVED

OF THE

017

104800.000*

12.000*

1.500*

3.000*

38.000*

0.066*

-0.584*

4.550*

81.283

9.500

ok

-1.621

-0.042

-76

-132.196

-2.001

-0.442

14

-96

-166.845

-1.062

0.896

-40

-77.79

HRY605

X Cham 104902
16497
7247

41.0 474 481 481 243
474 1896
476 1896
476 1896
3365 20756
3365 20756
3321 1038

12 02.2 -26 14 -2.48

389 324 24 4.24 +58
389 324 24 4.24 +58
+5.00 +1.50
389 324 24 4.24 +58
389 324 24 4.24 +58

389 324 24 4.24 +58
389 324 24 4.24 +58

512 6

20134 +04466 → 32

59 198
59 198
59 198
59 198

437 608
437 608
437 608
437 608

-872 +042 -457
4455 -243 -841
+178 +954 -236

+2943 +0087
-1536 -0608
-0600 +4490

+3030 +38.2 +1.2
-2134 -26.8 +2.0
+1390 +17.2 +0.6

407

41.9

-0200 E45
+035 F3.4
+038

9.803
862
1906.9

2882 15060

10.665

-0210 +035

-1.71
3.053

9.918

+044

2850

15418

-075

-26

9.855
-990

29.16

+1.37

20



21.963

-0.240

0.135

-33.447

-0.839

-0.224

51.689

104904 12 02.1 +85 52 2126

HR4606

061646

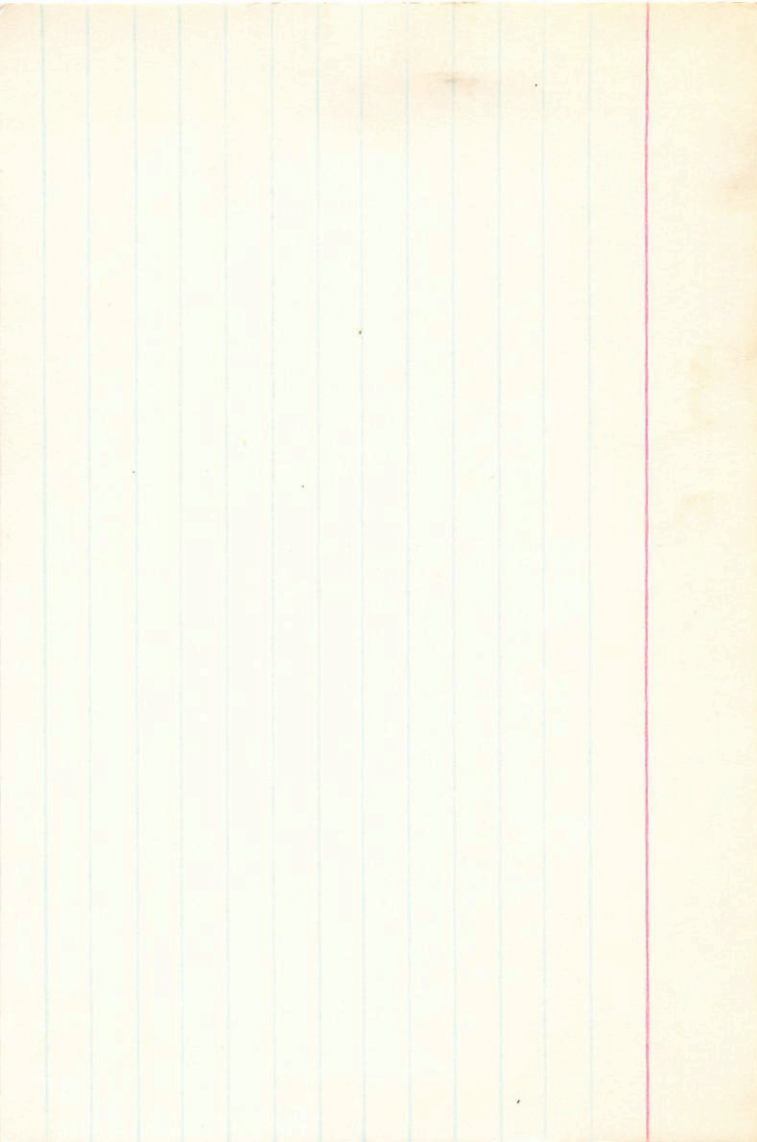
638 372 153 407 2403 abar

11 181 124 535 427
968 448

05851
223
15920
+05128

15492

+05754350
+6483



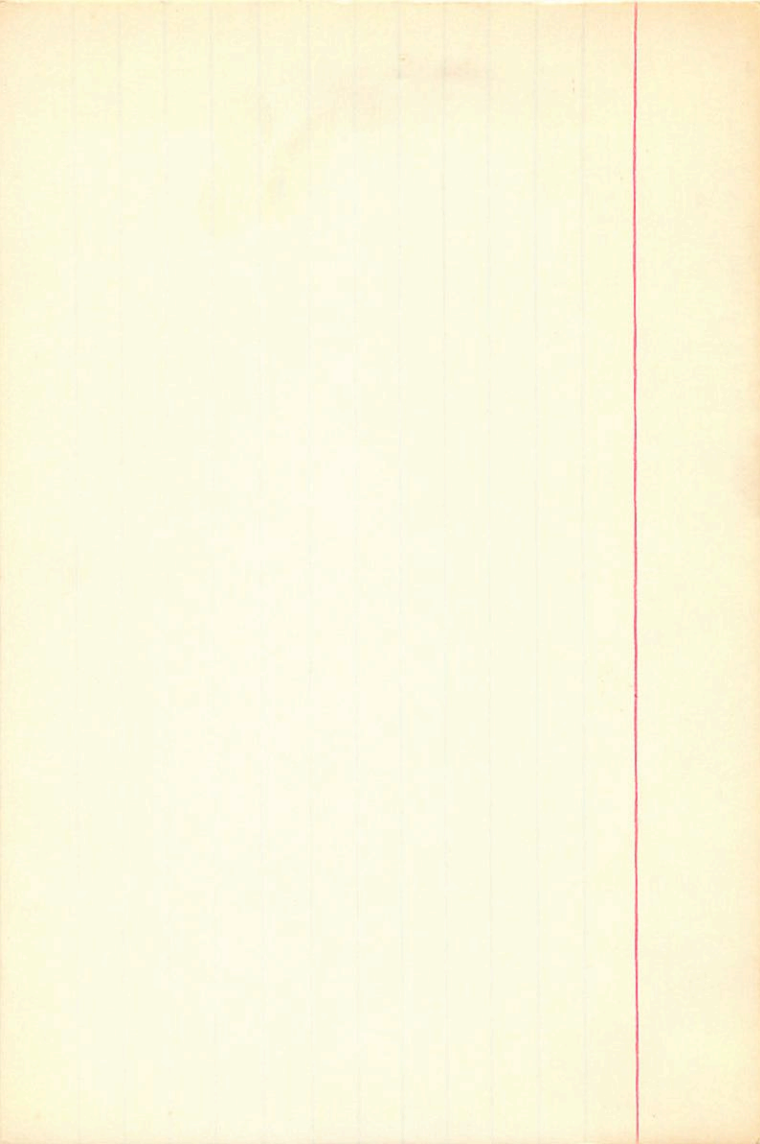
$$\begin{array}{r} 8.87 + 2.5 + 0.3 \\ + 2.1 \end{array}$$

$$+3,02327 \quad 12 \quad 02.46 \quad +31 \quad 07$$

$$104959 \quad 437$$

$$\begin{array}{r} 0 \\ +0020 -06666 \\ \hline \end{array}$$

$$\begin{array}{r} +026 -063 \end{array}$$



+3102227

104957

-0011 -067
-0026 -050
12 62.6 +31 07

07 8.90

-26.0

-30.6

Sum 19 2208

-0018 -075

59.75

33.635

33.384

-2.81

1.28

1.56

42.6

86.6

40.26

17.034

1.03

5.13

46.37

44.0

+0.1

44.1

+2.1

46.2

1910.0

33.09

0.17

1.03

1.03

1.03

42.6

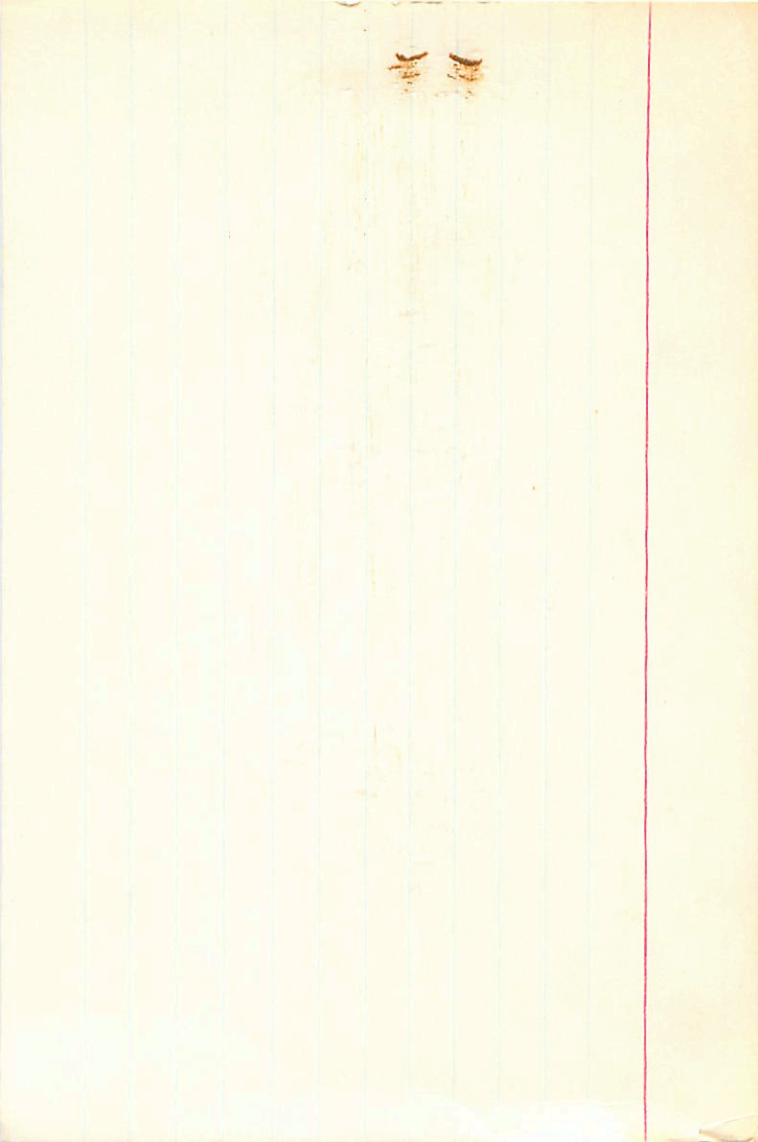
-1.8

40.8

42.6

1.50

1530.1



4607

12 02.4 -60 40

5.56

$\begin{matrix} +0.5 & \textcircled{2} \\ -0.4 & \textcircled{3} \\ -0.1 & \text{Jan} \end{matrix}$

$-0.25 - 0.45 = 66$

$\frac{15}{19}$

$\frac{1000}{-0.26}$

!

16

4607.000*

12.000*

2.400*

-60.000*

-40.000*

-0.030*

-0.036*

7.000*

251.189

-0.100

0.095

-0.459

23.984

-0.054

-0.888

-13.581

-0.193

0.025

-48.561

1b

104988

12 02.7 -01 17

AKO +14.14 u(13)

GC16513

8.14 + 0.74 + 0.26 $\overline{68\bar{U}}$ R

w7249

$\delta = 1.0$

Y2790

-0° 2532-

+80 -39 +4 .028

+75 -39 +5 .030

$$\begin{array}{r}
 -518.5 \\
 -522.5 \\
 \hline
 -520
 \end{array}
 + 0.52 \times 60$$

$$\begin{array}{r}
 +0.63 \\
 \hline
 +0.56
 \end{array}$$

329

105028

12 03.0 +28 34

-14.9 (7)

292283

+170-111

8.6

194

111

17

Handwritten notes on a piece of paper with a hole, placed on a light blue background. The text is written in blue ink and includes the number '20' at the bottom left and the words 'SOLUBLE' and 'SOLUBLE' written vertically on the right side.

20

SOLUBLE

SOLUBLE



+0014 ± 4.2 -005 ± 3.0 G8 III
 +0032
 +52 13 70 965 -18.0 6

105031 12 03.0
 16521 8" 90 970 -16.7 6
 F8 III

7254 2145 1895.1 +52 12 34.0-4 1783.4 -17.4

199414
 -077
 068

BM = 0.87
 45.82
 16.485
 2.2118
 1.85
 192

+33
 34.87

119.8
 89

55.4 1927.8
 -20.88

(41.8)

188
 +120
 213
 +145
 2.164
 -1
 183
 2.276
 1.1
 2.04

34.38 1944.8
 -19
 34.19

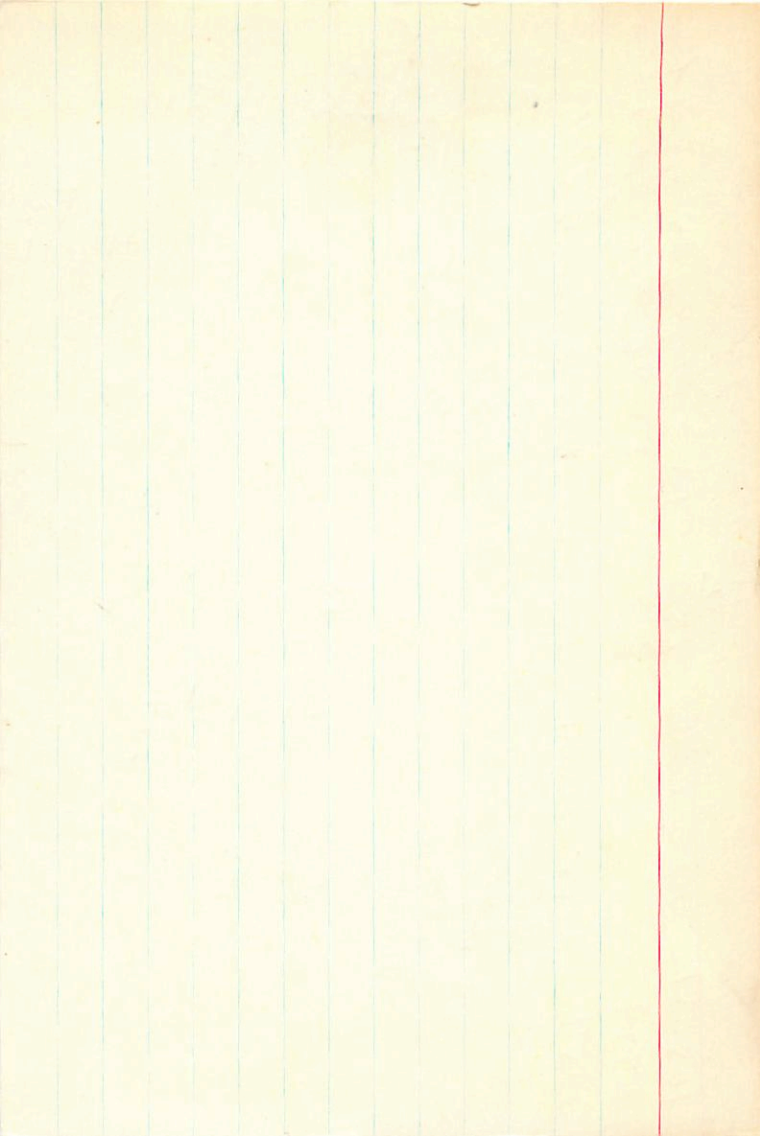
1647.2

~~34.27~~
 34.27

34.27
 -24
 34.03

39.9
 36.5
 7261
 363
 52.9

34.27
 -5
 34.22



105029

12 03.0 +69 C2 y M4 +1228 W(3)

G616522

+690641

W7256

8.1

-0107 = 5

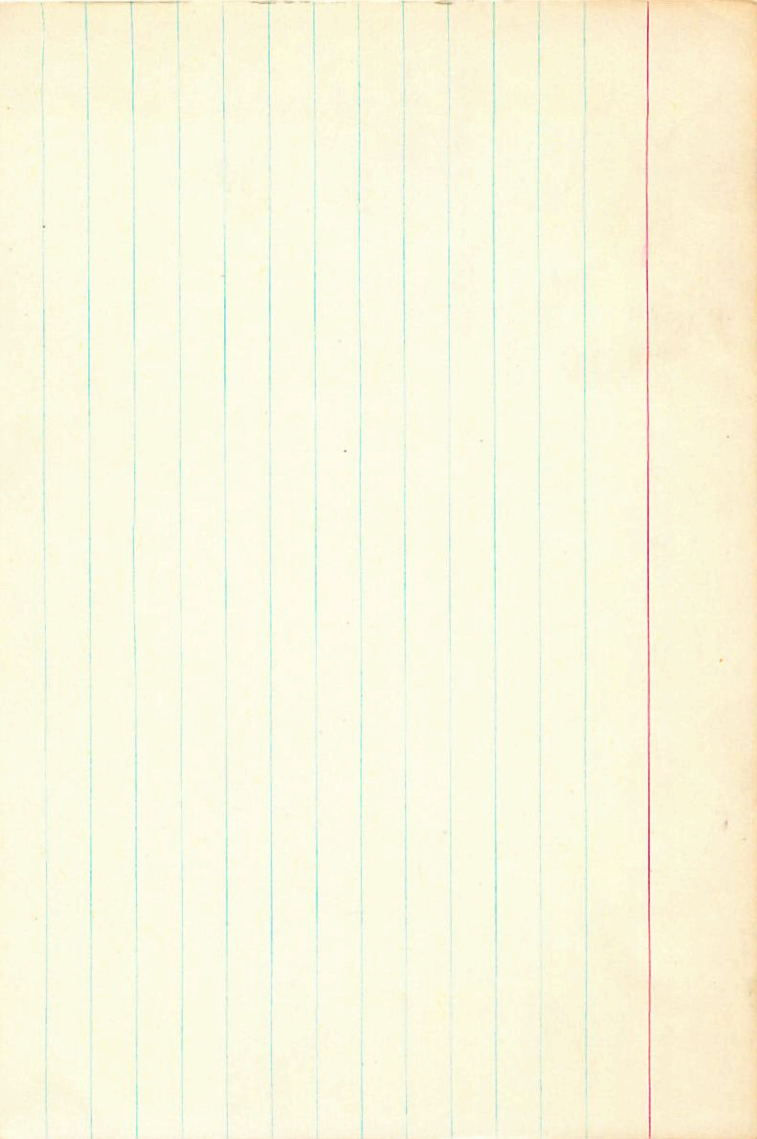
-0565 -0674 PL

-053 -004 GAZ

-055 -015

+110 -78 +10 .002

+75 -50 +10 !003



AD58419

12 03.5

+65 59

-12.16

.0099

0 -1 934 359 -010-026 -12.1 -024 -11 -043
0 0 010 024 -114 047 -4 +4 0 0099

-7 +5 -15
-4 -16 -27

31
104
208

10515)

12 038 -65 26

~45 (2)

10544

-0064±14 -015
-010±5.8

46.568 483-0089

57.19 946

$\frac{381}{999}$

$\frac{55}{5064}$

(30.63)

25.7911

30.12

17.608

-20.10

$\frac{16399}{4}$

5122

213

±0V

$\frac{213}{16}$

35.15

+3162328

105199

12 04.2

+3032

984

-232-9
Wan

17.87

2554

14.406

14.425

14.2630
125

+0007
-0022

-026
-011

ADD

44.0

15114

-0008 -016

21.8

0 +3

24.2

-0008 -015

2431

14
24.13

1420

009

209

142

241

14

23.91

21

1930.1



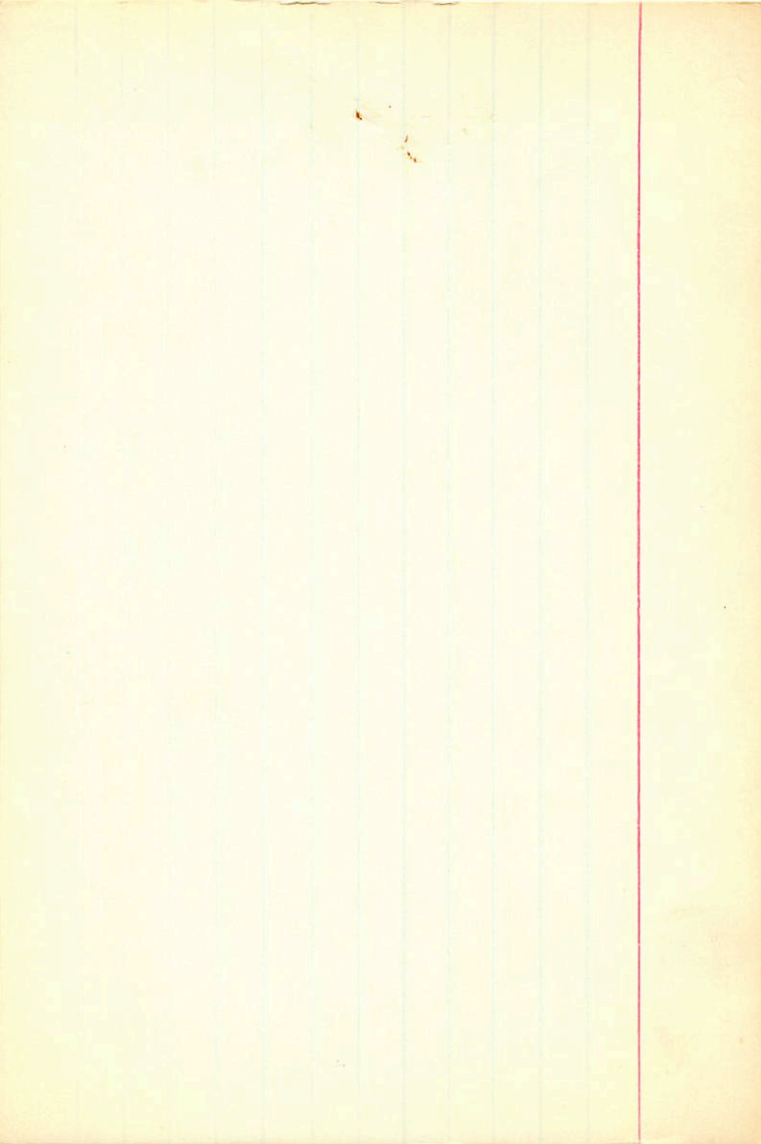
+1.6
4.83 + 16 + 09

+3102328
12 04.2 + 30 32 |

105194

+0007 -026 6m⁰
A611-2 ±0000 -018 FIC3
+0004

+005 -022



35.1

58

Omitted from
Published list

116511 12 04.3 -64 2.0 1=2 +90a

H 7264

+034 -046 GC
+042 -035 N
+037 -040

+0.33 F=0

4.24

184 -34.7 / 434
184

404 (12)

038.11.05 / 512
512
509 02 035
512

2656

39360 1167 0443
91 13349 -7468 0704
2508

18804
+0058 0321
+0050 0321

18804
+034-028

191
+9.0

350 93563581 1123-7493 0468 +0107 0132 440

0 -1 -901 434 +035 -040 +5.0 036 -8.1 -081
0 0 -035 -036 171 -150 23.9 -3.9 0

+6.2 -10.6 -12.5 0 17

$\boxed{-14.8 -1.8 -9.7}$

\nearrow

+2.5 -12.0 -12.4 0 15

$\boxed{-16.3 -1.1 -10.8}$

023

+4.7 -9.0 -12.1

02

$\boxed{+13.1 -2.8 -8.2}$

7600
105211

SAB 7
12 04.3 -64 20 4.3 F2 490a

16551

4.14 + 0.32 = +1.59, 1.24"

7264

+0065¹⁶ -35 N30

4116

+0054 ± 2.6 -40 52.766 → N30

16.59

+0052⁻⁰⁴⁴ -046

+0055 -043

15.504 8.1

+0051

5.71 6.9

+00526 -0371

$\frac{21.86}{2.8}$

+1.44
 $\frac{1.44}{7.2}$

21.21

70.40

+0341

3492

$\frac{1.44}{7.2}$

15.580

$\frac{+25}{605}$

$\frac{-21.5}{6.5} = 2$

+035-033

4.74

0479

39.60

0011

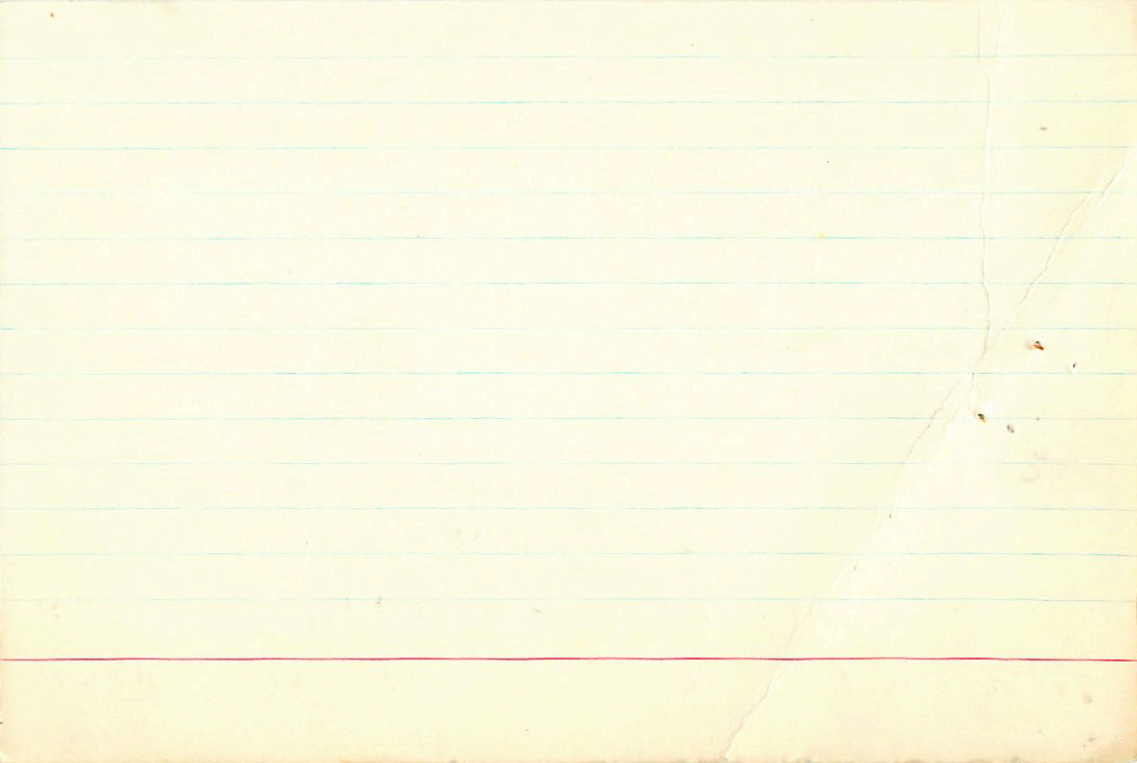
$\frac{-39}{5.13}$

+1.45

~~7600~~

0135

4.86





1. 503 - 6. 503

0. 982

0. 981

0. 575

0. 896

0. 888

12. 989

0. 161

0. 881

0. 888

158. 489

6. 888*

0. 888*

KA82496

11 543 + 27 33

-76

203-142

243

142

2.5

76

12