

T CrB

T CrB

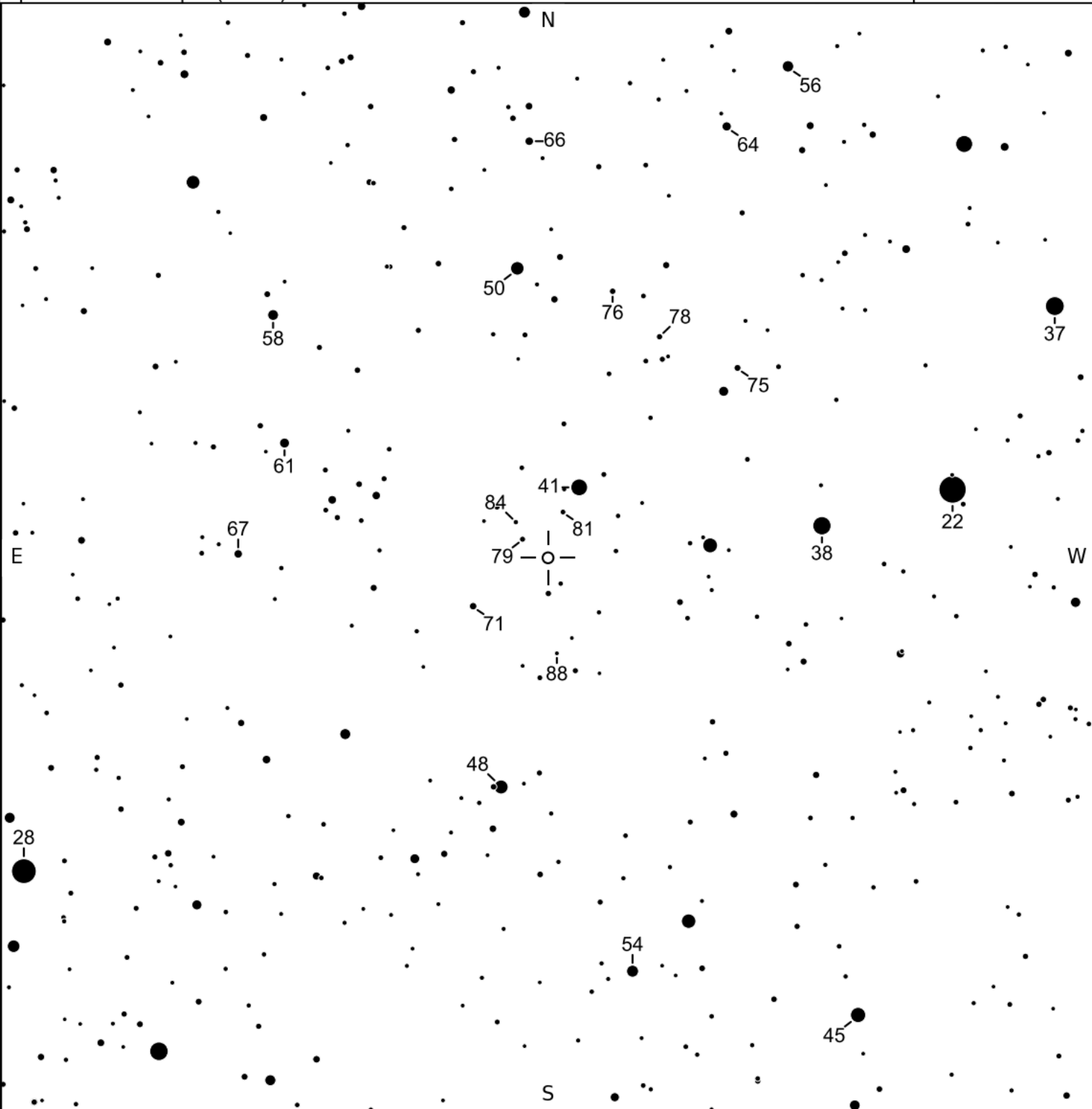
AAVSO

Max mag: 2.0 V
Min mag: 10.8 V
Period: 227.55
Type: NR+ELL
Spec: M3III+pec(NOVA)

(J2000) 15:59:30.16 +25:55:12.6
Stars in the chart are drawn at J2015.5

Binocular
Chart

X36941C



FOV = 15.0°, Magnitude limit = 9.00

Please use the photometry table for CCD observations.

<https://www.aavso.org/vsp>

Copyright © 2024 AAVSO