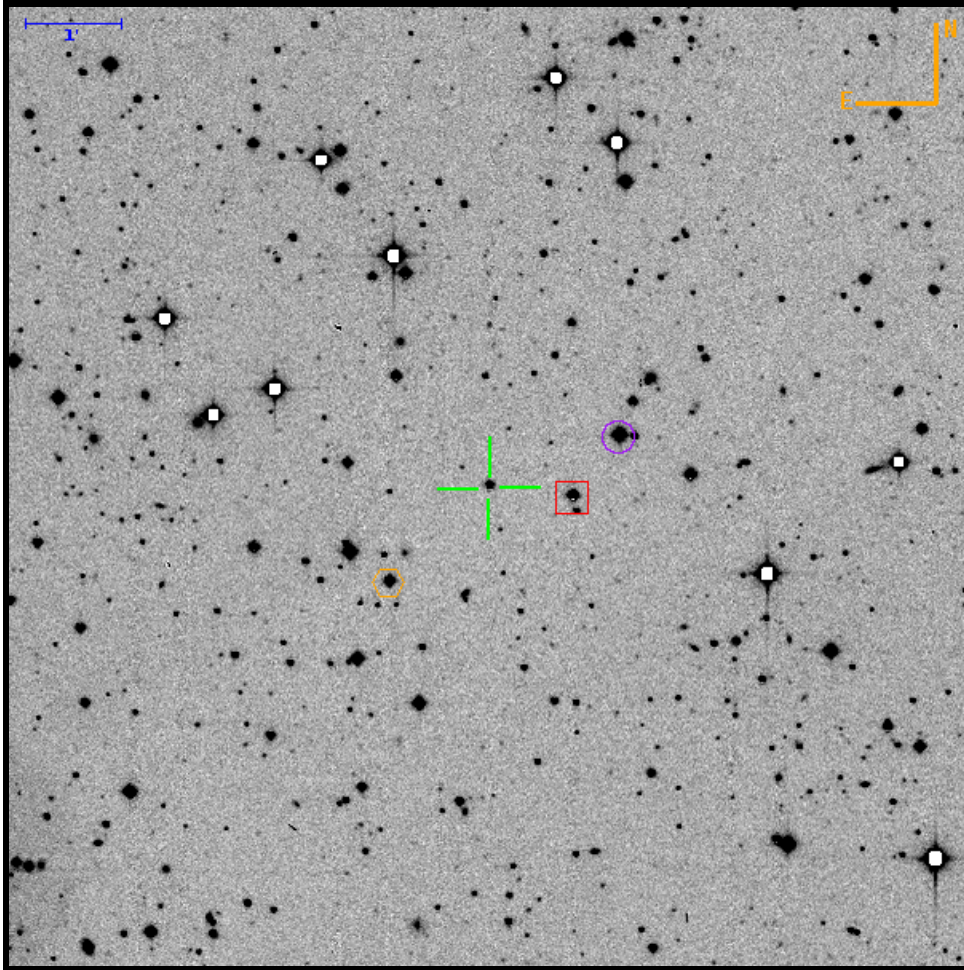


Finding Chart for PTFS1523ak

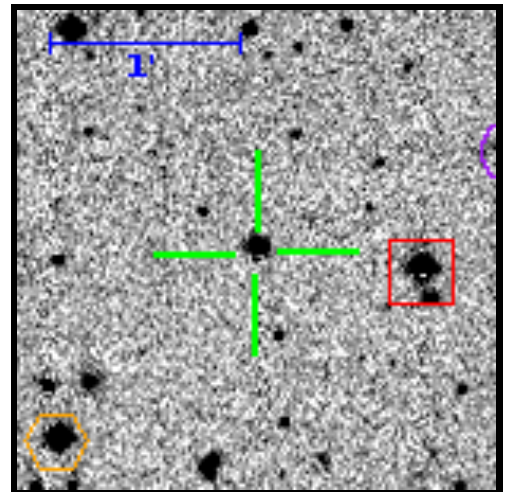
RA=23:42:26.22 DEC=+32:48:19.8



Target (green cross)		
RA	23:42:26.22 355.60924200	(J2000)
DEC	+32:48:19.8 32.80550500	
Med Mag	17.17 ± 0.70	R-band
Ref Mag	17.07 ± 0.04	R-band
Offset Star S1 (red box)		
RA	23:42:22.03 355.59178946	(J2000)
DEC	+32:48:14.2 32.80393639	
Med Mag	15.74 ± 0.02	R-band
Ref Mag	15.74 ± 0.01	R-band
Distance	53.1"	
Offset Star S2 (orange hex)		
RA	23:42:31.17 355.62988930	(J2000)
DEC	+32:47:18.4 32.78845724	
Med Mag	15.90 ± 0.02	R-band
Ref Mag	15.91 ± 0.01	R-band
Distance	87.6"	
Offset Star S3 (purple circle)		
RA	23:42:19.74 355.58224829	(J2000)
DEC	+32:48:52.8 32.81466934	
Med Mag	14.66 ± 0.02	R-band
Ref Mag	14.67 ± 0.01	R-band
Distance	88.1"	

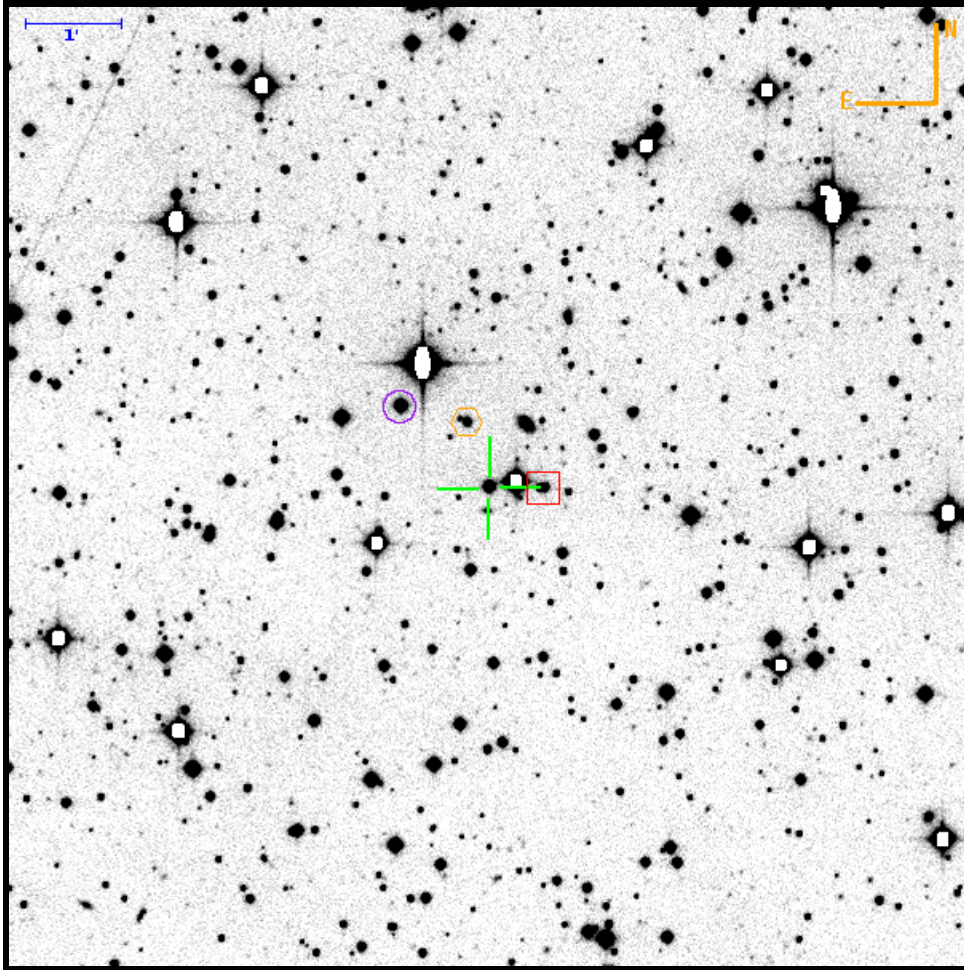
Theoretical 5 σ limiting magnitude: 22.95. Filter: R. PTF field: 02 / 004188 / 05.

		To			
		Target	box	hex	circle
From	Target	0	52.81" W 5.65" S	62.48" E 61.37" S	81.68" W 32.99" N
	box	52.81" E 5.65" N	0	115.29" E 55.72" S	28.87" W 38.64" N
	hex	62.49" W 61.37" N	115.31" W 55.72" N	0	144.18" W 94.36" N
	circle	81.67" E 32.99" S	28.87" E 38.64" S	144.14" E 94.36" S	0



Finding Chart for PTFS1500w

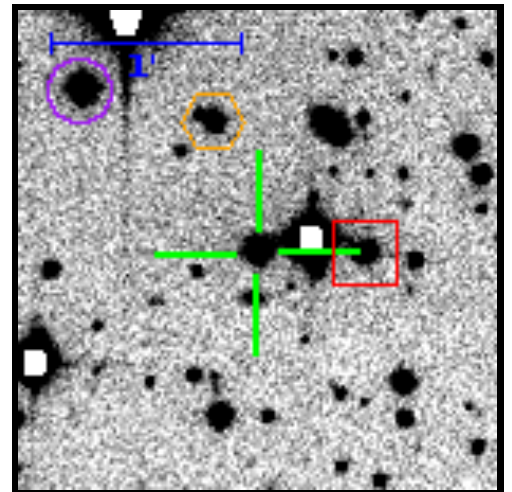
RA=00:35:35.71 DEC=+46:23:52.4



Target (green cross)		
RA	00:35:35.71 8.89877800	(J2000)
DEC	+46:23:52.4 46.39789100	
Med Mag	16.25 ± 0.51	R-band
Ref Mag	15.66 ± 0.08	R-band
Offset Star S1 (red box)		
RA	00:35:32.37 8.88487958	(J2000)
DEC	+46:23:52.4 46.39788260	
Med Mag	16.67 ± 0.04	R-band
Ref Mag	16.59 ± 0.02	R-band
Distance	34.5"	
Offset Star S2 (orange hex)		
RA	00:35:37.13 8.90471112	(J2000)
DEC	+46:24:33.3 46.40925315	
Med Mag	17.07 ± 0.01	R-band
Ref Mag	17.05 ± 0.03	R-band
Distance	43.5"	
Offset Star S3 (purple circle)		
RA	00:35:41.19 8.92161431	(J2000)
DEC	+46:24:42.7 46.41186325	
Med Mag	15.06 ± 0.01	R-band
Ref Mag	15.05 ± 0.03	R-band
Distance	75.8"	

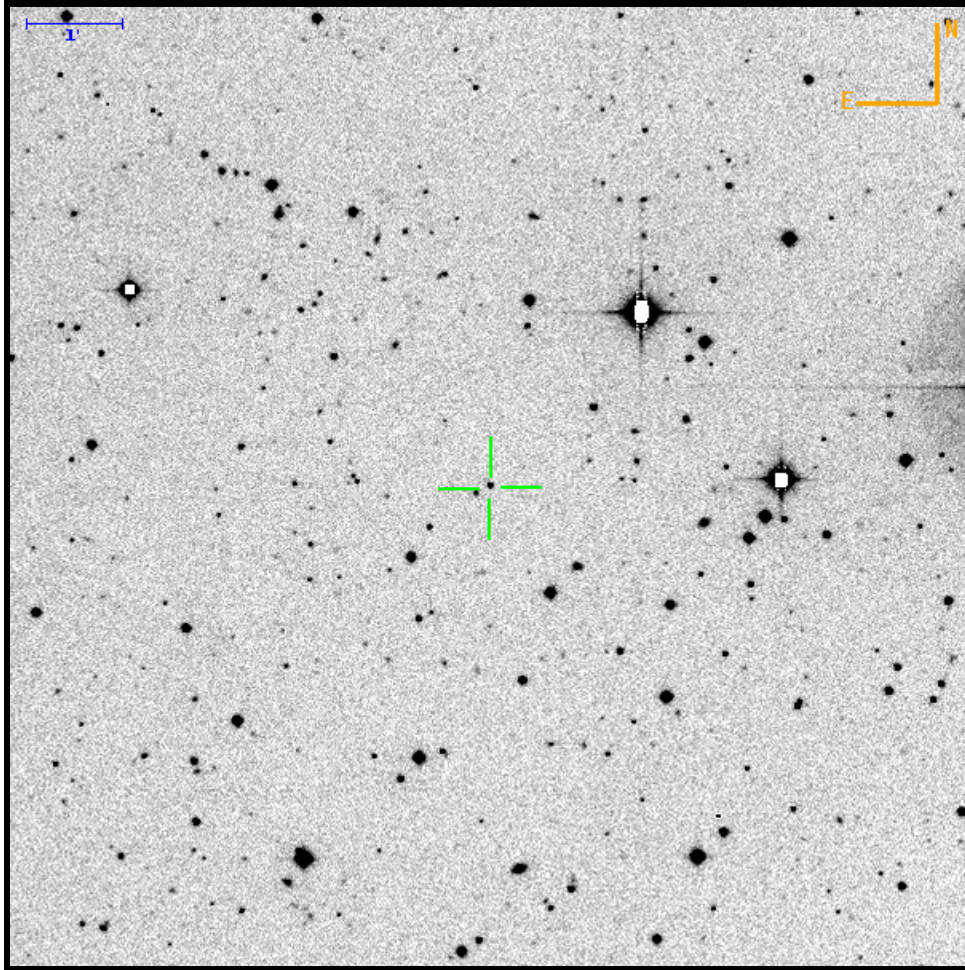
Theoretical 5 σ limiting magnitude: 22.50. Filter: R. PTF field: 02 / 004599 / 04.

		To			
		Target	box	hex	circle
From	Target	0	34.51" W 0.03" S	14.73" E 40.90" N	56.70" E 50.30" N
	box	34.51" E 0.03" N	0	49.24" E 40.93" N	91.20" E 50.33" N
	hex	14.73" W 40.90" S	49.23" W 40.93" S	0	41.96" E 9.40" N
	circle	56.68" W 50.30" S	91.18" W 50.33" S	41.96" W 9.40" S	0



Finding Chart for PTFS1500bs

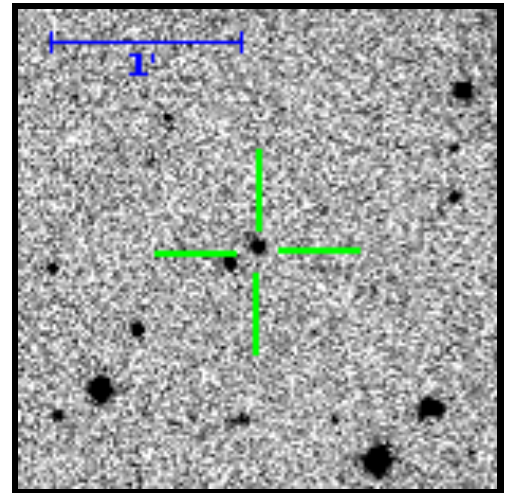
RA=00:38:27.04 DEC=+25:09:25.2

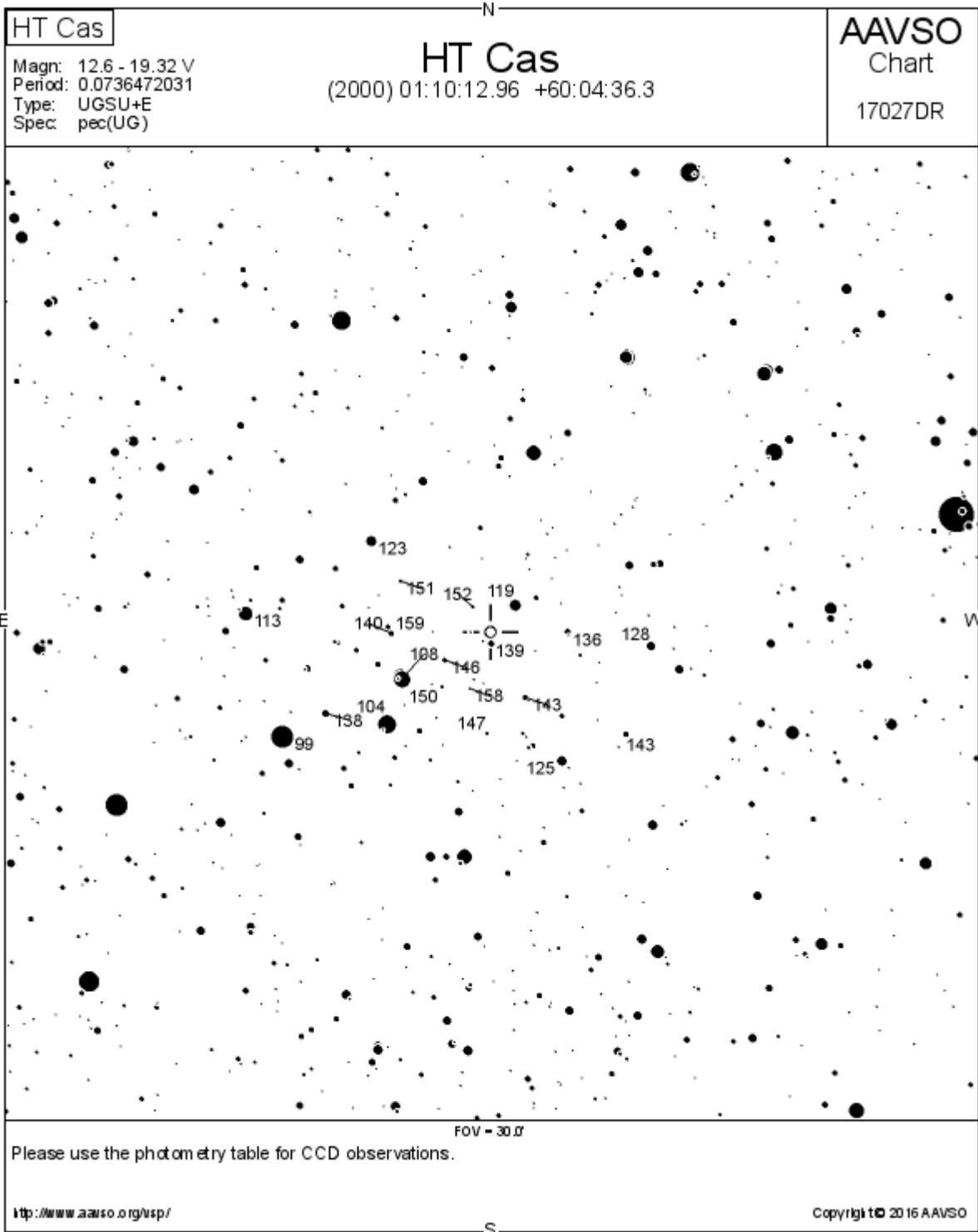


Target (green cross)		
RA	00:38:27.04 9.61264600	(J2000)
DEC	+25:09:25.2 25.15699800	
Ref Mag	18.82 ± 0.06	R-band

Theoretical 5 σ limiting magnitude: 22.22. Filter: R. PTF field: 02 / 003824 / 09.

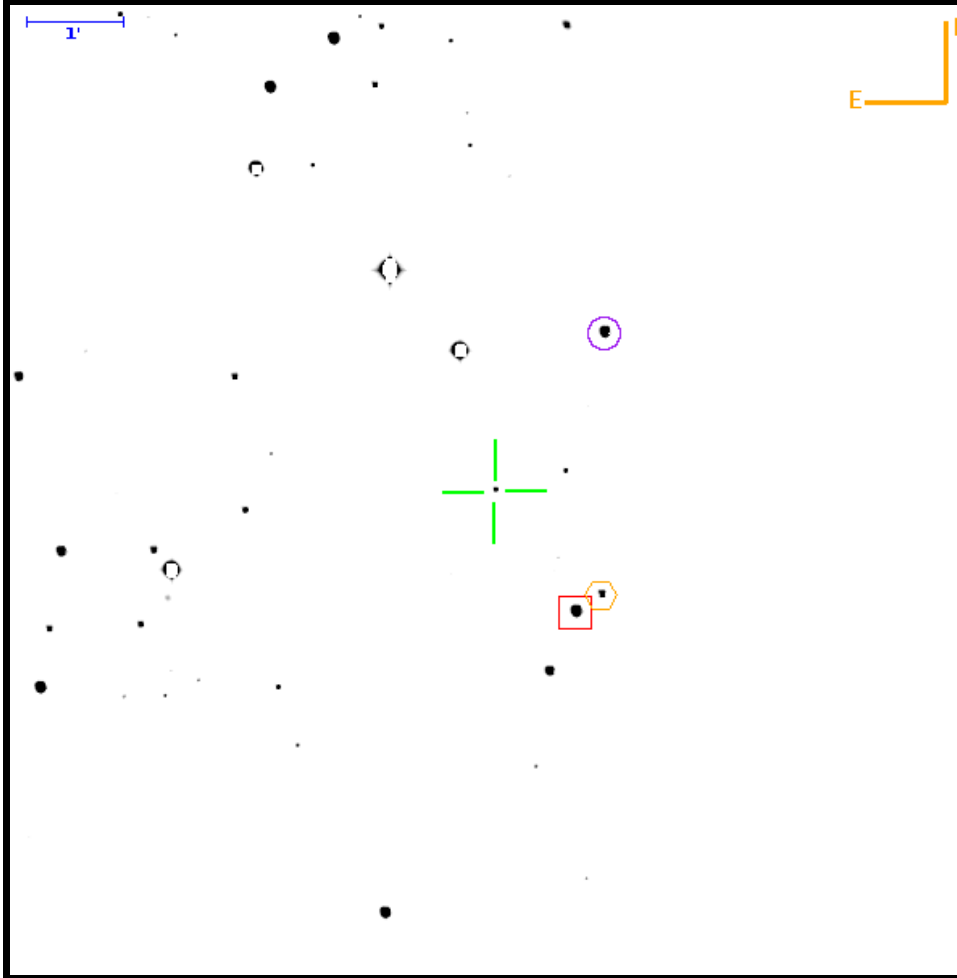
		To			
		Target	box	hex	circle
From	Target	0			
	box		0		
	hex			0	
	circle				0





Finding Chart for PTFS1501br

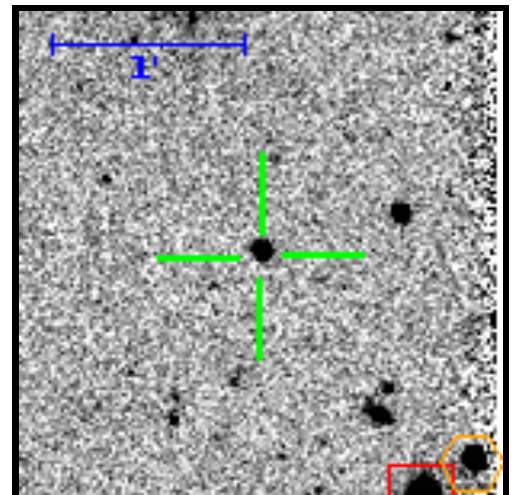
RA=01:16:13.76 DEC=+09:22:16.0



Target (green cross)		
RA	01:16:13.76 19.05735400	(J2000)
DEC	+09:22:16.0 9.37110400	
Med Mag	19.00 ± 0.55	g ¹ -band
Ref Mag	18.86 ± 0.02	g ¹ -band
Offset Star S1 (red box)		
RA	01:16:10.34 19.04306553	(J2000)
DEC	+09:20:59.4 9.34983880	
Med Mag	15.33 ± 0.04	g ¹ -band
Ref Mag	15.34 ± 0.01	g ¹ -band
Distance	91.9"	
Offset Star S2 (orange hex)		
RA	01:16:09.25 19.03856017	(J2000)
DEC	+09:21:10.4 9.35290176	
Med Mag	17.46 ± 0.02	g ¹ -band
Ref Mag	17.46 ± 0.01	g ¹ -band
Distance	93.5"	
Offset Star S3 (purple circle)		
RA	01:16:09.12 19.03798392	(J2000)
DEC	+09:23:54.2 9.39837922	
Med Mag	15.53 ± 0.00	g ¹ -band
Ref Mag	15.56 ± 0.01	g ¹ -band
Distance	119.9"	

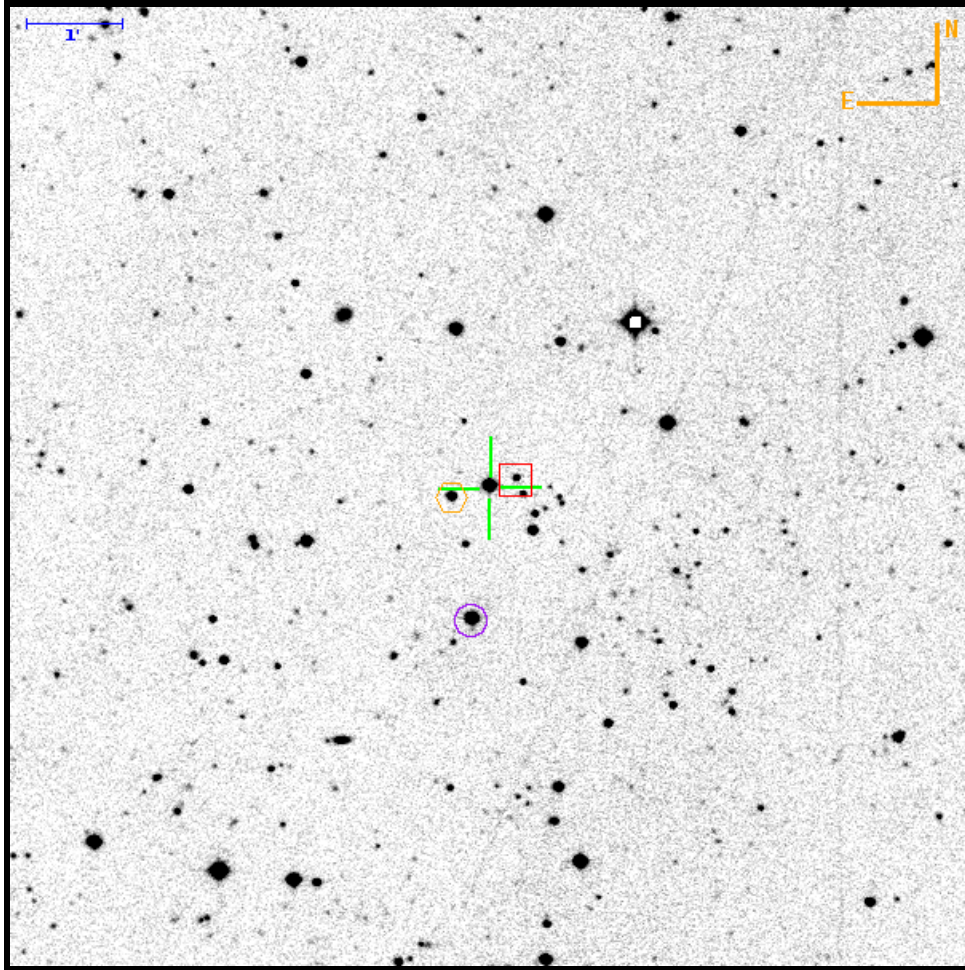
Theoretical 5 σ limiting magnitude: 23.67. Filter: g¹. PTF field: 01 / 003122 / 09.

		To			
		Target	box	hex	circle
From	Target	0	50.75" W 76.55" S	66.75" W 65.53" S	68.80" W 98.19" N
	box	50.76" E 76.55" N	0	16.00" W 11.03" N	18.05" W 174.75" N
	hex	66.76" E 65.53" N	16.00" E 11.03" S	0	2.05" W 163.72" N
	circle	68.80" E 98.19" S	18.05" E 174.75" S	2.05" E 163.72" S	0



Finding Chart for PTFS1201n

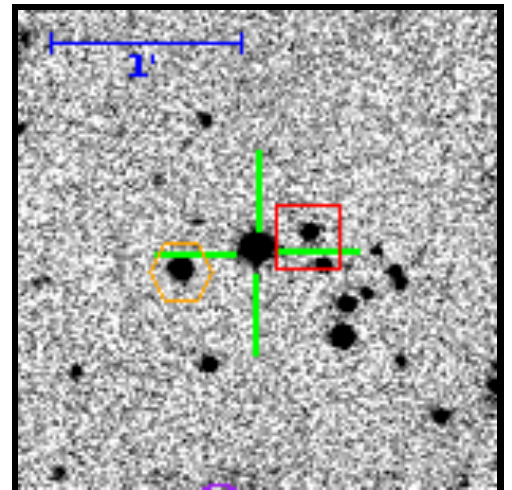
RA=01:36:55.46 DEC=+07:16:29.2



Target (green cross)		
RA	01:36:55.46 24.23108900	(J2000)
DEC	+07:16:29.2 7.27478800	
Med Mag	15.34 ± 0.48	R-band
Ref Mag	15.40 ± 0.05	R-band
Offset Star S1 (red box)		
RA	01:36:54.34 24.22639759	(J2000)
DEC	+07:16:34.0 7.27611654	
Med Mag	18.89 ± 0.10	R-band
Ref Mag	18.90 ± 0.02	R-band
Distance	17.4"	
Offset Star S2 (orange hex)		
RA	01:36:57.08 24.23784312	(J2000)
DEC	+07:16:22.7 7.27297110	
Med Mag	17.39 ± 0.05	R-band
Ref Mag	17.40 ± 0.01	R-band
Distance	25.0"	
Offset Star S3 (purple circle)		
RA	01:36:56.24 24.23434298	(J2000)
DEC	+07:15:05.3 7.25147541	
Med Mag	15.36 ± 0.01	R-band
Ref Mag	15.39 ± 0.01	R-band
Distance	84.7"	

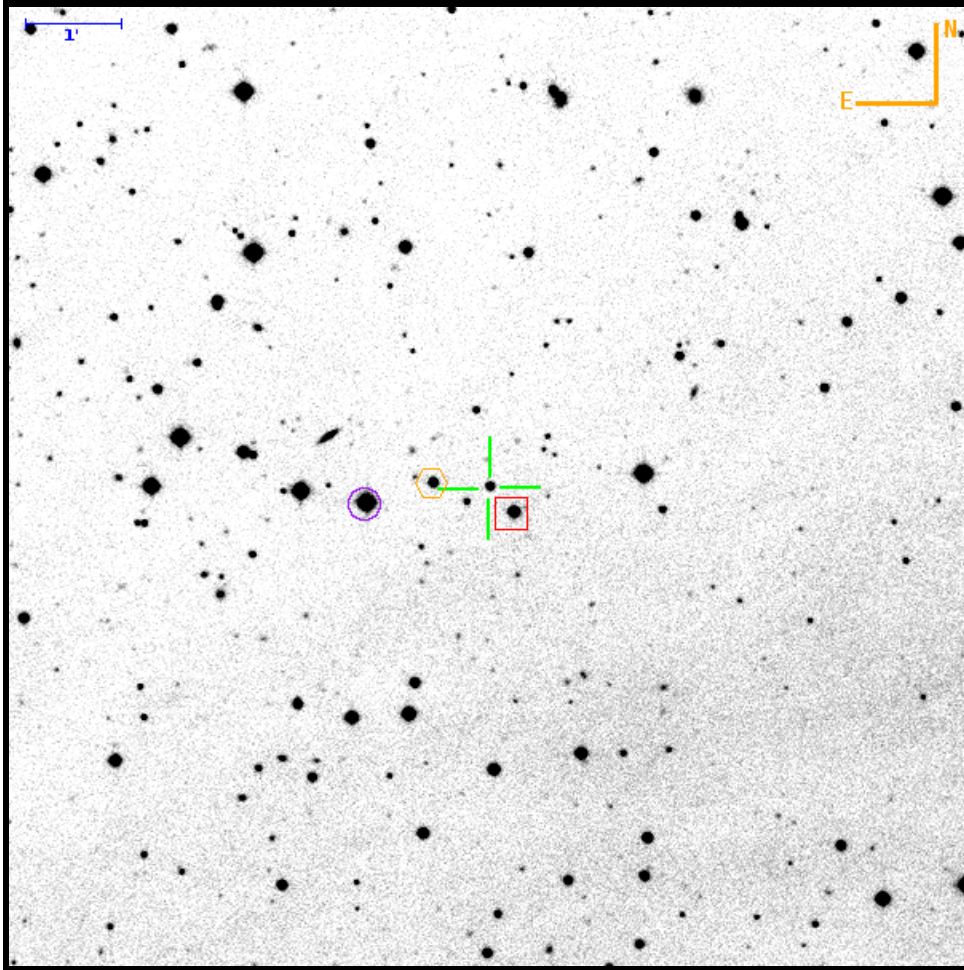
Theoretical 5 σ limiting magnitude: 22.49. Filter: R. PTF field: 02 / 003019 / 06.

		To			
		Target	box	hex	circle
From	Target	0	16.75" W 4.78" N	24.12" E 6.54" S	11.62" E 83.93" S
	box	16.75" E 4.78" S	0	40.87" E 11.32" S	28.37" E 88.71" S
	hex	24.12" W 6.54" N	40.87" W 11.32" N	0	12.50" W 77.38" S
	circle	11.62" W 83.93" N	28.37" W 88.71" N	12.50" E 77.38" N	0



Finding Chart for PTFS1402x

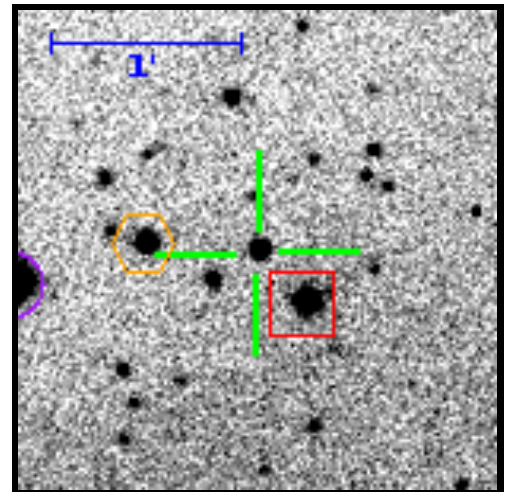
RA=02:54:43.76 DEC=+22:44:02.2



Target (green cross)		
RA	02:54:43.76 43.68232300	(J2000)
DEC	+22:44:02.2 22.73395500	
Med Mag	17.82 ± 0.62	R-band
Ref Mag	17.89 ± 0.03	R-band
Offset Star S1 (red box)		
RA	02:54:42.66 43.67775861	(J2000)
DEC	+22:43:46.1 22.72948409	
Med Mag	16.44 ± 0.03	R-band
Ref Mag	16.44 ± 0.01	R-band
Distance	22.1"	
Offset Star S2 (orange hex)		
RA	02:54:46.36 43.69316439	(J2000)
DEC	+22:44:04.6 22.73459836	
Med Mag	17.29 ± 0.11	R-band
Ref Mag	17.30 ± 0.01	R-band
Distance	36.1"	
Offset Star S3 (purple circle)		
RA	02:54:49.40 43.70585105	(J2000)
DEC	+22:43:51.8 22.73104720	
Med Mag	14.30 ± 0.04	R-band
Ref Mag	14.31 ± 0.01	R-band
Distance	78.8"	

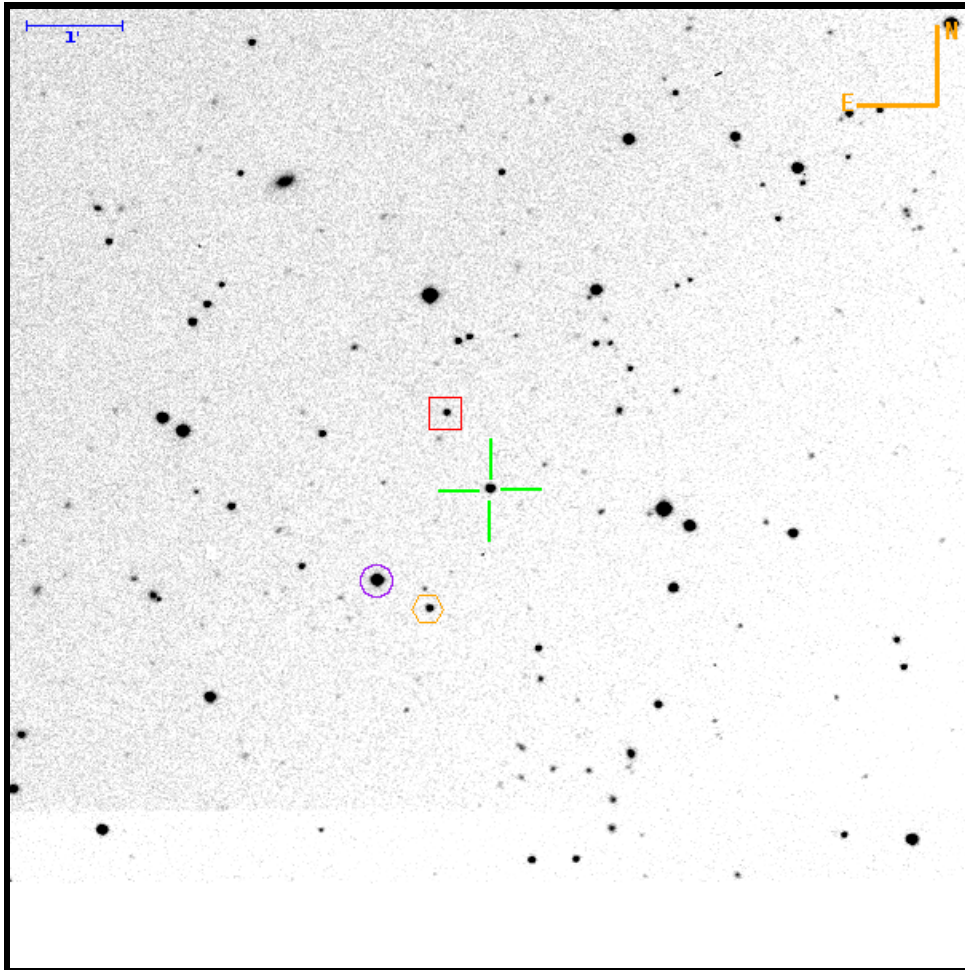
Theoretical 5σ limiting magnitude: 22.98. Filter: R. PTF field: 02 / 003736 / 10.

		To			
		Target	box	hex	circle
From	Target	0	15.16" W 16.10" S	36.00" E 2.32" N	78.12" E 10.47" S
	box	15.16" E 16.10" N	0	51.15" E 18.41" N	93.28" E 5.63" N
	hex	36.00" W 2.32" S	51.15" W 18.41" S	0	42.12" E 12.78" S
	circle	78.12" W 10.47" N	93.28" W 5.63" S	42.12" W 12.78" N	0



Finding Chart for PTFS1504k

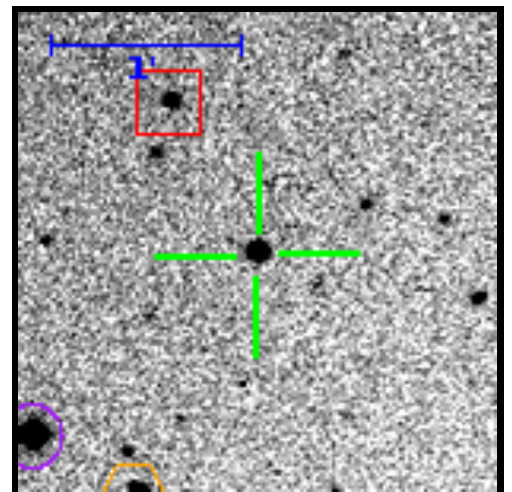
RA=04:07:14.79 DEC=-06:44:25.2



Target (green cross)		
RA	04:07:14.79 61.81161400	(J2000)
DEC	-06:44:25.2 -6.74034200	
Med Mag	16.46 ± 0.83	R-band
Ref Mag	16.66 ± 0.05	R-band
Offset Star S1 (red box)		
RA	04:07:16.65 61.81936997	(J2000)
DEC	-06:43:37.1 -6.72697533	
Med Mag	18.05 ± 0.09	R-band
Ref Mag	18.12 ± 0.03	R-band
Distance	55.5"	
Offset Star S2 (orange hex)		
RA	04:07:17.36 61.82234543	(J2000)
DEC	-06:45:41.1 -6.76140495	
Med Mag	17.63 ± 0.09	R-band
Ref Mag	17.70 ± 0.03	R-band
Distance	85.0"	
Offset Star S3 (purple circle)		
RA	04:07:19.59 61.83161525	(J2000)
DEC	-06:45:23.2 -6.75645802	
Med Mag	14.95 ± 0.06	R-band
Ref Mag	15.03 ± 0.02	R-band
Distance	92.1"	

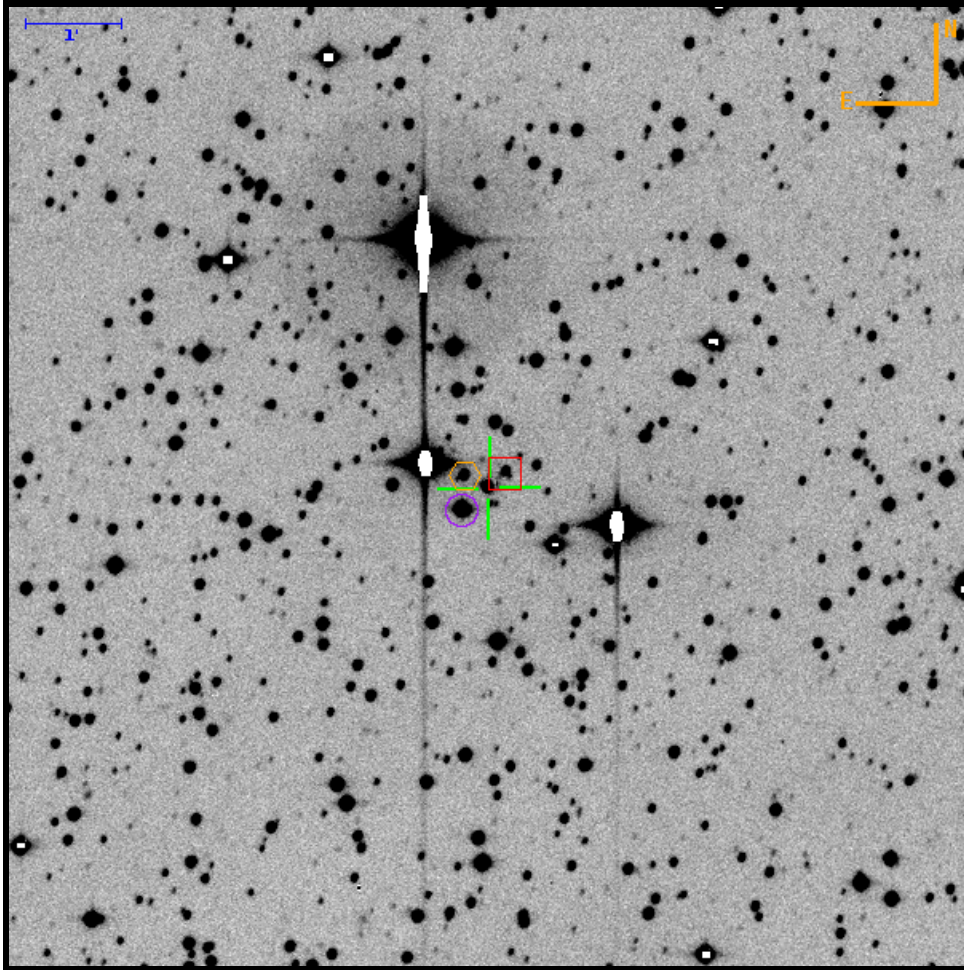
Theoretical 5σ limiting magnitude: 21.66. Filter: R. PTF field: 02 / 002400 / 06.

		To			
		Target	box	hex	circle
From	Target	0	27.73" E 48.12" N	38.37" E 75.83" S	71.51" E 58.02" S
	box	27.73" W 48.12" S	0	10.64" E 123.95" S	43.78" E 106.14" S
	hex	38.36" W 75.83" N	10.64" W 123.95" N	0	33.14" E 17.81" N
	circle	71.50" W 58.02" N	43.78" W 106.14" N	33.14" W 17.81" S	0



Finding Chart for PTFS1604m

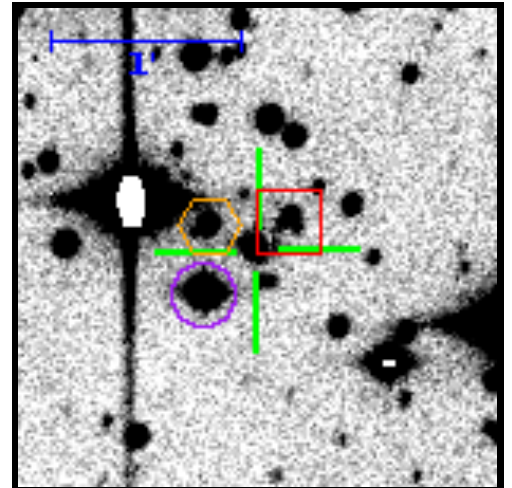
RA=04:26:09.34 DEC=+35:41:44.6



Target (green cross)		
RA	04:26:09.34 66.53891800	(J2000)
DEC	+35:41:44.6 35.69571300	
Med Mag	16.10 ± 0.29	R-band
Offset Star S1 (red box)		
RA	04:26:08.45 66.53522905	(J2000)
DEC	+35:41:53.2 35.69810635	
Med Mag	17.70 ± 0.03	R-band
Ref Mag	18.86 ± 0.15	R-band
Distance	13.8"	
Offset Star S2 (orange hex)		
RA	04:26:10.55 66.54397649	(J2000)
DEC	+35:41:52.1 35.69781748	
Med Mag	16.85 ± 0.02	R-band
Distance	16.6"	
Offset Star S3 (purple circle)		
RA	04:26:10.75 66.54479700	(J2000)
DEC	+35:41:29.9 35.69164631	
Med Mag	14.20 ± 0.00	R-band
Ref Mag	16.49 ± 0.21	R-band
Distance	22.6"	

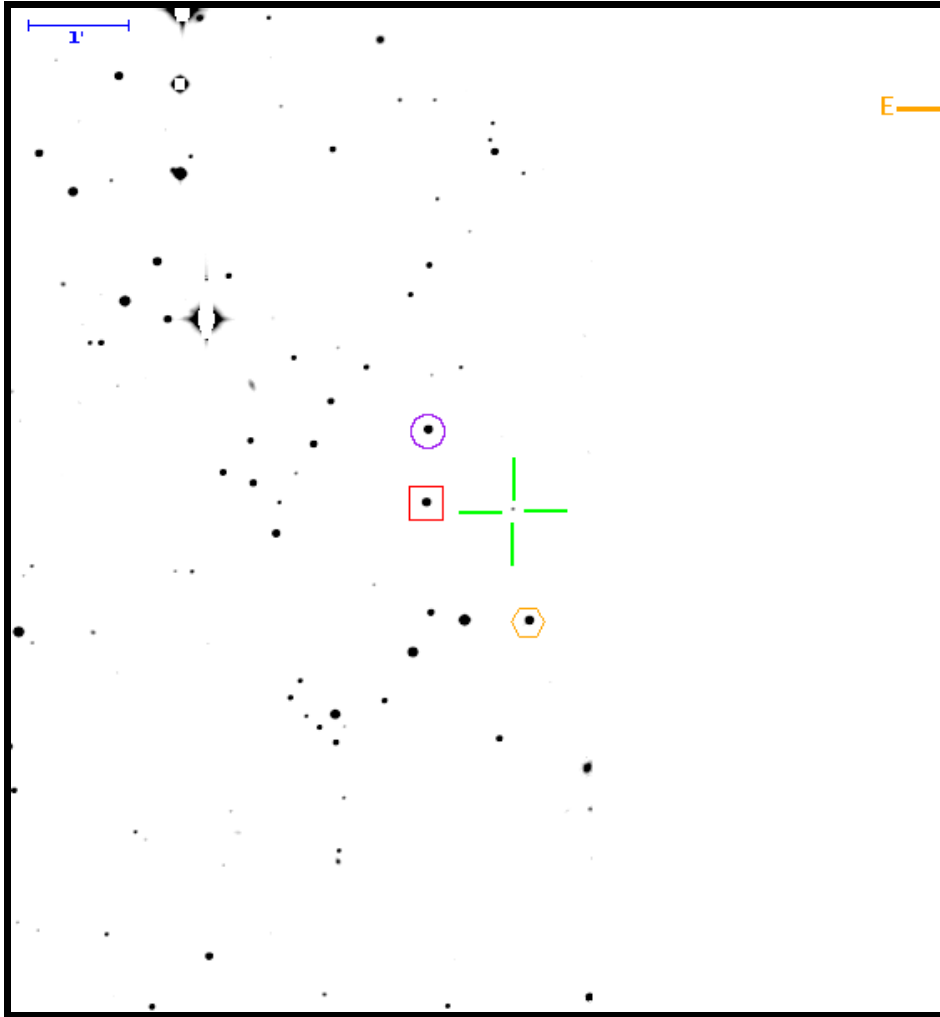
Theoretical 5σ limiting magnitude: 22.62. Filter: R. PTF field: 02 / 004206 / 00.

		To			
		Target	box	hex	circle
From	Target	0	10.79" W 8.62" N	14.79" E 7.58" N	17.19" E 14.64" S
	box	10.78" E 8.62" S	0	25.57" E 1.04" S	27.97" E 23.26" S
	hex	14.79" W 7.58" S	25.57" W 1.04" N	0	2.40" E 22.22" S
	circle	17.19" W 14.64" N	27.97" W 23.26" N	2.40" W 22.22" N	0



Finding Chart for PTFS1204h

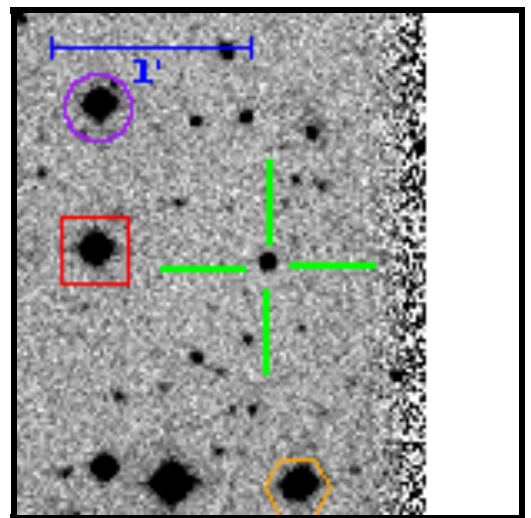
RA=04:38:29.09 DEC=+00:40:15.8



Target (green cross)		
RA	04:38:29.09 69.62122400	(J2000)
DEC	+00:40:15.8 0.67104500	
Med Mag	19.44 ± 0.42	R-band
Ref Mag	19.28 ± 0.03	R-band
Offset Star S1 (red box)		
RA	04:38:32.58 69.63575552	(J2000)
DEC	+00:40:19.9 0.67220751	
Med Mag	15.91 ± 0.04	R-band
Ref Mag	15.92 ± 0.01	R-band
Distance	52.5"	
Offset Star S2 (orange hex)		
RA	04:38:28.45 69.61854114	(J2000)
DEC	+00:39:08.4 0.65233326	
Med Mag	15.85 ± 0.03	R-band
Ref Mag	15.85 ± 0.01	R-band
Distance	68.1"	
Offset Star S3 (purple circle)		
RA	04:38:32.50 69.63541768	(J2000)
DEC	+00:41:03.9 0.68442067	
Med Mag	15.97 ± 0.05	R-band
Ref Mag	15.98 ± 0.01	R-band
Distance	70.2"	

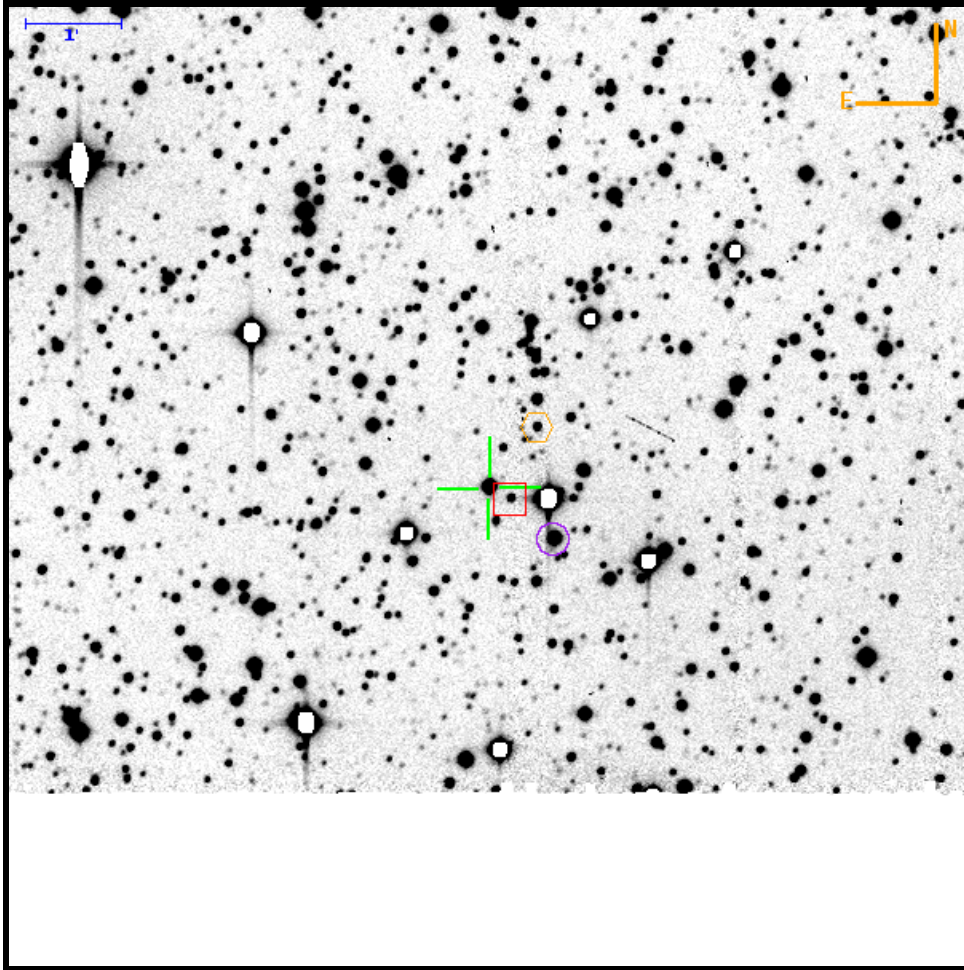
Theoretical 5 σ limiting magnitude: 23.49. Filter: R. PTF field: 02 / 100068 / 10.

		To			
		Target	box	hex	circle
From	Target	0	52.31" E 4.19" N	9.66" W 67.36" S	51.09" E 48.15" N
	box	52.31" W 4.19" S	0	61.97" W 71.55" S	1.22" W 43.97" N
	hex	9.66" E 67.36" N	61.97" E 71.55" N	0	60.75" E 115.51" N
	circle	51.09" W 48.15" S	1.22" E 43.97" S	60.75" W 115.51" S	0



Finding Chart for PTFS1606dc

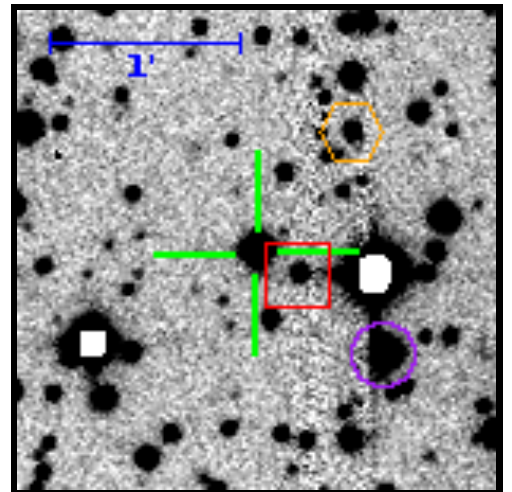
RA=06:36:54.61 DEC=+00:02:17.3



Target (green cross)		
RA	06:36:54.61 99.22752400	(J2000)
DEC	+00:02:17.3 0.03813600	
Med Mag	15.61 ± 0.83	R-band
Ref Mag	15.15 ± 0.12	R-band
Offset Star S1 (red box)		
RA	06:36:53.68 99.22365629	(J2000)
DEC	+00:02:10.0 0.03609812	
Med Mag	17.79 ± 0.03	R-band
Ref Mag	17.80 ± 0.03	R-band
Distance	15.7"	
Offset Star S2 (orange hex)		
RA	06:36:52.56 99.21899826	(J2000)
DEC	+00:02:54.9 0.04859397	
Med Mag	17.63 ± 0.31	R-band
Ref Mag	17.55 ± 0.02	R-band
Distance	48.6"	
Offset Star S3 (purple circle)		
RA	06:36:51.86 99.21607037	(J2000)
DEC	+00:01:44.4 0.02899940	
Med Mag	14.53 ± 0.03	R-band
Ref Mag	14.52 ± 0.02	R-band
Distance	52.7"	

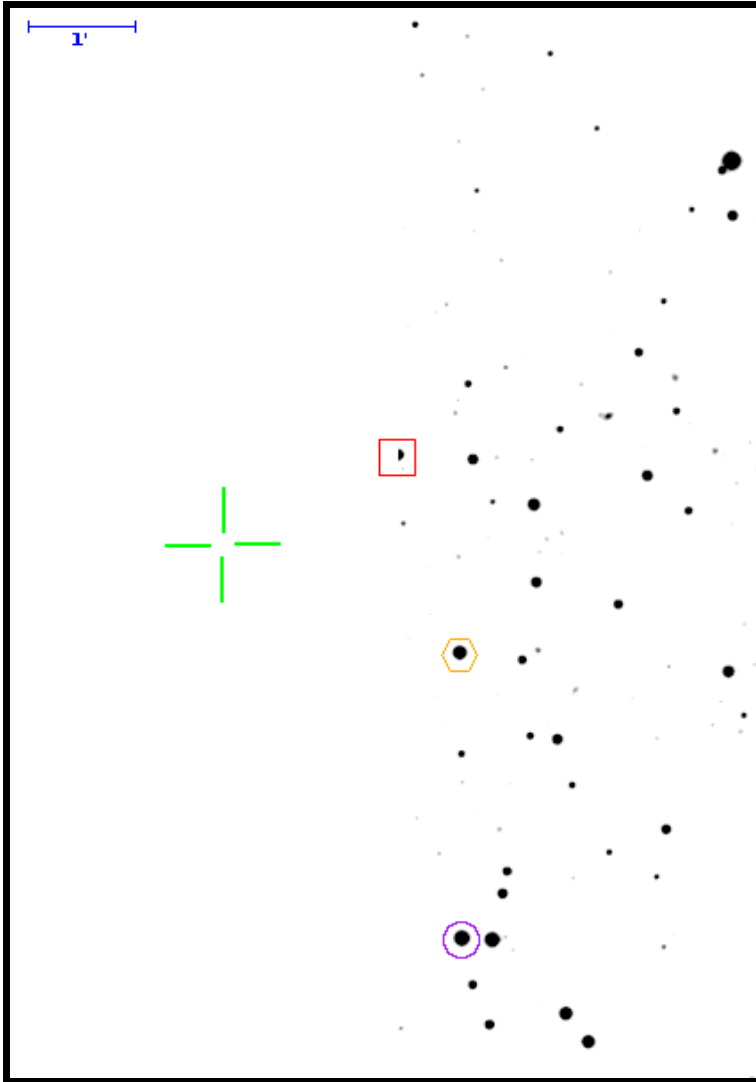
Theoretical 5σ limiting magnitude: 22.15. Filter: R. PTF field: 02 / 022620 / 05.

		To			
		Target	box	hex	circle
From	Target	0	13.92" W 7.34" S	30.69" W 37.65" N	41.23" W 32.89" S
	box	13.92" E 7.34" N	0	16.77" W 44.99" N	27.31" W 25.56" S
	hex	30.69" E 37.65" S	16.77" E 44.99" S	0	10.54" W 70.54" S
	circle	41.23" E 32.89" N	27.31" E 25.56" N	10.54" E 70.54" N	0



Finding Chart for PTFS1507o (= U Gem)

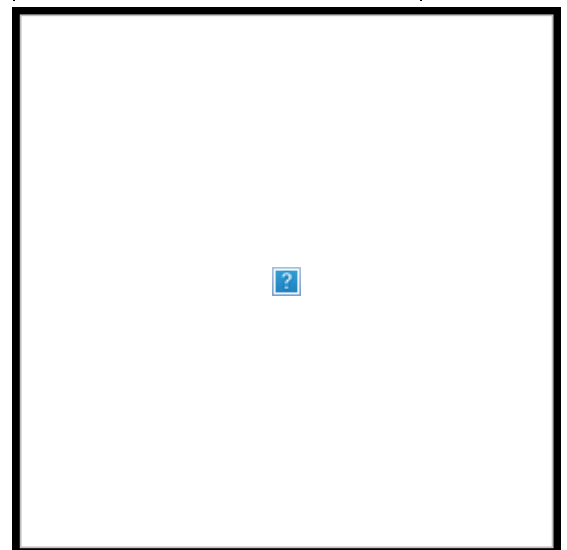
RA=07:55:05.20 DEC=+22:00:04.5

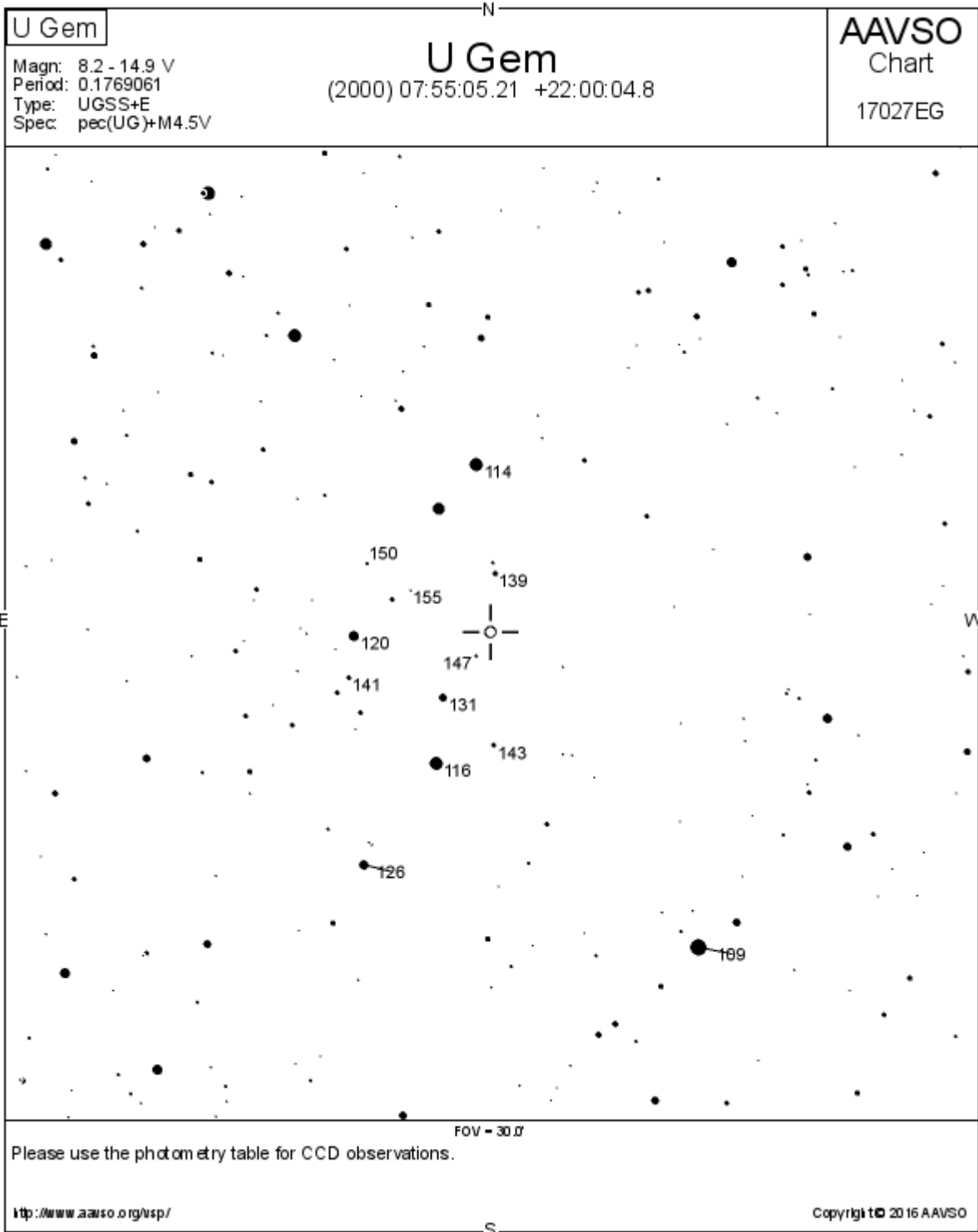


Target (green cross)		
RA	07:55:05.20 118.77168200	(J2000)
DEC	+22:00:04.5 22.00125100	
Offset Star S1 (red box)		
RA	07:54:58.02 118.74174294	(J2000)
DEC	+22:00:52.7 22.01464282	
Med Mag	16.77 ± 0.13	R-band
Ref Mag	17.22 ± 0.03	R-band
Distance	110.9"	
Offset Star S2 (orange hex)		
RA	07:54:55.60 118.73167407	(J2000)
DEC	+21:59:00.3 21.98341230	
Med Mag	15.39 ± 0.03	R-band
Ref Mag	15.39 ± 0.01	R-band
Distance	148.2"	
Offset Star S3 (purple circle)		
RA	07:54:55.61 118.73169156	(J2000)
DEC	+21:56:18.3 21.93840677	
Med Mag	14.83 ± 0.05	R-band
Ref Mag	14.83 ± 0.00	R-band
Distance	262.7"	

Theoretical 5 σ limiting magnitude: 22.99. Filter: R. PTF field: 02 / 003659 / 01.

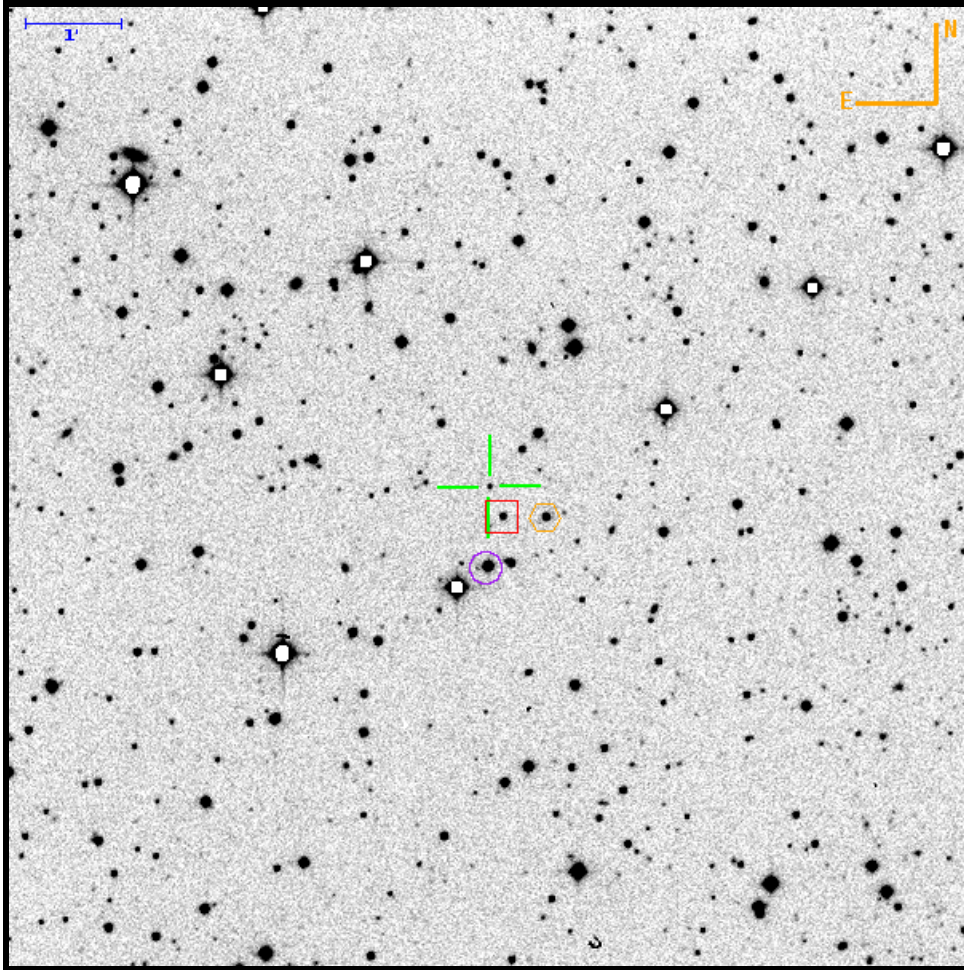
		To			
		Target	box	hex	circle
From	Target	0	99.93" W 48.21" N	133.54" W 64.22" S	133.48" W 226.24" S
	box	99.92" E 48.21" S	0	33.61" W 112.43" S	33.55" W 274.45" S
	hex	133.56" E 64.22" N	33.61" E 112.43" N	0	0.06" E 162.02" S
	circle	133.54" E 226.24" N	33.56" E 274.45" N	0.06" W 162.02" N	0





Finding Chart for PTFS1508bh

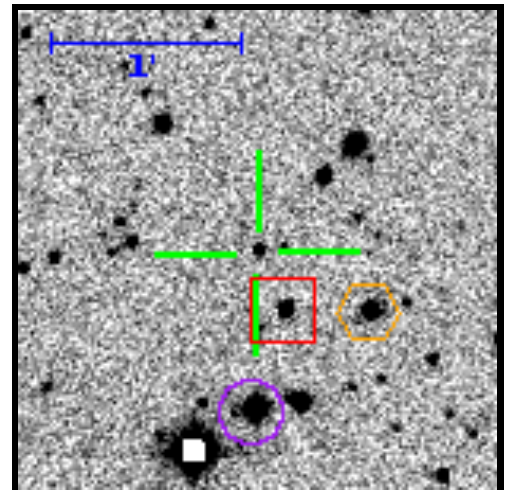
RA=08:26:54.69 DEC=-00:07:33.2



Target (green cross)		
RA	08:26:54.69 126.72788700	(J2000)
DEC	-00:07:33.2 -0.12588100	
Med Mag	19.80 ± 0.34	R-band
Ref Mag	19.87 ± 0.07	R-band
Offset Star S1 (red box)		
RA	08:26:54.13 126.72553690	(J2000)
DEC	-00:07:52.3 -0.13118577	
Med Mag	18.23 ± 0.06	R-band
Ref Mag	18.24 ± 0.04	R-band
Distance	20.9"	
Offset Star S2 (orange hex)		
RA	08:26:52.31 126.71796189	(J2000)
DEC	-00:07:52.8 -0.13132392	
Med Mag	17.46 ± 0.07	R-band
Ref Mag	17.50 ± 0.04	R-band
Distance	40.8"	
Offset Star S3 (purple circle)		
RA	08:26:54.77 126.72822751	(J2000)
DEC	-00:08:23.8 -0.13994973	
Med Mag	15.76 ± 0.05	R-band
Ref Mag	15.80 ± 0.04	R-band
Distance	50.7"	

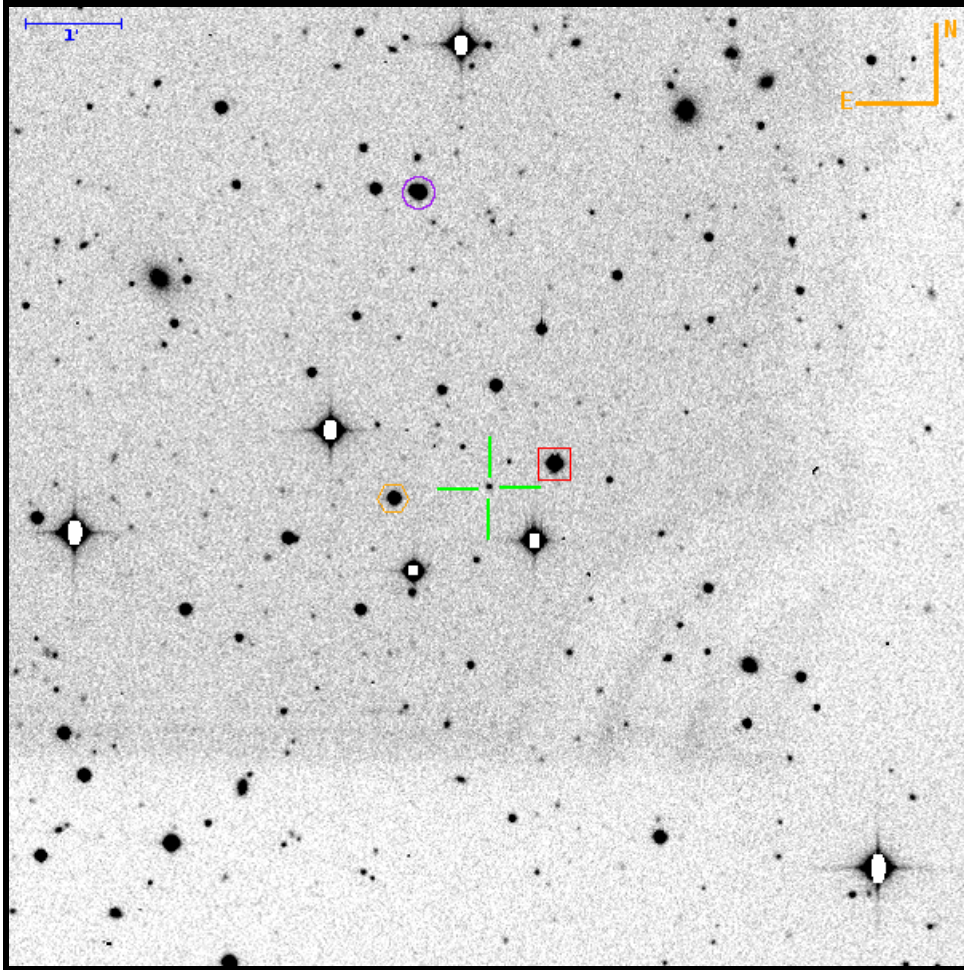
Theoretical 5 σ limiting magnitude: 22.23. Filter: R. PTF field: 02 / 002628 / 05.

		To			
		Target	box	hex	circle
From	Target	0	8.46" W 19.10" S	35.73" W 19.59" S	1.23" E 50.65" S
	box	8.46" E 19.10" N	0	27.27" W 0.50" S	9.69" E 31.55" S
	hex	35.73" E 19.59" N	27.27" E 0.50" N	0	36.96" E 31.05" S
	circle	1.23" W 50.65" N	9.69" W 31.55" N	36.96" W 31.05" N	0



Finding Chart for PTFS1509n

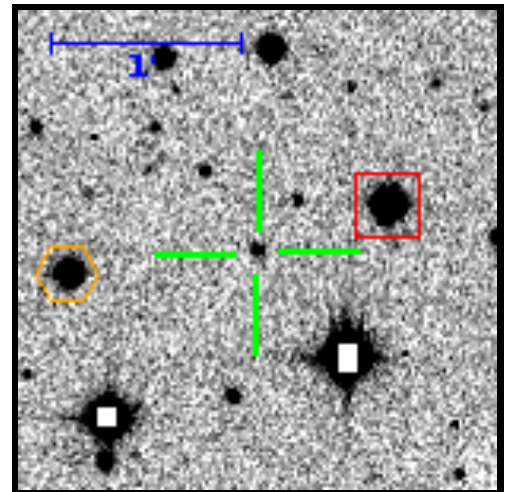
RA=09:01:03.95 DEC=+48:09:10.9



Target (green cross)		
RA	09:01:03.95 135.26645700	(J2000)
DEC	+48:09:10.9 48.15301500	
Med Mag	19.93 ± 1.40	R-band
Ref Mag	19.87 ± 0.05	R-band
Offset Star S1 (red box)		
RA	09:00:59.77 135.24905845	(J2000)
DEC	+48:09:24.6 48.15684267	
Med Mag	14.55 ± 0.02	R-band
Ref Mag	14.56 ± 0.02	R-band
Distance	44.0"	
Offset Star S2 (orange hex)		
RA	09:01:09.97 135.29153809	(J2000)
DEC	+48:09:04.4 48.15122104	
Med Mag	15.63 ± 0.02	R-band
Ref Mag	15.63 ± 0.02	R-band
Distance	60.6"	
Offset Star S3 (purple circle)		
RA	09:01:08.11 135.28379104	(J2000)
DEC	+48:12:17.6 48.20490221	
Med Mag	15.05 ± 0.02	R-band
Ref Mag	15.06 ± 0.01	R-band
Distance	191.4"	

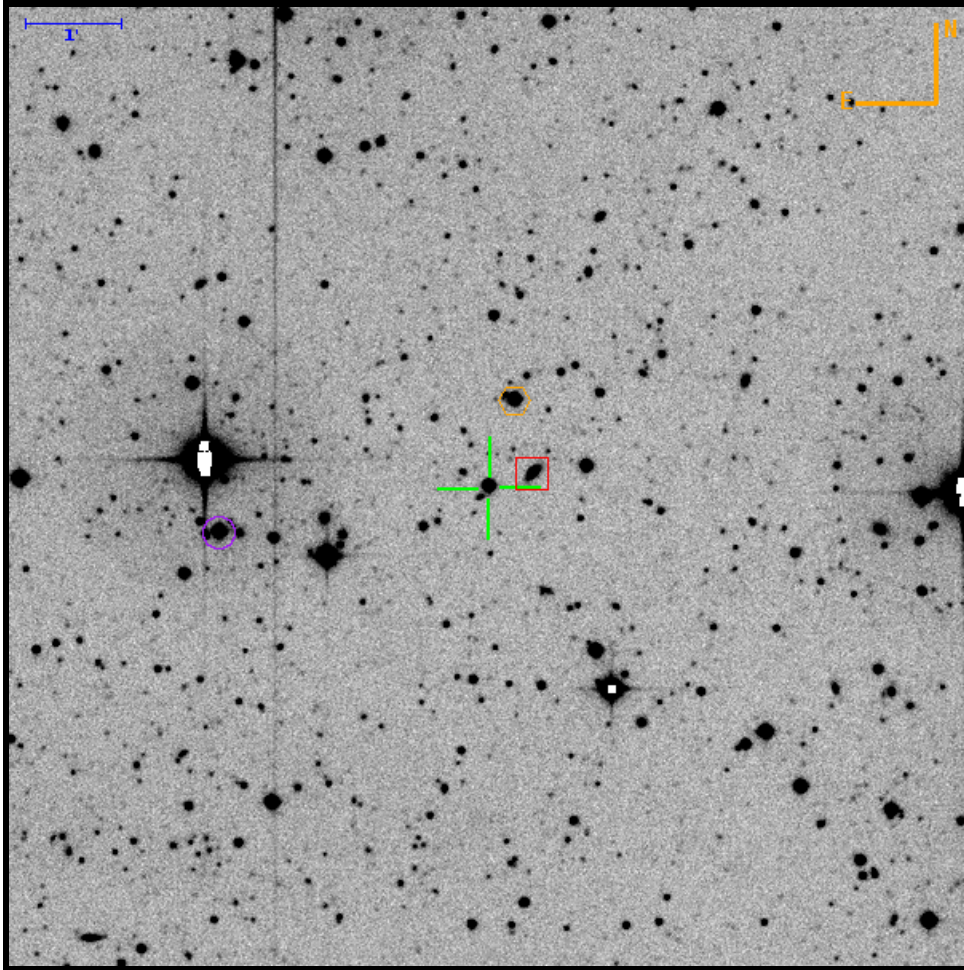
Theoretical 5 σ limiting magnitude: 22.52. Filter: R. PTF field: 02 / 004697 / 07.

		To			
		Target	box	hex	circle
From	Target	0	41.79" W 13.78" N	60.24" E 6.46" S	41.63" E 186.79" N
	box	41.78" E 13.78" S	0	102.02" E 20.24" S	83.41" E 173.01" N
	hex	60.24" W 6.46" N	102.03" W 20.24" N	0	18.61" W 193.25" N
	circle	41.59" W 186.79" S	83.33" W 173.01" S	18.59" E 193.25" S	0



Finding Chart for PTFS1109e

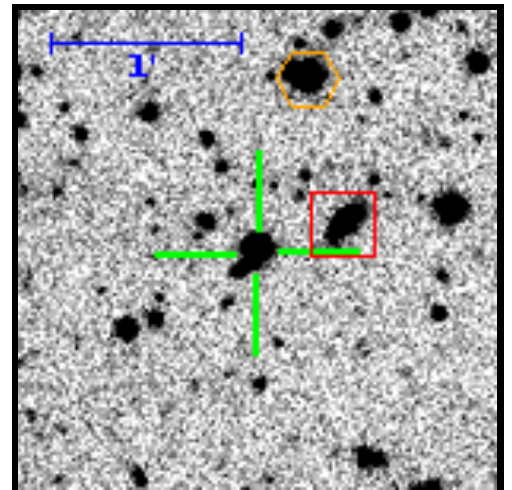
RA=09:09:50.53 DEC=+18:49:47.3



Target (green cross)		
RA	09:09:50.53 137.46055900	(J2000)
DEC	+18:49:47.3 18.82981900	
Med Mag	16.20 ± 0.29	R-band
Ref Mag	16.31 ± 0.01	R-band
Offset Star S1 (red box)		
RA	09:09:48.57 137.45235996	(J2000)
DEC	+18:49:55.6 18.83210100	
Med Mag	18.17 ± 0.08	R-band
Ref Mag	18.08 ± 0.00	R-band
Distance	29.1"	
Offset Star S2 (orange hex)		
RA	09:09:49.37 137.45568813	(J2000)
DEC	+18:50:42.0 18.84500215	
Med Mag	16.17 ± 0.05	R-band
Ref Mag	16.16 ± 0.01	R-band
Distance	57.1"	
Offset Star S3 (purple circle)		
RA	09:10:02.56 137.51067302	(J2000)
DEC	+18:49:19.5 18.82208953	
Med Mag	15.71 ± 0.03	R-band
Ref Mag	15.67 ± 0.00	R-band
Distance	173.0"	

Theoretical 5 σ limiting magnitude: 23.50. Filter: R. PTF field: 02 / 100085 / 02.

		To			
		Target	box	hex	circle
From	Target	0	27.94" W 8.22" N	16.60" W 54.66" N	170.76" E 27.83" S
	box	27.94" E 8.22" S	0	11.34" E 46.44" N	198.69" E 36.04" S
	hex	16.60" E 54.66" S	11.34" W 46.44" S	0	187.33" E 82.49" S
	circle	170.76" W 27.83" N	198.70" W 36.04" N	187.36" W 82.49" N	0



AR Cnc

Magn: 15.3 - 18.7 V
Period: 0.2146
Type: UG+EA
Spec:

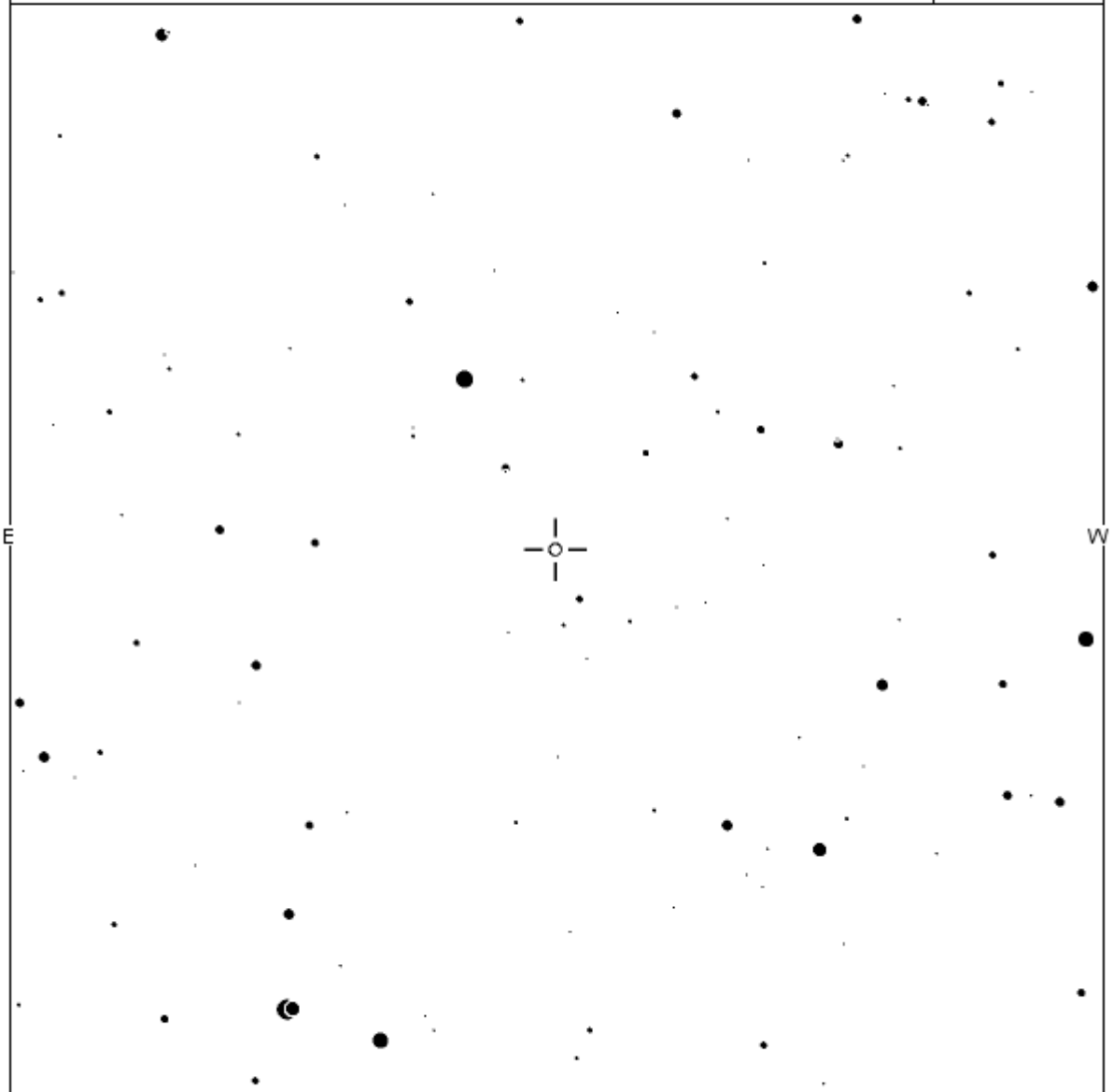
AR Cnc

(2000) 09:22:07.57 +31:03:14.4

AAVSO

Chart

17027EE



FOV = 30.0'

Please use the photometry table for CCD observations.

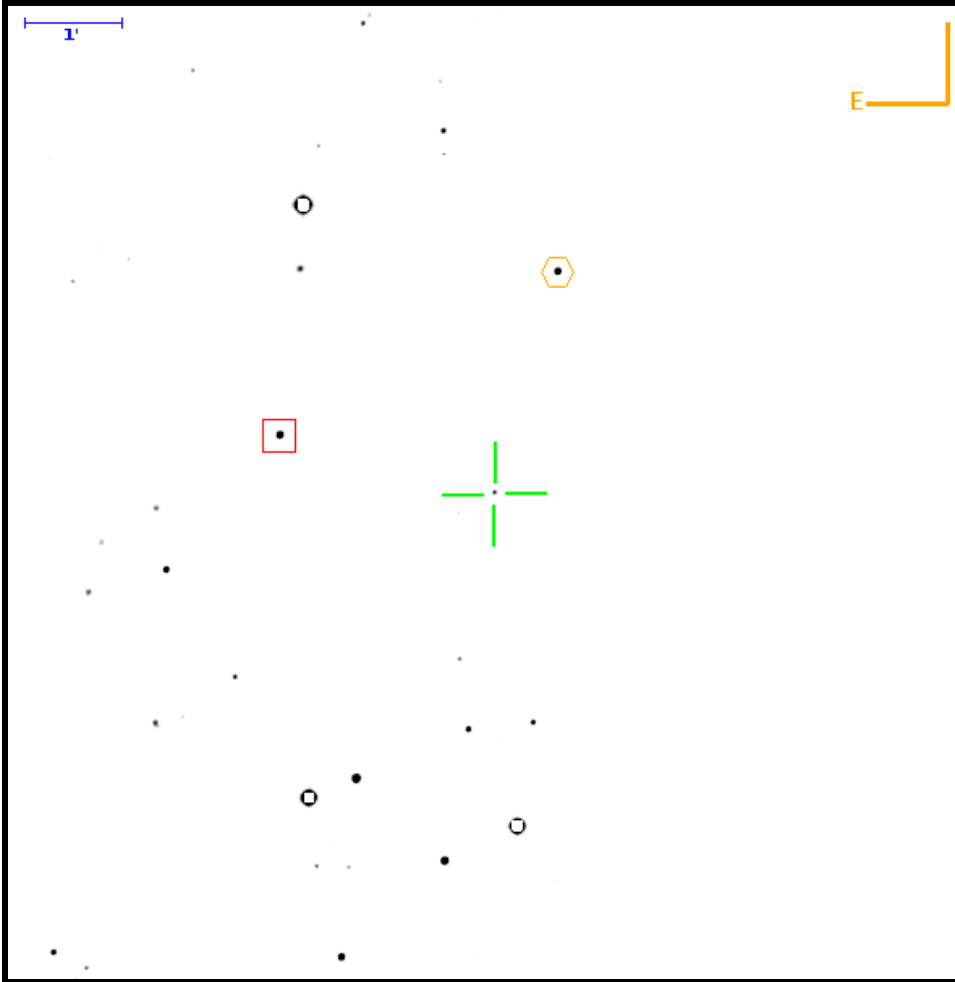
<http://www.aavso.org/isp/>

Copyright © 2016 AAVSO

S

Finding Chart for PTFS1609t

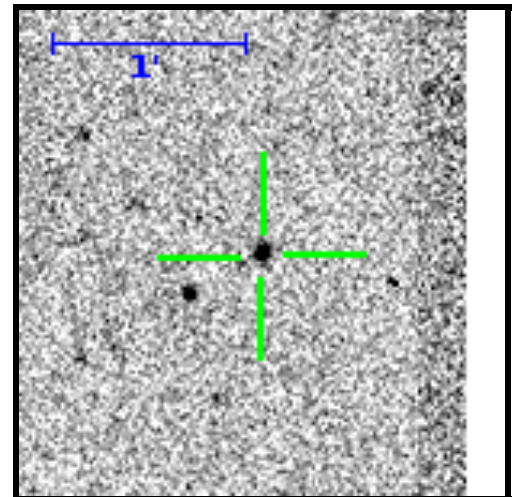
RA=09:32:49.59 DEC=+47:25:23.1



Target (green cross)		
RA	09:32:49.59 143.20661300	(J2000)
DEC	+47:25:23.1 47.42308300	
Med Mag	19.31 ± 0.62	R-band
Ref Mag	18.86 ± 0.06	R-band
Offset Star S1 (red box)		
RA	09:33:02.85 143.26186022	(J2000)
DEC	+47:25:56.3 47.43230872	
Med Mag	16.98 ± 0.03	R-band
Ref Mag	16.96 ± 0.01	R-band
Distance	138.6"	
Offset Star S2 (orange hex)		
RA	09:32:45.96 143.19151283	(J2000)
DEC	+47:27:41.7 47.46159025	
Med Mag	17.14 ± 0.02	R-band
Ref Mag	17.14 ± 0.01	R-band
Distance	143.4"	
Offset Star S3 (purple circle)		
RA	09:32:52.48 143.21864869	(J2000)
DEC	+47:19:40.8 47.32799155	
Med Mag	15.98 ± 0.01	R-band
Ref Mag	15.97 ± 0.01	R-band
Distance	343.6"	

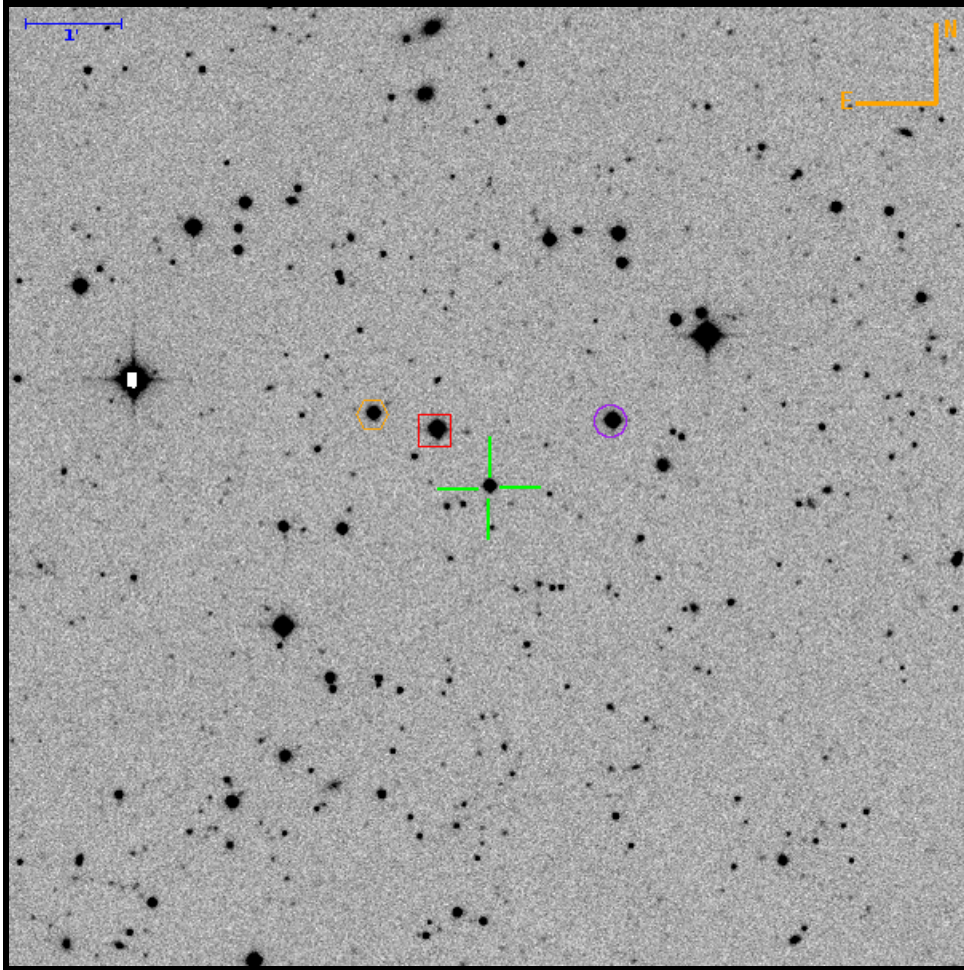
Theoretical 5σ limiting magnitude: 21.72. Filter: R. PTF field: 02 / 004698 / 11.

		To			
		Target	box	hex	circle
From	Target	0	134.56" E 33.21" N	36.78" W 138.63" N	29.32" E 342.33" S
	box	134.54" W 33.21" S	0	171.31" W 105.41" N	105.23" W 375.54" S
	hex	36.75" E 138.63" S	171.22" E 105.41" S	0	66.05" E 480.96" S
	circle	29.37" W 342.33" N	105.44" E 375.54" N	66.21" W 480.96" N	0



Finding Chart for PTFS1509ao

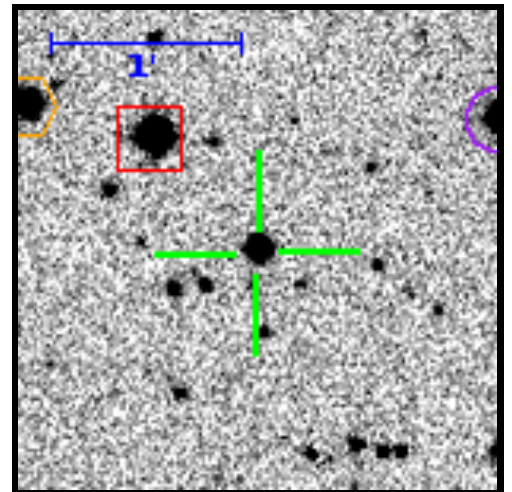
RA=09:40:02.55 DEC=+27:49:42.1



Target (green cross)		
RA	09:40:02.55 145.01064400	(J2000)
DEC	+27:49:42.1 27.82835100	
Med Mag	17.80 ± 1.29	R-band
Offset Star S1 (red box)		
RA	09:40:05.07 145.02112527	(J2000)
DEC	+27:50:18.2 27.83839712	
Med Mag	14.46 ± 0.01	R-band
Ref Mag	14.49 ± 0.01	R-band
Distance	49.2"	
Offset Star S2 (orange hex)		
RA	09:40:08.08 145.03368613	(J2000)
DEC	+27:50:28.3 27.84120426	
Med Mag	15.69 ± 0.01	R-band
Ref Mag	15.71 ± 0.02	R-band
Distance	86.7"	
Offset Star S3 (purple circle)		
RA	09:39:56.70 144.98623166	(J2000)
DEC	+27:50:23.4 27.83982186	
Med Mag	14.81 ± 0.01	R-band
Ref Mag	14.85 ± 0.02	R-band
Distance	88.0"	

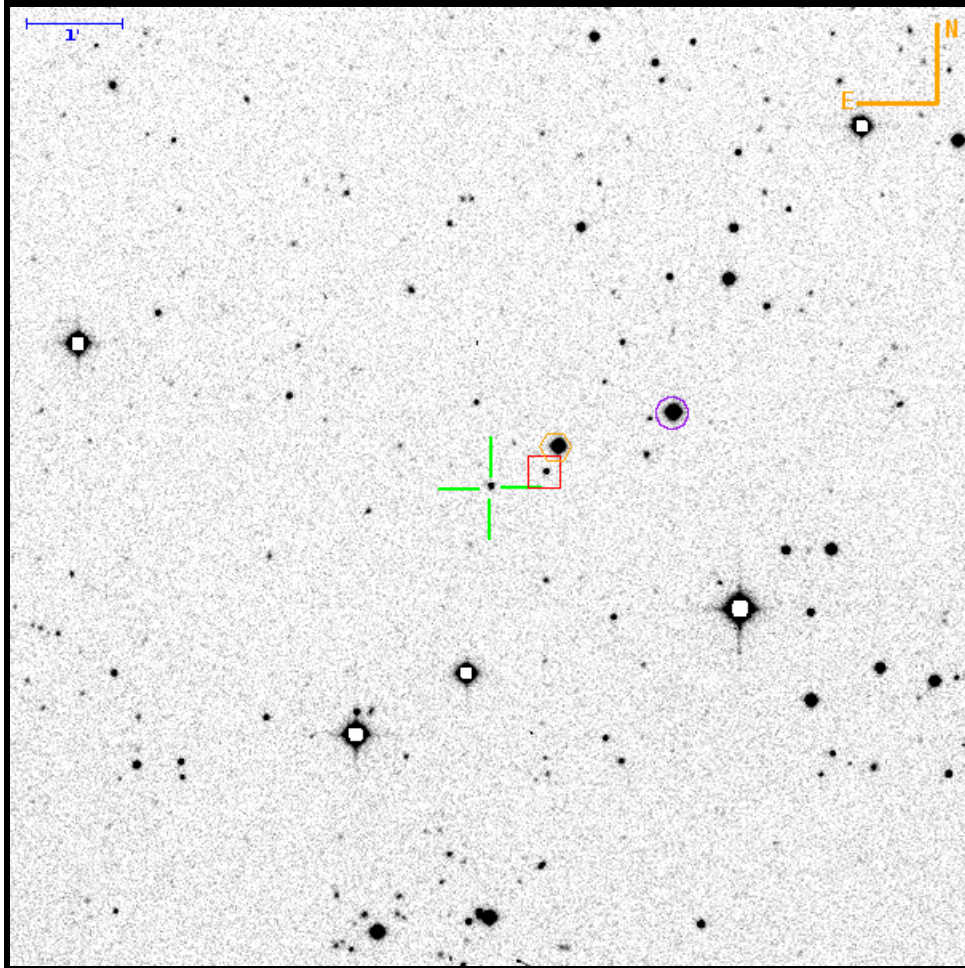
Theoretical 5 σ limiting magnitude: 22.50. Filter: R. PTF field: 02 / 003954 / 08.

		To			
		Target	box	hex	circle
From	Target	0	33.37" E 36.17" N	73.36" E 46.27" N	77.72" W 41.30" N
	box	33.37" W 36.17" S	0	39.99" E 10.11" N	111.08" W 5.13" N
	hex	73.35" W 46.27" S	39.98" W 10.11" S	0	151.06" W 4.98" S
	circle	77.71" E 41.30" S	111.08" E 5.13" S	151.06" E 4.98" N	0



Finding Chart for PTFS1509as

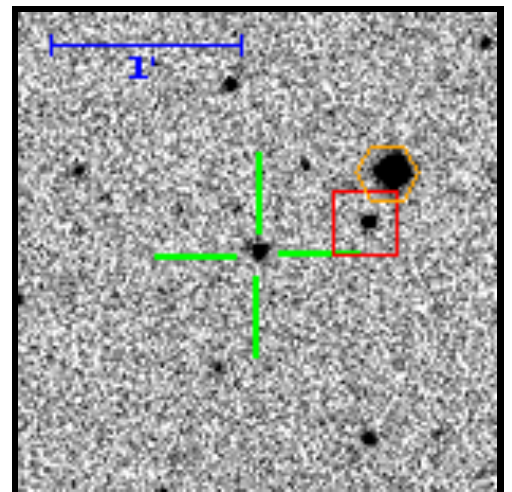
RA=09:46:36.58 DEC=+44:46:44.8



Target (green cross)		
RA	09:46:36.58 146.65240100	(J2000)
DEC	+44:46:44.8 44.77911000	
Med Mag	18.89 ± 0.58	R-band
Ref Mag	18.44 ± 0.06	R-band
Offset Star S1 (red box)		
RA	09:46:33.33 146.63888419	(J2000)
DEC	+44:46:55.1 44.78196454	
Med Mag	18.89 ± 0.07	R-band
Ref Mag	18.92 ± 0.04	R-band
Distance	36.0"	
Offset Star S2 (orange hex)		
RA	09:46:32.65 146.63605838	(J2000)
DEC	+44:47:11.2 44.78644708	
Med Mag	14.59 ± 0.02	R-band
Ref Mag	14.61 ± 0.03	R-band
Distance	49.4"	
Offset Star S3 (purple circle)		
RA	09:46:25.87 146.60777523	(J2000)
DEC	+44:47:34.5 44.79290765	
Med Mag	14.15 ± 0.02	R-band
Ref Mag	14.21 ± 0.03	R-band
Distance	124.4"	

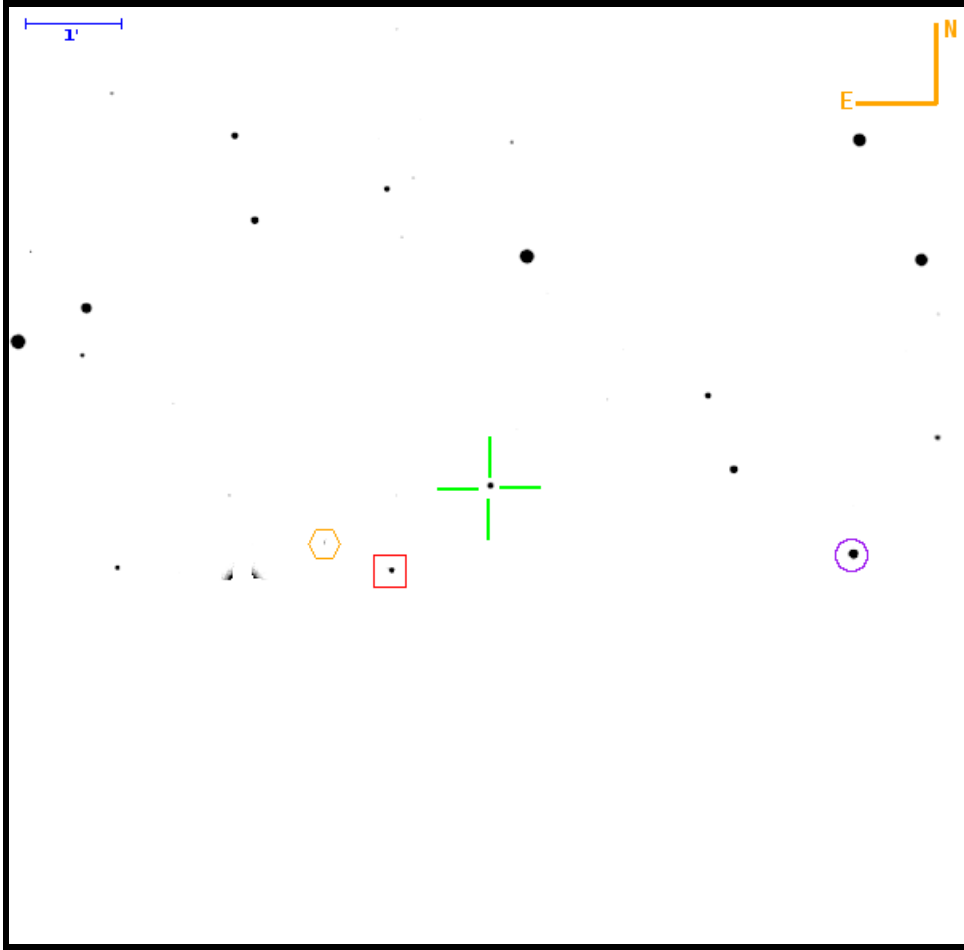
Theoretical 5 σ limiting magnitude: 21.22. Filter: R. PTF field: 02 / 004552 / 05.

		To			
		Target	box	hex	circle
From	Target	0	34.54" W 10.28" N	41.76" W 26.41" N	114.04" W 49.67" N
	box	34.54" E 10.28" S	0	7.22" W 16.14" N	79.49" W 39.40" N
	hex	41.76" E 26.41" S	7.22" E 16.14" S	0	72.26" W 23.26" N
	circle	114.01" E 49.67" S	79.48" E 39.40" S	72.26" E 23.26" S	0



Finding Chart for PTFS1510aw

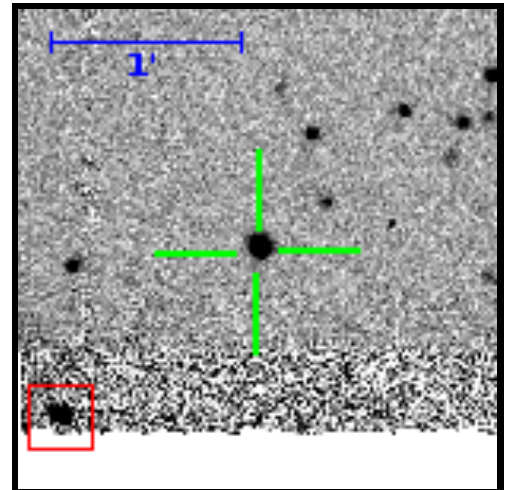
RA=10:06:58.43 DEC=+23:37:24.1



Target (green cross)		
RA	10:06:58.43 151.74343800	(J2000)
DEC	+23:37:24.1 23.62335800	
Med Mag	18.22 ± 0.76	R-band
Offset Star S1 (red box)		
RA	10:07:02.93 151.76218871	(J2000)
DEC	+23:36:30.3 23.60842349	
Med Mag	17.30 ± 0.04	R-band
Distance	82.0"	
Offset Star S2 (orange hex)		
RA	10:07:05.92 151.77466434	(J2000)
DEC	+23:36:47.5 23.61319613	
Med Mag	17.90 ± 0.04	R-band
Distance	109.3"	
Offset Star S3 (purple circle)		
RA	10:06:41.67 151.67363753	(J2000)
DEC	+23:36:42.8 23.61188128	
Med Mag	14.83 ± 0.04	R-band
Distance	233.9"	

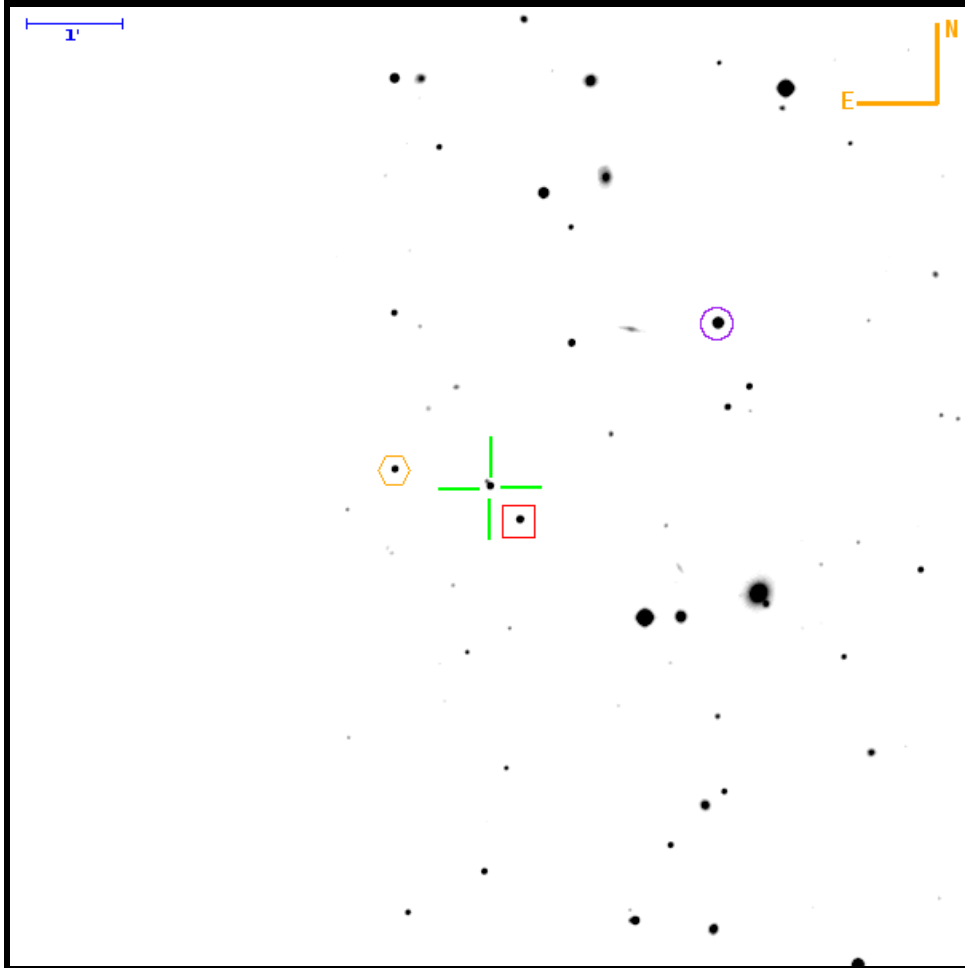
Theoretical 5 σ limiting magnitude: 21.89. Filter: R. PTF field: 02 / 003765 / 05.

		To			
		Target	box	hex	circle
From	Target	0	61.85" E 53.76" S	102.99" E 36.58" S	230.22" W 41.32" S
	box	61.85" W 53.76" N	0	41.15" E 17.18" N	292.10" W 12.45" N
	hex	103.00" W 36.58" N	41.15" W 17.18" S	0	333.24" W 4.73" S
	circle	230.24" E 41.32" N	292.10" E 12.45" S	333.25" E 4.73" N	0



Finding Chart for PTFS1310as

RA=10:43:56.67 DEC=+58:07:31.9



Target (green cross)		
RA	10:43:56.67 160.98612500	(J2000)
DEC	+58:07:31.9 58.12553800	
Med Mag	17.35 ± 0.56	R-band
Ref Mag	17.32 ± 0.02	R-band
Offset Star S1 (red box)		
RA	10:43:54.30 160.97625370	(J2000)
DEC	+58:07:10.6 58.11960887	
Med Mag	17.13 ± 0.03	R-band
Ref Mag	17.14 ± 0.01	R-band
Distance	28.4"	
Offset Star S2 (orange hex)		
RA	10:44:04.27 161.01777511	(J2000)
DEC	+58:07:42.8 58.12856528	
Med Mag	17.63 ± 0.04	R-band
Ref Mag	17.63 ± 0.01	R-band
Distance	61.1"	
Offset Star S3 (purple circle)		
RA	10:43:38.39 160.90995804	(J2000)
DEC	+58:09:14.2 58.15393871	
Med Mag	15.39 ± 0.01	R-band
Ref Mag	15.40 ± 0.01	R-band
Distance	177.2"	

Theoretical 5σ limiting magnitude: 22.47. Filter: R. PTF field: 02 / 004958 / 02.

		To			
		Target	box	hex	circle
From	Target	0	18.77" W 21.34" S	60.17" E 10.90" N	144.79" W 102.24" N
	box	18.77" E 21.34" N	0	78.95" E 32.24" N	126.05" W 123.59" N
	hex	60.16" W 10.90" S	78.93" W 32.24" S	0	204.94" W 91.34" N
	circle	144.68" E 102.24" S	125.93" E 123.59" S	204.80" E 91.34" S	0

